

Write your name here

Surname

Other names

Pearson
Edexcel Award

Centre Number

--	--	--	--	--

Candidate Number

--	--	--	--

Number and Measure

Level 2

Section A (Calculator)

Tuesday 12 January 2016 – Morning

Time: 1 hour

Paper Reference

ANM20/2A

You must have: Ruler graduated in centimetres and millimetres, protractor, pen, HB pencil, eraser, calculator.

Total Marks

Instructions

- Use **black** ink or ball-point pen.
- **Fill in the boxes** at the top of this page with your name, centre number and candidate number.
- Answer **all** questions.
- Answer the questions in the spaces provided – *there may be more space than you need.*
- **Calculators may be used.**
- If your calculator does not have a π button, take the value of π to be 3.142 unless the question instructs otherwise.



Information

- The total mark for this section is 50
- The marks for **each** question are shown in brackets – *use this as a guide as to how much time to spend on each question.*

Advice

- Read each question carefully before you start to answer it.
- Keep an eye on the time.
- Try to answer every question.
- Check your answers if you have time at the end.

Turn over ►

P47102A

©2016 Pearson Education Ltd.

6/6/8/



PEARSON

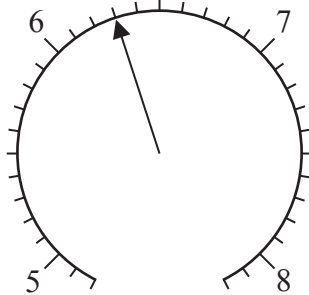
Section A

Answer ALL questions.

Write your answers in the spaces provided.

You must write down all stages in your working.

1 (a)



Write down the number marked with the arrow.

.....
(1)

(b)



Write down the number marked with the arrow.

.....
(1)

(Total for Question 1 is 2 marks)

2 (a) Work out -4×-7

.....
(1)

(b) Work out $-6 + -9$

.....
(1)

(Total for Question 2 is 2 marks)

DO NOT WRITE IN THIS AREA

DO NOT WRITE IN THIS AREA

DO NOT WRITE IN THIS AREA



3 (a) Work out $£240 \div 7$

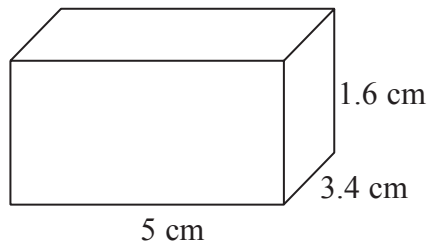
£.....
(2)

(b) Work out 5.4×1.72

.....
(1)

(Total for Question 3 is 3 marks)

4 Work out the volume of this cuboid.



..... cm³

(Total for Question 4 is 2 marks)

5 Work out 7% of 600

.....

(Total for Question 5 is 2 marks)



6 (a) Find the value of 48^3

.....
(1)

(b) Find the value of $\sqrt{225}$

.....
(1)

(c) Work out the value of $2^5 \times 3^2$

.....
(2)

(Total for Question 6 is 4 marks)

7 Change 372 dirhams into pounds (£).
Use an exchange rate of £1 = 6.20 dirhams.

£.....

(Total for Question 7 is 2 marks)

8 Work out $4\frac{4}{5} \div 3\frac{3}{4}$

.....
(Total for Question 8 is 2 marks)



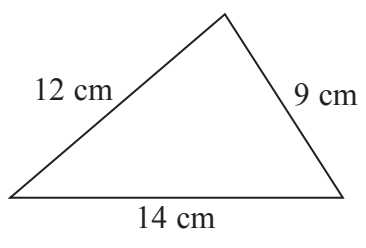
DO NOT WRITE IN THIS AREA

9 Change $5\frac{1}{2}$ gallons into litres.
(1 gallon = 4.5 litres)

..... litres

(Total for Question 9 is 2 marks)

10



Work out the perimeter of this triangle.

..... cm

(Total for Question 10 is 2 marks)

DO NOT WRITE IN THIS AREA

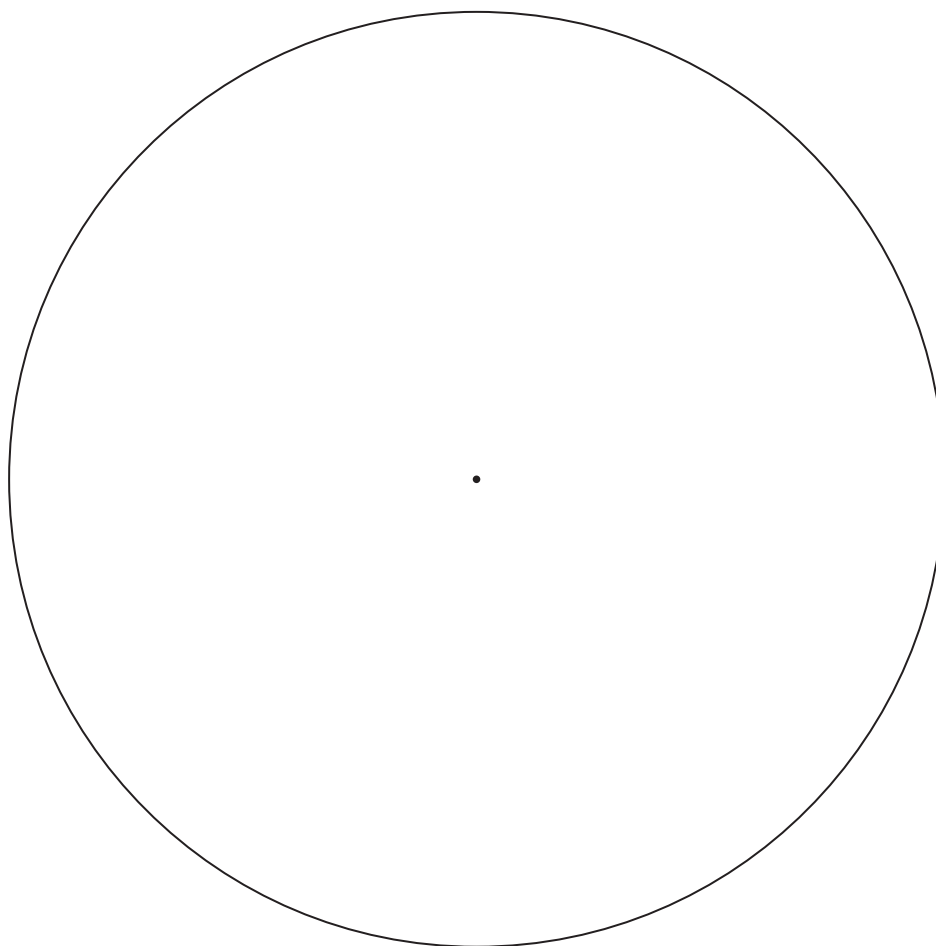
DO NOT WRITE IN THIS AREA



11 The table gives the numbers of men, women and children that are on a train.

Men	120
Women	96
Children	54

Draw a pie chart for this information.



(Total for Question 11 is 4 marks)

DO NOT WRITE IN THIS AREA

DO NOT WRITE IN THIS AREA

DO NOT WRITE IN THIS AREA



DO NOT WRITE IN THIS AREA

DO NOT WRITE IN THIS AREA

DO NOT WRITE IN THIS AREA

12 Natalie is paid an hourly rate of £12.60 per hour for the first 26 hours that she works. When she works overtime, her overtime is paid at double this hourly rate.

Last week Natalie worked for 30 hours.
She paid £82.50 tax and £21.35 National Insurance.

Work out Natalie's pay for last week after these deductions.

£.....

(Total for Question 12 is 4 marks)

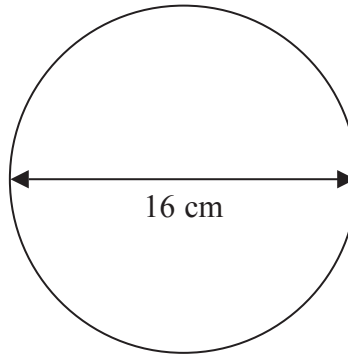
13 Find the Highest Common Factor (HCF) of 24 and 84

.....

(Total for Question 13 is 3 marks)



14



A circle has a diameter of 16 cm.

Work out the circumference of the circle.

..... cm

(Total for Question 14 is 3 marks)

15 Joan invests £3000 for 4 years in an account paying simple interest at a rate of 2% per year.

Work out the total amount of simple interest at the end of the 4 years.

£.....

(Total for Question 15 is 3 marks)

DO NOT WRITE IN THIS AREA

DO NOT WRITE IN THIS AREA

DO NOT WRITE IN THIS AREA

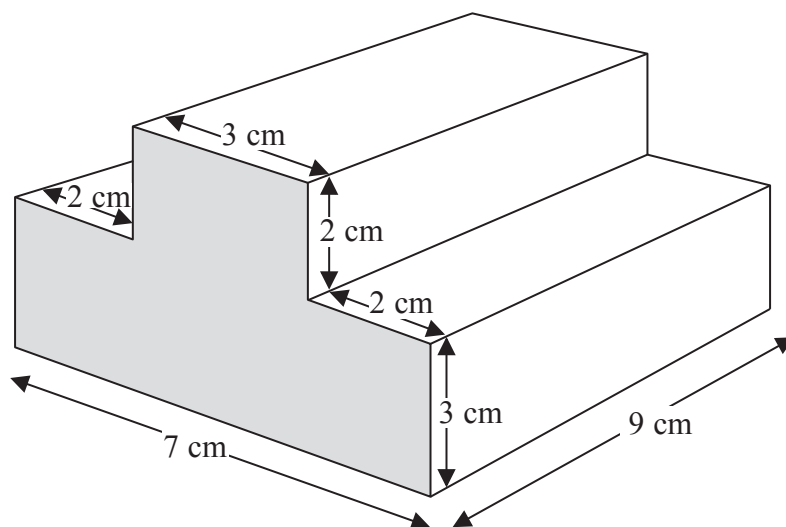


DO NOT WRITE IN THIS AREA

DO NOT WRITE IN THIS AREA

DO NOT WRITE IN THIS AREA

16 Here is a prism.
All the corners are right angles.



(i) Work out the area of the shaded face.

..... cm²

(ii) Work out the volume of the prism.

..... cm³

(Total for Question 16 is 4 marks)

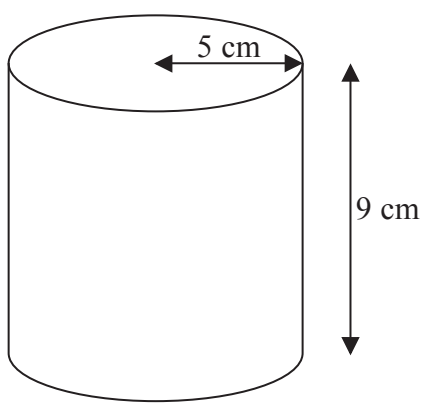


17 The number of students in a school increases from 840 to 966 in a year.
What is the percentage increase in the number of students in the school?

..... %

(Total for Question 17 is 3 marks)

18 Here is a cylinder.



The height of the cylinder is 9 cm.
The radius of the cylinder is 5 cm.

Work out the volume of the cylinder.

..... cm³

(Total for Question 18 is 3 marks)

TOTAL FOR SECTION A IS 50 MARKS



DO NOT WRITE IN THIS AREA

DO NOT WRITE IN THIS AREA

DO NOT WRITE IN THIS AREA

BLANK PAGE



DO NOT WRITE IN THIS AREA

DO NOT WRITE IN THIS AREA

DO NOT WRITE IN THIS AREA

BLANK PAGE



Write your name here

Surname

Other names

Pearson
Edexcel Award

Centre Number

--	--	--	--	--

Candidate Number

--	--	--	--

Number and Measure

Level 2

Section B (Non-Calculator)

Tuesday 12 January 2016 – Morning
Time: 30 minutes

Paper Reference

ANM20/2B

You must have: Ruler graduated in centimetres and millimetres, protractor, pen, HB pencil, eraser.

Total Marks

--

Instructions

- Use **black** ink or ball-point pen.
- **Fill in the boxes** at the top of this page with your name, centre number and candidate number.
- Answer **all** questions.
- Answer the questions in the spaces provided – *there may be more space than you need.*
- **Calculators must not be used.**



Information

- The total mark for this section is 30
- The total mark for this paper is 80
- The marks for **each** question are shown in brackets – *use this as a guide as to how much time to spend on each question.*

Advice

- Read each question carefully before you start to answer it.
- Keep an eye on the time.
- Try to answer every question.
- Check your answers if you have time at the end.

Turn over ►

P47103A

©2016 Pearson Education Ltd.

6/6/8/



PEARSON

Section B

Answer ALL questions.

Write your answers in the spaces provided.

You must write down all stages in your working.

You must NOT use a calculator for this section.

- 1 Write these numbers in order of size.
Start with the smallest number.

-4 8 6 4 -6 -3 -1

.....

(Total for Question 1 is 1 mark)

- 2 6 packets of crisps of the same type cost £5.10

What is the cost of 15 packets of this type?

£.....

(Total for Question 2 is 3 marks)

DO NOT WRITE IN THIS AREA

DO NOT WRITE IN THIS AREA

DO NOT WRITE IN THIS AREA



DO NOT WRITE IN THIS AREA

DO NOT WRITE IN THIS AREA

DO NOT WRITE IN THIS AREA

- 3 On Saturday the number of people on a ferry was 420
On Sunday the number of people on the ferry was 180

Write as a ratio the number of people on the ferry on Saturday to the number of people on the ferry on Sunday.
Give your answer in its simplest form.

.....

(Total for Question 3 is 2 marks)

- 4 (a) Work out $3.8 + 35.64 + 290 - 42.35$

.....

(2)

- (b) Work out 21.37×7

.....

(2)

(Total for Question 4 is 4 marks)



- 5 (a) Which is bigger, $\frac{1}{7}$ of 84 or $\frac{1}{8}$ of 112?

You must show all your working.

.....
(3)

- (b) Write 17 as a fraction of 30

.....
(1)

(Total for Question 5 is 4 marks)

- 6 Sally has worked out $\frac{31.2 \times 38.9}{0.48}$ on her calculator.

Her answer is 2528.5

Using suitable approximations, check that her answer is sensible.

.....
(Total for Question 6 is 3 marks)

DO NOT WRITE IN THIS AREA

DO NOT WRITE IN THIS AREA

DO NOT WRITE IN THIS AREA



DO NOT WRITE IN THIS AREA

DO NOT WRITE IN THIS AREA

DO NOT WRITE IN THIS AREA

7 (a) Work out $\frac{3}{8} + \frac{1}{4}$

.....
(2)

(b) Work out $\frac{3}{5} \times \frac{3}{7}$

.....
(1)

(Total for Question 7 is 3 marks)

8 Divide 168 in the ratio 3 : 5

.....
(Total for Question 8 is 2 marks)

9 The total price of a computer is £450 plus 20% VAT.
Work out the total price of the computer.

£.....

(Total for Question 9 is 3 marks)



10 Write 120 as a percentage of 400

.....%

(Total for Question 10 is 2 marks)

11 Work out $6\frac{4}{5} - 2\frac{1}{4}$

Give your answer as a mixed number in its simplest form.

.....
(Total for Question 11 is 3 marks)

TOTAL FOR SECTION B IS 30 MARKS
TOTAL FOR PAPER IS 80 MARKS

DO NOT WRITE IN THIS AREA

DO NOT WRITE IN THIS AREA

DO NOT WRITE IN THIS AREA



DO NOT WRITE IN THIS AREA

DO NOT WRITE IN THIS AREA

DO NOT WRITE IN THIS AREA

BLANK PAGE



DO NOT WRITE IN THIS AREA

DO NOT WRITE IN THIS AREA

DO NOT WRITE IN THIS AREA

BLANK PAGE

