

Write your name here

Surname

Other names

Pearson
Edexcel Award

Centre Number

--	--	--	--	--

Candidate Number

--	--	--	--

Number and Measure

Level 1

Section A (Calculator)

Tuesday 12 January 2016 – Morning

Time: 1 hour

Paper Reference

ANM10/1A

You must have: Ruler graduated in centimetres and millimetres, protractor, pen, HB pencil, eraser, calculator.

Total Marks



Instructions

- Use **black** ink or ball-point pen.
- **Fill in the boxes** at the top of this page with your name, centre number and candidate number.
- Answer **all** questions.
- Answer the questions in the spaces provided – *there may be more space than you need.*
- **Calculators may be used.**
- If your calculator does not have a π button, take the value of π to be 3.142 unless the question instructs otherwise.

Information

- The total mark for this section is 50
- The marks for **each** question are shown in brackets – *use this as a guide as to how much time to spend on each question.*

Advice

- Read each question carefully before you start to answer it.
- Keep an eye on the time.
- Try to answer every question.
- Check your answers if you have time at the end.

Turn over ►

P47101A

©2016 Pearson Education Ltd.

6/6



PEARSON

Section A

Answer ALL questions.

Write your answers in the spaces provided.

You must write down all stages in your working.

1 Here are two scales.



(a) Write down the number shown by the arrow.

.....
(1)

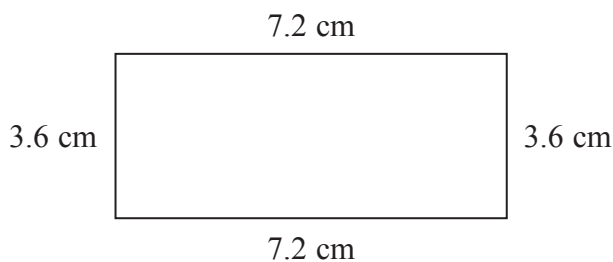


(b) Write down the number shown by the arrow.

.....
(1)

(Total for Question 1 is 2 marks)

2 Here is a rectangle.



(a) Work out the perimeter of the rectangle.

..... cm
(2)

(b) Work out the area of the rectangle.

..... cm²
(2)

(Total for Question 2 is 4 marks)

DO NOT WRITE IN THIS AREA

DO NOT WRITE IN THIS AREA

DO NOT WRITE IN THIS AREA



DO NOT WRITE IN THIS AREA

DO NOT WRITE IN THIS AREA

DO NOT WRITE IN THIS AREA

3 (a) Use your calculator to work out

(i) $33.5 + 9.75 - 12.96$

.....

(ii) $5.75 \div 2.5$

.....

(iii) 6.96×0.62

.....

(3)

(b) Write 8.61 correct to the nearest whole number.

.....

(1)

(Total for Question 3 is 4 marks)



4 Joe buys

4 tins of paint at £2.99 each

3 brushes at 95p each

1 dustsheet at £2.05

He pays with a £20 note.

How much change should Joe get?

£.....

(Total for Question 4 is 4 marks)

5 (a) Work out $\frac{5}{8}$ of 240

.....
(2)

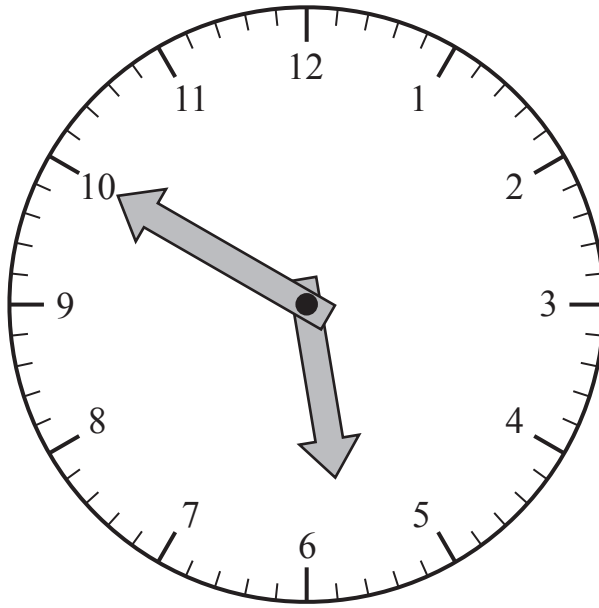
(b) Work out 30% of 240

.....
(2)

(Total for Question 5 is 4 marks)



6



It is **morning**.

(a) Write down the time shown on this clock.

.....
(2)

(b) Write 2 minutes 45 seconds in seconds.

..... seconds
(2)

(Total for Question 6 is 4 marks)

DO NOT WRITE IN THIS AREA

DO NOT WRITE IN THIS AREA

DO NOT WRITE IN THIS AREA

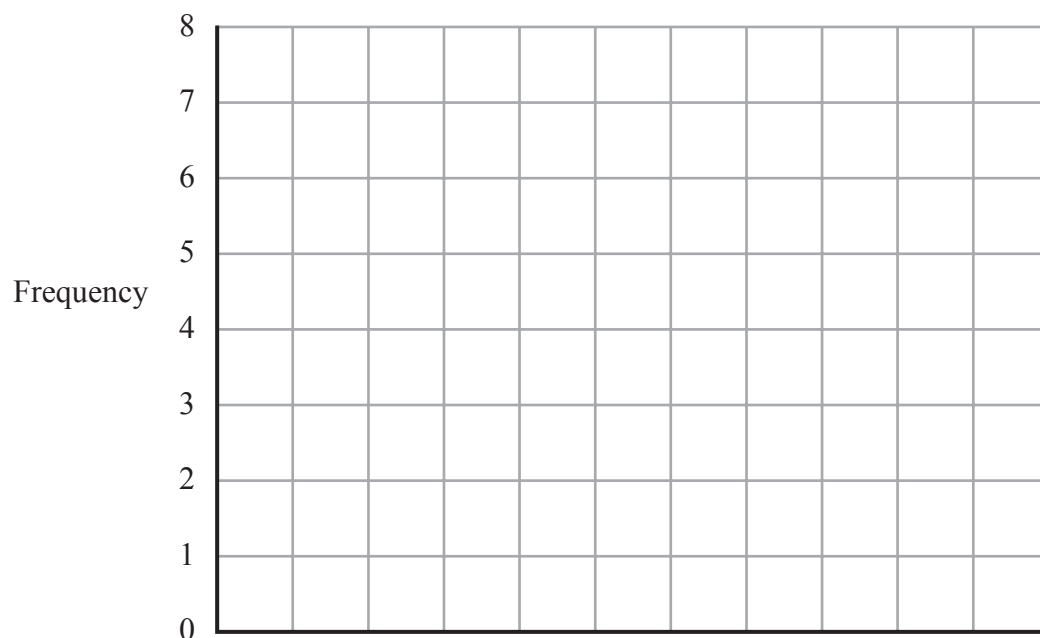


P 4 7 1 0 1 A 0 5 1 2

7 Here are the favourite flowers for all of the students in Becca's class.

Flower	Frequency
Daisy	3
Tulip	5
Rose	7
Iris	4
Carnation	3

(a) On the grid, draw a bar chart for this information.



(3)

(b) Which is the most popular flower?

.....
(1)

(Total for Question 7 is 4 marks)



DO NOT WRITE IN THIS AREA

DO NOT WRITE IN THIS AREA

DO NOT WRITE IN THIS AREA

8 Here is a mileage chart.
It shows the distances by road, in miles, between 4 cities.

London			
118	Bristol		
150	43	Cardiff	
187	81	42	Swansea

(a) Write down the distance between London and Cardiff.

..... miles
(1)

Gail drives

- from Bristol to Swansea
- then from Swansea to London
- then from London to Bristol

(b) Work out the total distance Gail drives.

..... miles
(2)

(Total for Question 8 is 3 marks)

9 Jason invests £400 at 2% interest for one year.

How much interest does he get at the end of the year?

£.....

(Total for Question 9 is 2 marks)

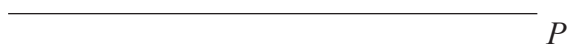


- 10 (a) Measure the length of the line XY .
Give your answer in centimetres.



..... cm
(1)

- (b) Draw an angle of 130° at point P .



(1)

(Total for Question 10 is 2 marks)

- 11 (a) Write these numbers in order of size.
Start with the smallest number.

35 102 29 83 9

.....
(1)

- (b) Write these numbers in order of size.
Start with the smallest number.

2.05 1.98 5.2 3.99 3.09

.....
(1)

- (c) Write these percentages in order of size.
Start with the smallest percentage.

45% 10% 70% 5% 50%

.....
(1)

(Total for Question 11 is 3 marks)



DO NOT WRITE IN THIS AREA

DO NOT WRITE IN THIS AREA

DO NOT WRITE IN THIS AREA

12 Here is Robbie's electricity bill.

He used 575 units of electricity.

Electricity Bill		December 2015
R. Williams 10 Hand St London		
Basic rate	200 units at 10p each	
Cheap rate	375 units at 7p each	
Monthly charge	£15.50	

Work out the total of Robbie's electricity bill.

(Total for Question 12 is 4 marks)



13 Here are some numbers.

12	15	24
8	20	
5	9	36

From these numbers,

(a) write down a prime number

.....
(1)

(b) write down a multiple of 10

.....
(1)

(c) write down a common factor of 24 and 36

.....
(1)

(Total for Question 13 is 3 marks)



DO NOT WRITE IN THIS AREA

DO NOT WRITE IN THIS AREA

DO NOT WRITE IN THIS AREA

14 Here is part of a calendar for June 2016

June 2016						
Sun	Mon	Tues	Weds	Thurs	Fri	Sat
			1	2	3	4
5	6	7	8	9	10	11

(a) What day of the week is the 27th June 2016?

.....
(1)

Lethna goes on holiday on the 27th June.
She returns 10 days later.

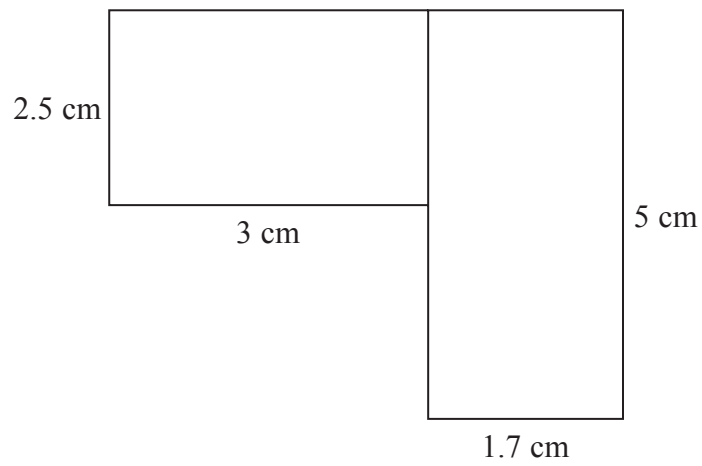
(b) What date does Lethna return from holiday?

.....
(2)

(Total for Question 14 is 3 marks)



15 The diagram shows a shape made from rectangles.



Find the total area of the shape.

(Total for Question 15 is 4 marks)

TOTAL FOR SECTION A IS 50 MARKS

DO NOT WRITE IN THIS AREA

DO NOT WRITE IN THIS AREA

DO NOT WRITE IN THIS AREA



Write your name here

Surname

Other names

Pearson
Edexcel Award

Centre Number

--	--	--	--	--

Candidate Number

--	--	--	--

Number and Measure

Level 1

Section B (Non-Calculator)

Tuesday 12 January 2016 – Morning

Time: 30 minutes

Paper Reference

ANM10/1B

You must have: Ruler graduated in centimetres and millimetres, protractor, pen, HB pencil, eraser.

Total Marks



Instructions

- Use **black** ink or ball-point pen.
- **Fill in the boxes** at the top of this page with your name, centre number and candidate number.
- Answer **all** questions.
- Answer the questions in the spaces provided – *there may be more space than you need.*
- **Calculators must not be used.**

Information

- The total mark for this section is 30
- The total mark for this paper is 80
- The marks for **each** question are shown in brackets – *use this as a guide as to how much time to spend on each question.*

Advice

- Read each question carefully before you start to answer it.
- Keep an eye on the time.
- Try to answer every question.
- Check your answers if you have time at the end.

Turn over ►

P47100A

©2016 Pearson Education Ltd.

6/6



PEARSON

Section B

Answer ALL questions.

Write your answers in the spaces provided.

You must write down all stages in your working.

You must NOT use a calculator for this section.

1 (a) Work out $405 + 7 + 56$

.....
(2)

(b) Work out $80 - 35.4$

.....
(2)

(c) Work out 38×7

.....
(2)

(Total for Question 1 is 6 marks)

DO NOT WRITE IN THIS AREA

DO NOT WRITE IN THIS AREA

DO NOT WRITE IN THIS AREA



DO NOT WRITE IN THIS AREA

DO NOT WRITE IN THIS AREA

DO NOT WRITE IN THIS AREA

2 (a) Which unit can be used to give the amount of water in a drinking glass?

.....
(1)

(b) Which unit can be used to give the height of a door?

.....
(1)

(Total for Question 2 is 2 marks)

3 (a) Work out $2\text{ m } 45\text{ cm} + 5\text{ m } 70\text{ cm} - 85\text{ cm}$

.....
(2)

(b) Change 4200 grams into kilograms.

..... kg
(1)

(Total for Question 3 is 3 marks)

4 Rashmi went to the cinema to see a film.

The film started at 19 05

The film lasted 125 minutes.

At what time did the film finish?

.....

(Total for Question 4 is 2 marks)



5 (a) Work out $320 \div 10$

.....
(1)

(b) Work out 6×9

.....
(1)

(c) Write the number 608 in words.

.....
(1)

(d) Write the number 4397 to the nearest thousand.

.....
(1)

(e) What is the value of the number 2 in 5.29?

.....
(1)

(Total for Question 5 is 5 marks)

6 Lili buys 6 mugs for £2.99 each.

Which one of these amounts gives a sensible estimate for the total cost?

- A 50p
- B £3
- C £12
- D £18
- E £1800

.....
(Total for Question 6 is 1 mark)

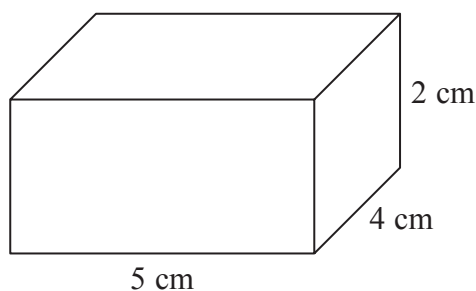


DO NOT WRITE IN THIS AREA

DO NOT WRITE IN THIS AREA

DO NOT WRITE IN THIS AREA

7 Here is a cuboid.

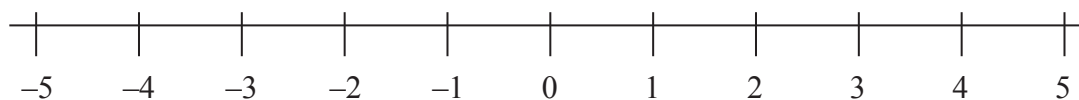


Work out the volume of the cuboid.

..... cm³

(Total for Question 7 is 2 marks)

8 Here is a number line.



Use the number line to work out

(a) $-4 + 6$

.....
(1)

(b) $2 - 5$

.....
(1)

(c) Arrange these numbers in order of size.
Start with the smallest number.

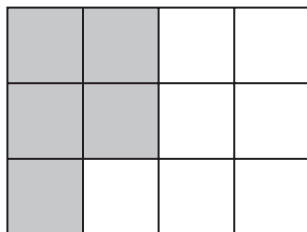
- 2 -2 4 0 -3

.....
(1)

(Total for Question 8 is 3 marks)



9 (a)



What fraction of this shape is shaded?

.....
(1)

(b) Write down a fraction that is equivalent to $\frac{3}{4}$

.....
(1)

(c) Write $\frac{3}{12}$ as a fraction in its simplest form.

.....
(1)

(d) Work out $\frac{9}{10} - \frac{6}{10}$

.....
(1)

(Total for Question 9 is 4 marks)

10 (a) Write $\frac{4}{5}$ as a decimal.

.....
(1)

(b) Write 60% as a fraction.

.....
(1)

(Total for Question 10 is 2 marks)

TOTAL FOR SECTION B IS 30 MARKS
TOTAL FOR PAPER IS 80 MARKS



DO NOT WRITE IN THIS AREA

DO NOT WRITE IN THIS AREA

DO NOT WRITE IN THIS AREA

BLANK PAGE



DO NOT WRITE IN THIS AREA

DO NOT WRITE IN THIS AREA

DO NOT WRITE IN THIS AREA

BLANK PAGE

