

Write your name here	
Surname	Other names
<b>Edexcel</b> <b>Principal Learning</b>	Centre Number
	Candidate Number
<b>Information Technology</b>	
<b>Level 3</b>	
<b>Unit 7: Making Projects Successful</b>	
Wednesday 20 January 2010 – Morning <b>Time: 1 hour 30 minutes</b>	Paper Reference <b>IT307/01</b>
<b>You do not need any other materials.</b>	Total Marks

### Instructions

- Use **black** ink or ball-point pen.
- **Fill in the boxes** at the top of this page with your name, centre number and candidate number.
- Answer **all** questions.
- Answer the questions in the spaces provided  
– *there may be more space than you need.*

### Information

- The total mark for this paper is 90.
- The marks for **each** question are shown in brackets  
– *use this as a guide as to how much time to spend on each question.*

### Advice

- Read each question carefully before you start to answer it.
- Keep an eye on the time.
- Try to answer every question.
- Check your answers if you have time at the end.

H36027A

©2010 Edexcel Limited.  
5/4/2



Turn over ►

**edexcel**  
advancing learning, changing lives

**Answer ALL the questions. Write your answers in the spaces provided.**

**Section A**

This section relates to the Delightful Cottages Ltd scenario.

**1** The project manager must produce a definition of scope for Delightful Cottages Ltd.

(a) In addition to the directors, identify **two** other stakeholders of the project. (2)

1.....

2.....

(b) Explain **two** benefits that Delightful Cottages Ltd will gain from this project. (4)

1.....

.....

.....

.....

2.....

.....

.....

.....

**(Total for Question 1 = 6 marks)**



**2** During start up, the project manager will have to consider the stages of the project lifecycle.

(a) Identify **two** further stages of the project.

(2)

1.....

2.....

(b) Describe **three** tasks that will have to be carried out during the start up stage of the project.

(6)

1.....

.....

.....

2.....

.....

.....

.....

3.....

.....

.....

.....

**(Total for Question 2 = 8 marks)**





**BLANK PAGE**



H 3 6 0 2 7 A 0 5 1 6

5

*Turn over* ▶

4 There is a delay at the design stage as a result of problems at one of the local offices. The project manager decides to use a cause and effect chart.

(a) Describe the purpose of a cause and effect chart.

(4)

.....

.....

.....

.....

.....

.....

.....

.....

.....

.....

(b) Identify **four** suitable categories that could be used on **this** cause and effect chart.

(4)

1.....

2.....

3.....

4.....





5 Throughout the project, the project manager will have to report to a project board to communicate progress against the project plan.

(a) Describe **two** features of project management software that will enable the project manager to **update** progress against the project plan.

(4)

1 .....

.....

.....

.....

2 .....

.....

.....

.....

(b) Figure 2 shows an updated project plan as of the 14<sup>th</sup> December.

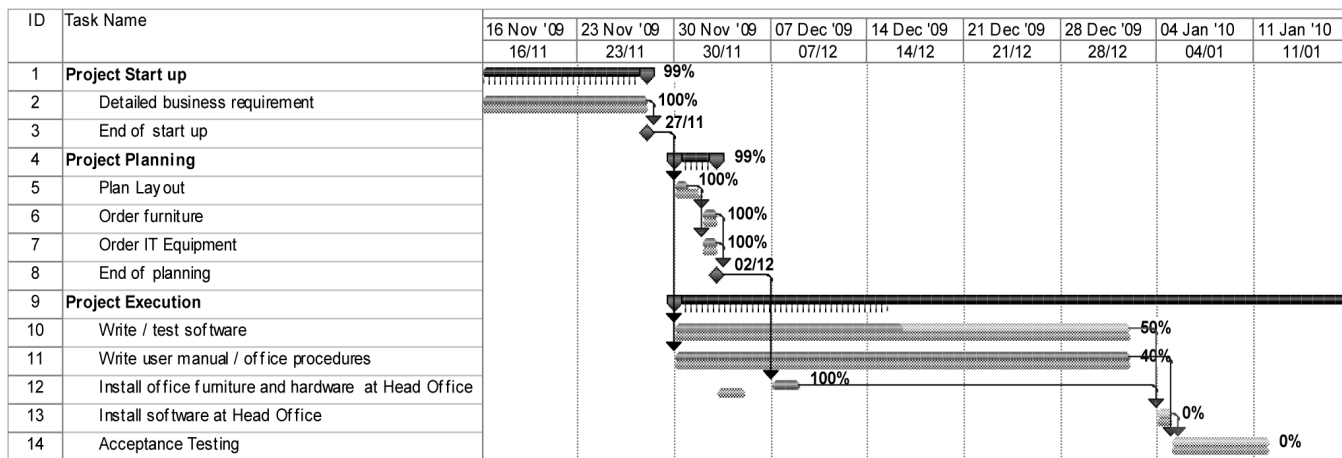


Figure 2





Outline the progress shown in Figure 2.

(12)

A series of horizontal dotted lines for writing the answer.

**(Total for Question 5 = 16 marks)**



6 Changing external factors could have implications for the project plan.

Explain how changes in government policy could affect the financing of the project.

.....

.....

.....

.....

.....

.....

.....

.....

.....

.....

**(Total for Question 6 = 4 marks)**





**Section B**

This section relates to the research that you have carried out into the 'Revenue On-Line' project for the Office of the Revenue Commissioners.

**8** (a) Identify **three** objectives of the Revenue On-Line project. (3)

1.....  
.....  
2.....  
.....  
3.....  
.....

(b) A key external factor was identified early in the project.

(i) Describe the external factor that could have affected this project. (2)

.....  
.....  
.....

(ii) Explain **two** actions that were taken once the external factor was identified. (4)

1.....  
.....  
.....  
.....  
2.....  
.....  
.....  
.....







**BLANK PAGE**



H 3 6 0 2 7 A 0 1 5 1 6

BLANK PAGE

