

Write your name here	
Surname	Other names
Edexcel Principal Learning	Centre Number
	Candidate Number
Hospitality	
Level 2	
Unit 1: Exploring the UK Hospitality Industry	
Wednesday 13 January 2010 – Morning Time: 1 hour	Paper Reference HO201/01
You do not need any other materials.	Total Marks

Instructions

- Use **black** ink or ball-point pen.
- **Fill in the boxes** at the top of this page with your name, centre number and candidate number.
- Answer **all** questions.
- Answer the questions in the spaces provided
– *there may be more space than you need.*

Information

- The total mark for this paper is 50.
- The marks for **each** question are shown in brackets
– *use this as a guide as to how much time to spend on each question.*

Advice

- Read each question carefully before you start to answer it.
- Keep an eye on the time.
- Try to answer every question.
- Check your answers if you have time at the end.

H37512A

©2010 Edexcel Limited.
5/4/



Turn over ►

edexcel
advancing learning, changing lives

Answer ALL questions. Write your answers in the space provided.

1 The hospitality industry includes restaurants and hospitality services.

(a) State **two** outlets found in the restaurant sector of the industry.

(2)

1

2

(b) State **two** outlets found in the hospitality services sector of the industry.

(2)

1

2

(Total for Question 1 = 4 marks)

2 The recent recession has forced the hospitality industry to reduce costs.

Describe **three** measures that the industry has used.

1

.....

.....

.....

2

.....

.....

.....

3

.....

.....

.....

(Total for Question 2 = 6 marks)



3 (a) State **two** suitable sources for researching job opportunities in the hospitality industry.

(2)

1

2

(b) State **three** key responsibilities of a restaurant manager.

(3)

1

2

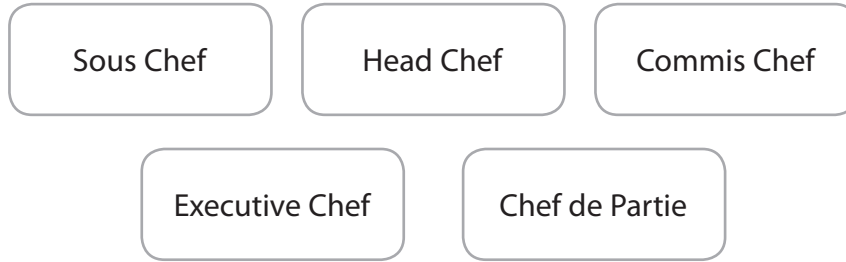
3

.....

(Total for Question 3 = 5 marks)

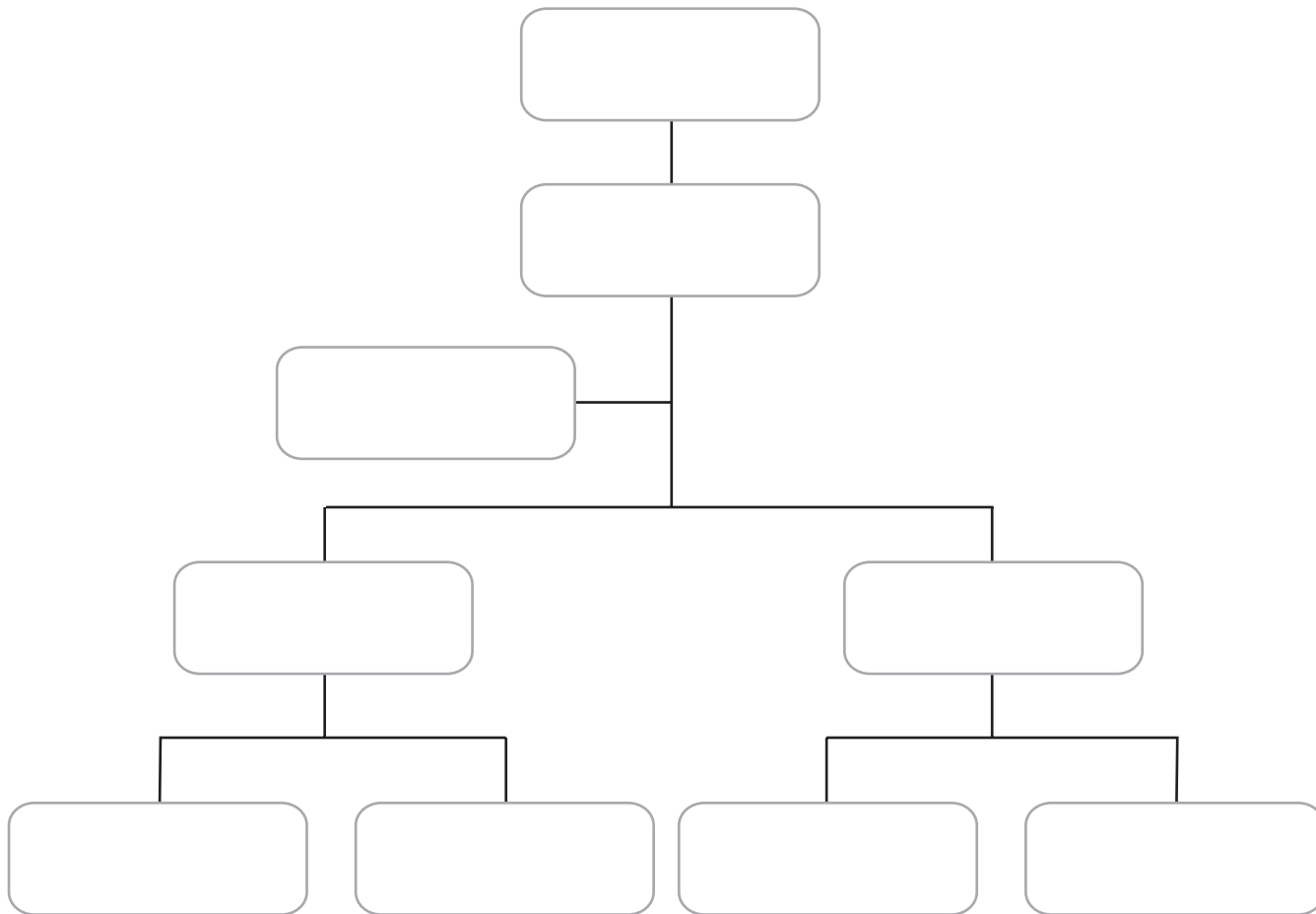


4 Listed below are the job roles for a typical kitchen brigade.



Complete the organisation chart below using only the job roles listed.

Some job roles may be used more than once.



(Total for Question 4 = 5 marks)



5 Study the data below on the number of people employed in the UK hospitality industry between 2004 and 2007.

Sector	2004	2005	2006	2007
Contract food service	197 600	178 300	182 600	181 600
Hospitality services	402 100	379 900	390 300	417 400
Hotels	247 100	238 400	238 500	245 000
Pubs, bars and nightclubs	368 400	333 900	297 700	319 600
Restaurants	518 700	514 700	499 700	526 700

(Source: Labour Force Survey)

(a) Which **two** industry sectors are showing growth in the numbers of people employed between 2004 and 2007?

(2)

1

2

(b) Identify **two** industry sectors that are showing a decline in the numbers of people employed between 2004 and 2007.

(2)

1

2

(c) Describe **one** way data can be used in a hospitality business.

(2)

.....

.....

.....

.....

(Total for Question 5 = 6 marks)



8 Explain the importance of the UK hospitality industry to the UK economy.

Dotted lines for writing.

(Total for Question 8 = 8 marks)

TOTAL FOR PAPER = 50 MARKS

