

Write your name here

Surname

Other names

**Edexcel
Principal Learning**

Centre Number

--	--	--	--	--

Candidate Number

--	--	--	--

**Environmental and Land-based Studies
Level 2
Unit 5: Plants and Animals and their Role in
Society**

Thursday 12 January 2012 – Morning

Time: 1 hour

Paper Reference

ES205/01

You must have:

Insert (enclosed)

Total Marks

--

Instructions

- Use **black** ink or ball-point pen.
- **Fill in the boxes** at the top of this page with your name, centre number and candidate number.
- Answer **all** questions.
- Answer the questions in the spaces provided
– *there may be more space than you need.*

Information

- The total mark for this paper is 50.
- The marks for **each** question are shown in brackets
– *use this as a guide as to how much time to spend on each question.*

Advice

- Read each question carefully before you start to answer it.
- Keep an eye on the time.
- Try to answer every question.
- Check your answers if you have time at the end.

Turn over ►

P39447A

©2012 Pearson Education Ltd.

1/1/1/1/1



PEARSON

Answer ALL questions. Write your answers in the space provided.

1 Study Figure 1. It is a partly completed diagram to show how plants can be classified and identified.

Complete the diagram by using the information from the word list below to fill in the empty boxes.

WORD LIST Fungi Do not have seeds Conifers Flowering Parasitic

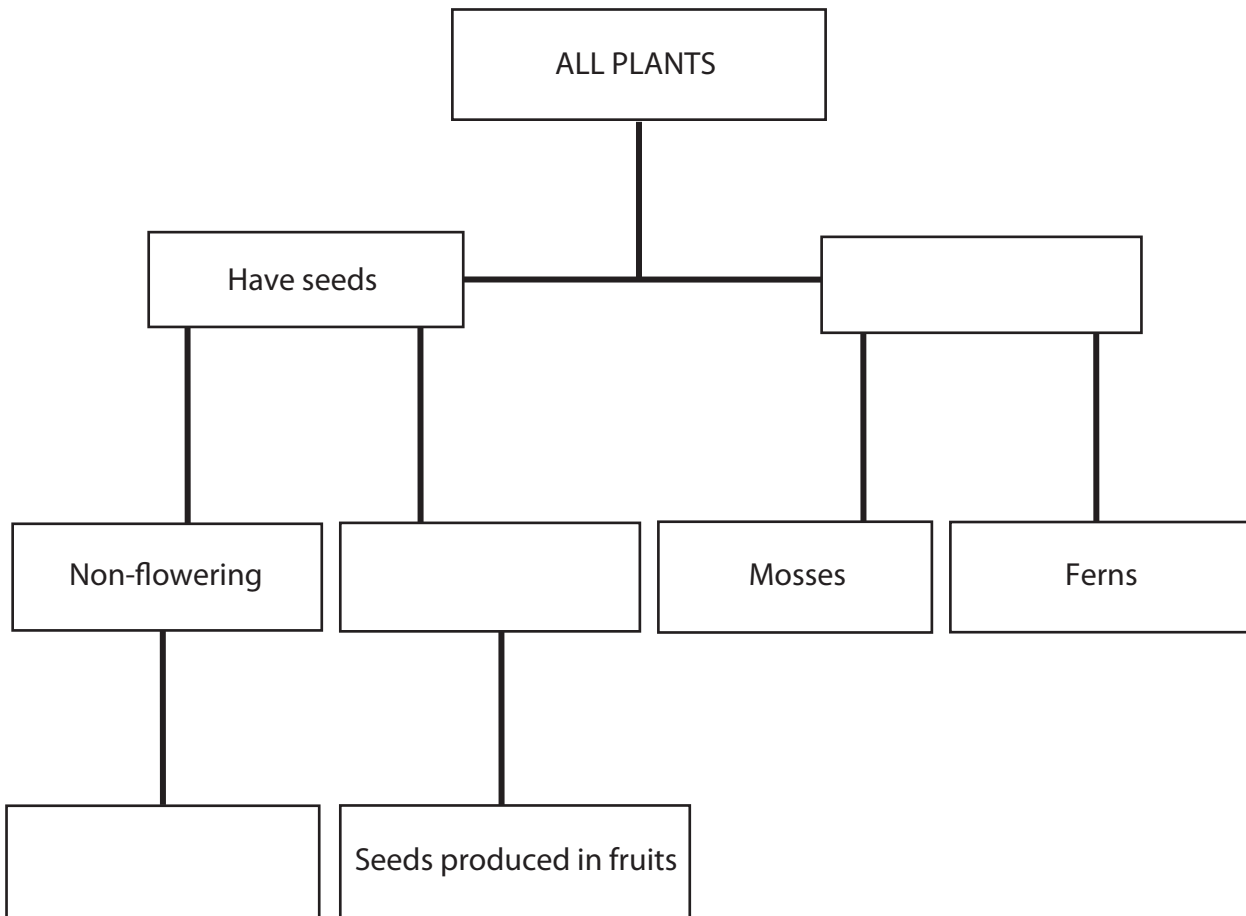


Figure 1

(Total for Question 1 = 3 marks)



2 Study the graph in Figure 2. It shows the value of flowers grown in the UK between 1986 and 2004.

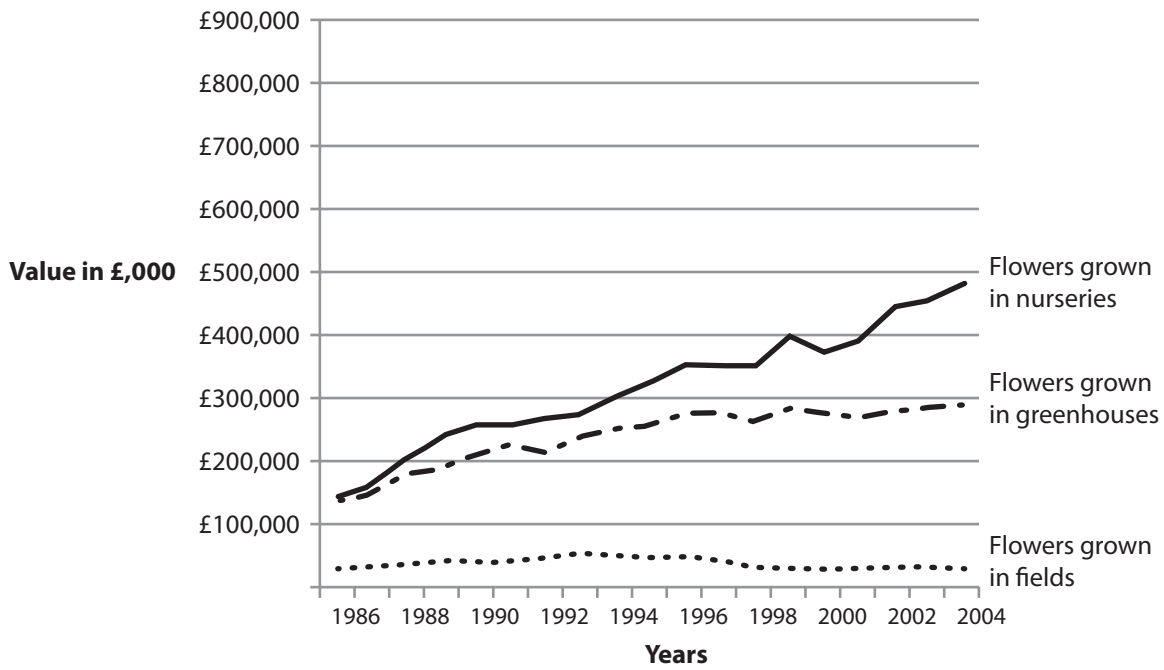


Figure 2

(a) What type of flower cultivation has shown the greatest increase in value?

(1)

(b) Suggest reasons for the differences in the value between flowers grown in fields and flowers grown in greenhouses (protected cropping).

(3)

(Total for Question 2 = 4 marks)



3 Study Figure 3 in the insert. It shows photographs of beef cattle raised in two different ways: **intensive** and **extensive** beef production.

(a) Choose **one** of these methods and describe it in detail.

(4)

.....

.....

.....

.....

.....

.....

.....

.....

.....

.....

(b) What are the benefits of artificial selection for improving animal productivity for human consumption?

(4)

.....

.....

.....

.....

.....

.....

.....

.....

.....

.....

(Total for Question 3 = 8 marks)



4 A major supermarket in the UK sells the following plant foodstuffs:

Group	Foodstuffs
Vegetables	cabbages, turnips, peas, carrots
Fruits	apples, bananas, grapes, strawberries
Cereals	oats, wheat, rice, maize

Figure 4

The quality and quantity of foodstuffs are major concerns for retailers (supermarkets, greengrocers, etc.).

(a) Choose **one** of the groups in Figure 4 and state where **quality** would be more important to the retailer. Give reasons for your choice.

(4)

.....

.....

.....

.....

.....

.....

.....

.....

.....

.....

(b) Choose **one** of the groups in Figure 4 and state where **quantity** would be more important to the retailer. Give reasons for your choice.

(4)

.....

.....

.....

.....

.....

.....

.....

.....

.....

.....

(Total for Question 4 = 8 marks)



BLANK PAGE
QUESTIONS CONTINUE ON PAGE 8.



6 Study Figure 6(a) in the insert. It is a map showing a forest plantation with a number of different land uses and users of the land.

Figure 6(b) is a 'Conflict Matrix' developed from the results of a questionnaire in the local area and shows the level of conflict between different land users.

Land use groups	Conflict matrix				
Water company	2	4	1	1	
Forestry Commission	5	5	4		
Local residents	1	1			
Walkers	5				
Horse riders					
	Horse riders	Walkers	Local residents	Forestry Commission	Water company
<p>5 = High degree of conflict</p> <p>1 = Low degree of conflict</p>					

Figure 6(b)

(a) (i) Select **two** groups that have a high degree of conflict with each other.

(1)

..... and



(d) Suggest how an organisation, such as the Forestry Commission, would inform local residents that it needs to clear fell area X.

(4)

.....

.....

.....

.....

.....

.....

.....

.....

.....

.....

(Total for Question 6 = 21 marks)

TOTAL FOR PAPER = 50 MARKS



BLANK PAGE



Edexcel Principal Learning

Environmental and Land-based Studies

Level 2

Unit 5: Plants and Animals and their Role in Society

Thursday 12 January 2012 – Morning

Insert

Paper Reference

ES205/01

Do not return this insert with the question paper.

Turn over ►

P39447A

©2012 Pearson Education Ltd.

1/1/1/1/1



PEARSON



Intensive beef production



Extensive beef production

Figure 3

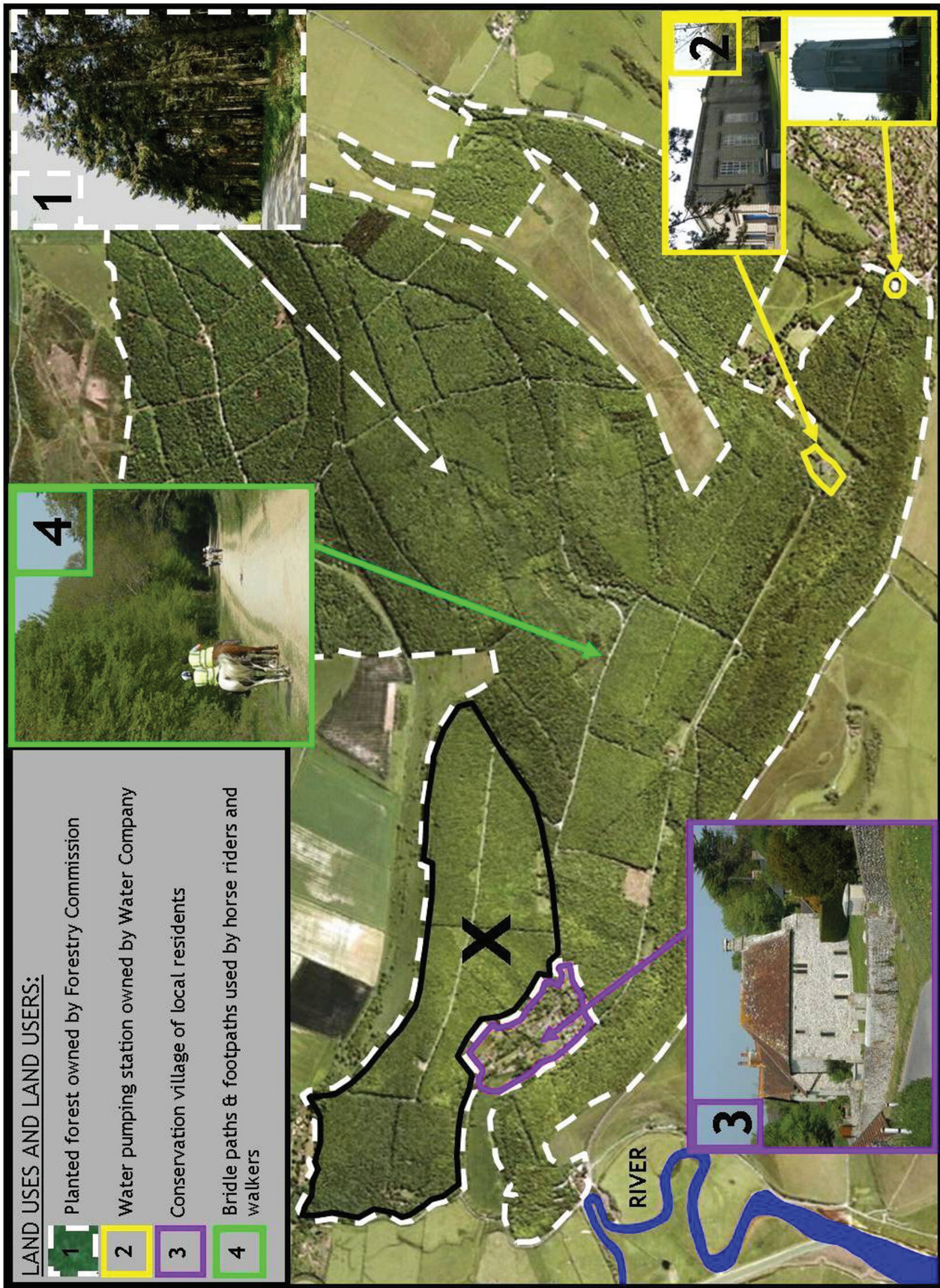


Figure 6(a)



Figure 6(c)