

CAMBRIDGE TECHNICALS LEVEL 2 (2016)

Examiners' report

HEALTH AND SOCIAL CARE

05890, 05880, 05881

Unit 1 Summer 2022 series

Contents

- Introduction4
- Unit 1 series overview5
 - Learning outcome 1: Questions 1 - 85
 - Learning outcome 2: Questions 9 – 14.....5
 - Learning outcome 3: Questions 15 - 206
 - Learning outcome 4: Questions 21 – 28.....6
 - Copyright information.....7
- Questions8
 - Question 18
 - Question 28
 - Question 39
 - Question 49
 - Question 510
 - Question 610
 - Question 711
 - Question 811
 - Question 912
 - Question 1012
 - Question 1113
 - Question 1213
 - Question 1314
 - Question 1414
 - Question 1515
 - Question 1615
 - Question 1716
 - Question 1816
 - Question 1917
 - Question 2017
 - Question 2118
 - Question 2218
 - Question 2319
 - Question 2419
 - Question 2520
 - Question 2620

Question 2721

Question 2821

Question 2922

Question 3022

Question 3123

Question 3224

Question 3325

Question 3426

Question 3527

Question 3627

Question 3728

Question 3828

Question 3929

Question 4029

Introduction

Our examiners' reports are produced to offer constructive feedback on candidates' performance in the examinations. They provide useful guidance for future candidates.

The reports will include a general commentary on candidates' performance, identify technical aspects examined in the questions and highlight good performance and where performance could be improved. The reports will also explain aspects which caused difficulty and why the difficulties arose, whether through a lack of knowledge, poor examination technique, or any other identifiable and explainable reason.

Where overall performance on a question/question part was considered good, with no particular areas to highlight, these questions have not been included in the report.

A full copy of the question paper and the mark scheme can be downloaded from OCR.

Would you prefer a Word version?

Did you know that you can save this PDF as a Word file using Acrobat Professional?

Simply click on **File > Export to** and select **Microsoft Word**

(If you have opened this PDF in your browser you will need to save it first. Simply right click anywhere on the page and select **Save as . . .** to save the PDF. Then open the PDF in Acrobat Professional.)

If you do not have access to Acrobat Professional, there are a number of **free** applications available that will also convert PDF to Word (search for PDF to Word converter).

Unit 1 series overview

This was the eighth series of assessment for this unit. The unit contains a large breadth of knowledge and, as is to be expected, candidates performed better on some Learning Objectives (LOs) than on other LOs. Similarly, even within each LO candidate performance varied across the range of questions which assessed that LO.

Candidates on average performed best on those questions which assessed LO1 and LO4 and least well on those questions which were targeted at LO5.

| Candidates who did well on this paper generally did the following: | Candidates who did less well on this paper generally did the following: |
|--|---|
| <ul style="list-style-type: none"> performed well across each of the six learning objectives. | <ul style="list-style-type: none"> displayed gaps in their knowledge in relation to individual learning objectives or across the unit specification content. |

Learning outcome 1: Questions 1 - 8

This LO requires the candidates to know the principles of maintaining health, safety and security and to know basic emergency procedures. Performance on this LO in this series was joint highest across all six LOs.

The majority of candidates selected the correct response to Questions 6, 7 and 8. With Question 8, which related to the correct identification of a safety sign, being the best answered.

The least well answered was Question 2. This question required candidates to identify a potential hazard for an individual in a care setting.

Learning outcome 2: Questions 9 – 14

This LO covers the principles of equality and diversity in health care, social care and childcare environments. Candidates performed well on these questions.

The majority of candidates selected the correct response to Question 11 which related to an example of prejudice by a member of staff within a care home setting.

Question 10 (impacts of the Equality Act) and Question 14 (ways to challenge discriminatory practice in a care setting) were the least well answered questions within this LO.

Learning outcome 3: Questions 15 - 20

LO3 covers the principles of individual rights and the key features of a person-centred approach. This was section was the least well answered this series.

Question 18 proved to be the most challenging question in this LO with many students not identifying the organisation responsible for providing guidelines on how conditions should be treated.

Question 15 (definition of working in a person-centred way) and Question 16 (about the care certificate, standard 5) were the best answered questions within this section.

Learning outcome 4: Questions 21 – 28

The fourth LO requires the candidates to know key facts about safeguarding. Performance on this LO in this series was joint highest across all six LOs.

The majority of candidates selected the correct response to Question 24. This question related to a carer's response to an individual disclosing abuse.

The least well answered question was Question 21, which related to which organisation had a role in ensuring schools support safeguarding.

Learning outcome 5: Questions 29 – 34

LO5 covers aspects of anatomy and physiology, and candidate performance was inconsistent. By far the least well answered question within the exam was in this section (Question 33).

Question 33 asked students to correctly identify a part of the kidney. Question 32 and Question 34 used the same diagram as Question 33 and were also incorrectly answered by a significant number of students.

Assessment for learning



For Question 32, 33 and 34 candidates needed to be able to name key parts of a kidney. Students should be encouraged to practice the skill of naming key parts on diagrams of the main organs listed in the specification.

By contrast the majority of candidates selected the correct response to Question 30 (identifying a condition which is mainly caused by diet), and this was one of the most well answered questions on the exam, with the majority of the cohort selecting the correct answer.

Learning outcome 6: Questions 35 – 40

The sixth and final LO requires the candidates to know the principles of effective communication. Candidate performance within this section fluctuated much like the performance in L05.

Question 38 was the most well answered question within the exam. This question related to support that could be given to an individual who was unable to communicate in English. Nearly all candidates answered this question correctly.

Question 39 was the second least well answered question within the exam. This question required candidates to identify a principle of SOLER and most answers were incorrect.

Assessment for learning



Students are required to understand the components which make up acronyms, such as SOLER, as part of this qualification.

Copyright information

Any reference to existing companies or organisations is entirely coincidental and is not intended as a depiction of those companies or organisations.

Questions

Question 1

Which of the following is a social care setting?

- A
- B
- C
- D

[1]

Question 2

Which of the following is a potential hazard to an individual in a health care setting?

- A
- B
- C
- D

[1]

Question 3

Which of the following is an example of hazardous waste in a health care setting?

A Electrical items

B Equipment

C Soiled bed linen

D Trip hazards

[1]

Question 4

What is the first stage of a risk assessment?

A Assess who might be harmed and how.

B Evaluate the risk.

C Look for hazards.

D Review the risk assessment.

[1]

Question 5

What should a carer always do when moving and handling objects and people?

A Activate the alarm system.

B Give advice.

C Inspect the premises.

D Risk assess the lift.

[1]

Question 6

What is a nursery nurse doing when they carry out general cleaning of toys in the nursery?

A Disposing of hazardous waste.

B Following prohibition signs.

C Maintaining a safe and hygienic environment.

D Reducing personal hygiene.

[1]

Question 7

Where could a health care worker take medication to dispose of it?

A College

B Crèche

C Hospital

D Opticians

[1]

Question 8

What is the meaning of this warning sign?



A Clinical waste

B Irritant

C Low temperature

D Trip hazard

[1]

Question 9

The lunch menu in a day centre offers vegan and vegetarian options.

Which of the following is being valued?

A Discrimination

B Diversity

C Labelling

D Stereotyping

[1]

Question 10

The Equality Act makes which of the following illegal?

A Breastfeeding in public.

B Pay secrecy clauses.

C Protected characteristics.

D Reasonable adjustments.

[1]

Question 11

A care assistant in a residential home serves male residents before serving female residents.

This is an example of which of the following?

- A
- B
- C
- D

[1]

Question 12

Which of the following is an aspect of diversity that should be valued in care environments?

- A
- B
- C
- D

[1]

Question 13

Which of the following prohibits discrimination in education, employment, access to goods, services and housing?

A Data Protection Act

B Equality Act

C Health and Safety At Work Act

D Health and Social Care Act

[1]

Question 14

What should be provided to staff to challenge discriminatory practice in care settings?

A Diversity training

B Individual rights

C Prohibition signs

D Specialist terminology

[1]

Question 15

Which of the following defines working in a person-centred way?

A Helping to improve survival rates.

B Practitioners working together with an individual.

C Providing information about equality and rights.

D Safeguarding vulnerable groups.

[1]

Question 16

The Care Certificate, Standard 5 is about working in a way that promotes person-centred values.

Which of the following is one of these values?

A Designation

B Dignity

C Disclosure

D Duty

[1]

Question 17

Person-centred planning is based on which of the following beliefs?

- A
- B
- C
- D

[1]

Question 18

What is the name of the organisation that provides guidelines on how conditions should be treated?

- A
- B
- C
- D

[1]

Question 19

Which of the following is a **childcare** value of care?

A Consultation

B Individual rights

C Maintaining confidentiality

D Value for money

[1]

Question 20

What legislation protects those who are unable to make their own decisions?

A Data Protection Act

B Health and Safety at Work Act

C Health and Social Care Act

D Mental Capacity Act

[1]

Question 21

Which organisation has a role in ensuring that schools support safeguarding?

A Age UK

B Care Quality Commission (CQC)

C Department for Education (DFE)

D National Institute for Health and Care Excellence (NICE)

[1]

Question 22

What service can be offered by organisations that are responsible for safeguarding?

A Cleaning products

B Helplines

C Lifting equipment

D Personal belongings

[1]

Question 23

Which of the following is a role of the Care Quality Commission (CQC)?

A Adapting the environment.

B Providing care homes.

C Setting supporting legislation.

D Setting the standards of care required.

[1]

Question 24

How should a carer respond to an individual who is disclosing abuse?

A By being patronising.

B By using active listening.

C By using inappropriate body language.

D By using specialist terminology.

[1]

Question 25

Individuals living in a residential home are suffering from malnourishment.

What type of abuse does this most likely suggest?

- A
- B
- C
- D

[1]

Question 26

The Care Quality Commission (CQC) is supervising a care home and helping them improve within a set timescale.

- A
- B
- C
- D

[1]

Question 27

Which of the following means an individual is most at risk of abuse?

A Having a duty of care.

B Having a duty to report.

C Having a learning disability.

D Having control over care.

[1]

Question 28

Poor personal hygiene may be an indicator of which of the following?

A Abuse

B Empathy

C Obesity

D Respect

[1]

Question 29

Which of the following is a **major** cause of coronary heart disease?

A Exposure to workplace pollutants.

B Hepatitis C.

C Lifestyle.

D Substance abuse.

[1]

Question 30

Which of these conditions could be **mainly** caused by diet?

A Autism

B Cirrhosis

C Deafness

D Obesity

[1]

Question 31

The ovaries are part of which main body system?

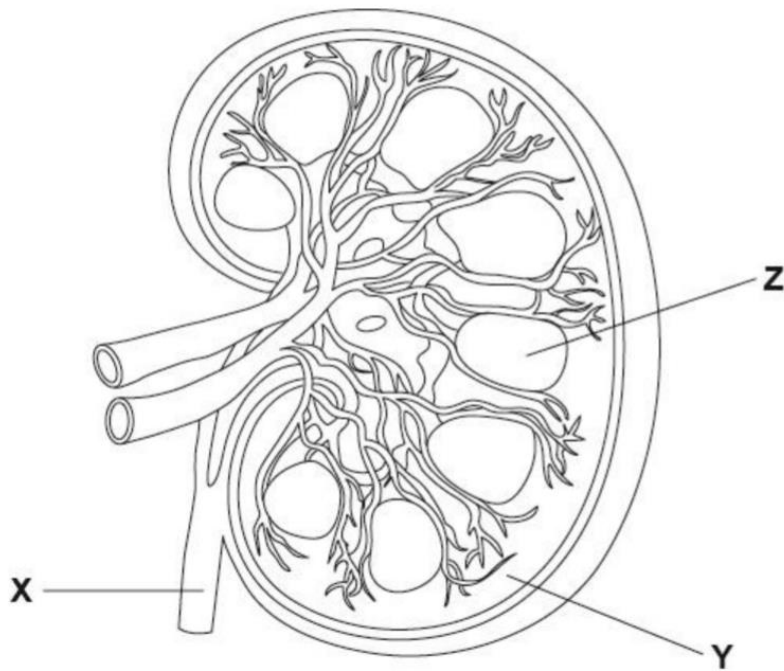
- A
- B
- C
- D

[1]

Question 32

Fig.1: Diagram of a kidney.

What is part **X** on Fig.1?



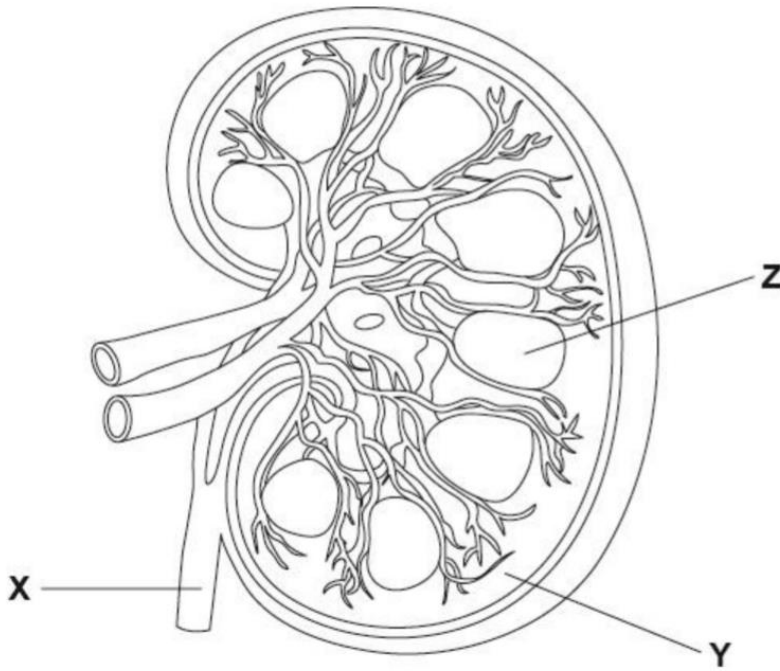
- A
- B
- C
- D

[1]

Question 33

Fig.1: Diagram of a kidney.

What is part Y on Fig.1?



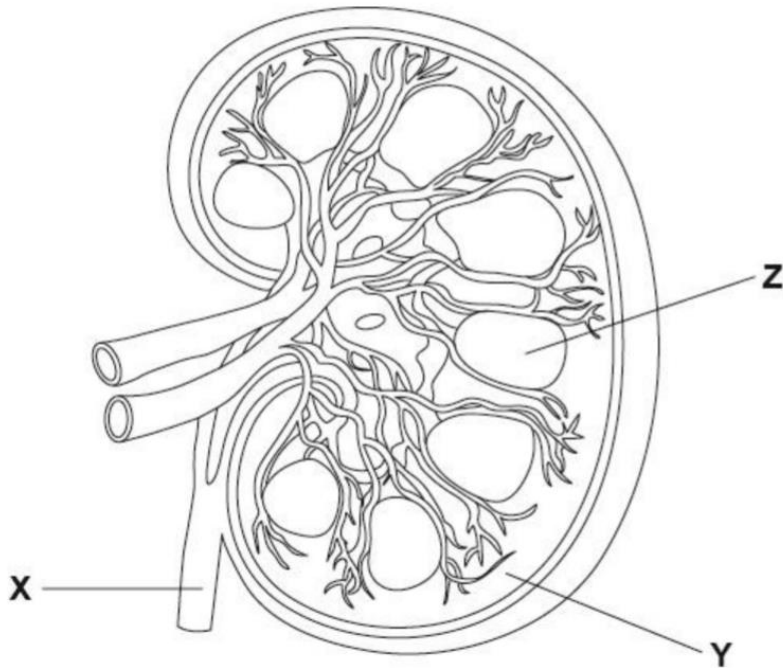
- A
- B
- C
- D

[1]

Question 34

Fig.1: Diagram of a kidney.

What is part **Z** on Fig.1?



- A
- B
- C
- D

[1]

Question 35

Which of the following may cause communication difficulties due to illness or disability?

- A
- B
- C
- D

[1]

Question 36

What is patience?

- A
- B
- C
- D

[1]

Question 37

Which of the following can be an **environmental** barrier to communication?

A Safeguarding

B SOLER

C Space

D Specialist

[1]

Question 38

If an individual is unable to communicate in English which of the following should they be provided with?

A An alarm

B A lanyard

C A policy

D A translator

[1]

Question 39

Which of the following is a principle of SOLER?

A Ask

B Inform

C Relax

D Response

[1]

Question 40

Which of the following is a barrier to communication?

A Access

B Aggression

C Empathy

D Risk

[1]

Supporting you

Post-results services

If any of your students' results are not as expected, you may wish to consider one of our post-results services. For full information about the options available visit the [OCR website](#).

Keep up-to-date

We send a weekly roundup to tell you about important updates. You can also sign up for your subject specific updates. If you haven't already, [sign up here](#).

OCR Professional Development

Attend one of our popular CPD courses to hear directly from a senior assessor or drop in to a Q&A session. Most of our courses are delivered live via an online platform, so you can attend from any location.

Please find details for all our courses on the relevant subject page on our [website](#) or visit [OCR professional development](#).

Signed up for ExamBuilder?

ExamBuilder is the question builder platform for a range of our GCSE, A Level, Cambridge Nationals and Cambridge Technicals qualifications. [Find out more](#).

ExamBuilder is **free for all OCR centres** with an Interchange account and gives you unlimited users per centre. We need an [Interchange](#) username to validate the identity of your centre's first user account for ExamBuilder.

If you do not have an Interchange account please contact your centre administrator (usually the Exams Officer) to request a username, or nominate an existing Interchange user in your department.

Need to get in touch?

If you ever have any questions about OCR qualifications or services (including administration, logistics and teaching) please feel free to get in touch with our customer support centre.

Call us on
01223 553998

Alternatively, you can email us on
support@ocr.org.uk

For more information visit

 **ocr.org.uk/qualifications/resource-finder**

 **ocr.org.uk**

 **/ocrexams**

 **/ocrexams**

 **/company/ocr**

 **/ocrexams**

We really value your feedback

Click to send us an autogenerated email about this resource. Add comments if you want to. Let us know how we can improve this resource or what else you need. Your email address will not be used or shared for any marketing purposes.



Please note – web links are correct at date of publication but other websites may change over time. If you have any problems with a link you may want to navigate to that organisation’s website for a direct search.



OCR is part of Cambridge University Press & Assessment, a department of the University of Cambridge.

For staff training purposes and as part of our quality assurance programme your call may be recorded or monitored. © OCR 2022 Oxford Cambridge and RSA Examinations is a Company Limited by Guarantee. Registered in England. Registered office The Triangle Building, Shaftesbury Road, Cambridge, CB2 8EA. Registered company number 3484466. OCR is an exempt charity.

OCR operates academic and vocational qualifications regulated by Ofqual, Qualifications Wales and CCEA as listed in their qualifications registers including A Levels, GCSEs, Cambridge Technicals and Cambridge Nationals.

OCR provides resources to help you deliver our qualifications. These resources do not represent any particular teaching method we expect you to use. We update our resources regularly and aim to make sure content is accurate but please check the OCR website so that you have the most up to date version. OCR cannot be held responsible for any errors or omissions in these resources.

Though we make every effort to check our resources, there may be contradictions between published support and the specification, so it is important that you always use information in the latest specification. We indicate any specification changes within the document itself, change the version number and provide a summary of the changes. If you do notice a discrepancy between the specification and a resource, please [contact us](#).

You can copy and distribute this resource freely if you keep the OCR logo and this small print intact and you acknowledge OCR as the originator of the resource.

OCR acknowledges the use of the following content: N/A

Whether you already offer OCR qualifications, are new to OCR or are thinking about switching, you can request more information using our [Expression of Interest form](#).

Please [get in touch](#) if you want to discuss the accessibility of resources we offer to support you in delivering our qualifications.