

CAMBRIDGE TECHNICALS LEVEL 2 (2016)

Examiners' report

HEALTH AND SOCIAL CARE

05890, 05880, 05881

Unit 1 January 2022 series

Contents

Introduction	3
Unit 1 series overview	4
Learning outcome 1: questions 1 - 8	4
Learning outcome 2: questions 9 - 14	4
Learning outcome 3: questions 15 – 20	5
Learning outcome 4: questions 21 – 28	5
Learning outcome 5: questions 29 – 34	5
Learning outcome 6: questions 35 – 40	5
Appendix 1 Questions	6
Copyright information.....	30

Introduction

Our examiners' reports are produced to offer constructive feedback on candidates' performance in the examinations. They provide useful guidance for future candidates.

The reports will include a general commentary on candidates' performance, identify technical aspects examined in the questions and highlight good performance and where performance could be improved. The reports will also explain aspects which caused difficulty and why the difficulties arose, whether through a lack of knowledge, poor examination technique, or any other identifiable and explainable reason.

Where overall performance on a question/question part was considered good, with no particular areas to highlight, these questions have not been included in the report.

A full copy of the question paper is attached as an Appendix at the end of this report. The mark scheme can be downloaded from OCR.

Would you prefer a Word version?

Did you know that you can save this PDF as a Word file using Acrobat Professional?

Simply click on **File > Export to** and select **Microsoft Word**

(If you have opened this PDF in your browser you will need to save it first. Simply right click anywhere on the page and select **Save as . . .** to save the PDF. Then open the PDF in Acrobat Professional.)

If you do not have access to Acrobat Professional there are a number of **free** applications available that will also convert PDF to Word (search for PDF to Word converter).

Unit 1 series overview

This was the seventh series of assessment for this unit. The unit contains a large breadth of knowledge and, as is to be expected, candidates performed better on some Learning Objectives (LOs) than on other LOs. Similarly, even within each LO candidate performance varied across the range of questions which assessed that LO.


Candidates on average performed best on those questions which assessed LO4 and LO6 and least well on those questions which were targeted at LO3.

<i>Candidates who did well on this paper generally did the following:</i>	<i>Candidates who did less well on this paper generally did the following:</i>
<ul style="list-style-type: none"> Performed well across each of the six Learning Objectives. 	<ul style="list-style-type: none"> Had gaps in their knowledge in relation to individual Learning Objectives or across the unit specification content.

Learning outcome 1: questions 1 – 8

This LO requires the candidates to know the principles of maintaining health, safety and security and to know basic emergency procedures. This was one of the LOs on which the candidates performed less successfully in this examination.


The majority of candidates selected the correct response to Question 8 which related to the correct identification of a safety sign. The least well answered question was Question 6 with few candidates selecting the correct response. This question related to evacuation procedures in a social care environment.

	AfL	For this question candidates were asked to identify “Which of the following is not part of the evacuation procedure in a social care environment?”. It is possible that candidates misread the question, and the word ‘not’ was missed. It may help future candidates to be aware that they should look for words in bold in the question.
---	------------	---

Learning outcome 2: questions 9 – 14

This LO covers the principles of equality and diversity in health care, social care and child care environments. Candidates performed well on these questions.

The majority of candidates selected the correct response to Question 14 which related to the support services available to a care worker being discriminated against within the work environment. Although the correct response for Question 12 was given by a majority of candidates, it was the least well answered question within this LO. This particular question related to a day centre offering different activities to males and females.

	AfL	For Question 12 candidates needed to be able to choose from four key words. Candidates might benefit from building a glossary of key terms in addition to those given in the delivery guide.
---	------------	--

Learning outcome 3: questions 15 – 20

LO3 covers the principles of individual rights and the key features of a person-centred approach. This was the least well answered section within this examination.

By far the least well answered question within the examination was in this section. Question 20 proved to be one of the most challenging questions on the paper with few candidates selecting the correct response. This question related to legislation which supports an individual's rights. Whereas Question 15 (about a nursery nurse working in partnership with parents, carers and families) and Question 16 (about ways in which children's learning and development can be encouraged) were the best answered questions within this section of the examination.

Learning outcome 4: questions 21 – 28

The fourth LO requires the candidates to know key facts about safeguarding. Performance on this LO in this examination series was the highest across all six LOs. The correct response to each question was selected by most candidates.

The majority of candidates selected the correct response to Question 21. This question related to aspects of abuse suffered by a patient. The least well answered question was Question 26 which related to the disclosure of abuse.

Learning outcome 5: questions 29 – 34

LO5 covers aspects of anatomy and physiology and candidate performance was generally sound with a significant number of responses being selected in relation to each question, with the exception of Question 29 which related to causes of chronic pulmonary disorder. By way of a contrast the majority of candidates selected the correct response to Question 30. This question related to the identification of body parts within a skeleton.

Learning outcome 6: questions 35 – 40

The sixth and final LO requires the candidates to know the principles of effective communication. Candidate performance within this section of the examination was almost as good as that in relation to LO4.

As was the case in relation to LO4 the questions within this section of the examination were well answered by a majority of the candidates. Question 39 was the most well answered question. This question related to the health conditions which were most likely to lead to communication difficulties. Questions 35 and 40 were the least well answered questions within this section of the examination. Question 35 related to environmental barriers to communication. Whereas Question 40 related to examples of written communication likely to be used in a childcare group setting.

Appendix 1 Questions

Question 1

Which of the following is a health care setting?

A After-school club

B College

C Crèche

D Walk-in centre

[1]

Question 2

A kitchen assistant cuts their finger. What colour plaster should they wear when preparing food?

A Blue

B Green

C Red

D Yellow

[1]

Question 3

Which of the following should be included in the general cleaning of a nursery?

- A Cold-water sterilising
- B Giving first aid
- C Use of yellow bags for clinical waste
- D Vacuuming

[1]

Question 4

Which of the following is an item of PPE?

- A Clean clothes
- B Cutlery
- C ID badge
- D Overalls

[1]

Question 5

Which of the following improves security in a care setting?

A Dealing with spillages

B Disposal of hazardous waste

C Monitoring of keys

D Safety signs

[1]

Question 6

Which of the following is **not** part of the evacuation procedure in a social care environment?

A Carry out head count

B Close doors and windows

C Raise the alarm

D Record the findings

[1]

Question 7

Which individuals in a college have designated staff to assist them in an emergency evacuation?

A Child Protection Officer

B Practitioners

C Senior staff

D Vulnerable adults

[1]

Question 8

What does this safety sign mean?



A Ear protection must be worn

B Low temperature

C No access for unauthorised persons

D No entry/prohibited access

[1]

Question 9

Which of the following is an aspect of diversity that should be valued in a care environment?

A Promoting recovery

B Secrecy clauses

C Sexual orientation

D Working in partnership

[1]

Question 10

Which of the following is a way to challenge discriminatory practice?

A Bullying

B Complaints procedure

C Gender reassignment

D Reasonable adjustments

[1]

Question 11

An optician is being bullied at work. Which of the following should they refer to?

- A
- B
- C
- D

[1]

Question 12

A day centre provides activities that are just for males, and different activities for females.

What is this an example of?

- A
- B
- C
- D

[1]

Question 13

A nursery employs staff from a wide age range.
What does this show that the nursery values?

- A
- B
- C
- D

[1]

Question 14

A care worker believes they are being discriminated against at work. Which organisation should they contact?

- A
- B
- C
- D

[1]

Question 15

A nursery nurse works in partnership with parents, guardians and families. What is being applied?

A Childcare values of care.

B Guidelines on how conditions should be treated.

C Mandatory signs.

D Standard precautions.

[1]

Question 16

Which of the following is a way of encouraging children's learning and development?

A Holding celebrations for Easter and Christmas each year.

B Offering a wide range of activities and toys to all children.

C Staff only allowing each child to play with one toy.

D Staff spending exactly the same amount of time with each child.

[1]

Question 17

Which of the following is part of the role of the Equality and Human Rights Commission?

- A
- B
- C
- D

[1]

Question 18

What is the purpose of Standard 5 of the Care Certificate?

- A
- B
- C
- D

[1]

Question 19

Which of the following is an example of individual rights?

- A Cultural differences.
- B Protection from harm and abuse.
- C Provision of pay secrecy clauses.
- D Value for money.

[1]

Question 20

Which of the following is legislation that supports an individual's rights?

- A Equality and Human Rights Commission
- B Mental Capacity Act
- C National Institute for Health and Care Excellence
- D The Care Certificate

[1]

Question 21

A patient has unexplained burns and bruises.

What type of abuse are they **most likely** to have suffered?

- A
- B
- C
- D

[1]

Question 22

When is a sexual act an indicator of sexual abuse?

- A
- B
- C
- D

[1]

Question 23

Which service does The Care Quality Commission inspect?

- A
- B
- C
- D

[1]

Question 24

Treating people unfairly based on their age is an example of which of the following?

- A
- B
- C
- D

[1]

Question 25

Becoming withdrawn may be an indicator of which of the following?

- A Abuse
- B Active listening
- C Cheerfulness
- D Empathy

[1]

Question 26

What should a care worker do when responding to a disclosure of abuse?

- A Be patronising
- B Look for hazards
- C Offer legal advice
- D Reassure the individual

[1]

Question 27

Being tired may be a sign of which of the following?

A Biohazard

B Electrocutation

C Malnourishment

D Tailgating

[1]

Question 28

Which of the following makes an individual most at risk of abuse?

A Attending a primary school

B Being a vulnerable adult

C Training to be a dentist

D Working in a care home

[1]

Question 29

Which of the following is a major cause of chronic pulmonary disorder?

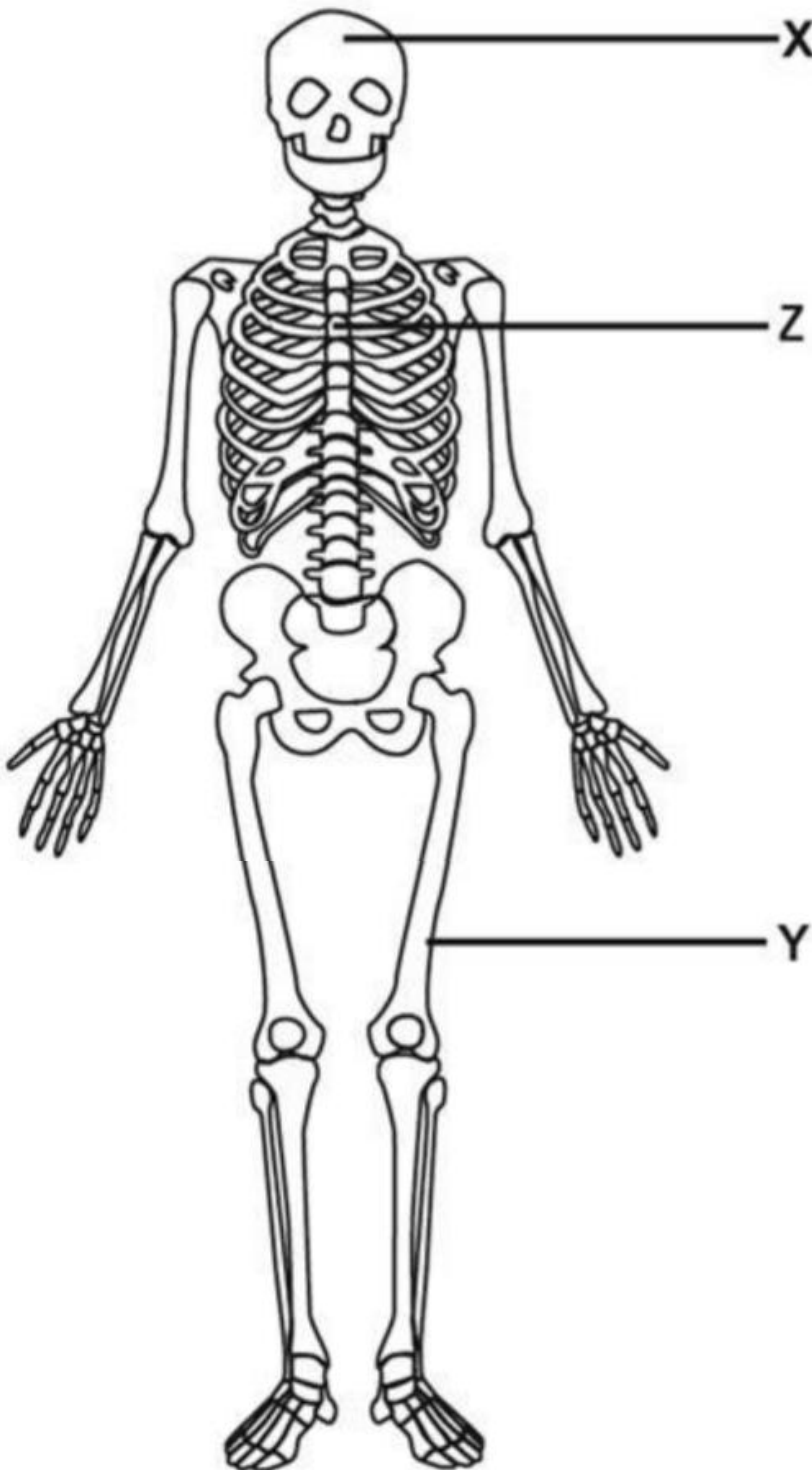
- A Alcohol
- B Diet
- C Hepatitis
- D Smoking

[1]

Question 30

Diagram 30.1: The diagram below shows the skeleton.

What is part X on Diagram 30.1?



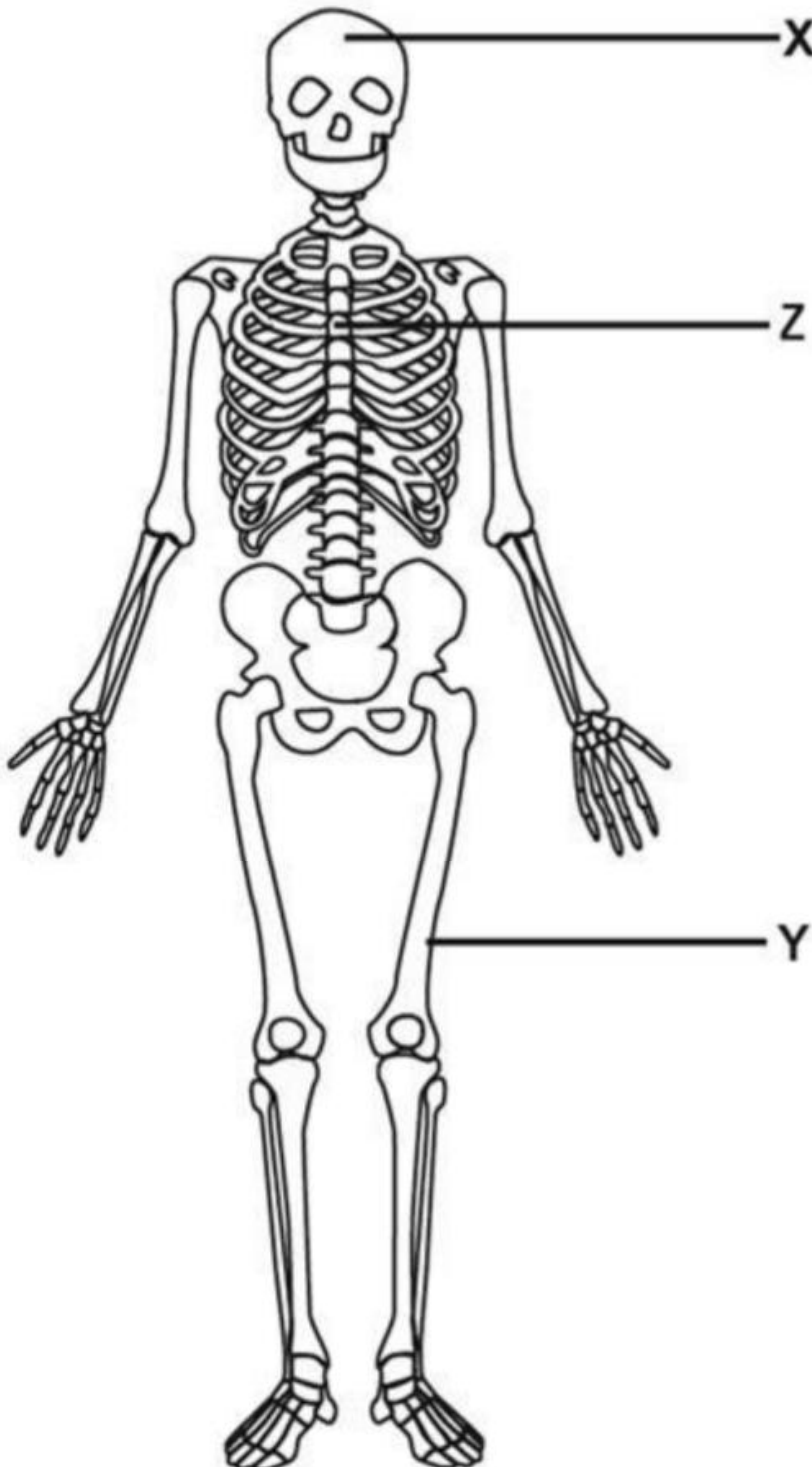
- A
- B
- C
- D

[1]

Question 31

Diagram 30.1: The diagram below shows the skeleton.

What is part Y on Diagram 30.1?



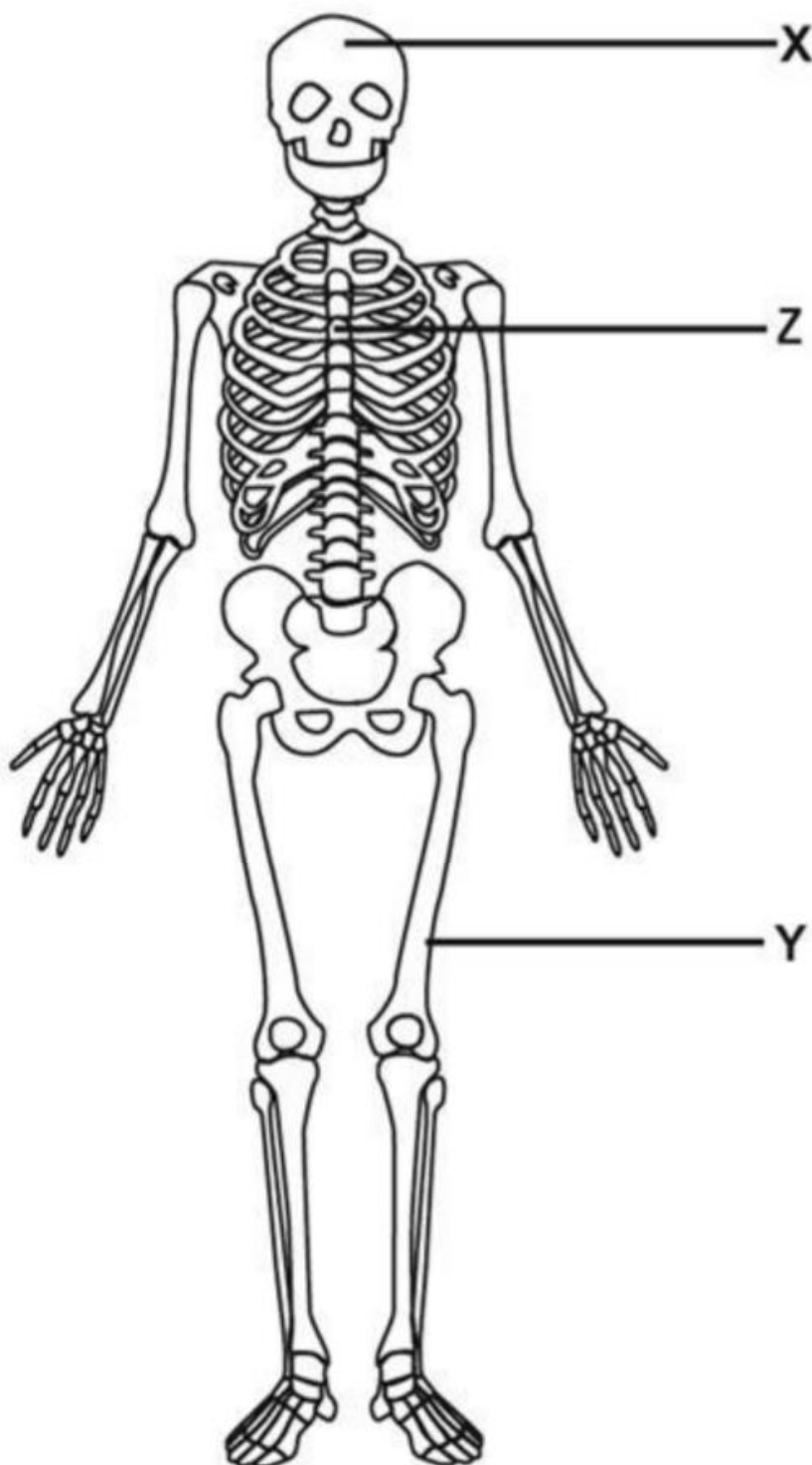
- A
- B
- C
- D

[1]

Question 32

Diagram 30.1: The diagram below shows the skeleton.

What is part **Z** on Diagram 30.1?



- A
- B
- C
- D

[1]

Question 33

Which body system is the uterus part of?

A Cardiovascular

B Renal

C Reproductive

D Respiratory

[1]

Question 34

Being obese is a major cause of which type of diabetes?

A Type 1

B Type 2

C Type 3

D Type 4

[1]

Question 35

Which of the following is an **environmental** barrier to communication?

- A
- B
- C
- D

[1]

Question 36

Patience is an example of which of the following?

- A
- B
- C
- D

[1]

Question 37

What is a health care worker doing if they move to a quiet room to speak with a patient?

A Adapting the environment.

B Adopting positive body language.

C Using an advocate.

D Using appropriate vocabulary.

[1]

Question 38

Which of the following is a type of question used during verbal communication?

A Equal

B High

C Low

D Open

[1]

Question 39

Which of the following conditions is **most** likely to lead to communication difficulties?

- A
- B
- C
- D

[1]

Question 40

Which of the following is an example of written communication used in a childcare setting such as a nursery or playgroup?

- A
- B
- C
- D

[1]

Copyright information

Any reference to existing companies or organisations is entirely coincidental and is not intended as a depiction of those companies or organisations.

Supporting you

Review of results

If any of your students' results are not as expected, you may wish to consider one of our review of results services. For full information about the options available visit the [OCR website](#).

Supporting you through 2021-2022

Our priority is supporting you and your students this spring and to support you as you prepare for summer 2022. We'll update our [website information](#) regularly with resources, guidance and key information.

Take a look at our support for:

- [Teachers](#)
- [Students](#)
- [Exams officers](#)

Keep up-to-date

We are sending a weekly roundup to tell you about important updates. You can also sign up for your subject specific updates. If you haven't already, [sign up here](#).

OCR Professional Development

Attend one of our popular CPD courses to hear directly from a senior assessor or drop in to a Q&A session. All our courses for the academic year 2021-2022 are being delivered live via an online platform, so you can attend from any location.

Please find details for all our courses on the relevant subject page on our [website](#) or visit [OCR professional development](#).

Signed up for Exambuilder?

ExamBuilder is the question builder platform for a range of our GCSE, A Level, Cambridge Nationals, Cambridge Technicals and Functional Skills qualifications. See the full list of available qualifications in the [sign up form](#).

ExamBuilder is **free for all OCR centres** with an Interchange account and gives you unlimited users per centre. We need an [Interchange](#) username to validate the identity of your centre's first user account for ExamBuilder.

If you do not have an Interchange account please contact your centre administrator (usually the Exams Officer) to request a username, or nominate an existing Interchange user in your department.

Supporting you

Active Results

Review students' exam performance with our free online results analysis tool.

For the spring 2022 series, results analysis is available for Cambridge Nationals (moderated units) only.

It allows you to:

- review and run analysis reports on exam performance
- analyse results at question and/or topic level
- compare your centre with OCR national averages
- identify trends across the centre
- facilitate effective planning and delivery of courses
- identify areas of the curriculum where students excel or struggle
- help pinpoint strengths and weaknesses of students and teaching departments.

Find out more at ocr.org.uk/activeresults.

Need to get in touch?

If you ever have any questions about OCR qualifications or services (including administration, logistics and teaching) please feel free to get in touch with our customer support centre.

Call us on
01223 553998

Alternatively, you can email us on
support@ocr.org.uk

For more information visit

 **ocr.org.uk/qualifications/resource-finder**

 **ocr.org.uk**

 **/ocrexams**

 **/ocrexams**

 **/company/ocr**

 **/ocrexams**

We really value your feedback

Click to send us an autogenerated email about this resource. Add comments if you want to. Let us know how we can improve this resource or what else you need. Your email address will not be used or shared for any marketing purposes.



Please note – web links are correct at date of publication but other websites may change over time. If you have any problems with a link you may want to navigate to that organisation’s website for a direct search.



OCR is part of Cambridge University Press & Assessment, a department of the University of Cambridge.

For staff training purposes and as part of our quality assurance programme your call may be recorded or monitored. © OCR 2022 Oxford Cambridge and RSA Examinations is a Company Limited by Guarantee. Registered in England. Registered office The Triangle Building, Shaftesbury Road, Cambridge, CB2 8EA. Registered company number 3484466. OCR is an exempt charity.

OCR operates academic and vocational qualifications regulated by Ofqual, Qualifications Wales and CCEA as listed in their qualifications registers including A Levels, GCSEs, Cambridge Technicals and Cambridge Nationals.

OCR provides resources to help you deliver our qualifications. These resources do not represent any particular teaching method we expect you to use. We update our resources regularly and aim to make sure content is accurate but please check the OCR website so that you have the most up to date version. OCR cannot be held responsible for any errors or omissions in these resources.

Though we make every effort to check our resources, there may be contradictions between published support and the specification, so it is important that you always use information in the latest specification. We indicate any specification changes within the document itself, change the version number and provide a summary of the changes. If you do notice a discrepancy between the specification and a resource, please [contact us](#).

You can copy and distribute this resource freely if you keep the OCR logo and this small print intact and you acknowledge OCR as the originator of the resource.

OCR acknowledges the use of the following content: N/A

Whether you already offer OCR qualifications, are new to OCR or are thinking about switching, you can request more information using our [Expression of Interest form](#).

Please [get in touch](#) if you want to discuss the accessibility of resources we offer to support you in delivering our qualifications.