

CAMBRIDGE TECHNICALS LEVEL 2 (2016)

Examiners' report

HEALTH AND SOCIAL CARE



05890, 05880, 05881

Unit 1 January 2020 series

Version 1

Contents

- Introduction 4
- Unit 1 series overview 5
 - General comments on the paper..... 5
 - Learning outcome 1: questions 1 - 8 5
 - Learning outcome 2: questions 9 - 14 5
 - Learning outcome 3: questions 15 - 20 5
 - Learning outcome 4: questions 21 - 28 5
 - Learning outcome 5: questions 29 - 34 5
 - Learning outcome 6: questions 35 - 40 5
- Appendix 1 Questions 6
 - Question 1 6
 - Question 2 6
 - Question 3 7
 - Question 4 7
 - Question 5 8
 - Question 6 8
 - Question 7 9
 - Question 8 9
 - Question 9 10
 - Question 10 10
 - Question 11 11
 - Question 12 11
 - Question 13 12
 - Question 14 12
 - Question 15 13
 - Question 16 13
 - Question 17 14
 - Question 18 14
 - Question 19 15
 - Question 20 15
 - Question 21 16
 - Question 22 16
 - Question 23 17
 - Question 24 17
 - Question 25 18

Question 2618

Question 2719

Question 2819

Question 2920

Question 3020

Question 3121

Question 3222

Question 3323

Question 3424

Question 3525

Question 3625

Question 3726

Question 3826

Question 3927

Question 4027

Copyright27



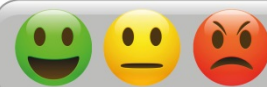
Would you prefer a Word version?

Did you know that you can save this pdf as a Word file using Acrobat Professional?

Simply click on **File > Export to** and select **Microsoft Word**

(If you have opened this PDF in your browser you will need to save it first. Simply right click anywhere on the page and select **Save as...** to save the PDF. Then open the PDF in Acrobat Professional.)

If you do not have access to Acrobat Professional there are a number of **free** applications available that will also convert PDF to Word (search for *pdf to word converter*).



We value your feedback

We'd like to know your view on the resources we produce. By clicking on the icon above you will help us to ensure that our resources work for you.

Introduction

Our examiners' reports are produced to offer constructive feedback on candidates' performance in the examinations. They provide useful guidance for future candidates. The reports will include a general commentary on candidates' performance, identify technical aspects examined in the questions and highlight good performance and where performance could be improved. The reports will also explain aspects which caused difficulty and why the difficulties arose, whether through a lack of knowledge, poor examination technique, or any other identifiable and explainable reason.

Where overall performance on a question/question part was considered good, with no particular areas to highlight, these questions have not been included in the report.

You can now find the results awarded in 2018/19 for some Cambridge Technical subject areas.

As a centre approved to offer our Cambridge Technicals qualifications, we wanted to let you know we have now published the [results awarded](#) for 2018/19 Level 2 and 3 Cambridge Technicals (2016 suite). This information is helpful in allowing you to compare your centre achievements alongside national outcomes.

To browse to the document, log in to [Interchange](#), click on 'Resources and materials>Past papers and mark schemes' in the left-hand menu and select 'Cambridge Technicals (2016) Results Awarded 2018/2019' from the drop-down list.

Unit 1 series overview

General comments on the paper

This was the fifth series of assessment for this unit. The unit contains a large breadth of knowledge and, as is to be expected, candidates performed better on some Learning Objectives (LOs) than others.

Based on the statistical data for all the test items, candidates on average scored best on LO4, closely followed by LO5, then LO6, LO1 and LO2. Candidates performed least well on LO3, with the lowest average mean mark of 0.47.

Learning outcome 1: questions 1 - 8

LO1 requires candidates to know the principles of maintaining health, safety and security and to know basic emergency procedures. Candidates performed relatively well on this LO. Most candidates correctly answered Questions 1 and 7. Questions 2 and 3 proved to be the most challenging for this LO.

Learning outcome 2: questions 9 - 14

LO2 covers the principles of equality and diversity in health, social care and childcare environments. Performance was good on this LO. Most candidates answered Question 12 correctly, while Question 9 was the least-well answered for this LO.

Learning outcome 3: questions 15 - 20

LO3 covers the principles of individual rights and the key features of a person centred approach. Performance was relatively weak on this LO this series. Most candidates answered Question 20 correctly. Questions 16 and 19 in particular were poorly answered.

Learning outcome 4: questions 21 - 28

This LO4 requires candidates to know key facts about safeguarding. Of the six LOs assessed in this unit, performance on LO4 was the highest. Nearly all candidates answered Questions 22, 24, 26 and 28 correctly. Candidates performed less well on Question 27.

Learning outcome 5: questions 29 - 34

LO5 covers anatomy and physiology and performance was good this series. Candidates did particularly well on Questions 32, 33 and 34. Question 29 proved challenging for a number of candidates.

Learning outcome 6: questions 35 - 40

This LO requires candidates to know the principles for communicating effectively. Performance was relatively good on this LO. Question 37 was relatively well answered. Performance was poor on Question 36.

Appendix 1 Questions

Question 1

Which type of setting is a G.P. surgery?

- A adult care
- B child care
- C health care
- D social care

[1]

Question 2

Which of the following is hazardous waste?

- A cleaning products
- B electrical items
- C hot drinks
- D used dressings

[1]

Question 3

Which of the following is a potential hazard?

A food planning

B food poisoning

C food practice

D food preparation

[1]

Question 4

Which of the following is a risk in a care setting?

A soiled bed linen

B electrocution

C hot food

D electrical items

[1]

Question 5

Which statement describes the instructions issued by the Health and Safety Executive?

- A they must be advised by practitioners
- B they must be carried out by law
- C they must be reviewed by senior staff
- D they must be challenged by agreement

[1]

Question 6

What is the name of the Regulations for food preparation?

- A Food Health (General Food Hygiene) Regulations
- B Food Hygiene (General Food Safety) Regulations
- C Food Contamination (General Food Hygiene) Regulations
- D Food Safety (General Food Hygiene) Regulations

[1]

Question 7

Which of these nursery items is most likely to be cleaned by steam sterilising?

- A bottles
- B changing mat
- C soft furnishings
- D soiled linen

[1]

Question 8

Which of the following requires practitioners to check whether two people are needed to complete a task?

- A Control of Substances Hazardous to Health
- B Disclosure and Barring Service
- C Manual Handling Operations Regulations
- D Reporting of Injuries, Diseases and Dangerous Occurrences Regulations

[1]

Question 9

What is family structure?

A an aspect of association

B an aspect of diversity

C a reasonable adjustment

D a protected characteristic

[1]

Question 10

What can be challenged by referring to organisational policies?

A discriminatory duties

B discriminatory practice

C protected duties

D protected practice

[1]

Question 11

A care home gives equal respect to the views of its male and female residents.

What is this an example of?

A valuing choice

B gender stereotyping

C valuing diversity

D gender reassignment

[1]

Question 12

Which comment is an example of stereotyping?

A attitude, not age, affects medical students' progress

B nurses in health care settings are all female

C many infants start nursery before they are one year old

D many older adults continue to work into their seventies

[1]

Question 13

Which type of clauses are now illegal?

A pay consultation clauses

B pay equality clauses

C pay progression clauses

D pay secrecy clauses

[1]

Question 14

What is whistleblowing?

A A way to carry out a risk assessment

B A way to challenge discriminatory practices

C A way to put a care plan into practice

D A way to work in a person-centred way

[1]

Question 15

Which of the following is an example of an individual right in a care environment?

A right to learn

B right to life

C right to listen

D right to livelihood

[1]

Question 16

How many values of care apply when supporting adults in care settings?

A 3 values of care

B 5 values of care

C 6 values of care

D 9 values of care

[1]

Question 17

Which of the following is a childcare value of care?

A ensuring equality of opportunity

B improving equality of opportunity

C maintaining equality of opportunity

D valuing equality of opportunity

[1]

Question 18

Keeping information confidential in a care setting is an example of which of the following?

A a basic need

B equality of opportunity

C an individual right

D a protected characteristic

[1]

Question 19

Which of the following is a role of NICE (National Institute for Health and Care Excellence)?

A to identify individual rights

B to improve survival rates

C to provide data on equality

D to support safeguarding

[1]

Question 20

The Care Certificate Standard 5 is: 'promoting person-centred values'.

Which of the following is a person-centred value?

A reason

B review

C rights

D risks

[1]

Question 21

What do bullying policies in care settings provide guidance on?

- A safeguarding
- B secrecy
- C security
- D self-harm

[1]

Question 22

Which of the following is an example of financial abuse?

- A failing to provide an individual with adequate food
- B ignoring an individual's medical care needs
- C treating an individual unfairly because of their race
- D theft of an individual's money

[1]

Question 23

Which of the following is an outcome of Every Child Matters?

- A
- B
- C
- D

[1]

Question 24

Grabbing an individual is an example of which of the following type of abuse?

- A
- B
- C
- D

[1]

Question 25

What type of crime is an attack against an individual because of their sexuality?

A harmful crime

B hate crime

C health crime

D human rights crime

[1]

Question 26

Which of the following is an example of physical abuse?

A using objects to cause harm

B intimidation

C using an individual's money without their permission

D verbal insults

[1]

Question 27

Which of the following laws includes the Every Child Matters outcome 'be healthy'?

A Children Act

B Equality Act

C Human Rights Act

D Mental Capacity Act

[1]

Question 28

Treating someone unfairly because of their race is an example of which of the following?

A disclosure

B stereotyping

C discrimination

D safeguarding

[1]

Question 29

Which of the following is a cause of COPD (chronic pulmonary disorder)?

A alcohol abuse

B poor diet

C hepatitis C

D workplace pollutants

[1]

Question 30

Cirrhosis is a disease that affects which part of the body?

A bladder

B heart

C liver

D lungs

[1]

Question 31

What is the name of the type of diabetes caused by diet and obesity?

- A type 1
- B type 2
- C type 3
- D type 4

[1]

Question 32

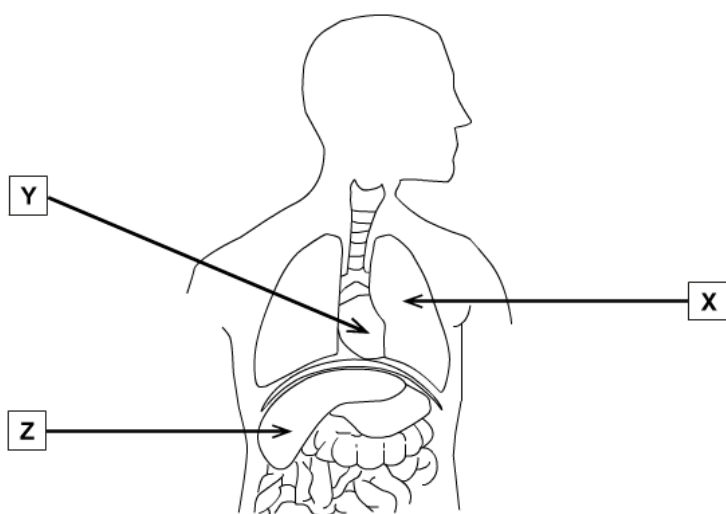


Diagram 32.1: Diagram of the key parts of the body.

What is part X on Diagram 32.1?

- A heart
- B intestines
- C liver
- D lung

[1]

Question 33

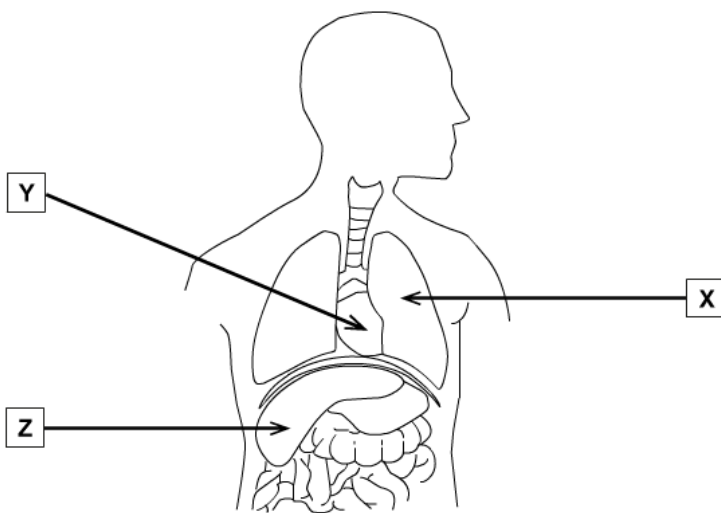


Diagram 32.1: Diagram of the key parts of the body.

What is part Y on Diagram 32.1?

- A
- B
- C
- D

[1]

Question 34

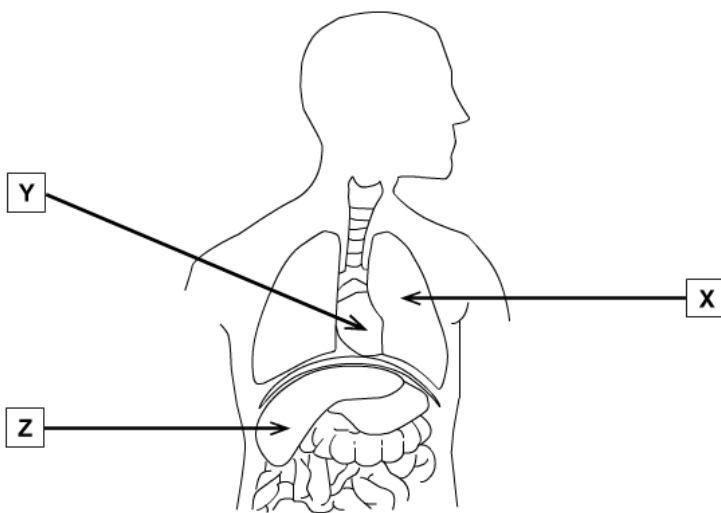


Diagram 32.1: Diagram of the key parts of the body.

What is part Z on Diagram 32.1?

- A heart
- B intestines
- C liver
- D lung

[1]

Question 35

A carer asks an individual to describe their experiences.

What type of question is the carer using?

- A active
- B closed
- C open
- D special

[1]

Question 36

Which of the following is a principle of SOLER?

- A closed posture
- B lean towards
- C sit back
- D stand squarely

[1]

Question 37

Which of the following is a barrier to communication?

A inappropriate body language

B open posture

C use of an advocate

D active listening

[1]

Question 38

Specialist terminology may be a barrier to communication.

Which of the following words best describes this barrier?

A ventilation

B vocabulary

C voluntary

D vulnerable

[1]

Question 39

Which of the following is a method to overcome barriers to communication?

A contacting the NSPCC

B providing a translator

C sending emails

D writing a care plan

[1]

Question 40

Which of the following is a form of written communication?

A assistive technology

B Makaton

C patient records

D sign language

[1]

Copyright

Any reference to existing companies or organisations is entirely coincidental and is not intended as a depiction of those companies or organisations.

Supporting you

For further details of this qualification please visit the subject webpage.

Review of results

If any of your students' results are not as expected, you may wish to consider one of our review of results services. For full information about the options available visit the [OCR website](#). If university places are at stake you may wish to consider priority service 2 reviews of marking which have an earlier deadline to ensure your reviews are processed in time for university applications.

CPD Training

Attend one of our popular CPD courses to hear exam feedback directly from a senior assessor or drop in to an online Q&A session.

Please find details for all our courses on the relevant subject page on our website.

www.ocr.org.uk

OCR Resources: *the small print*

OCR's resources are provided to support the delivery of OCR qualifications, but in no way constitute an endorsed teaching method that is required by OCR. Whilst every effort is made to ensure the accuracy of the content, OCR cannot be held responsible for any errors or omissions within these resources. We update our resources on a regular basis, so please check the OCR website to ensure you have the most up to date version.

This resource may be freely copied and distributed, as long as the OCR logo and this small print remain intact and OCR is acknowledged as the originator of this work.

Our documents are updated over time. Whilst every effort is made to check all documents, there may be contradictions between published support and the specification, therefore please use the information on the latest specification at all times. Where changes are made to specifications these will be indicated within the document, there will be a new version number indicated, and a summary of the changes. If you do notice a discrepancy between the specification and a resource please contact us at: resources.feedback@ocr.org.uk.

Whether you already offer OCR qualifications, are new to OCR, or are considering switching from your current provider/awarding organisation, you can request more information by completing the Expression of Interest form which can be found here: www.ocr.org.uk/expression-of-interest

Please get in touch if you want to discuss the accessibility of resources we offer to support delivery of our qualifications: resources.feedback@ocr.org.uk

Looking for a resource?

There is now a quick and easy search tool to help find **free** resources for your qualification:

www.ocr.org.uk/i-want-to/find-resources/

Need to get in touch?

If you ever have any questions about OCR qualifications or services (including administration, logistics and teaching) please feel free to get in touch with our **Customer Support Centre**.

Vocational qualifications

Telephone 02476 851509

Facsimile 02476 851633

Email vocational.qualifications@ocr.org.uk

www.ocr.org.uk

OCR is part of Cambridge Assessment, a department of the University of Cambridge. *For staff training purposes and as part of our quality assurance programme your call may be recorded or monitored.*

© **OCR 2020** Oxford Cambridge and RSA Examinations is a Company Limited by Guarantee. Registered in England. Registered office The Triangle Building, Shaftesbury Road, Cambridge, CB2 8EA. Registered company number 3484466. OCR is an exempt charity.



Cambridge
Assessment

