



Cambridge International Examinations
Cambridge Pre-U Certificate

www.XtremePapers.com

GEOGRAPHY (PRINCIPAL)

9768/03

Paper 3 Geographical Issues

For Examination from 2016

SPECIMEN INSERT

2 hours 45 minutes

READ THESE INSTRUCTIONS FIRST

This Insert contains all the Figures and Photographs referred to in the Question Paper.

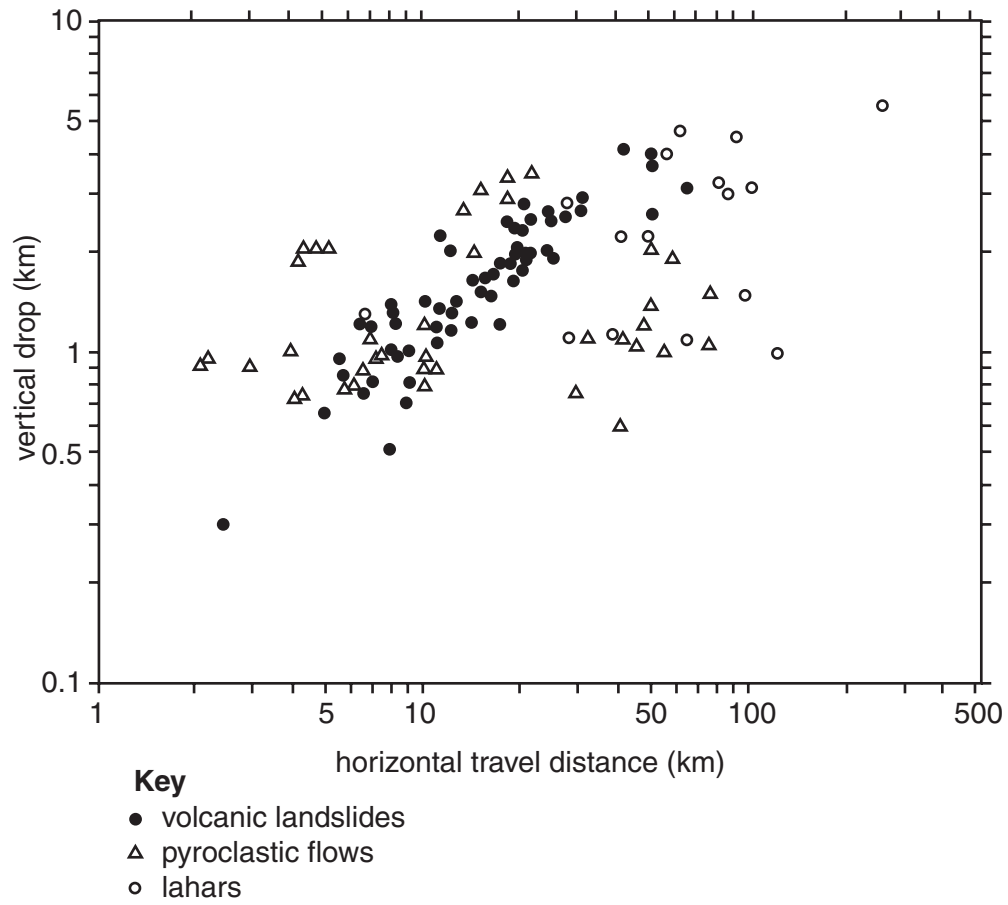
The syllabus is approved for use in England, Wales and Northern Ireland as a Cambridge International Level 3 Pre-U Certificate.

This document consists of **8** printed pages.



Fig. 1 for Question 1

The vertical drop and horizontal travel distance of three volcanic mass movement processes



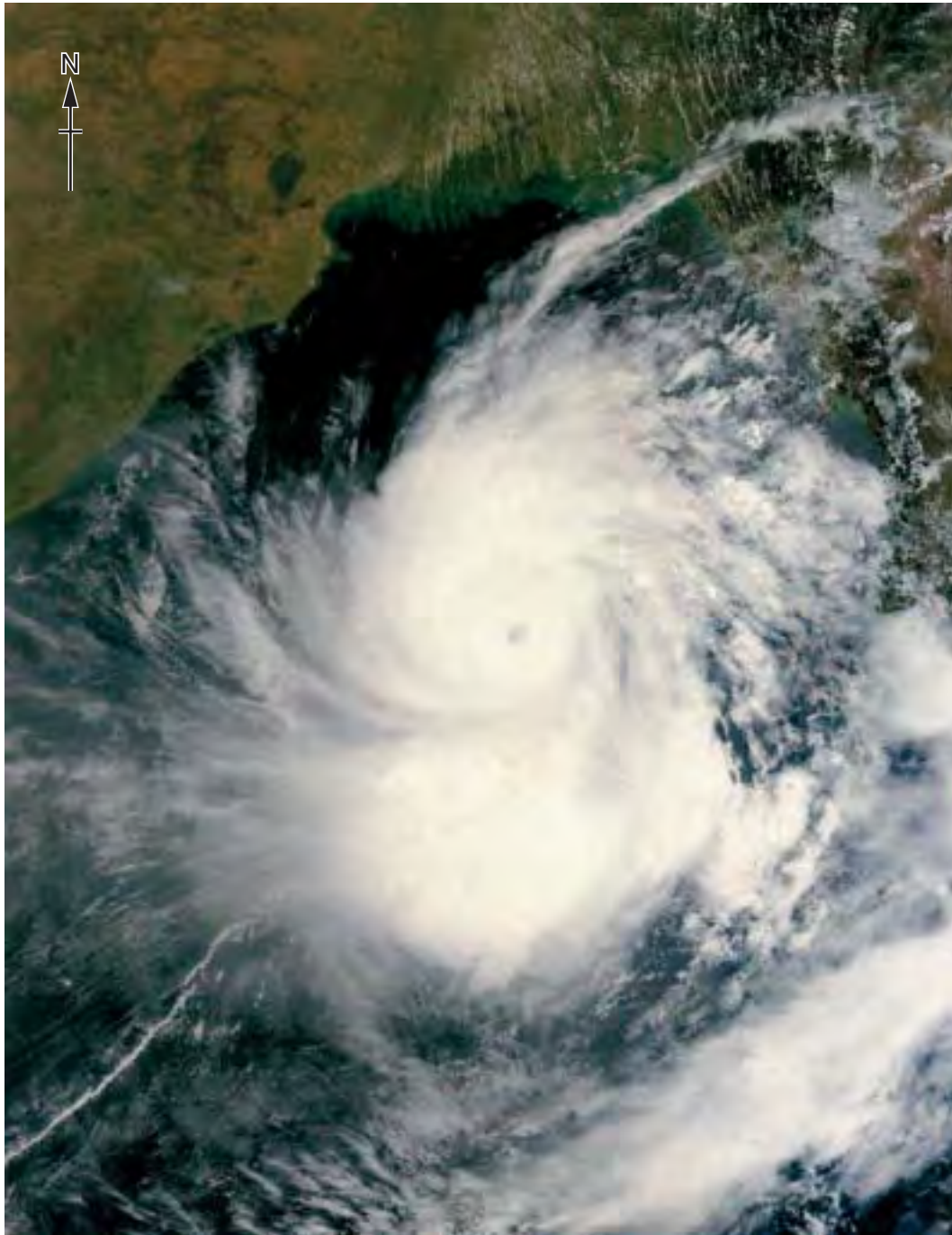
Photograph A for Question 2

Flooding in Myanmar caused by tropical storm Nargis, May 2008



Photograph B for Question 2

Tropical storm Nargis heading towards land



0 100
km

Figs 2A and 2B for Question 3

48 hour rainfall in millimetres over England and Wales

Fig. 2A
24–25 June 2007

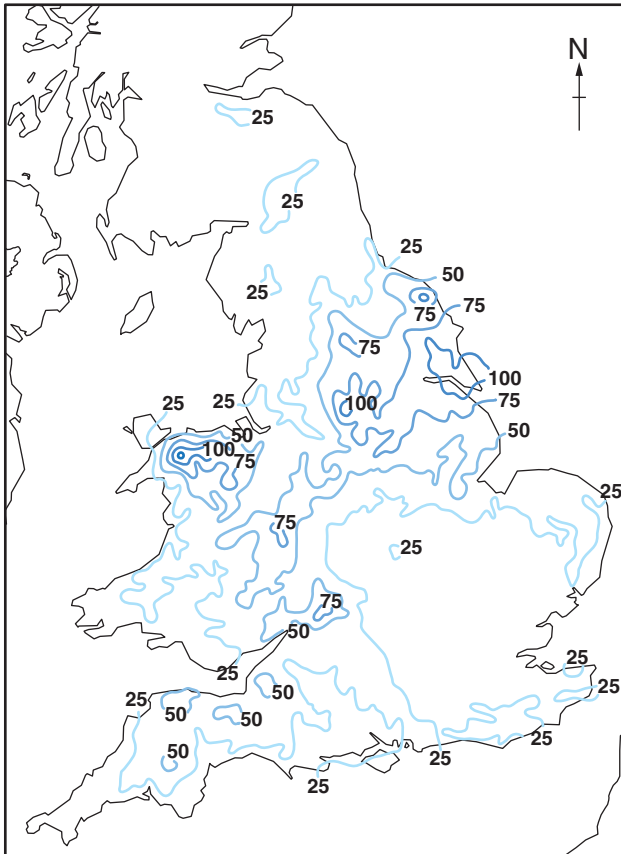
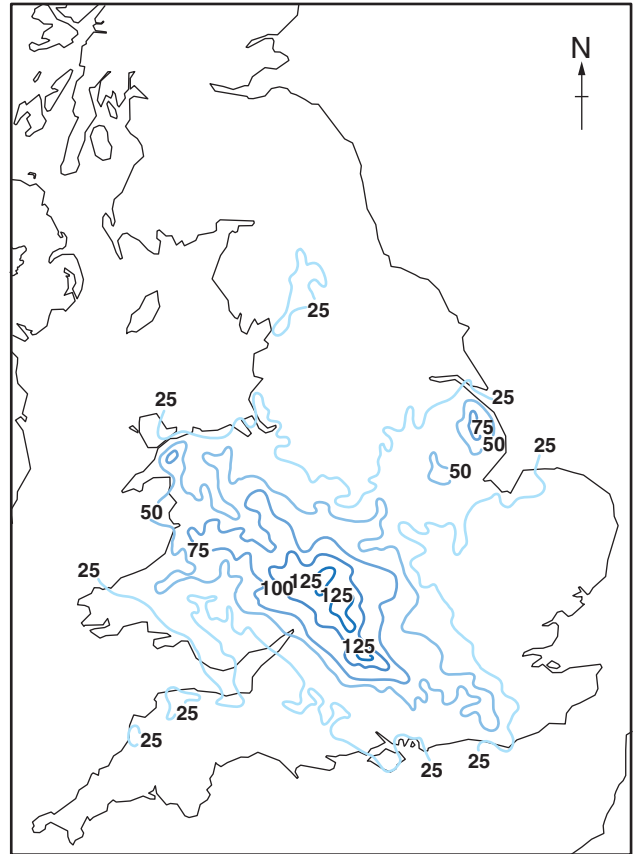


Fig. 2B
19–20 July 2007

**Key**

— 25 — rainfall in millimetres

Fig. 3A for Question 4

Relative incidence of crime in an outer suburb of Birmingham, June 2011

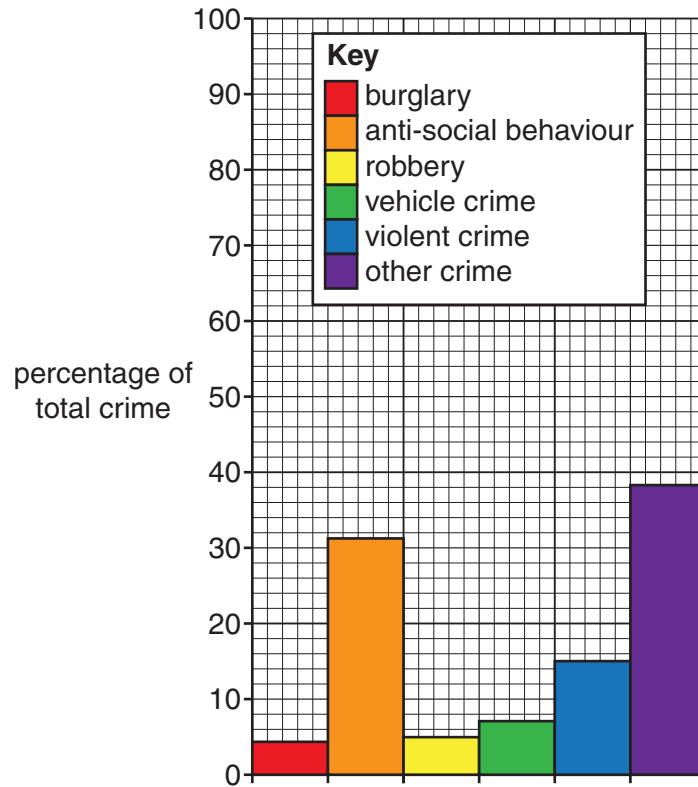


Fig. 3B for Question 4

Relative incidence of crime in the central business and entertainment centre of Birmingham, June 2011

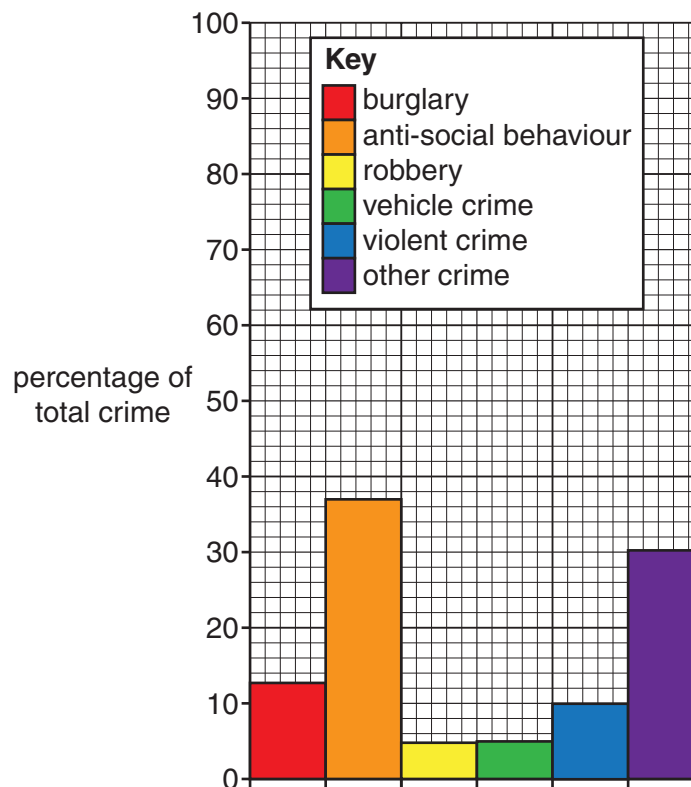


Fig. 4A for Question 5

Infant mortality rate for Africa, 2006

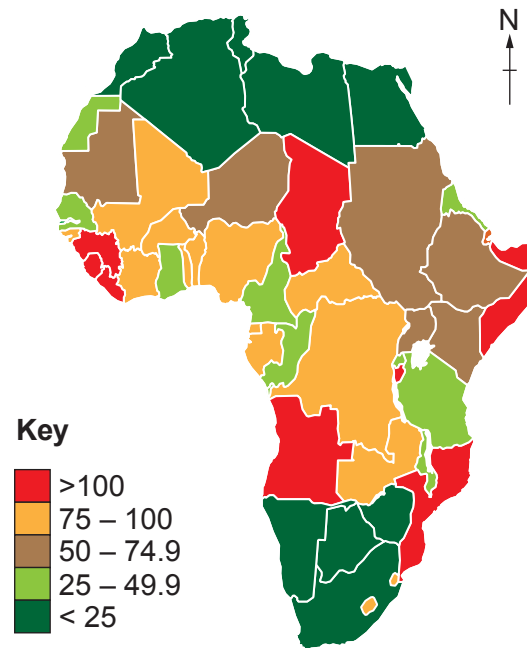


Fig. 4B for Question 5

Malnutrition rates for Africa, 2006

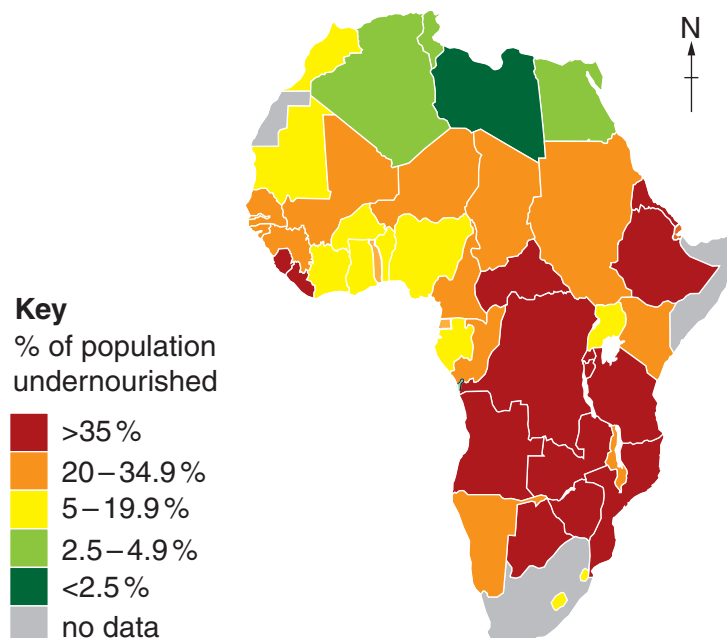
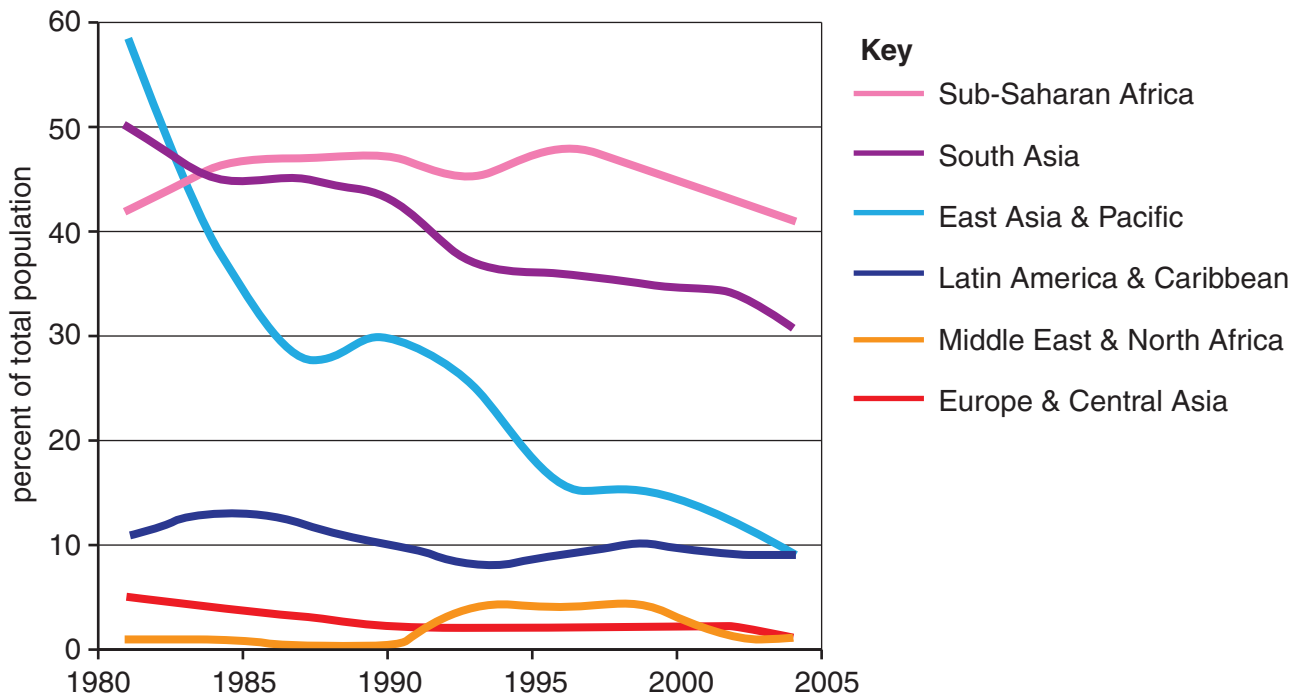


Fig. 5 for Question 6

Percentage of total population living on less than US\$1.00 per day
in selected regions of the world, 1981–2004



Copyright Acknowledgements:

- Question 1 © A J Gerrard; *Mountain Environments: An Examination of the Physical Geography of Mountains*; The MIT Press; 1990.
- Question 2 Photograph A © Ref: BATCTX; Mark Pearson; *Junk boat travels up the Ayeyarwady Delta after Cyclone Nargis struck Myanmar between the 2nd and 3rd of May 2008*; www.alamy.com.
- Question 2 Photograph B © *Tropical Cyclone Nargis (01B) in the Bay of Bengal*; http://rapidfire.sci.gsfc.nasa.gov/gallery/?2008122-0501?Nargis_A2008122.0440.250m.jpg; 2008.
- Question 3 © P Eden; *Great British Weather Disasters*; Bloomsbury Publishing; 2008.
- Question 4 © <http://www.police.co.uk/crime/?g=Birmingham%20B1.%20UK>; 2 August 2013.
- Question 5 © http://en.wikipedia.org/wiki/File:Infant_Mortality_Rate_World_map.png; 2 August 2013.
- Question 5 © http://en.wikipedia.org/wiki/File:Percentage_population_overnourished_world_map.PNG; 2 August 2013.
- Question 6 © http://www.wri.org/files/wri/images/page_21b.preview.png; 2 August 2012.

Permission to reproduce items where third-party owned material protected by copyright is included has been sought and cleared where possible. Every reasonable effort has been made by the publisher (UCLES) to trace copyright holders, but if any items requiring clearance have unwittingly been included, the publisher will be pleased to make amends at the earliest possible opportunity.

Cambridge International Examinations is part of the Cambridge Assessment Group. Cambridge Assessment is the brand name of University of Cambridge Local Examinations Syndicate (UCLES), which is itself a department of the University of Cambridge.