



Cambridge International Examinations
Cambridge Pre-U Certificate

www.XtremePapers.com

GEOGRAPHY (PRINCIPAL)

9768/01

Paper 1 Global Environments

For Examination from 2016

SPECIMEN INSERT

1 hour 30 minutes

READ THESE INSTRUCTIONS FIRST

This Insert contains all Figures, the Photograph and the Table referred to in the Question Paper.

The syllabus is approved for use in England, Wales and Northern Ireland as a Cambridge International Level 3 Pre-U Certificate.

This document consists of **9** printed pages and **1** blank page.



Fig. 1A for Question 1

Changes to the surface area of the Aral Sea

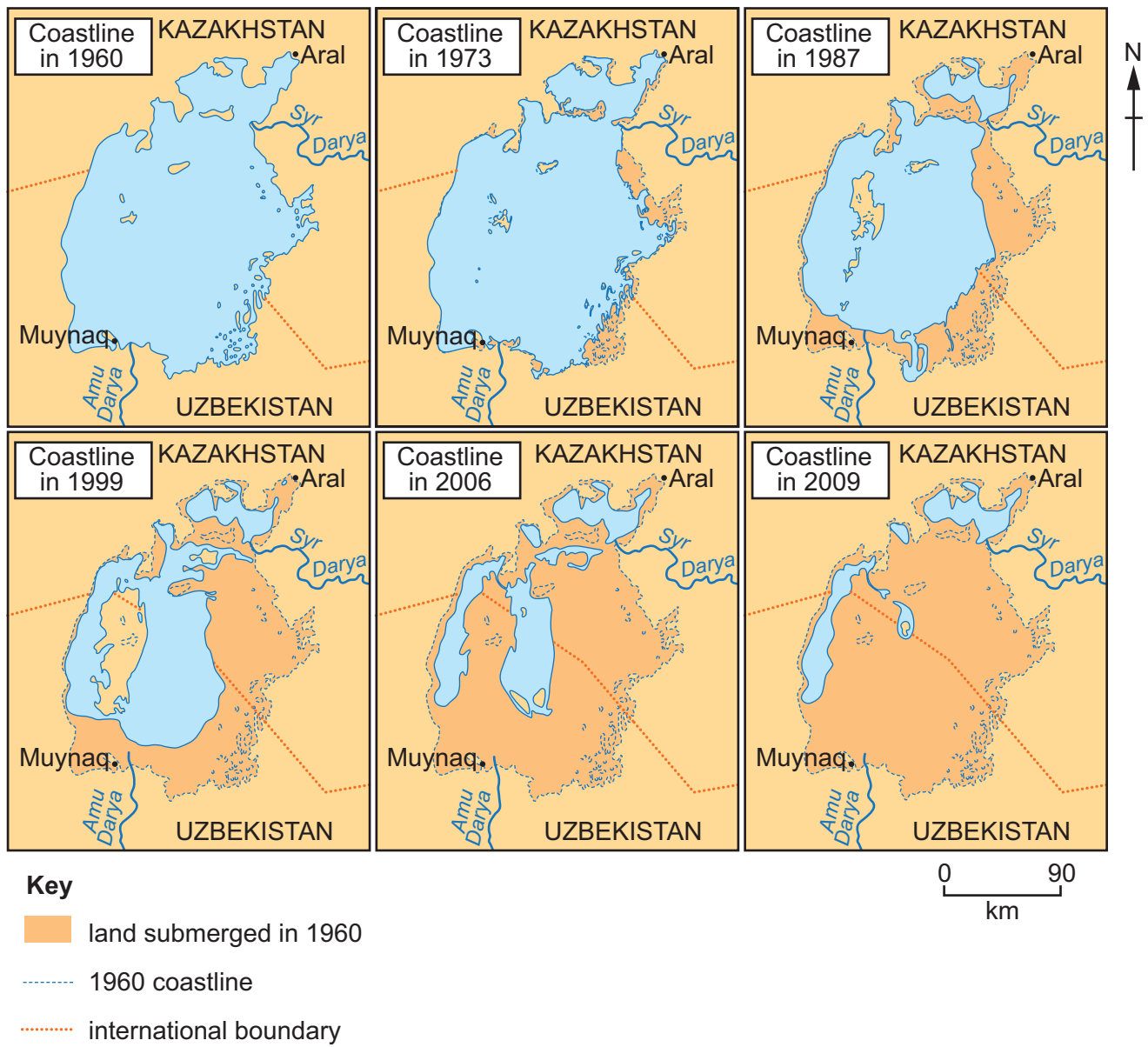
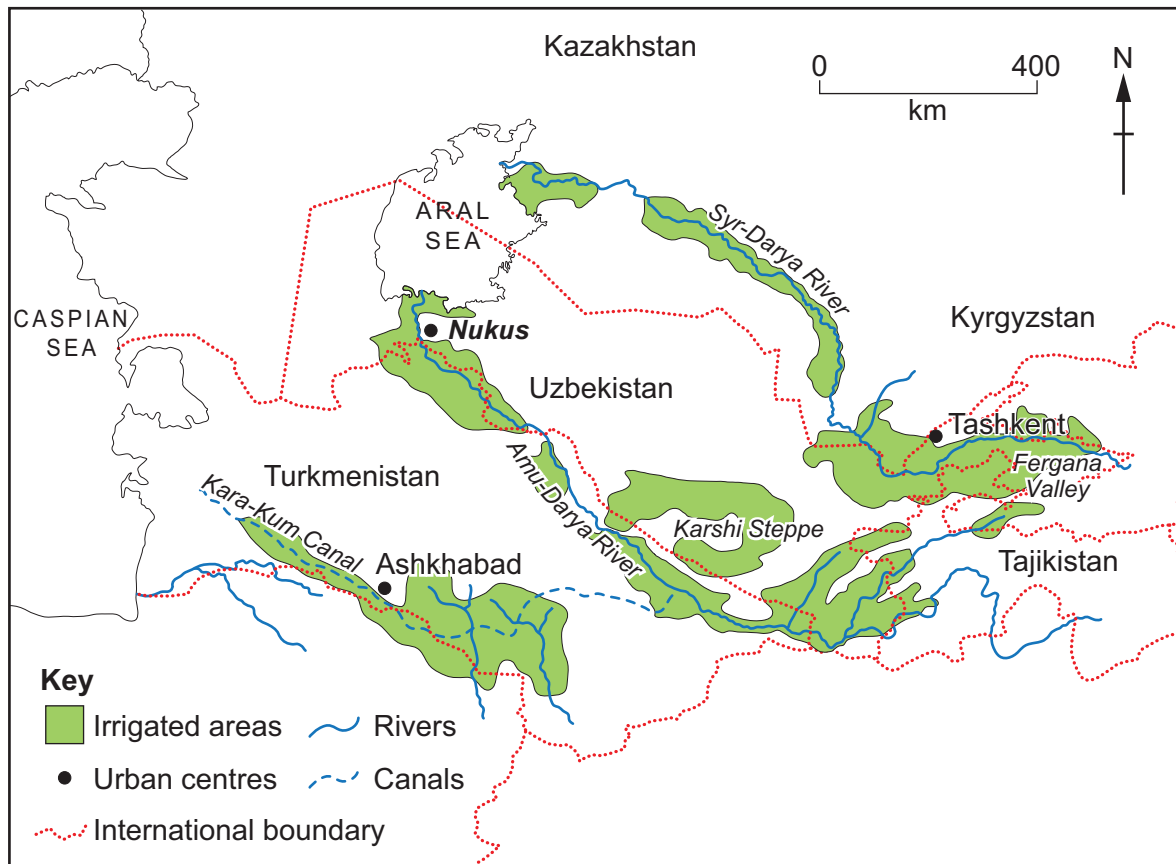


Fig. 1B for Question 1

The area surrounding the Aral Sea



Photograph A for Question 2

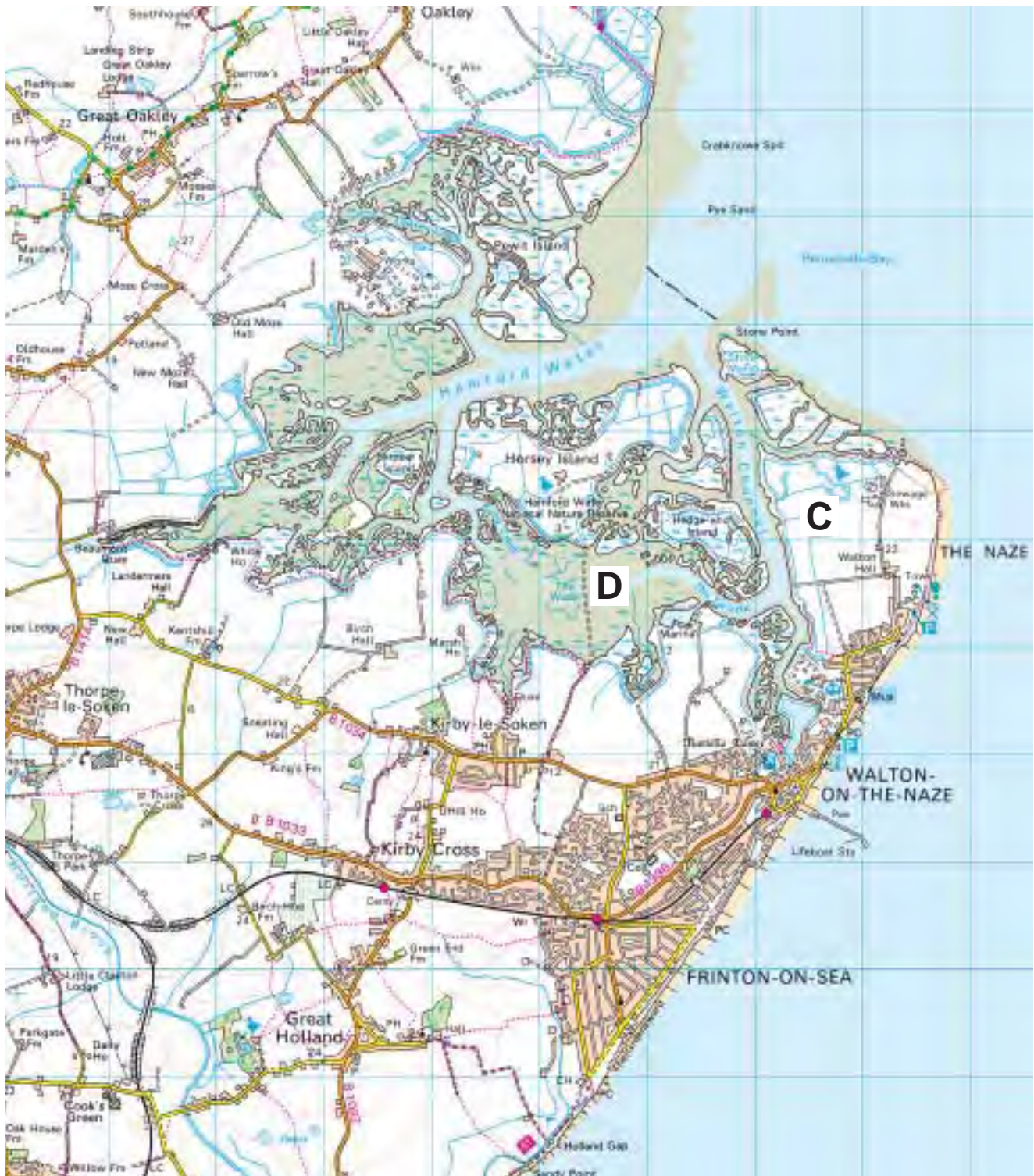
An area of glaciated upland, Snowdonia, North Wales



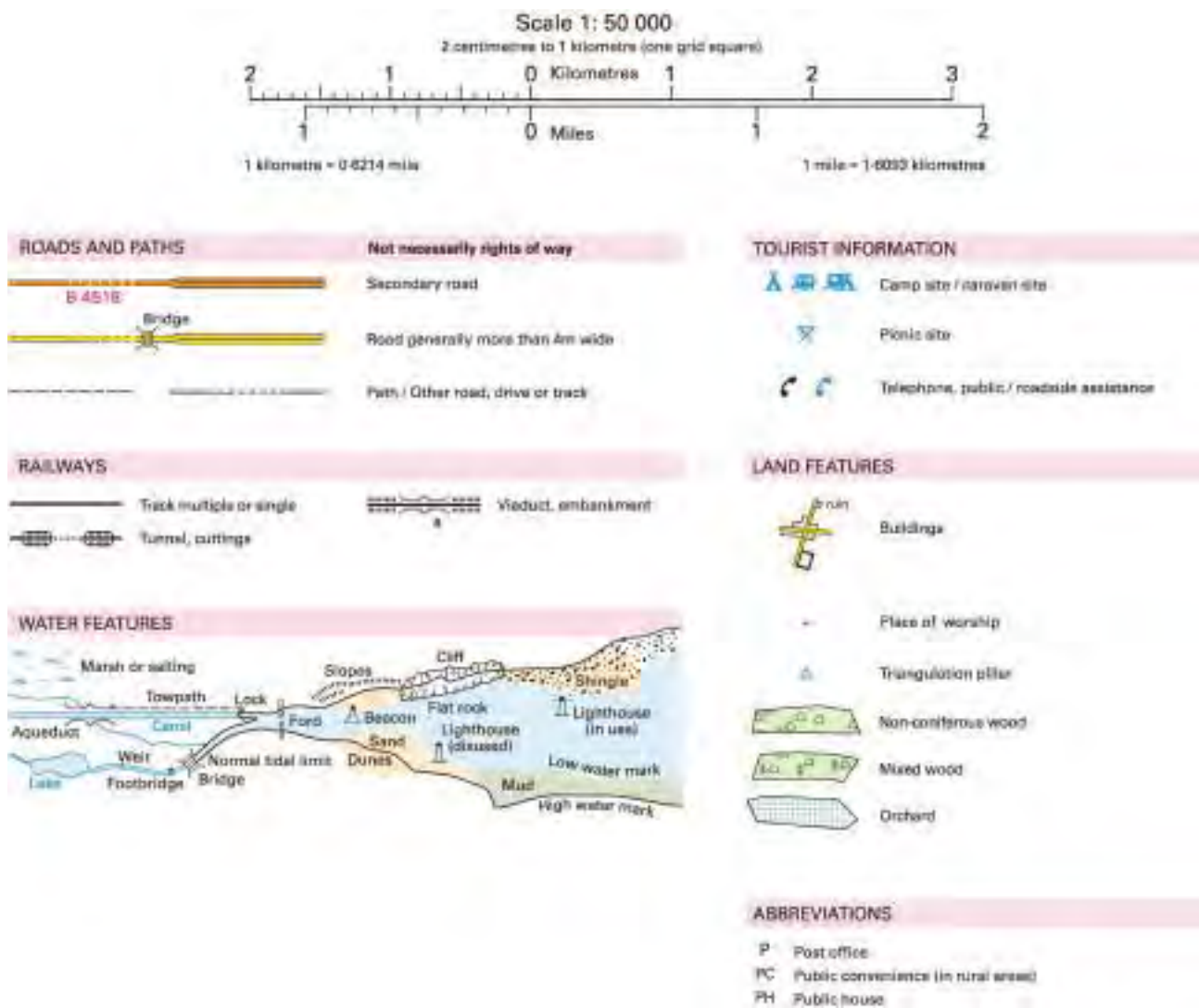
BLANK PAGE

Fig. 2 for Question 3

An area of the Essex coastline, East Anglia, UK



Key for Fig. 2



Figs 3A and 3B for Question 4

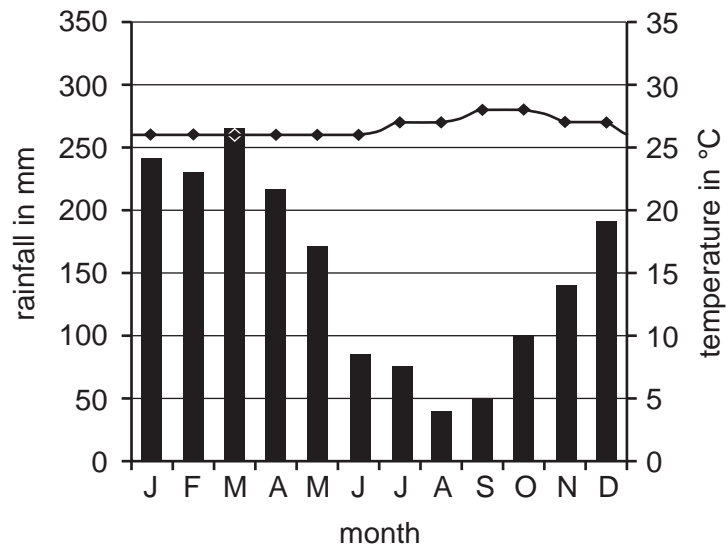
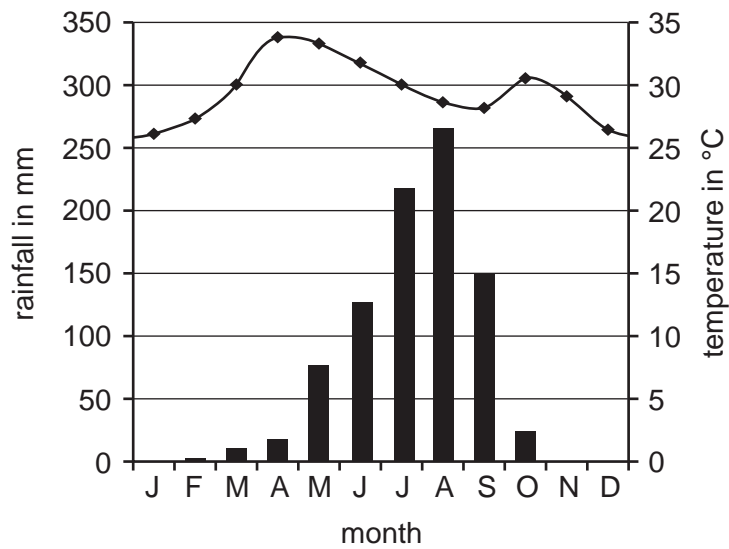
Annual climate Manaus, Brazil (latitude 3°S)**Annual climate Kano, Nigeria (latitude 12°N)**

Fig. 4 and Table 1 for Question 5

An extract from Chapter 1 of the *Grapes of Wrath* by John Steinbeck

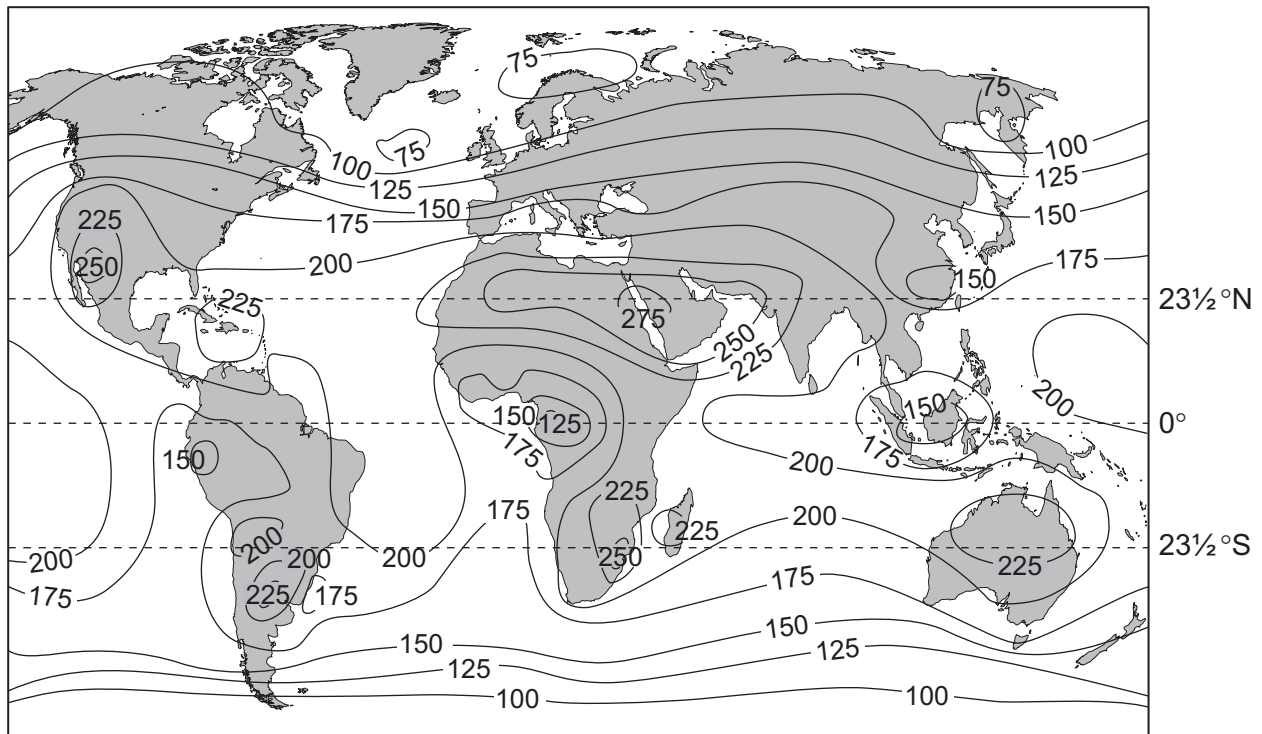
Content removed due to copyright restrictions

Dust storm frequency for the decade 1932 to 1941 in the American Mid-West

Frequency of dust storms with visibility <1.6 km	
1932	14
1933	38
1934	22
1935	40
1936	68
1937	72
1938	61
1939	30
1940	17
1941	17

Fig. 5 for Question 6

The global distribution of average annual solar radiation

**Key**

– 200 – Insolation values as measured at ground level in watts per square metre

Copyright Acknowledgements:

- Question 1 Figure 1a © <http://mappery.com/maps/Aral-Sea-historic-coastline-Map.gif>.
 Question 2 Photograph A © Aerofilms; <http://www.english-heritage.org.uk/professional/archives-and-collections/nmr/aarchives/photographs/aerofilms/>.
 Question 3 Figure 2 © *An area of the Essex coastline, East Anglia, UK*; OS Landranger 169; Eastings 18-29, Northings 18-29; Ordnance Survey.
 Question 5 Figure 4 **Content removed due to copyright restrictions**
 Question 6 Figure 5 © Roger Barry & Richard Chorley; *Atmosphere, weather and climate*; Methuen Publishing; 1987.

Permission to reproduce items where third-party owned material protected by copyright is included has been sought and cleared where possible. Every reasonable effort has been made by the publisher (UCLES) to trace copyright holders, but if any items requiring clearance have unwittingly been included, the publisher will be pleased to make amends at the earliest possible opportunity.

Cambridge International Examinations is part of the Cambridge Assessment Group. Cambridge Assessment is the brand name of University of Cambridge Local Examinations Syndicate (UCLES), which is itself a department of the University of Cambridge.