
GEOGRAPHY

9768/01

Paper 1 Geographical Issues

May/June 2014

INSERT

2 hours 30 minutes

READ THESE INSTRUCTIONS FIRST

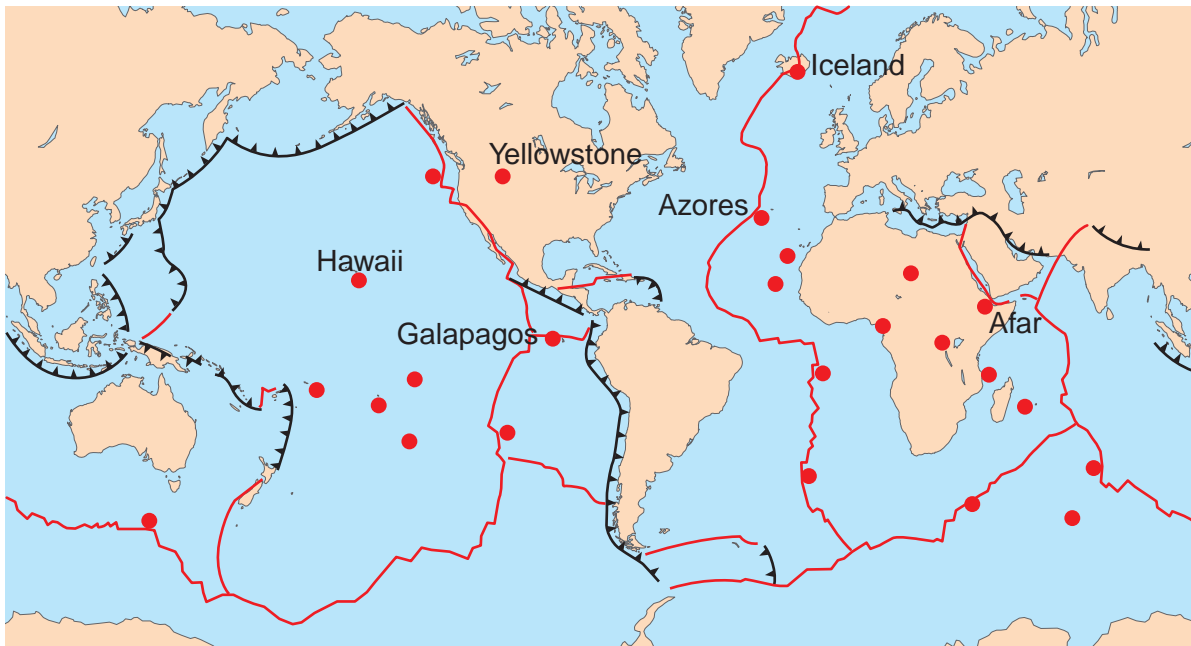
This Insert contains all the Figures referred to in the questions.



This document consists of **7** printed pages and **1** blank page.

Fig. 1 for Question 1

Global distribution of volcanic hot spots, the major tectonic plates and types of plate boundaries.

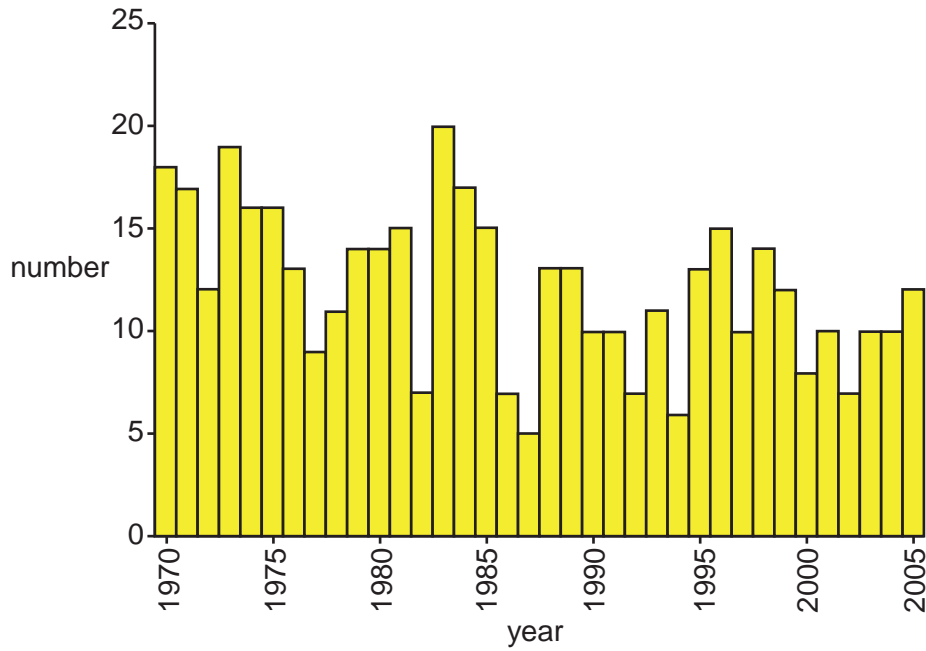


Key

- hot spots
- └ convergent plate boundaries
- ┌ divergent plate boundaries

Fig. 2A and Fig. 2B for Question 2

The frequency of non-severe tropical cyclones in Australia for the period 1970–2005.



The frequency of severe tropical cyclones in Australia for the period 1970–2005.

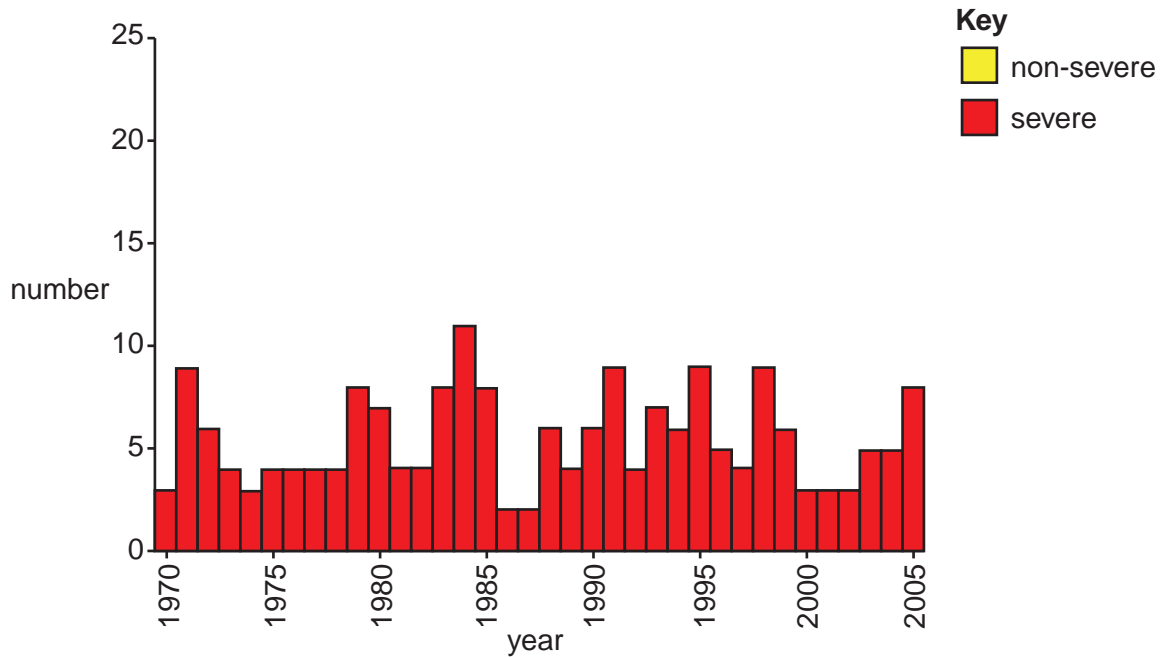
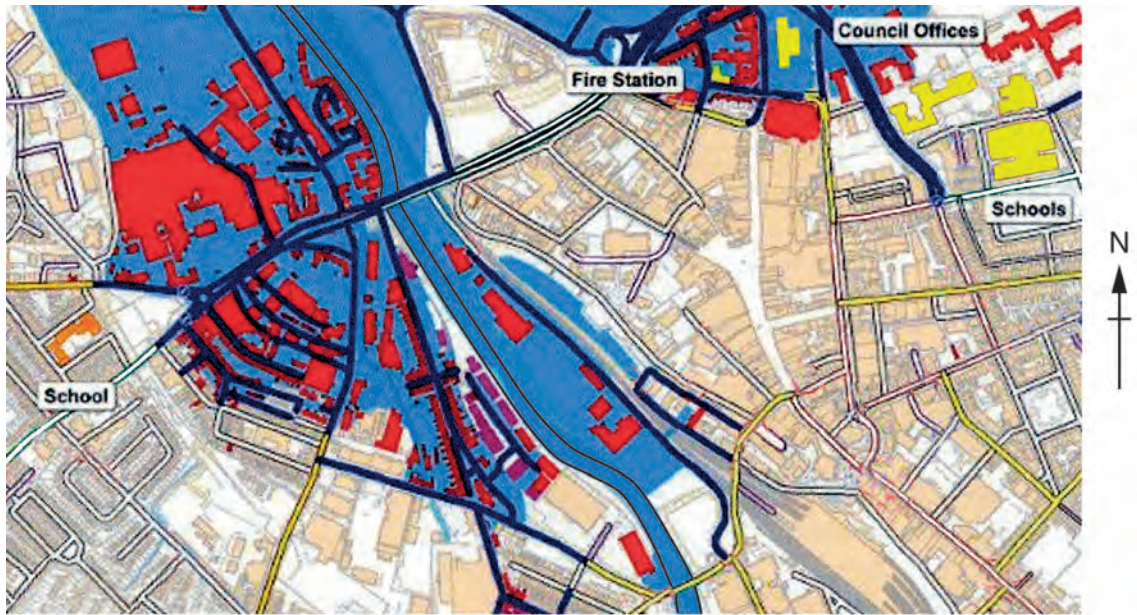


Fig. 3 for Question 3

The extent of flooding at Carlisle, England in January 2005.



Key

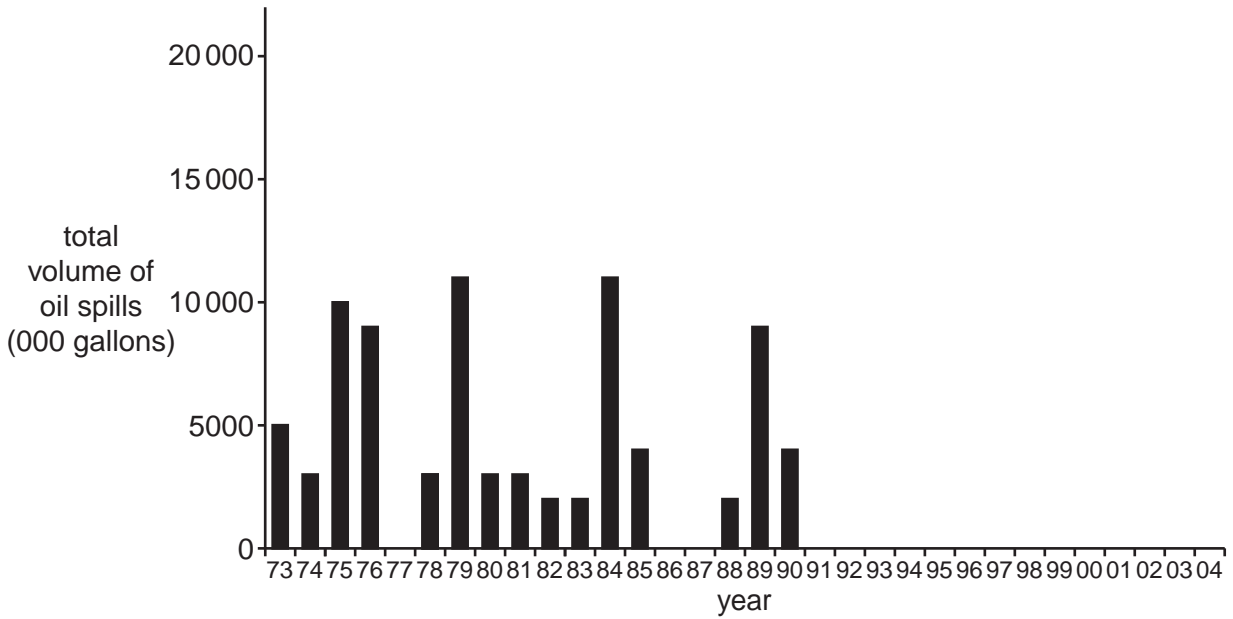
land uses

- flooded buildings
- strategic buildings / roads
- buildings cut off by floods
- actual flooded area
- other/unaffected buildings
- flooded roads
- usual course of river

0 500
m

Fig. 4 for Question 4

Total volume of oil spills by spill size in the USA for the period 1973 to 2004.



Key
 volume of spill
 ■ spills of 1 000 000 gallons and greater
 ■ spills of less than 1 000 000 gallons

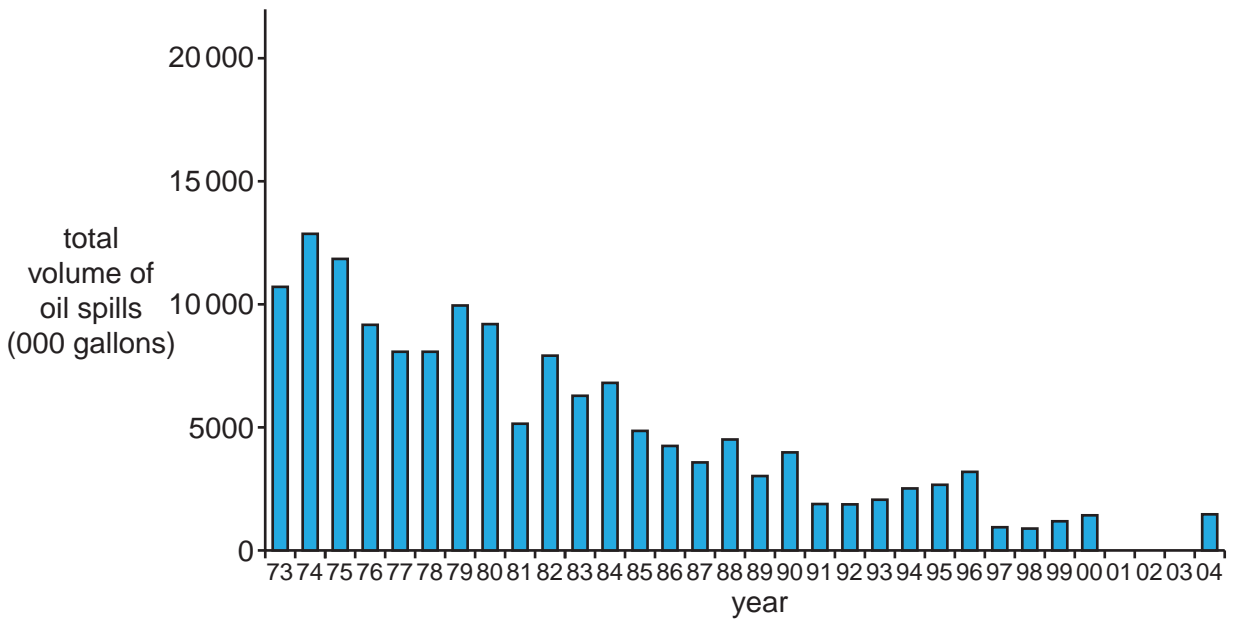


Fig. 5 for Question 5
Global distribution of deaths from vector borne diseases for a year.

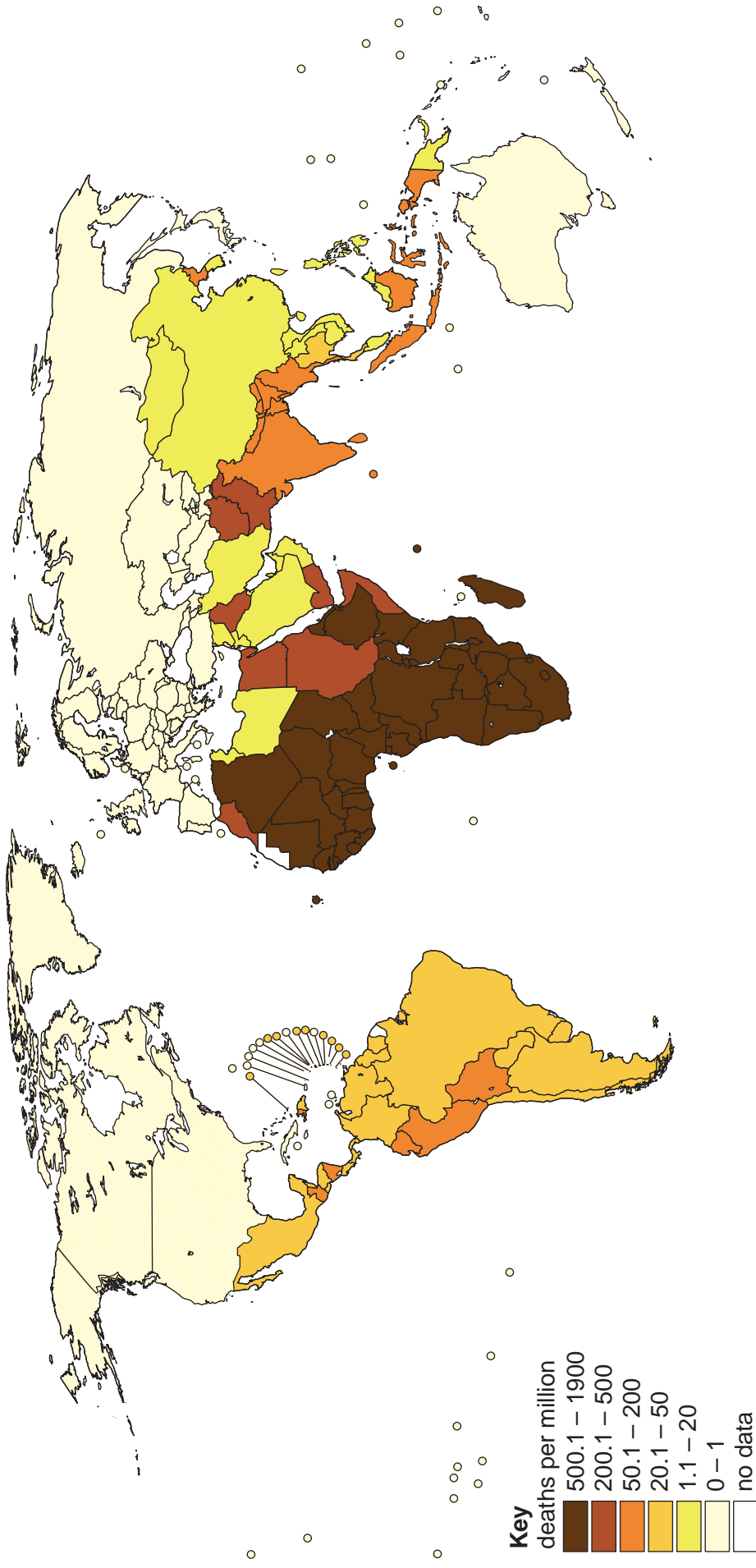
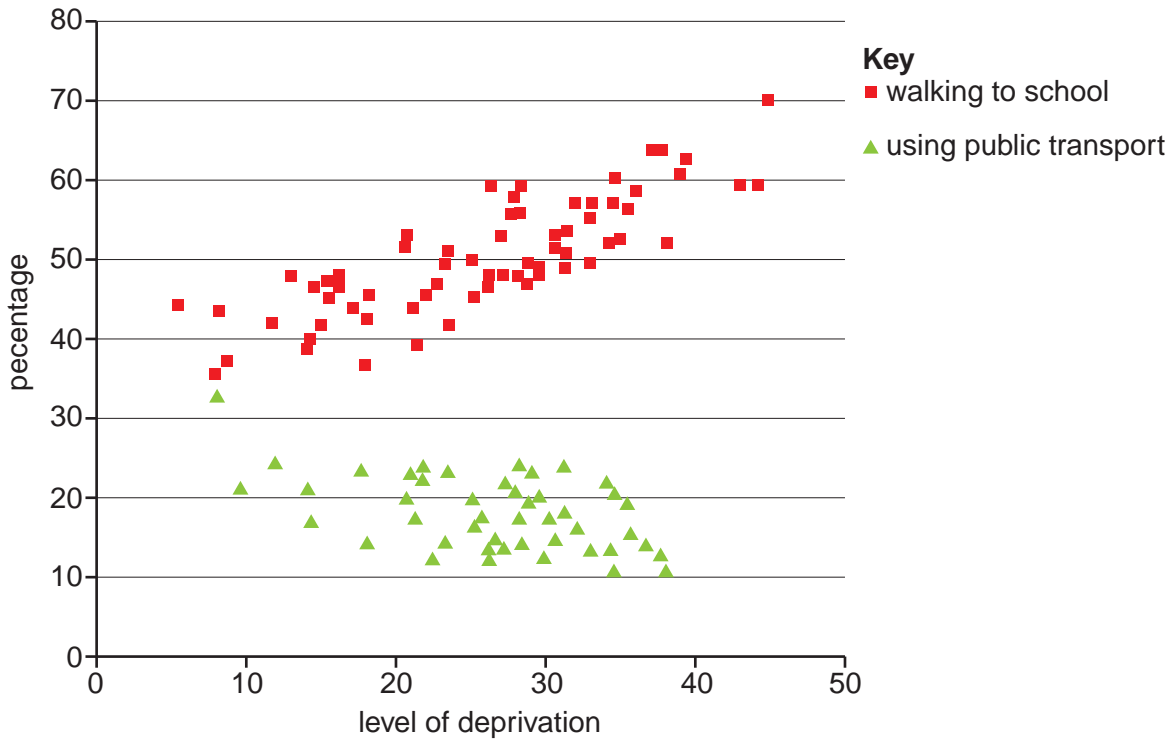


Fig. 6 for Question 6

Relationships between level of deprivation and mode of travel to school.



BLANK PAGE

Copyright Acknowledgements:

Question 1 Fig. 1	© http://serc.carleton.edu/details/images/7761.html
Question 2 Figs 2A & 2B	© http://www.bom.gov.au/cyclone/climatology/trends.shtml
Question 3 Fig. 3	© http://event.conceptglobal.com/accounts/register123/concep/clientaccount/flood_map_alt(1).jpg
Question 4 Fig. 4	© www.safewater.org
Question 5 Fig. 5	© WHO 2005; <i>WHO World Health Report 2004</i> ; http://www.who.int/heli/risks/vectors/en/vbdmap.pdf
Question 6 Fig. 6	© http://www.steerdaviesgleave.com/news-and-insights/Deprivation-as-an-indicator-for-travelling-to-school-trends

Permission to reproduce items where third-party owned material protected by copyright is included has been sought and cleared where possible. Every reasonable effort has been made by the publisher (UCLES) to trace copyright holders, but if any items requiring clearance have unwittingly been included, the publisher will be pleased to make amends at the earliest possible opportunity.

Cambridge International Examinations is part of the Cambridge Assessment Group. Cambridge Assessment is the brand name of University of Cambridge Local Examinations Syndicate (UCLES), which is itself a department of the University of Cambridge.