



UNIVERSITY OF CAMBRIDGE INTERNATIONAL EXAMINATIONS  
Cambridge International Level 3 Pre-U Certificate  
Principal Subject

[www.XtremePapers.com](http://www.XtremePapers.com)

---

**GEOGRAPHY**

**9768/04**

Paper 4 Research Topic

**October/November 2013**

INSERT

**1 hour 30 minutes**

---

**READ THESE INSTRUCTIONS FIRST**

This Insert contains all the Figures referred to in the Question Paper.

---

This document consists of **10** printed pages and **2** blank pages.



Fig. 1 for Question 1

The locations of ten weather stations used during an investigation of microclimates in a rural area

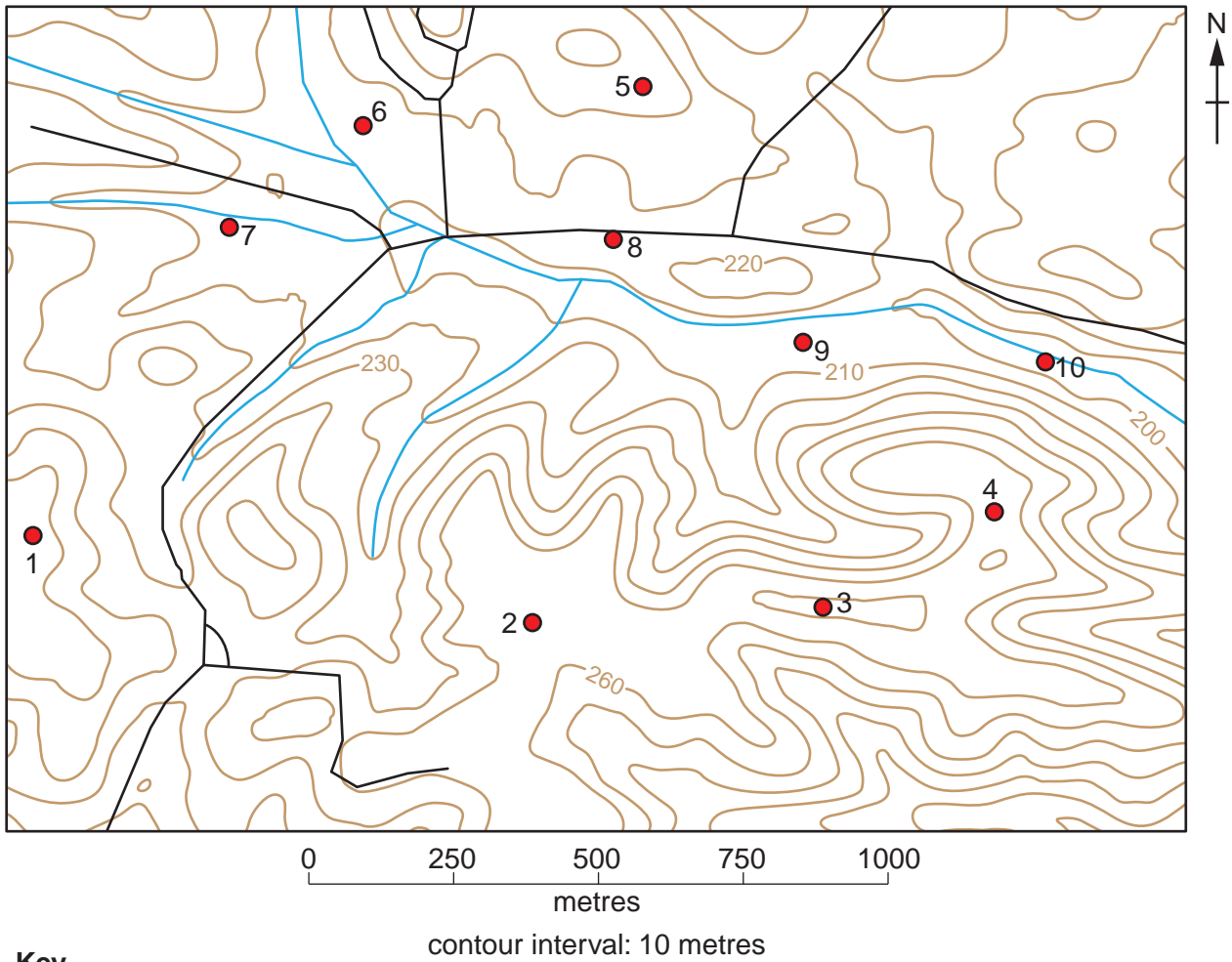


Fig. 2 for Question 1

Mean temperatures for the weather station sites shown in Fig. 1 on the valley floor compared to the mean temperatures for the sites on the hilltops for one night

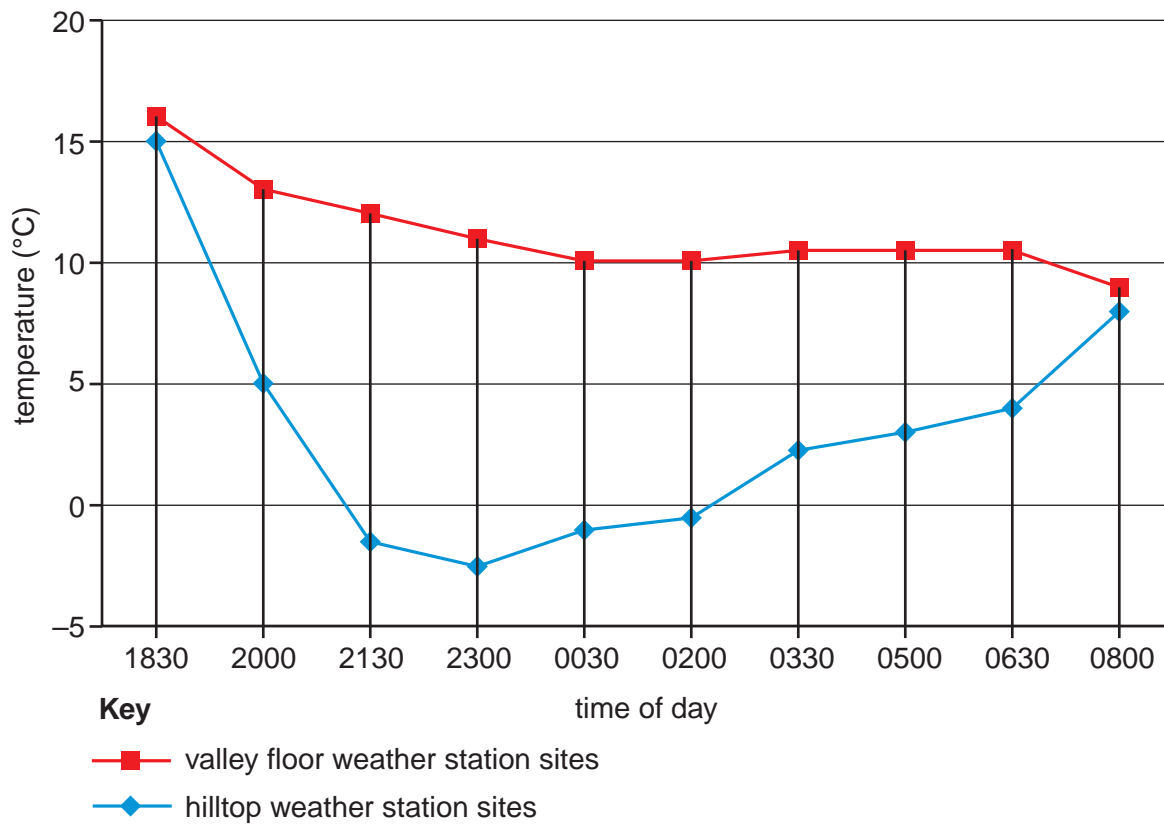


Fig. 3 for Question 1

Maximum wind speeds recorded in a 6 hour period at the weather stations in Fig. 1

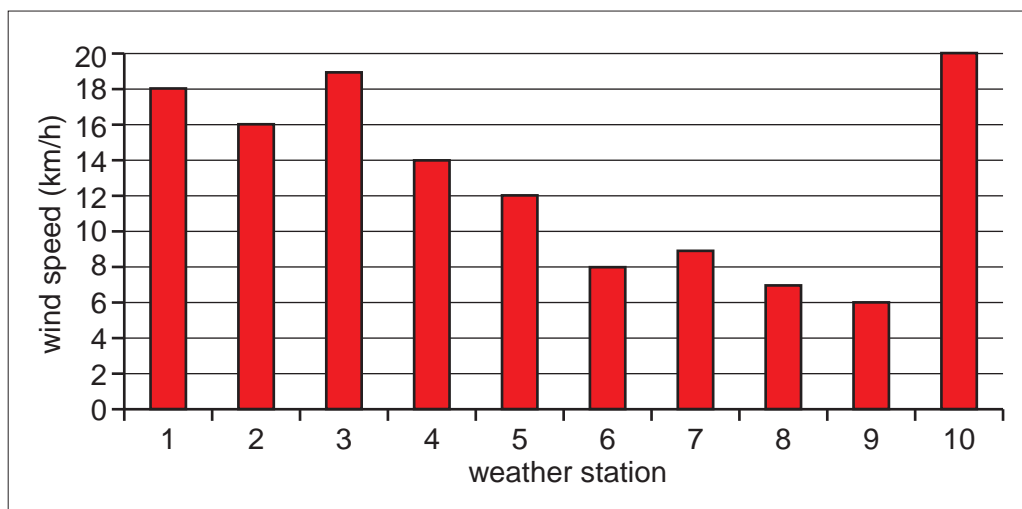


Fig. 4 for Question 2

Mean annual rainfall in East Maui, Hawaii, USA

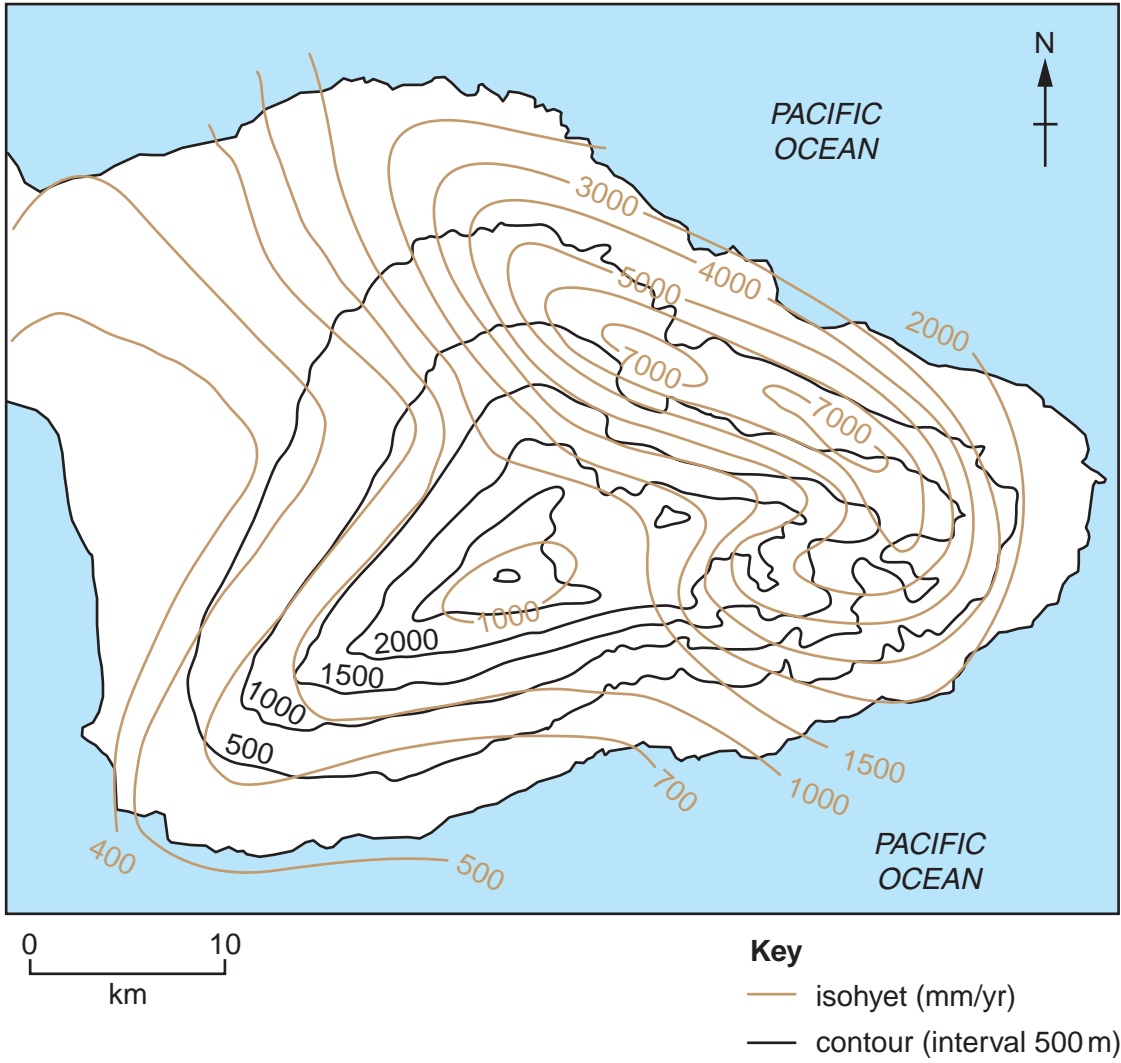


Fig. 5 for Question 5

## Land in agricultural use for selected Green Belts in England, 2010

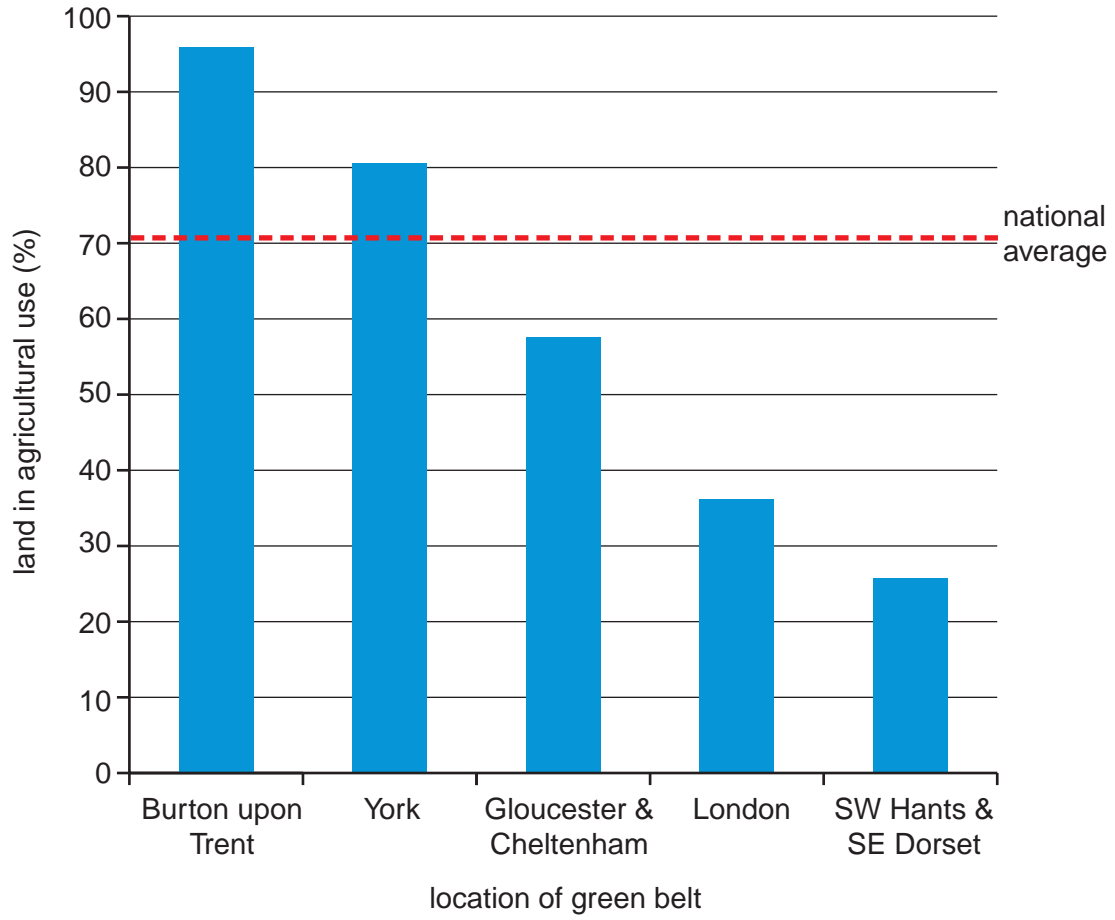


Fig. 6 for Question 5

Environmental constraints on development within a 5 km radius of the city of Durham, England

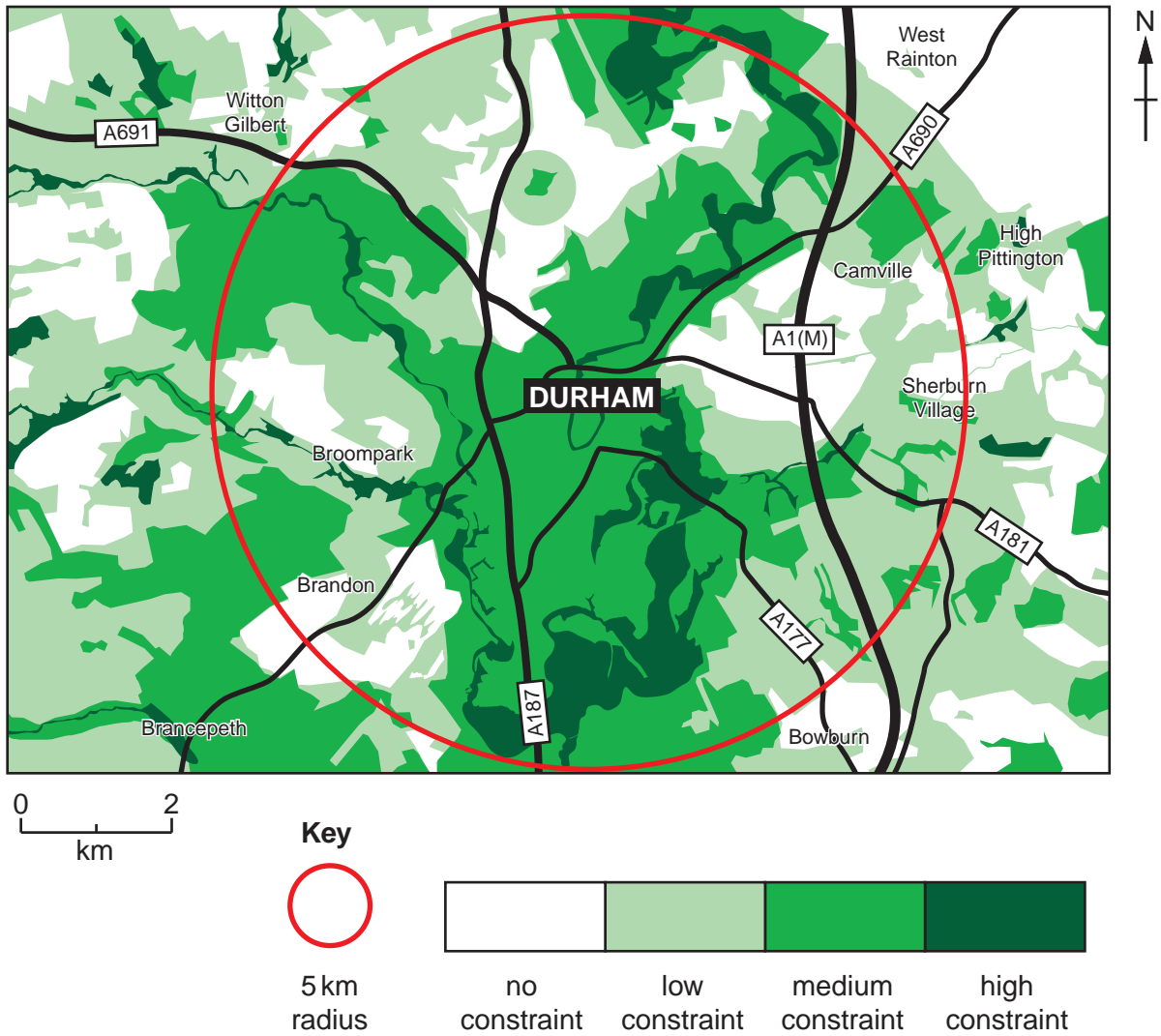


Fig. 7 for Question 6

Dissolved oxygen levels in the River Ganga at Rishikesh and Kanpur, India, 1986 to 2004

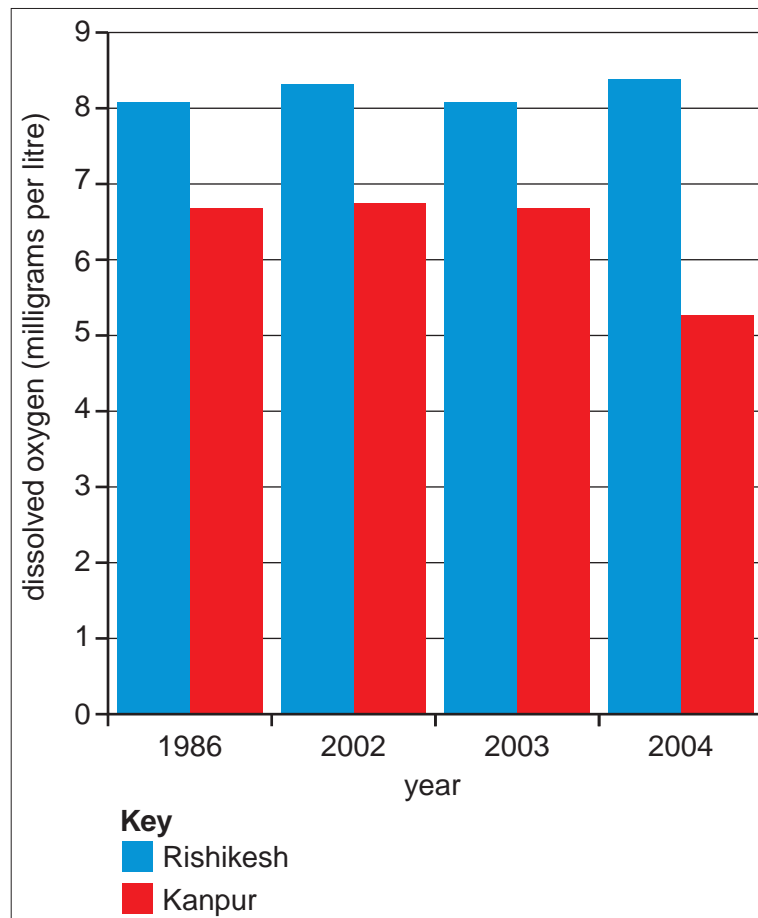


Fig. 8 for Question 9

Changes in the area of selected retail land uses in the Central Business District (CBD) of Belfast, N. Ireland, 1994 to 2004

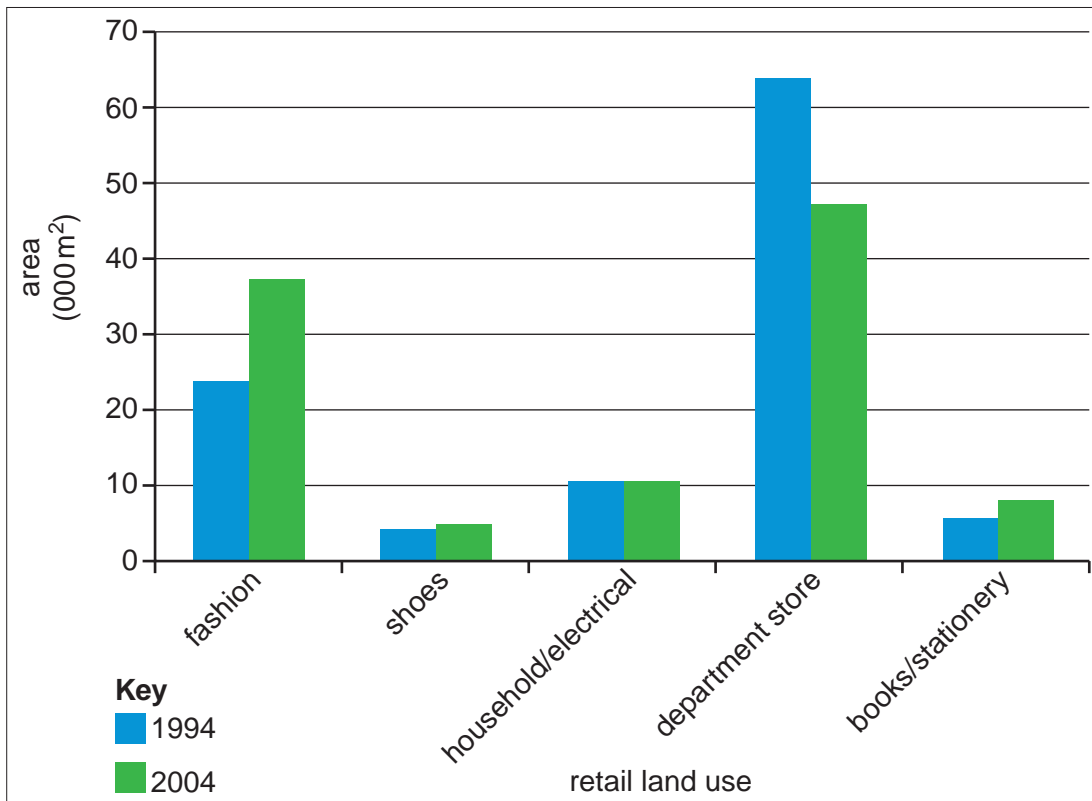


Fig. 9 for Question 9

Changes in the number of shops for selected retail land uses in the CBD of Belfast, N. Ireland, 1994 to 2004

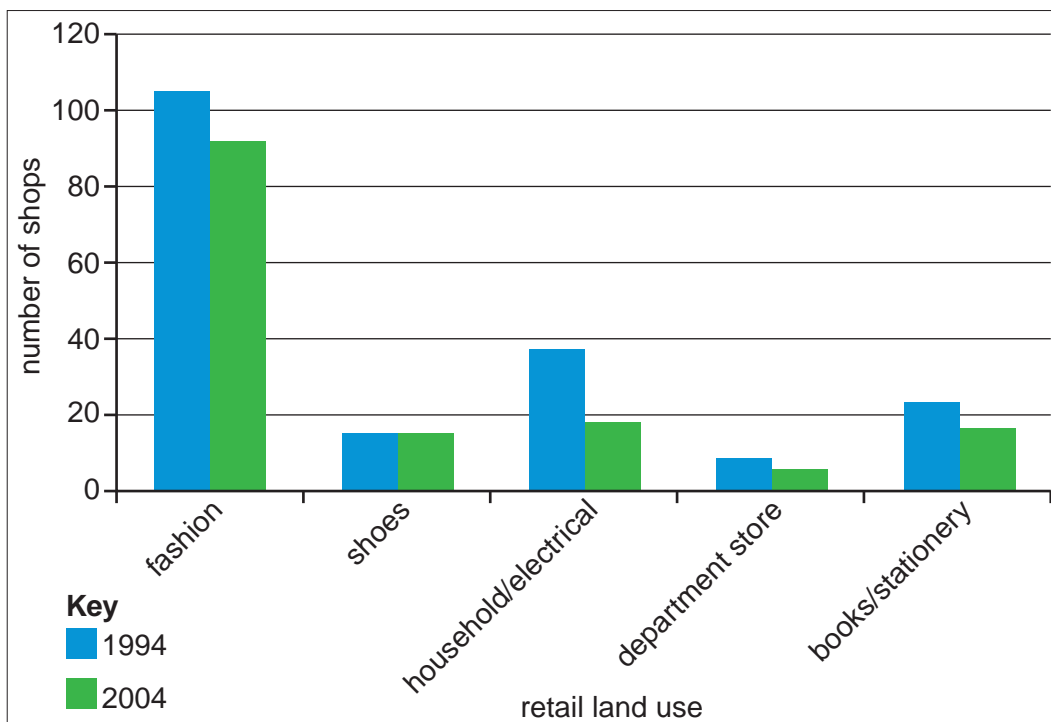




Fig. 10A for Question 9

Changes in the number of vacant shops in 15 selected streets in the northern part of Belfast's CBD between March 2011 and June 2011

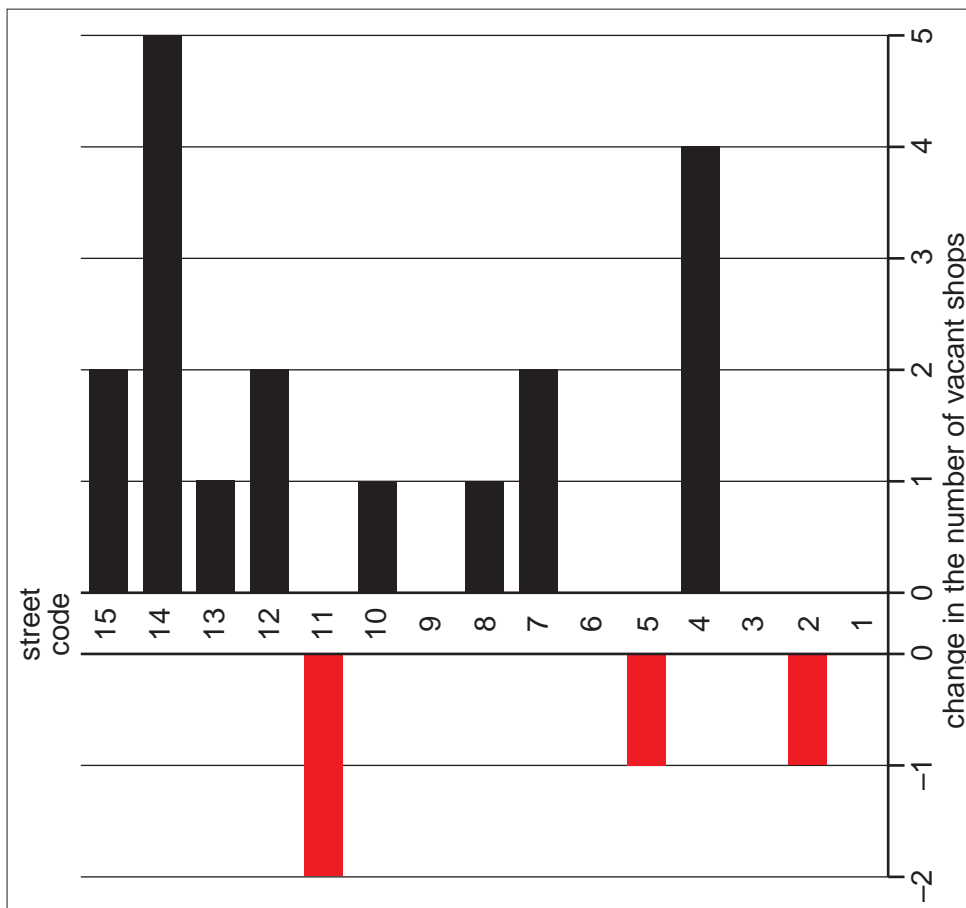


Fig. 10B for Question 9

Changes in the number of vacant shops in 15 selected streets in the southern part of Belfast's CBD between March 2011 and June 2011

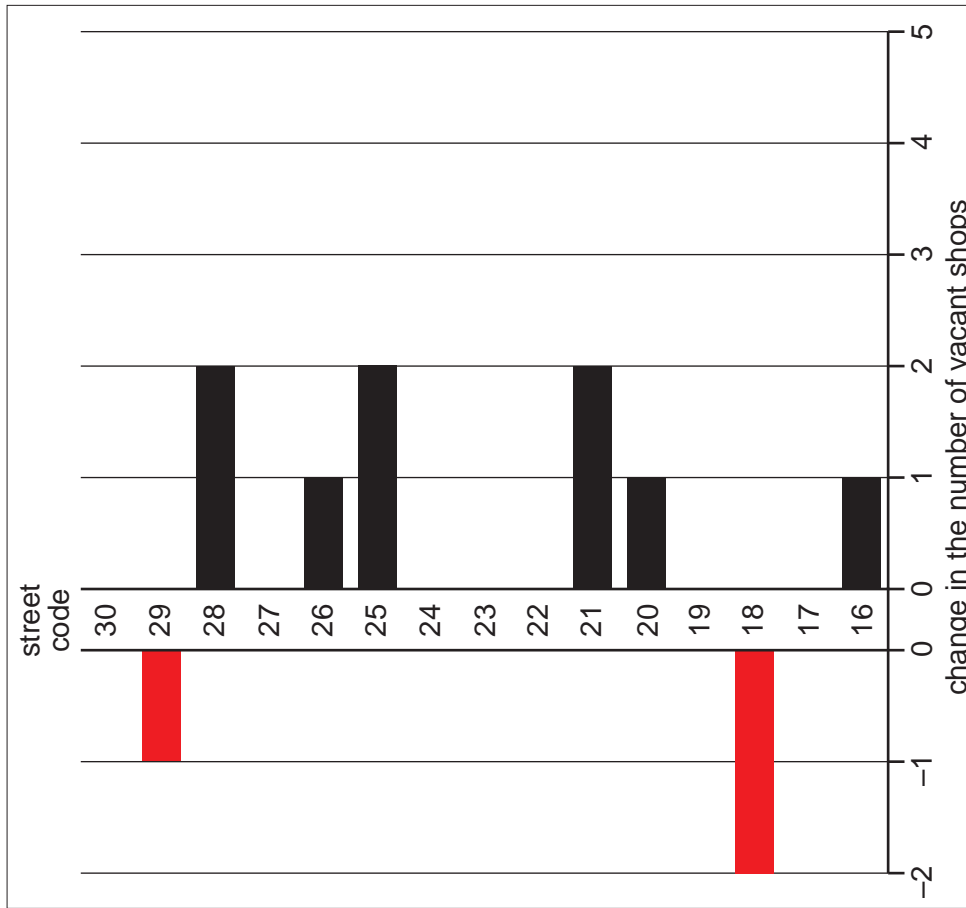
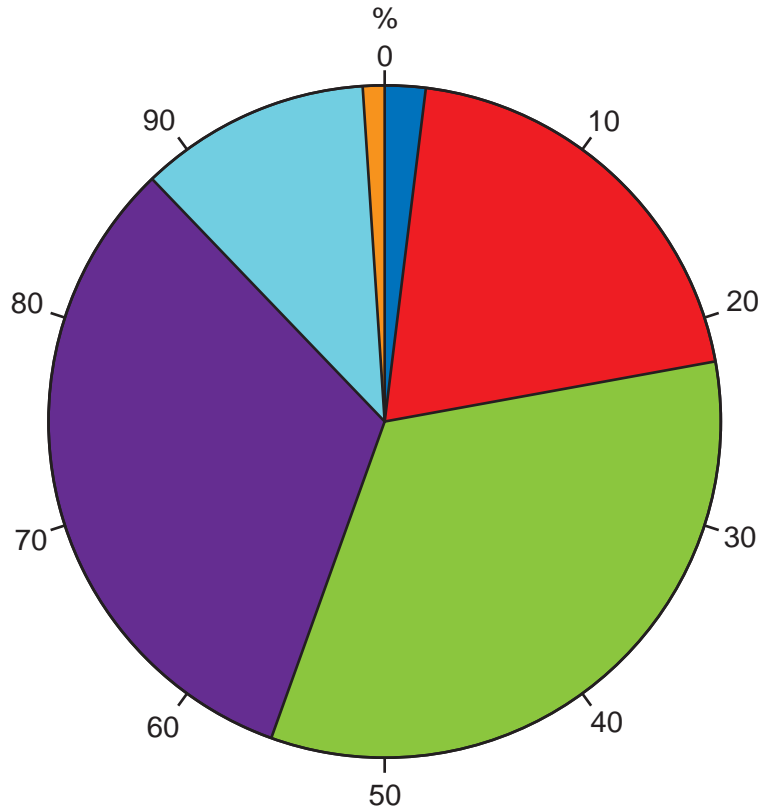


Fig. 11 for Question 10

Annual income of travellers on the Metrobús system, Mexico City



- Key**  
annual income (pesos)
- less than 1500
  - 1500.1 to 4500
  - 4500.1 to 7500
  - 7500.1 to 15000
  - 15000.1 to 30000
  - more than 30000



**BLANK PAGE**

---

Permission to reproduce items where third-party owned material protected by copyright is included has been sought and cleared where possible. Every reasonable effort has been made by the publisher (UCLES) to trace copyright holders, but if any items requiring clearance have unwittingly been included, the publisher will be pleased to make amends at the earliest possible opportunity.

University of Cambridge International Examinations is part of the Cambridge Assessment Group. Cambridge Assessment is the brand name of University of Cambridge Local Examinations Syndicate (UCLES), which is itself a department of the University of Cambridge.