



UNIVERSITY OF CAMBRIDGE INTERNATIONAL EXAMINATIONS
Cambridge International Level 3 Pre-U Certificate
Principal Subject

www.XtremePapers.com

GEOGRAPHY

9768/01

Paper 1 Geographical Issues

October/November 2013

INSERT

2 hours 30 minutes

READ THESE INSTRUCTIONS FIRST

This Insert contains all the Figures referred to in the questions.

This document consists of **5** printed pages and **3** blank pages.



Fig. 1 for Question 1

The extent of lava flows from the Mauna Loa volcano, Hawaii, USA, since 1843

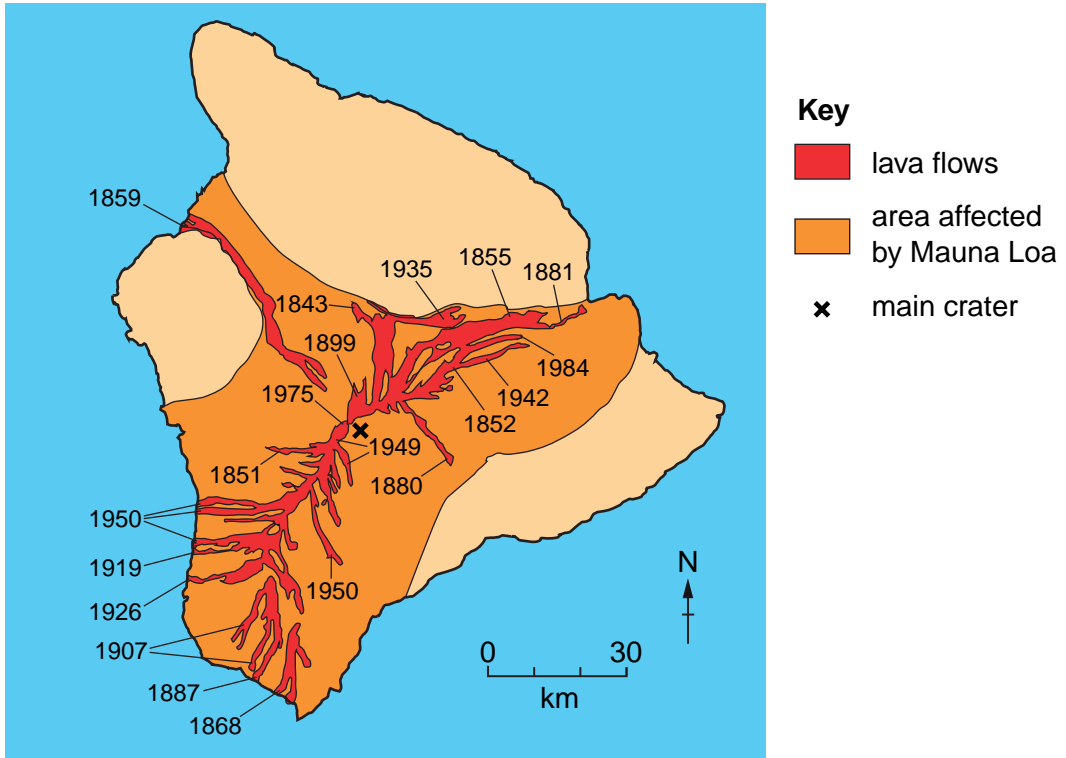


Fig. 2 for Question 1

Hazard map for Mauna Loa volcano, Hawaii

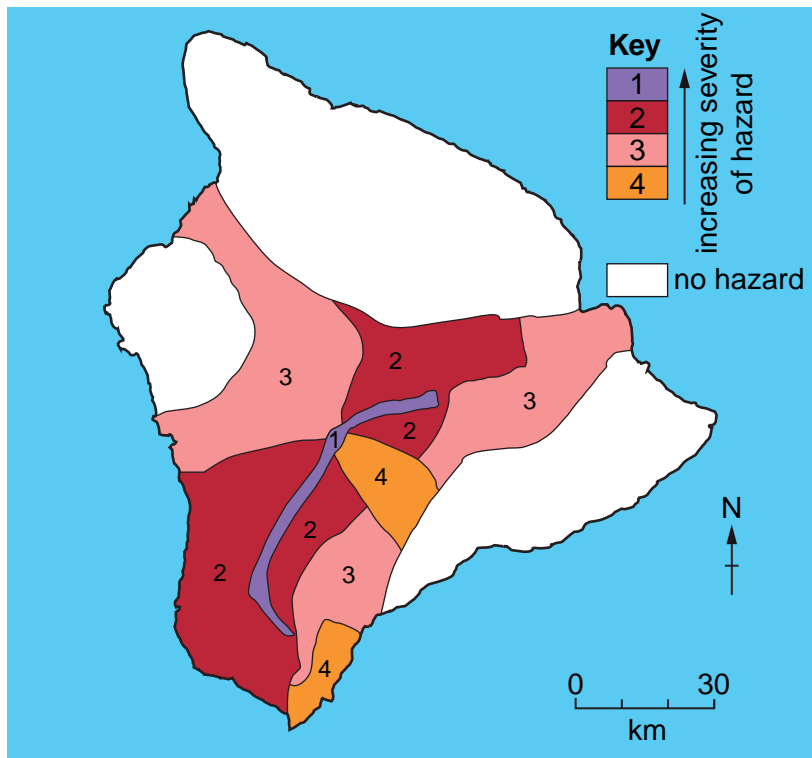


Fig. 3 for Question 2

Average number of tornado reports, per 100 square miles, in part of the USA, 1957–2006

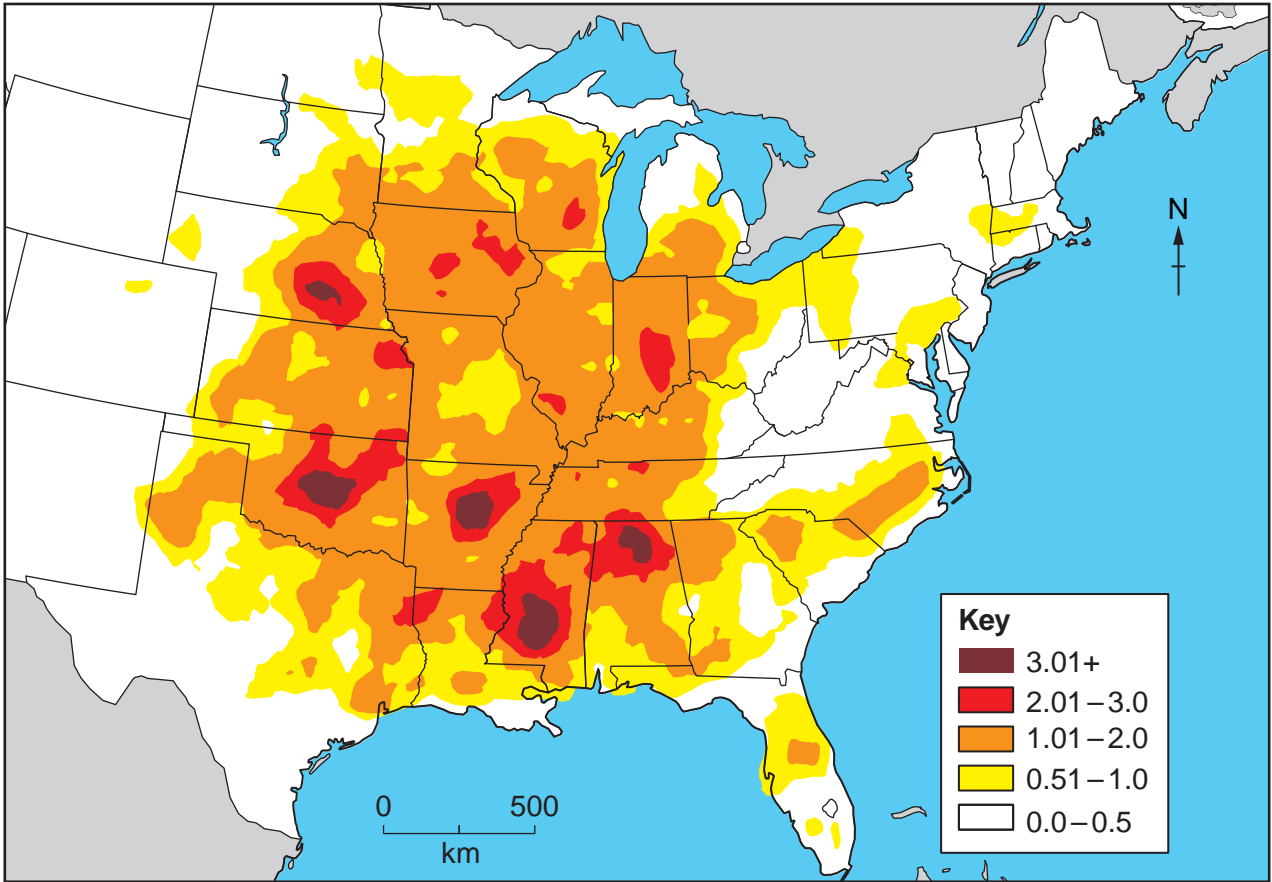


Fig. 4 for Question 3

River regimes for two mountain rivers in Washington State, USA, 2002

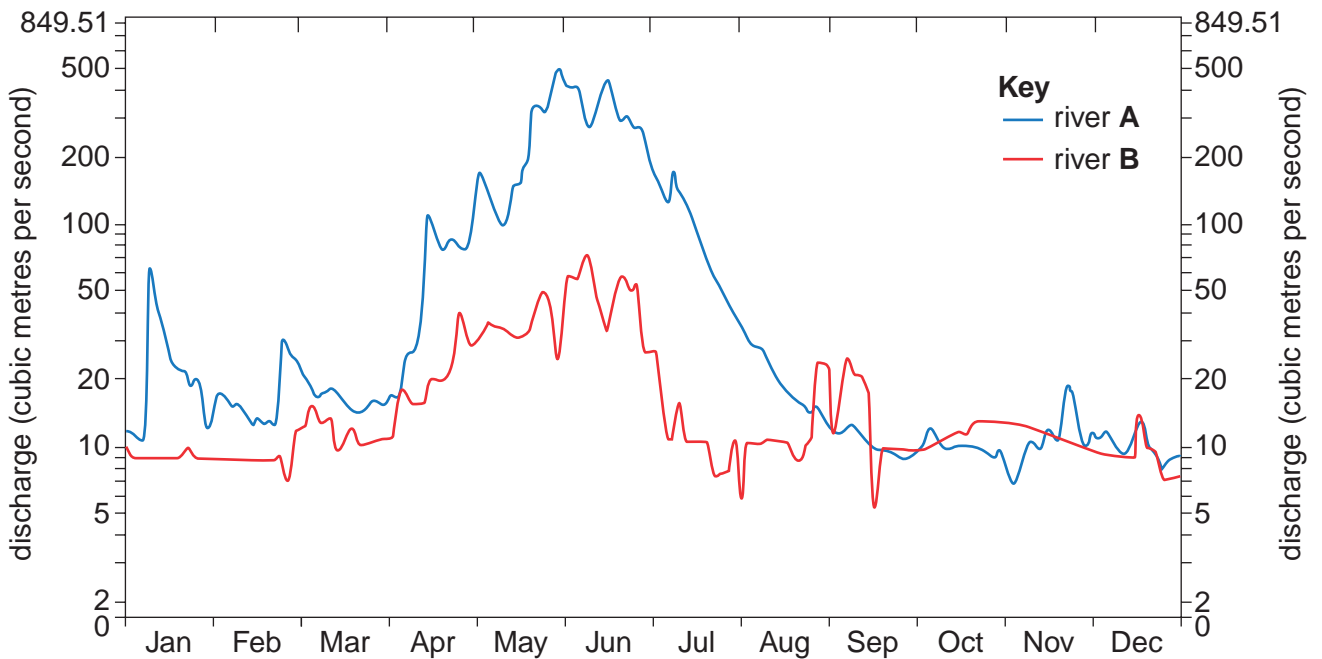


Fig. 5 for Question 4

Some of the main global flows of cocaine, and cocaine consumption, for 2008

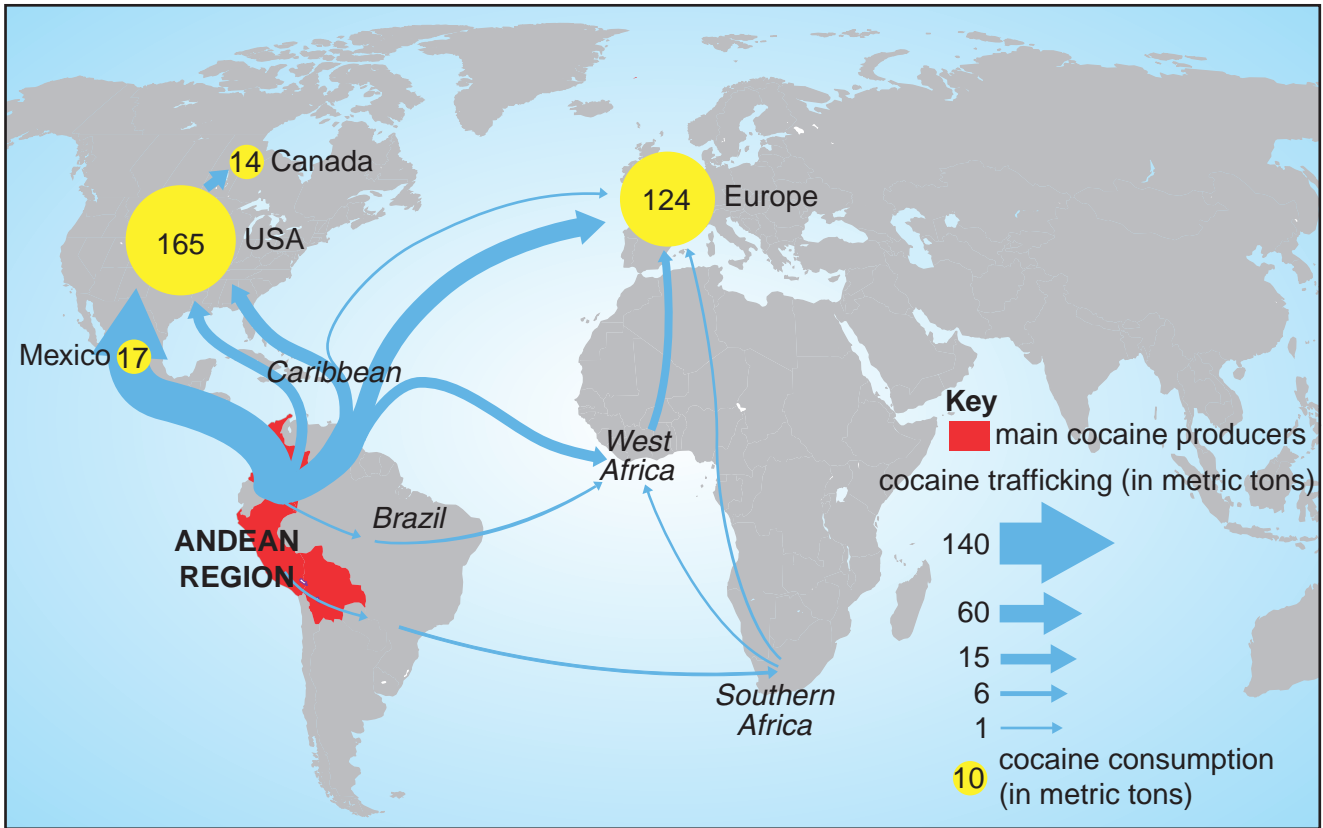


Fig. 6 for Question 5

Factors where affluence might affect health

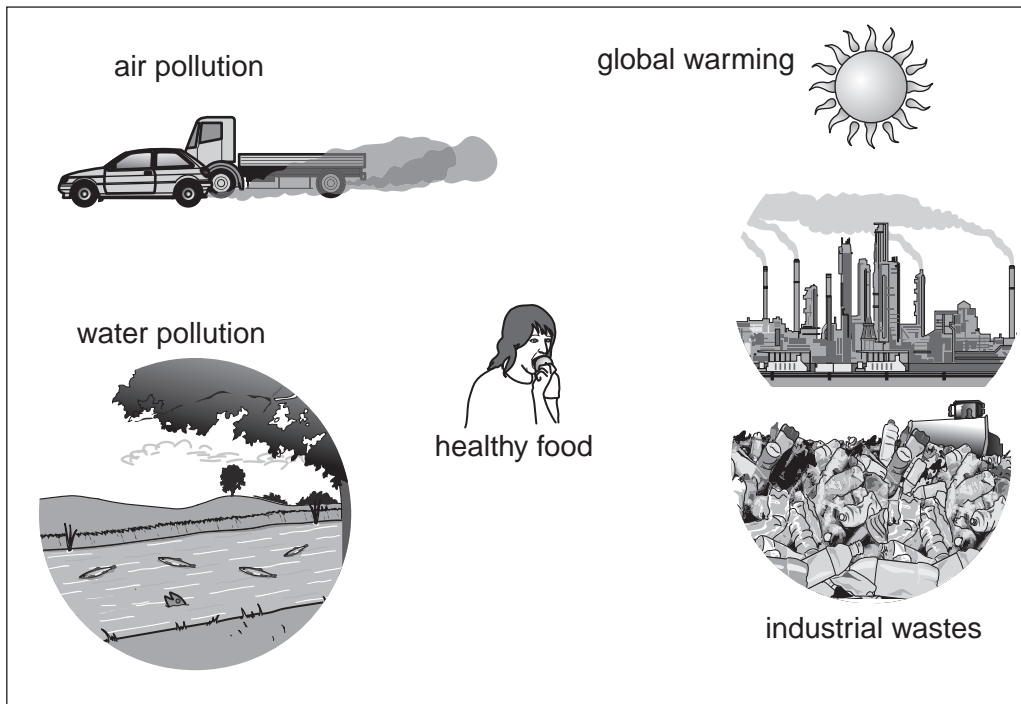
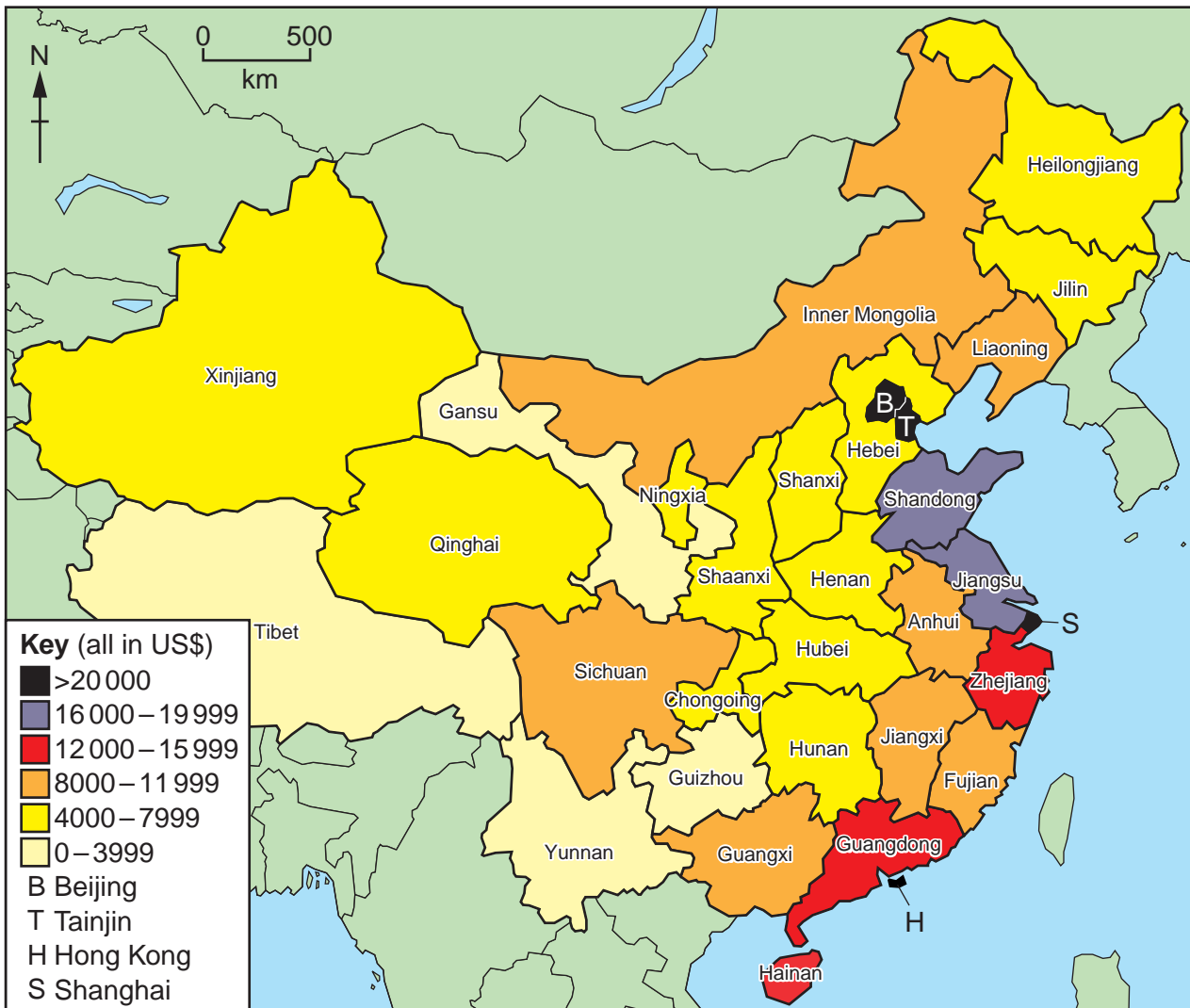


Fig. 7 for Question 6

Per capita Gross Domestic Product (GDP) for the provinces of China (in US dollars), in 2009



BLANK PAGE

Permission to reproduce items where third-party owned material protected by copyright is included has been sought and cleared where possible. Every reasonable effort has been made by the publisher (UCLES) to trace copyright holders, but if any items requiring clearance have unwittingly been included, the publisher will be pleased to make amends at the earliest possible opportunity.

University of Cambridge International Examinations is part of the Cambridge Assessment Group. Cambridge Assessment is the brand name of University of Cambridge Local Examinations Syndicate (UCLES), which is itself a department of the University of Cambridge.