



UNIVERSITY OF CAMBRIDGE INTERNATIONAL EXAMINATIONS  
Cambridge International Level 3 Pre-U Certificate  
Principal Subject

www.XtremePapers.com

---

**GEOGRAPHY**

**9768/04**

Paper 4 Research Topic

**May/June 2013**

INSERT

**1 hour 30 minutes**

---

**READ THESE INSTRUCTIONS FIRST**

This Insert contains all the Figures referred to in the Question Paper.

---

This document consists of **13** printed pages and **3** blank pages.



Fig. 1 for Question 1

## Wind speed information for the London Borough of Ealing, UK

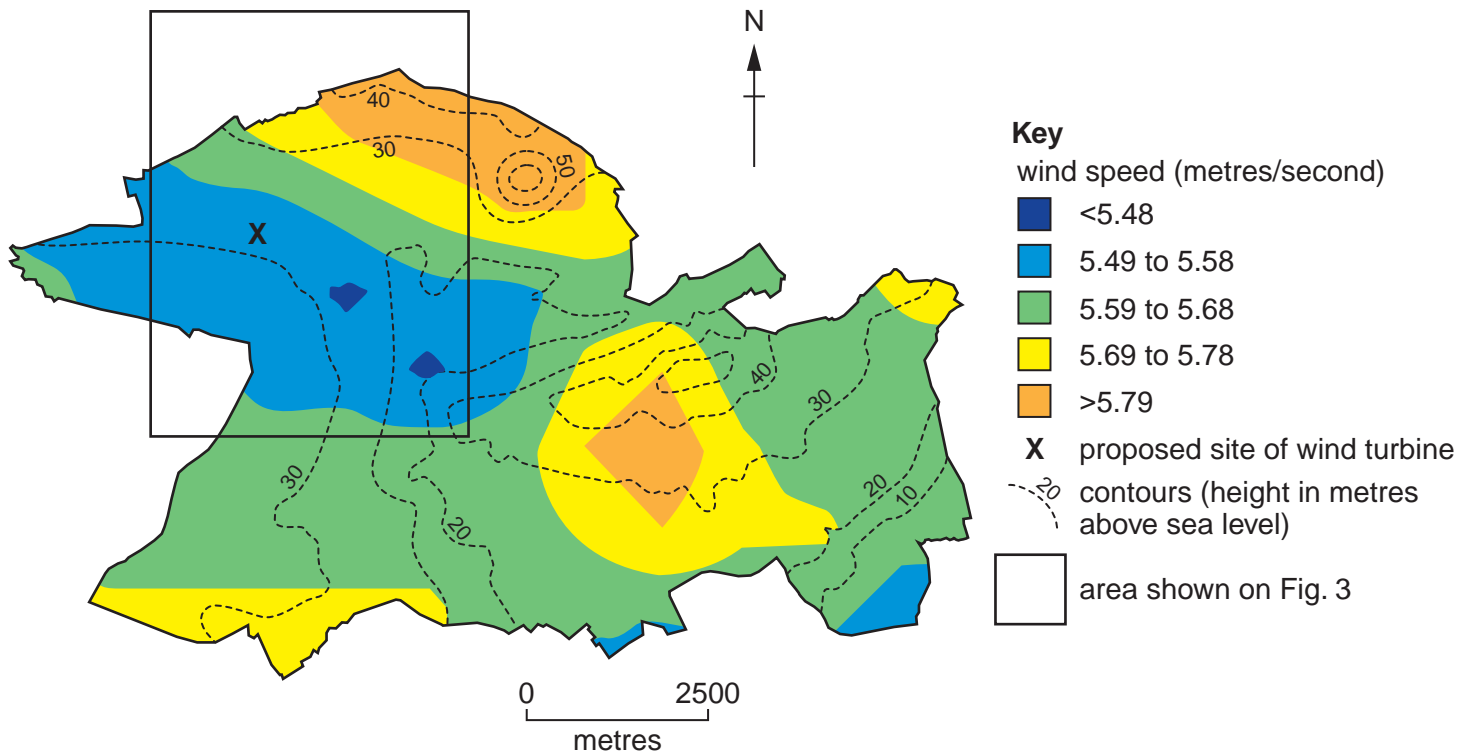


Fig. 2 for Question 1

## Wards in the London Borough of Ealing, UK

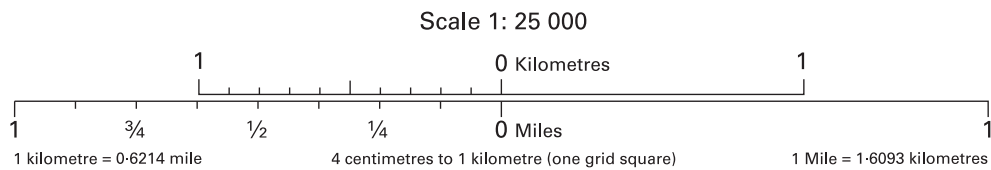








## Key for Fig. 3



## Key

✕ proposed site of wind turbine

## ROADS AND PATHS

	A 35	Dual carriageway
	A 30	Main road
	B 3074	Secondary road

## RAILWAYS

	Multiple track	} Standard gauge
	Single track	
	Road over; road under; level crossing	
	Cutting; tunnel; embankment	
	Station, open to passengers; siding	

## PUBLIC RIGHTS OF WAY

	Footpath
	Bridleway

## OTHER PUBLIC ACCESS

	Other routes with public access
	National Trail / Long Distance Route; Recreational route
	Traffic-free cycle route
	National cycle network route number—traffic free

## GENERAL FEATURES

	Place of worship
	Current or former place of worship
	— with tower
	— with spire, minaret or dome
	Building
	Important building
	Slopes
CH	Clubhouse
FB	Footbridge
Sch	School

## VEGETATION

Vegetation limits are defined by positioning of symbols

	Coniferous trees
	Non-coniferous trees
	Coppice

## HEIGHTS AND NATURAL FEATURES

52	Ground survey height
284	Air survey height

## TOURIST AND LEISURE INFORMATION

	Golf course or links
	Nature reserve
	Water activities
	Recreation / leisure / sports centre

Fig. 4 for Question 2

**Actual daily maximum temperatures and predicted temperatures at selected points for a new residential development, Singapore, 2009**

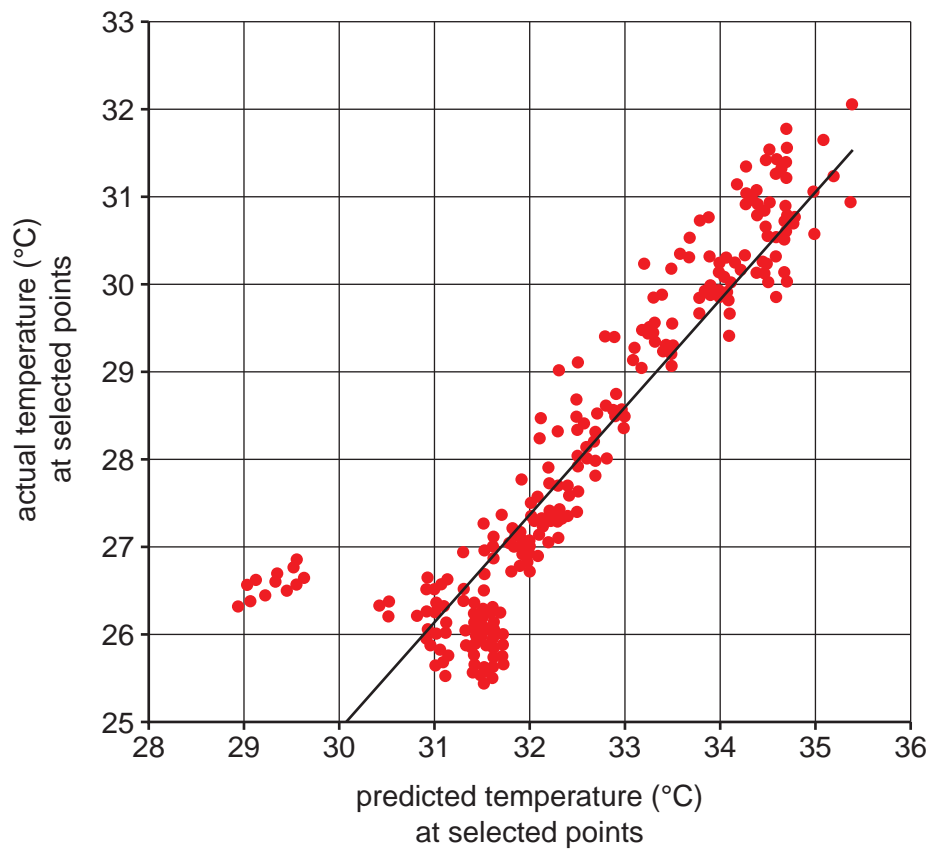


Fig. 5 for Question 5

## Soil conservation practices on farms in Canada, 2001 and 2006

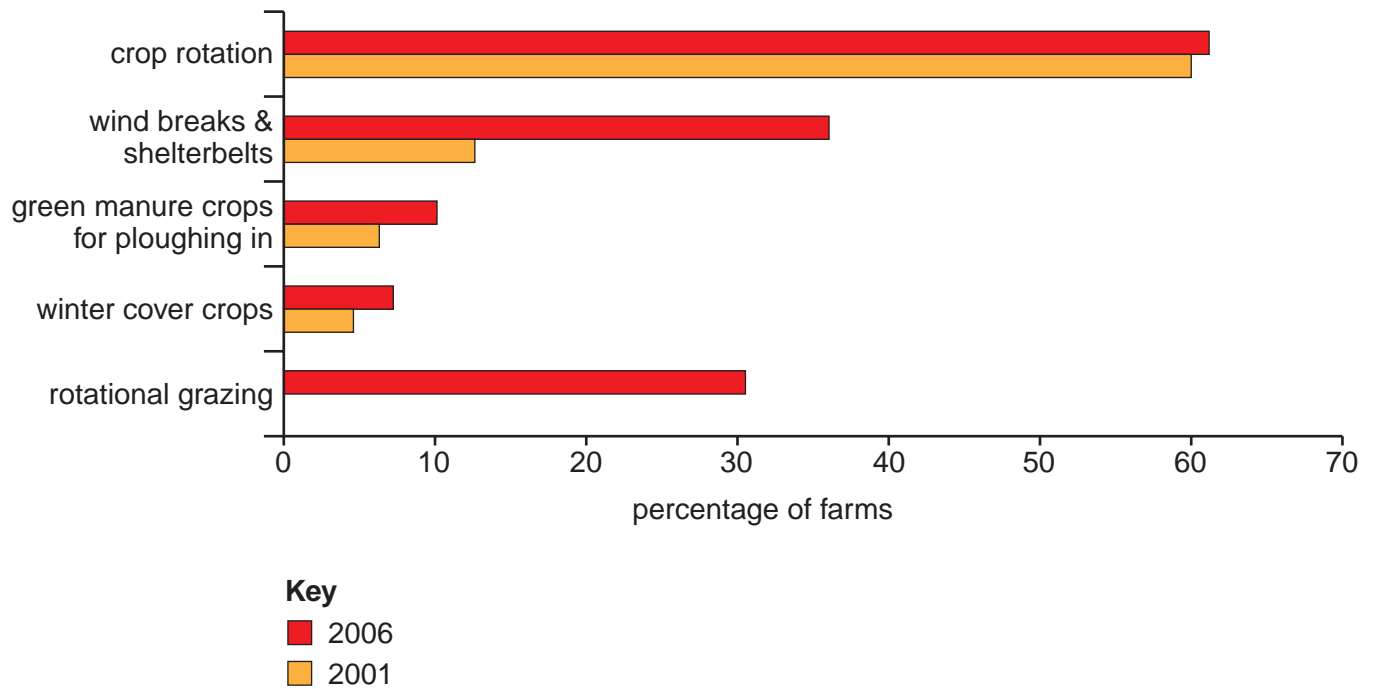
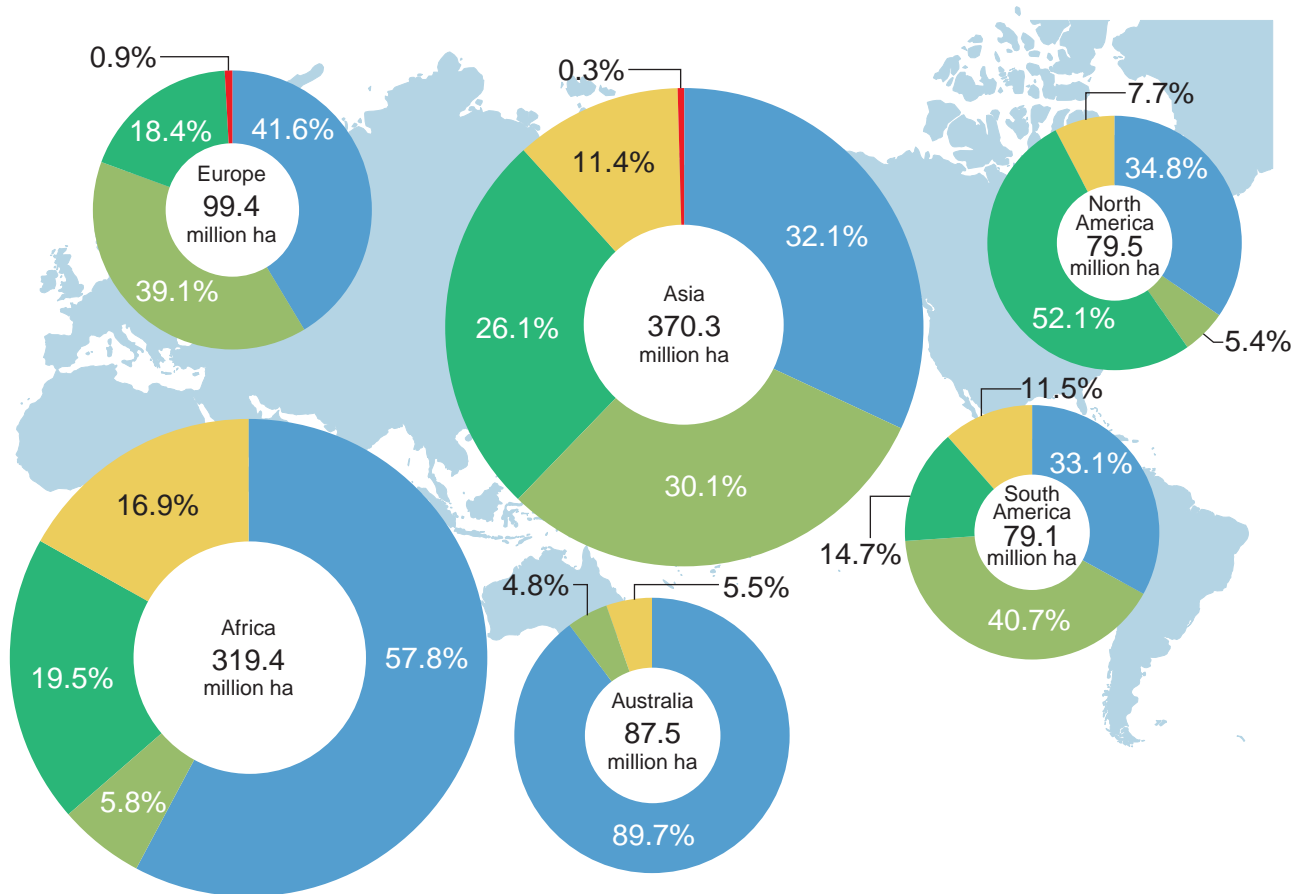


Fig. 6 for Question 5

### The main causes of soil degradation in susceptible drylands by region



#### Key

- overgrazing
- deforestation
- agricultural activities
- overexploitation of vegetation for domestic use
- bio-industrial activities



Fig. 7 for Question 6

## Forest areas in Southern Cameroon, West Africa

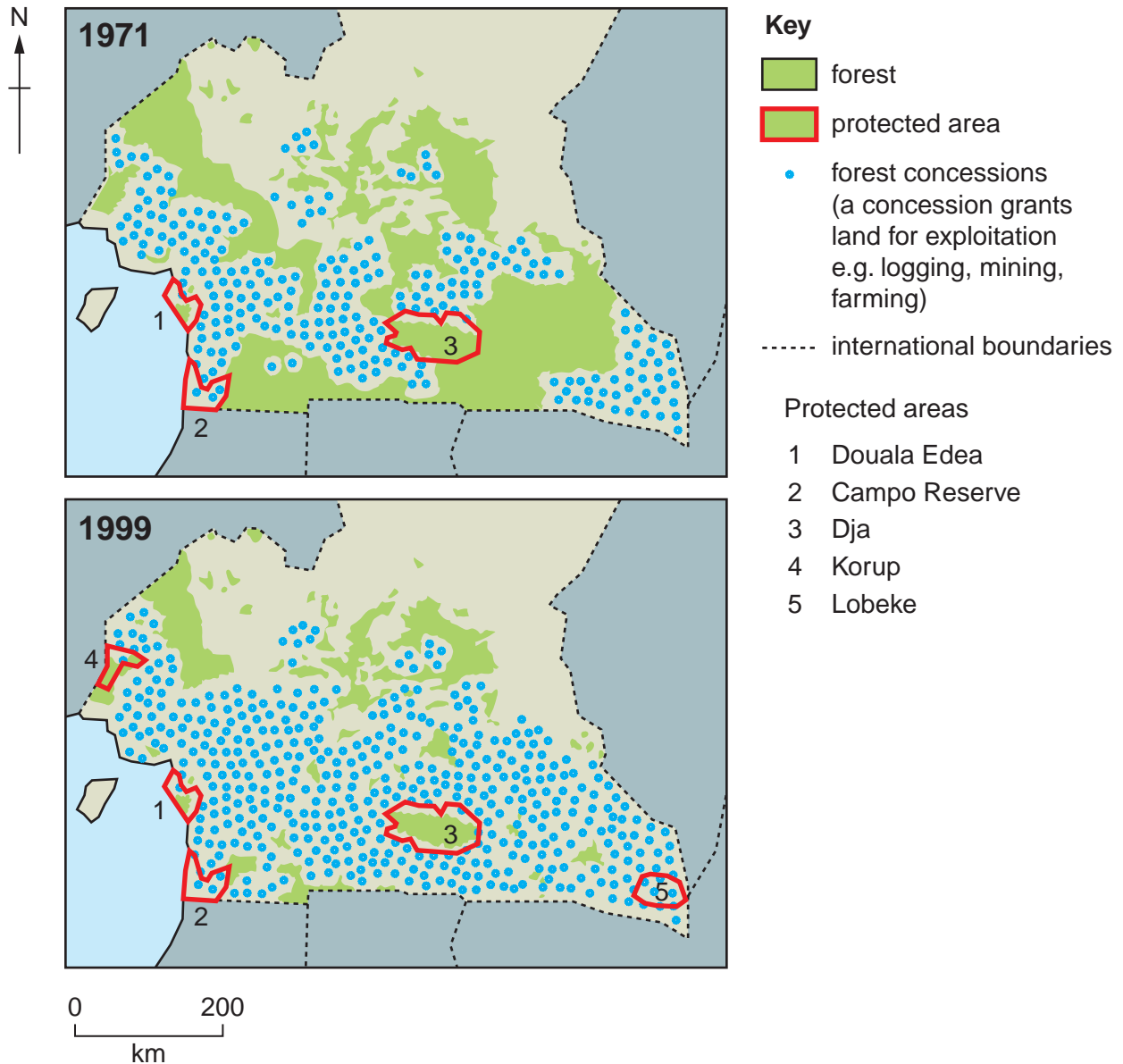
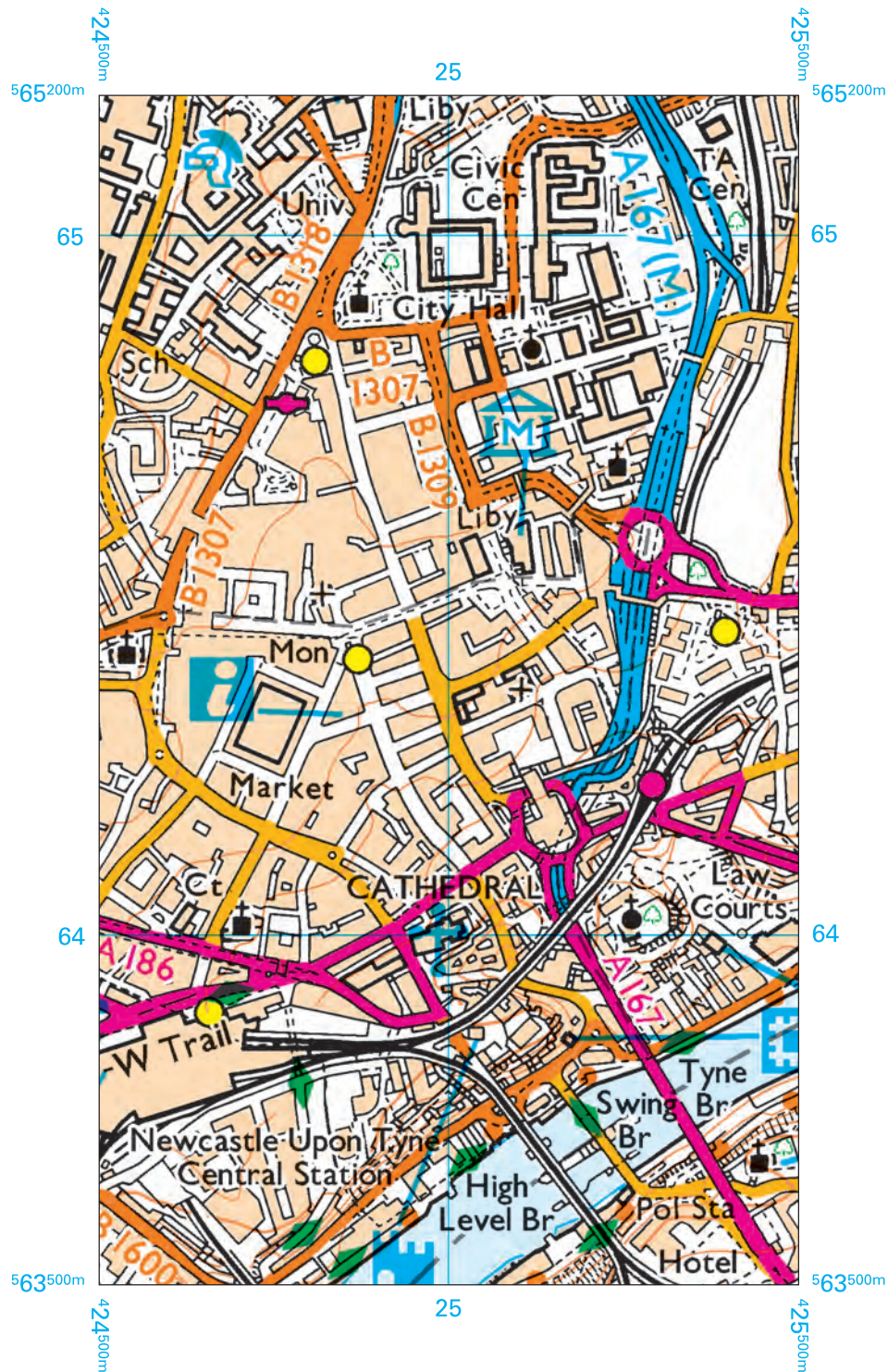


Fig. 8 for Question 9

## The Central Business District of Newcastle upon Tyne, UK



Scale 1:10 000

0 Metres

500

1000

0 Miles

 $\frac{1}{4}$  $\frac{1}{2}$  $\frac{3}{4}$ 

5 centimetres = 500 metres

## Key for Fig. 8

ROADS AND PATHS Not necessarily rights of way

	Motorway		Service Area		Junction Number
	Dual carriageway				
	Main road				
	Secondary road				

## RAILWAYS

	Multiple track
	{ Narrow gauge or Light Rapid Transit System (LRTS) and station
	Road over; road under; level crossing
	Station, open to passengers; siding

## PUBLIC ACCESS

		National Trail / Long Distance Route; Recreational route
		National cycle network route number—traffic free

## BOUNDARIES

	Unitary Authority (UA), Metropolitan District (Met Dist), London Borough (LB) or District (Scotland & Wales are solely Unitary Authorities)
--	---

## GENERAL FEATURES

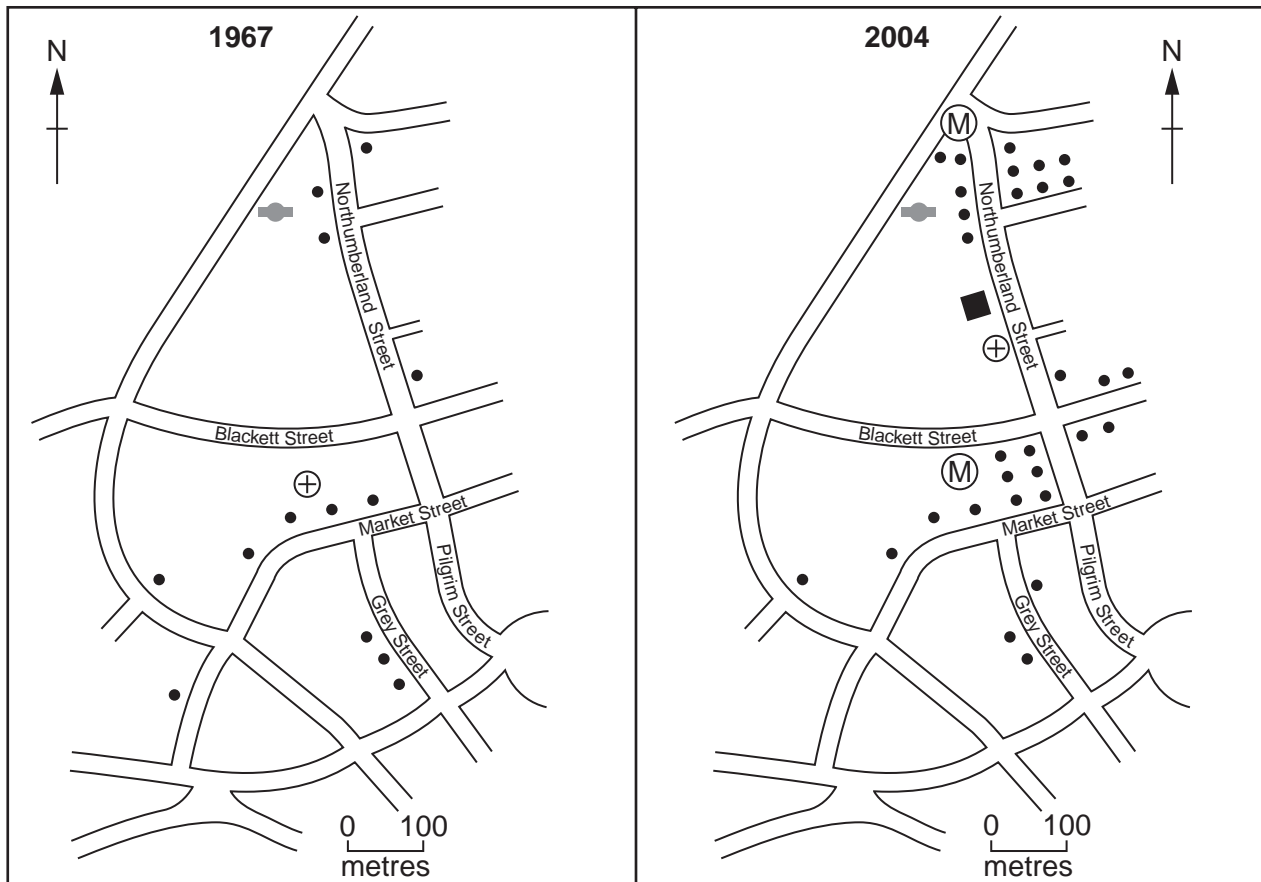
+	Place of worship
	Current or former place of worship
	— with tower
	— with spire, minaret or dome
	Building
	Important building
	Bus or coach station
	Beacon
52 ·	Ground survey height
Mon	Monument
PoI Sta	Police station
Sch	School
	Slopes
	Water; mud

## TOURIST AND LEISURE INFORMATION

	Information centre
	Museum
	English Heritage property
	Castle / fort

Fig. 9 for Question 9

**The location of banks and building societies in the CBD of Newcastle upon Tyne in 1967 and 2004**



**Key**

- PLVI (peak land value intersection – 2004)
- Ⓜ metro station
- ▣ bus station
- ⊕ centre of gravity
- bank or building society

## Figs 10A and 10B for Question 10

## Pedestrian flows in Ambleside, Cumbria

Fig. 10A

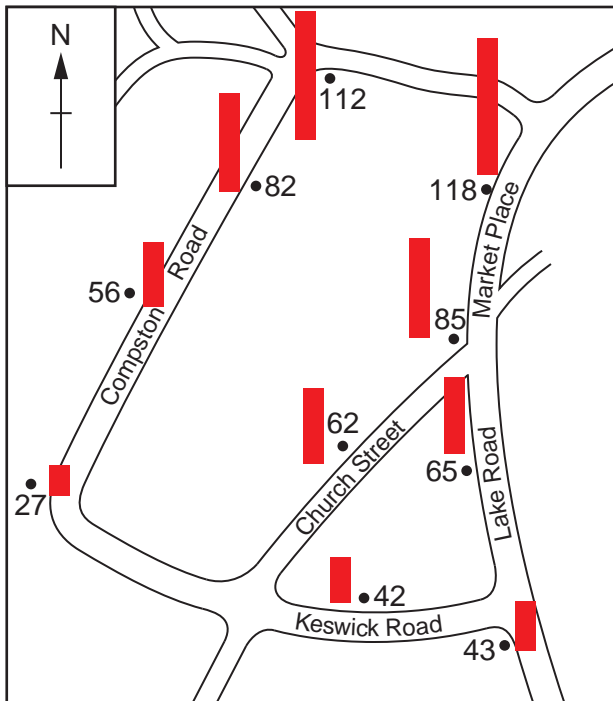


Fig. 10A

Fig. 10B

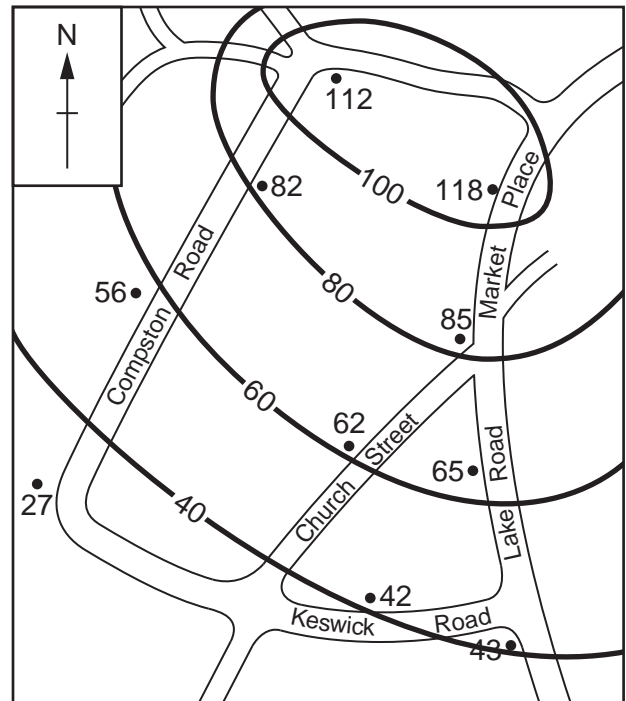


Fig. 10B

## Key

- 56 survey points  
(figure shows  
pedestrians per hour)
- 60 — pedestrian flow isolines

Date of survey: Friday 28/03/03

0 100  
metres

scale  
120  
80  
40  
0  
pedestrian flow  
per hour



**BLANK PAGE**



**BLANK PAGE**

---

Permission to reproduce items where third-party owned material protected by copyright is included has been sought and cleared where possible. Every reasonable effort has been made by the publisher (UCLES) to trace copyright holders, but if any items requiring clearance have unwittingly been included, the publisher will be pleased to make amends at the earliest possible opportunity.

University of Cambridge International Examinations is part of the Cambridge Assessment Group. Cambridge Assessment is the brand name of University of Cambridge Local Examinations Syndicate (UCLES), which is itself a department of the University of Cambridge.