



UNIVERSITY OF CAMBRIDGE INTERNATIONAL EXAMINATIONS
Cambridge International Level 3 Pre-U Certificate
Principal Subject

www.XtremePapers.com

GEOGRAPHY

9768/01

Paper 1 Geographical Issues

May/June 2013

INSERT

2 hours 30 minutes

READ THESE INSTRUCTIONS FIRST

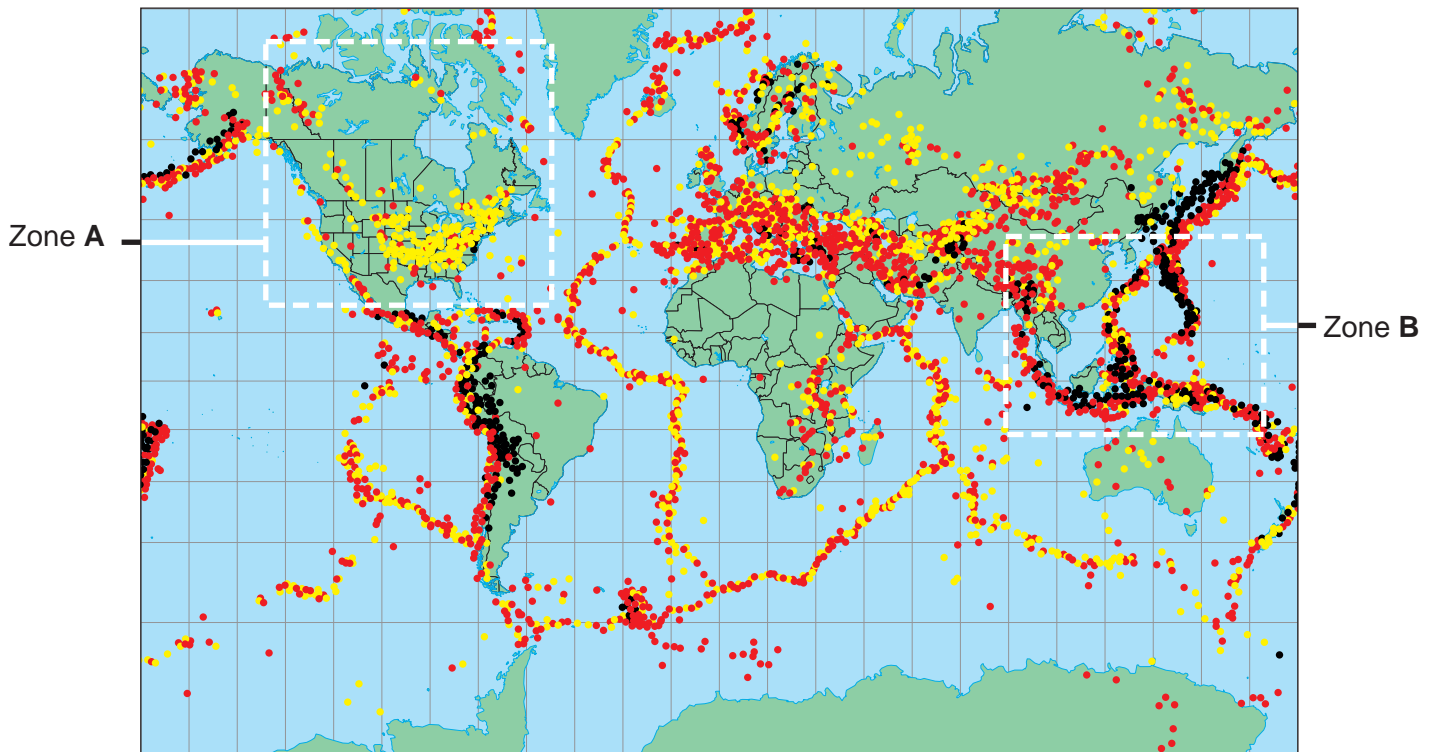
This Insert contains all the Figures, Photographs and the Table referred to in the questions.

This document consists of **10** printed pages and **2** blank pages.



Fig. 1 for Question 1

The global distribution of earthquake depths for the last 100 years

**Key**

- shallow (0–25 km)
- intermediate (26–75 km)
- deep (76–660 km)

Photograph A for Question 2

A street in New York after the blizzard of 1888

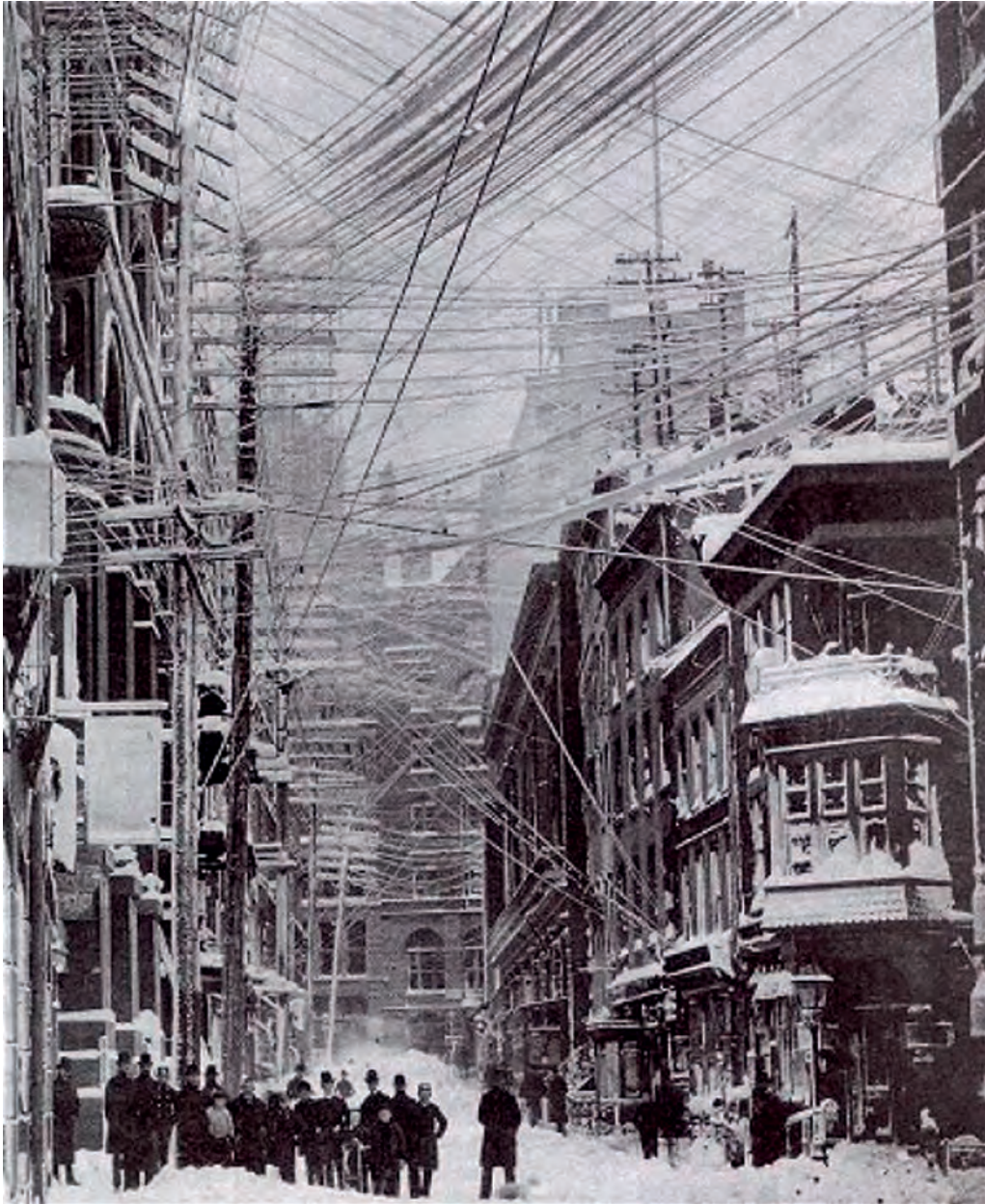


Fig. 2A for Question 2

The number of blizzard events and associated injuries for the state of Wisconsin, USA, between 1982 and 2009

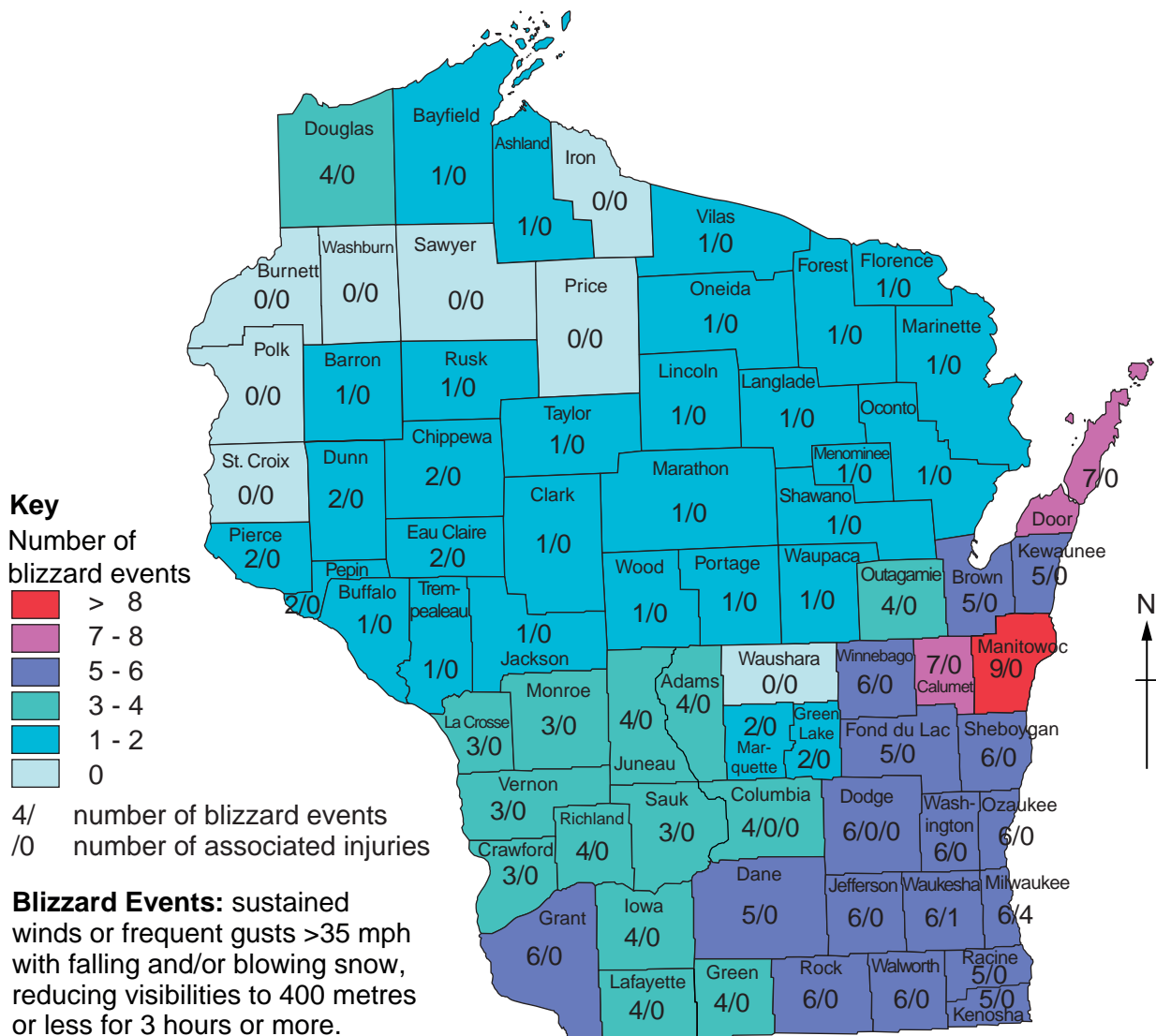


Fig. 2B for Question 2

The location of Wisconsin

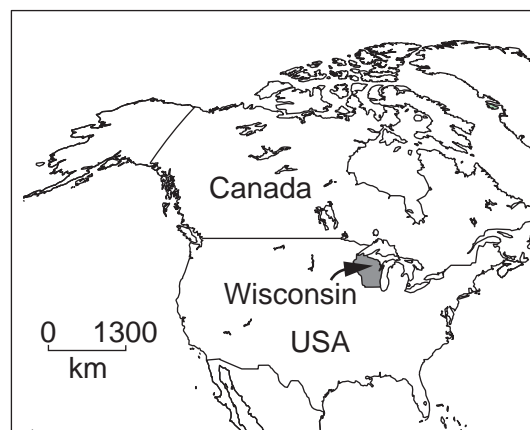


Fig. 3 for Question 3

The main components of a storm hydrograph

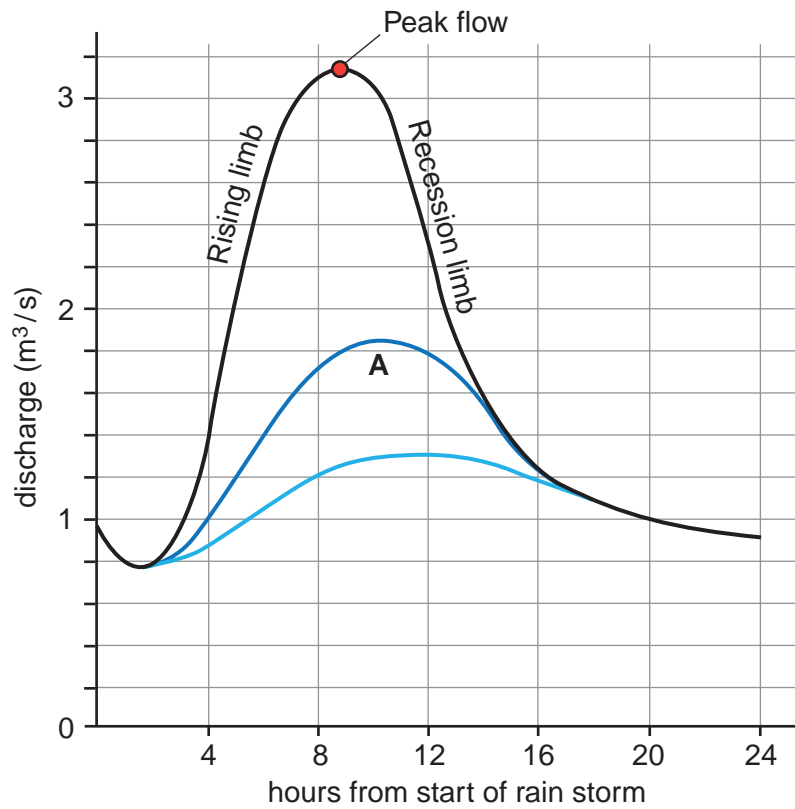


Fig. 4 for Question 3

The relative frequency of extreme flood events for the period 1985 to 2008

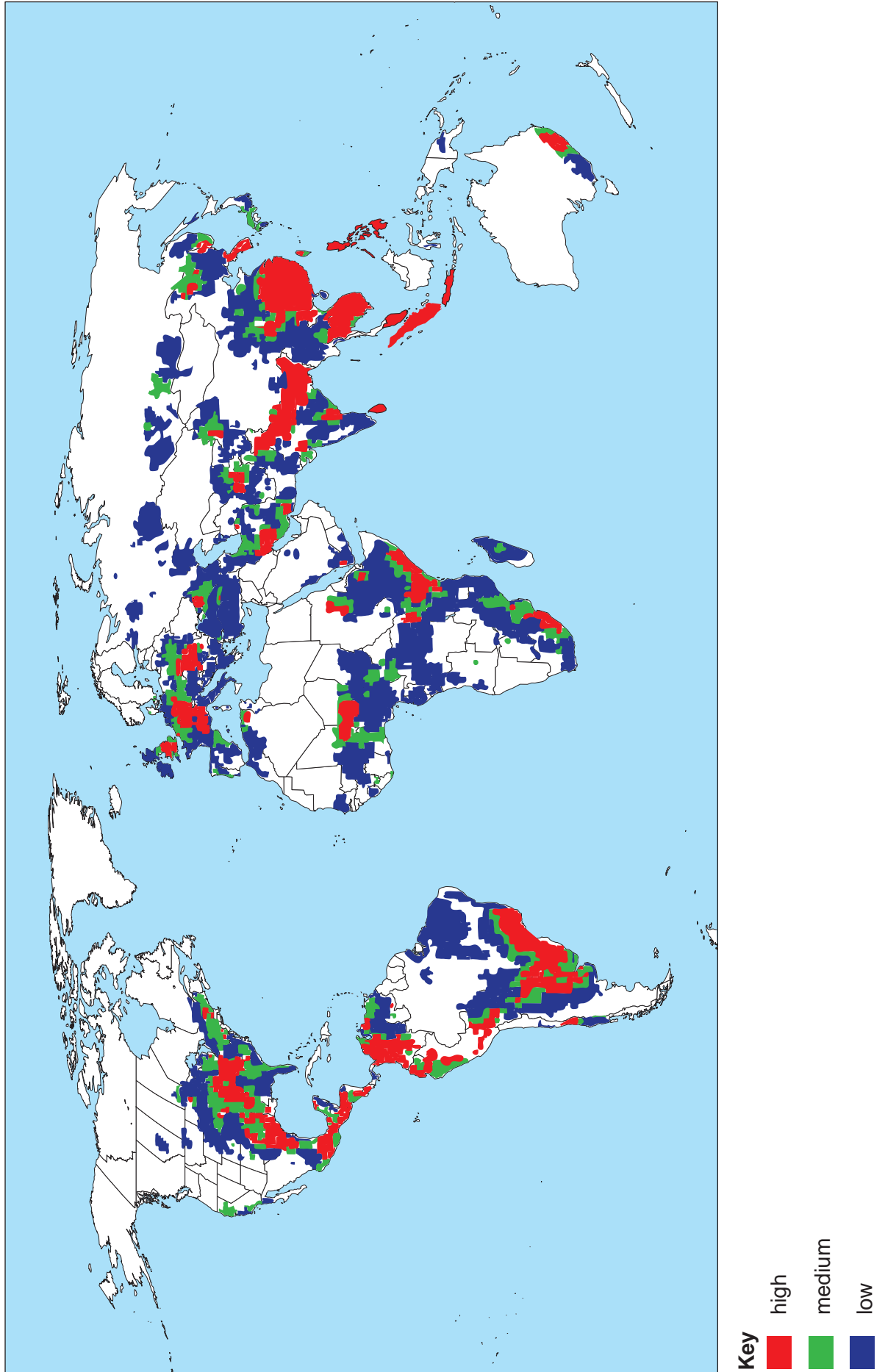


Fig. 5 for Question 4

A cartoon illustrating defensible space



Photograph B for Question 4

An inner city housing development



Fig. 6 for Question 5

Life expectancy by country for 2008

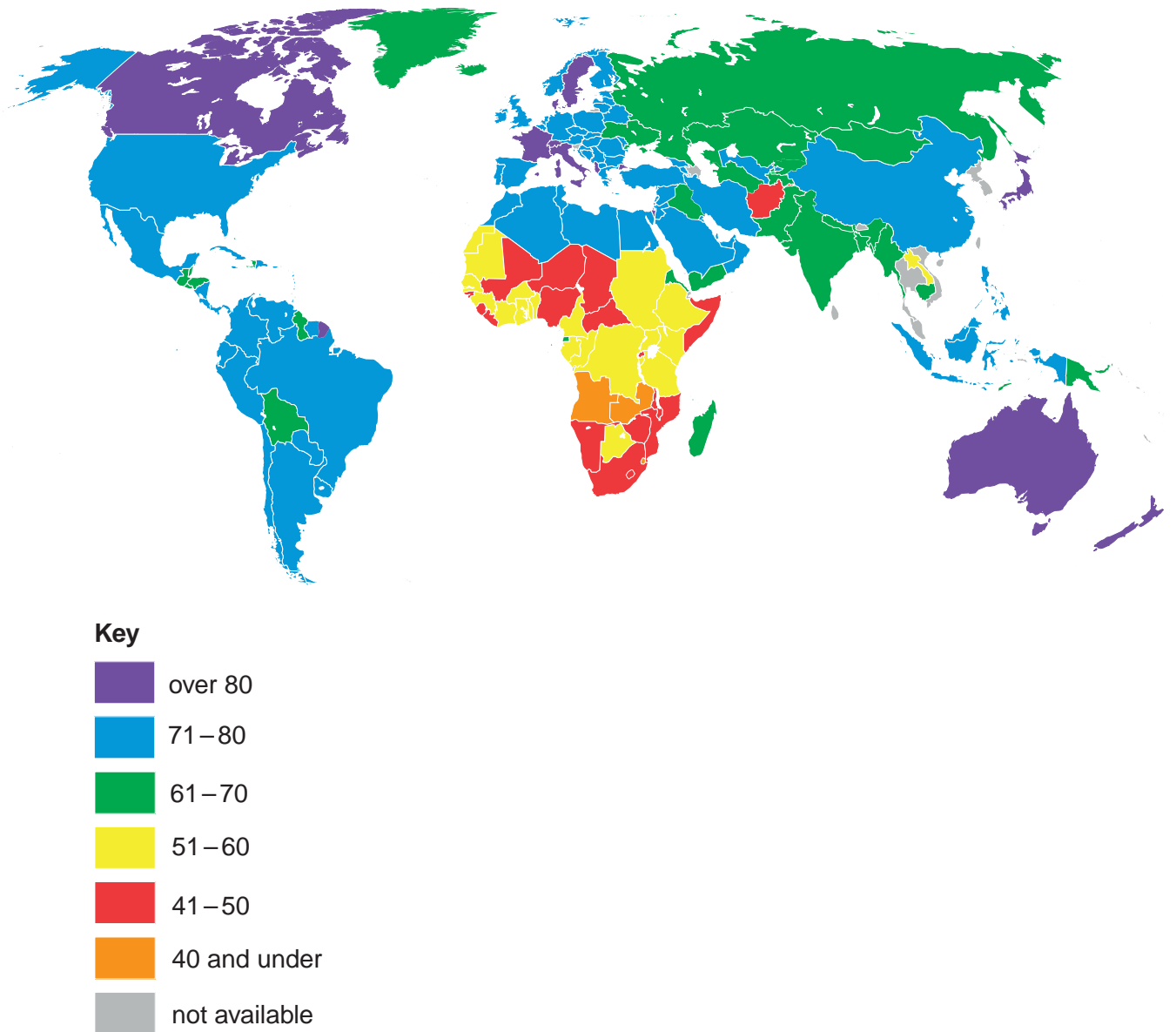


Fig. 7 for Question 5

Trends in life expectancy, by selected world regions, between 1950 and 2005

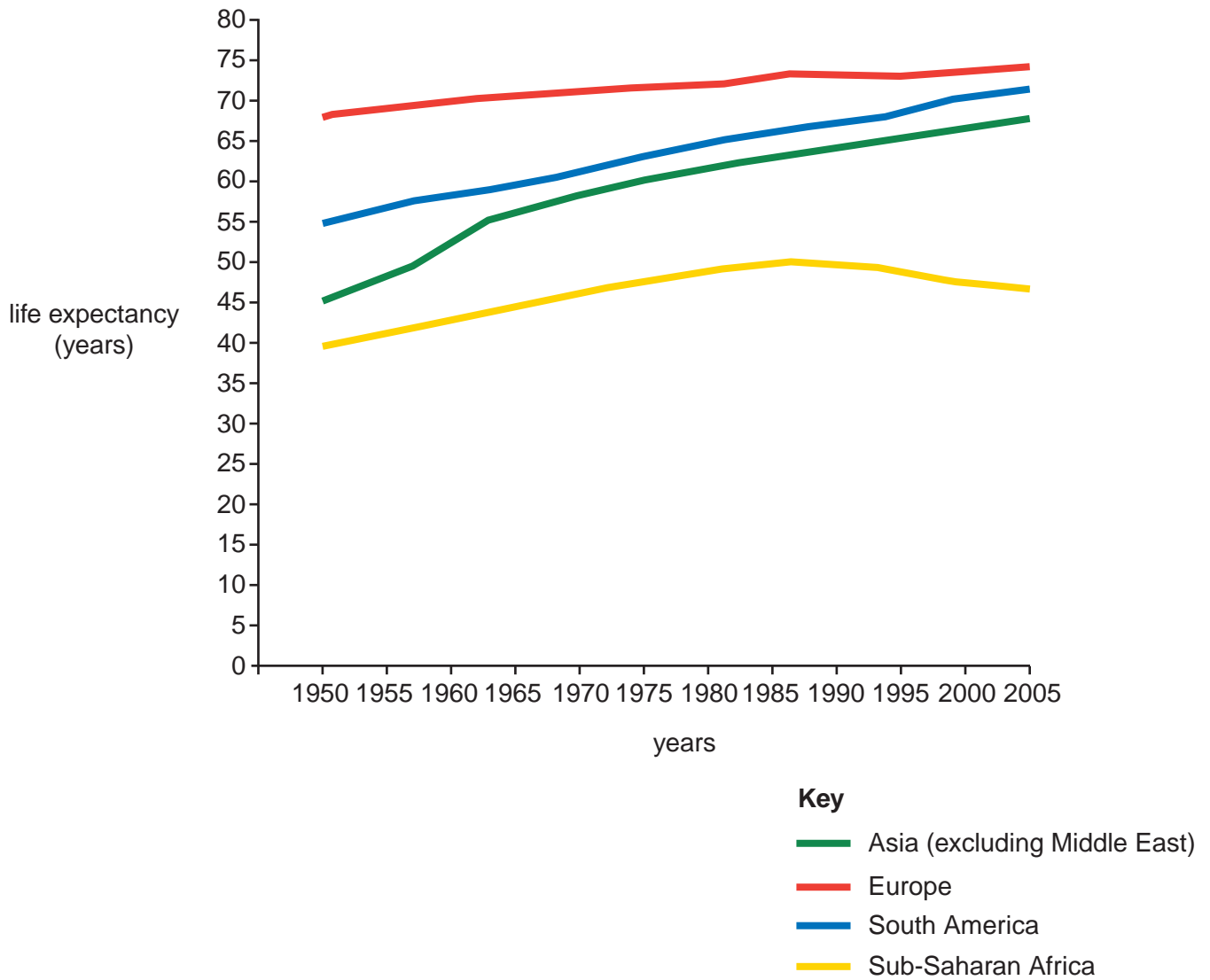


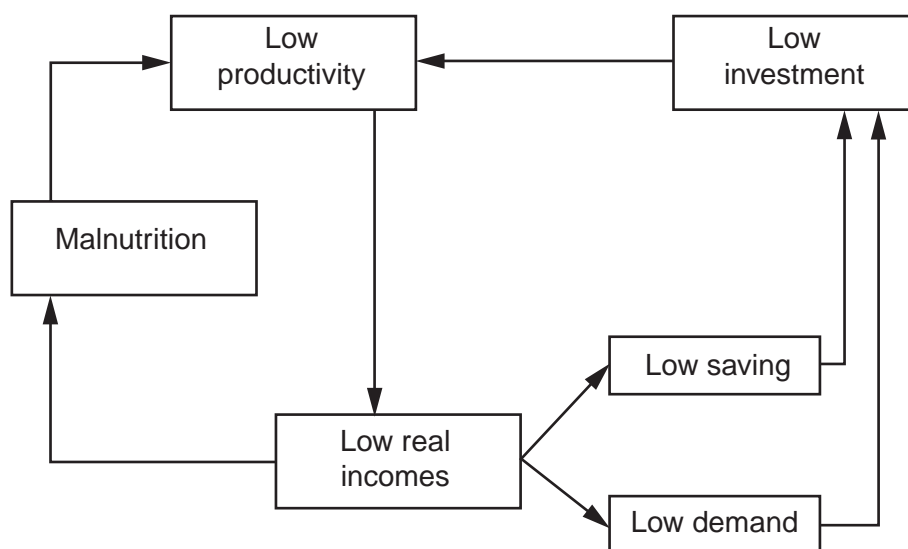
Table 1 for Question 6

**Selected countries ranked by Human Development Index (HDI)
and percentage of the population living on less than US\$1.25 a day in 2008**

Country	HDI Rank	% of population living on less than US\$1.25 a day
Brazil	85	4.3
Indonesia	125	24.6
Morocco	130	2.5
Cambodia	140	28.3
Bangladesh	147	49.6
Cameroon	151	9.6
Tanzania	154	67.9
Uganda	161	28.7
Central African Republic	180	62.8
Niger	186	43.1

Fig. 8 for Question 6

The vicious poverty cycle



BLANK PAGE

BLANK PAGE

Permission to reproduce items where third-party owned material protected by copyright is included has been sought and cleared where possible. Every reasonable effort has been made by the publisher (UCLES) to trace copyright holders, but if any items requiring clearance have unwittingly been included, the publisher will be pleased to make amends at the earliest possible opportunity.

University of Cambridge International Examinations is part of the Cambridge Assessment Group. Cambridge Assessment is the brand name of University of Cambridge Local Examinations Syndicate (UCLES), which is itself a department of the University of Cambridge.