



UNIVERSITY OF CAMBRIDGE INTERNATIONAL EXAMINATIONS
Cambridge International Level 3 Pre-U Certificate
Principal Subject

www.XtremePapers.com

GEOGRAPHY

9768/04

Paper 4 Research Topic

May/June 2011

INSERT

1 hour 30 minutes

READ THESE INSTRUCTIONS FIRST

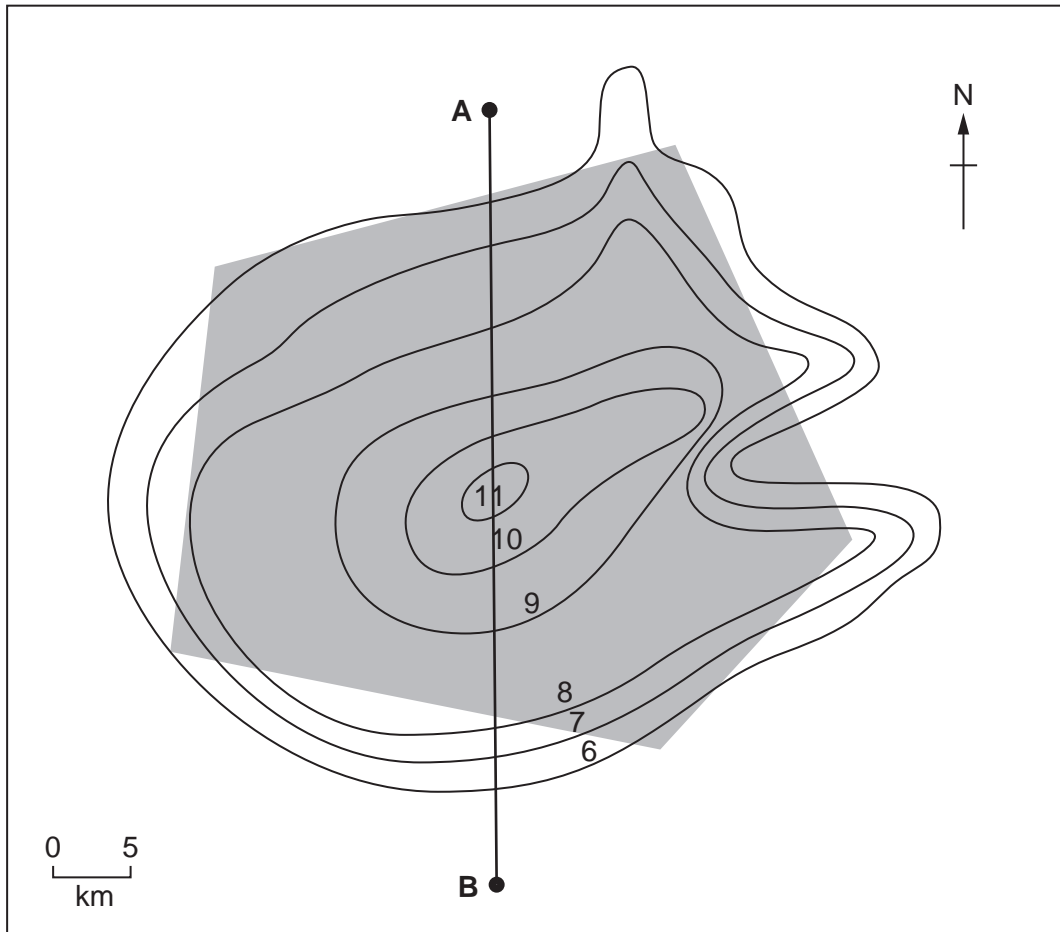
This Insert contains all the Figures referred to in the Question Paper.

This document consists of **12** printed pages and **4** blank pages.




Fig. 1 for Question 1

Mean night time temperatures in a large city and the surrounding rural area in the UK, March 2009



Key

 built-up area

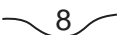
 8 isotherms (°C)

Fig. 2 for Question 1

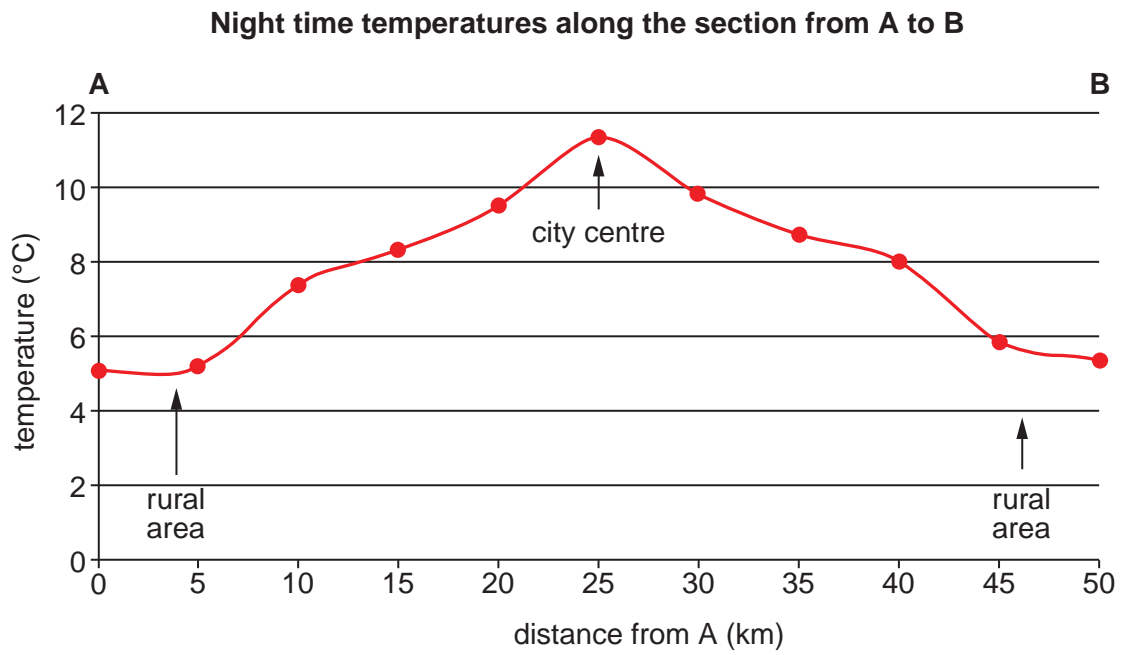


Fig. 3B for Question 1

New York density of vegetation



Fig. 3A for Question 1

New York temperatures

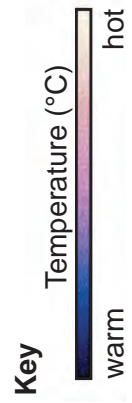
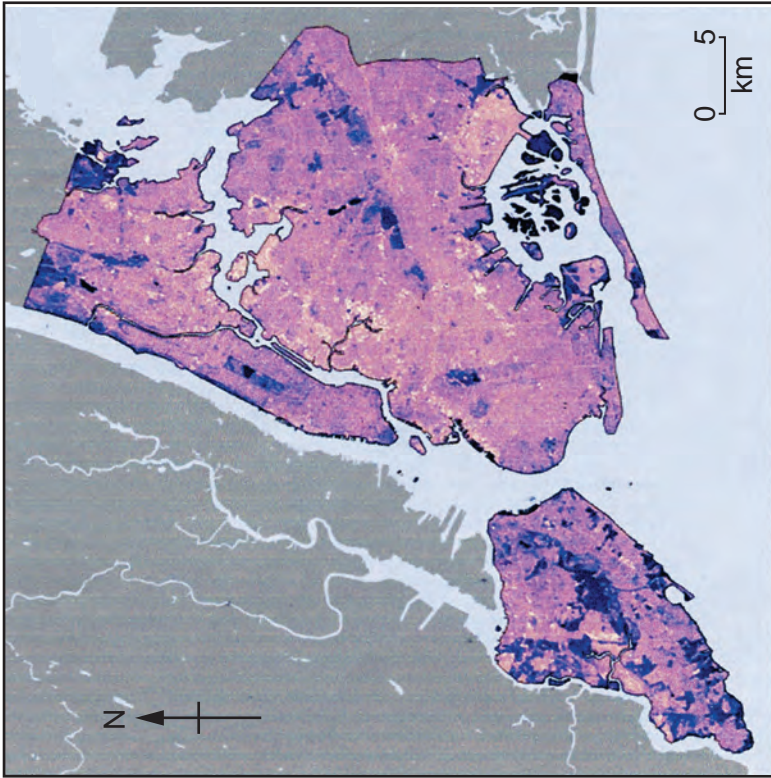


Fig. 3C for Question 1

The boroughs of New York city

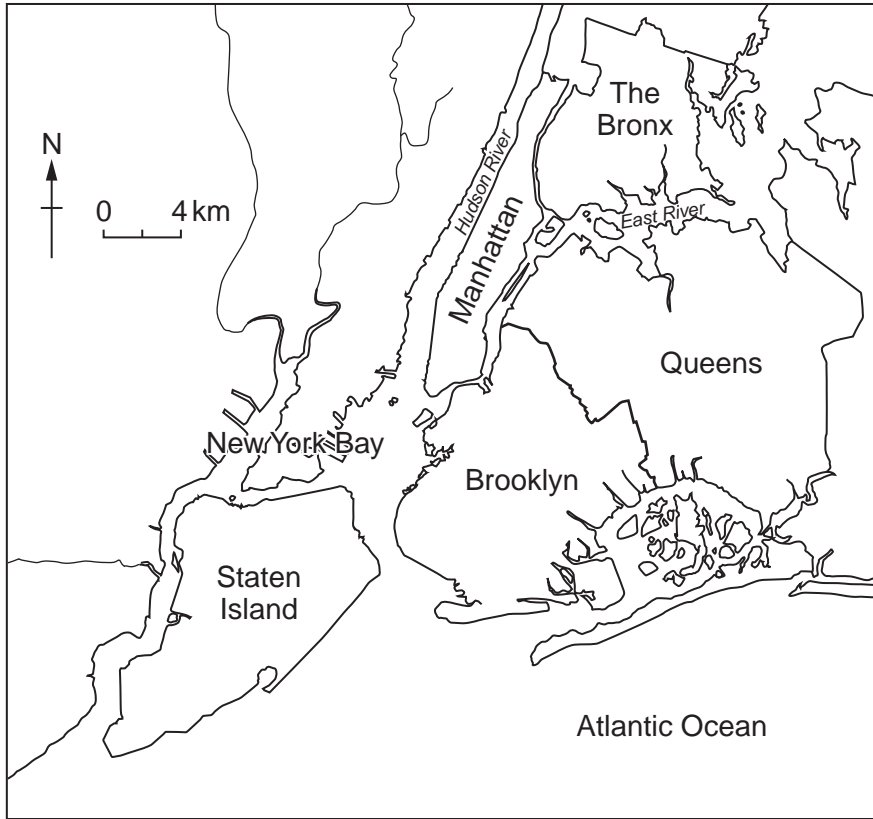


Fig. 4 for Question 2

Wind speed measurements at a suburban shopping centre

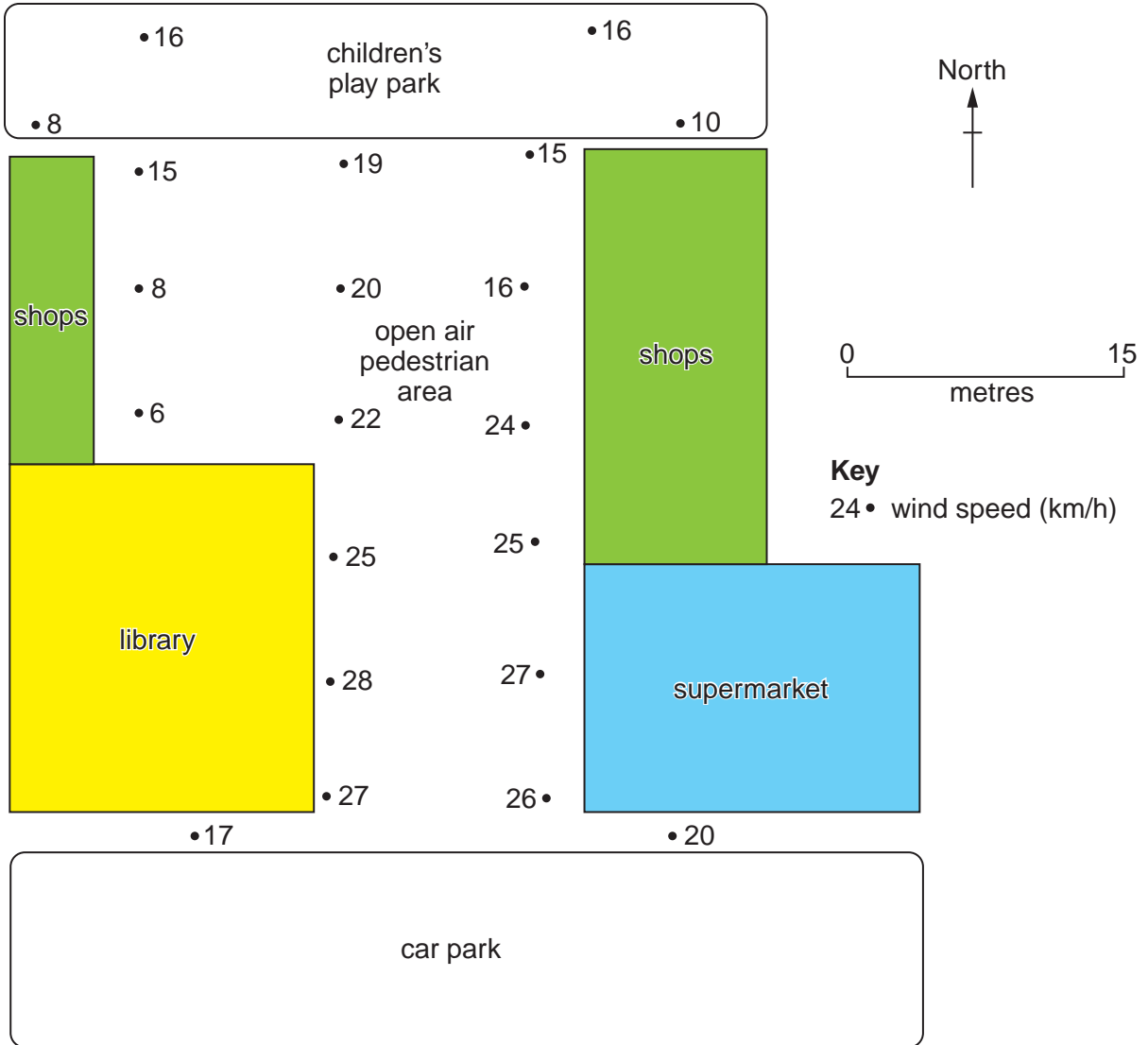
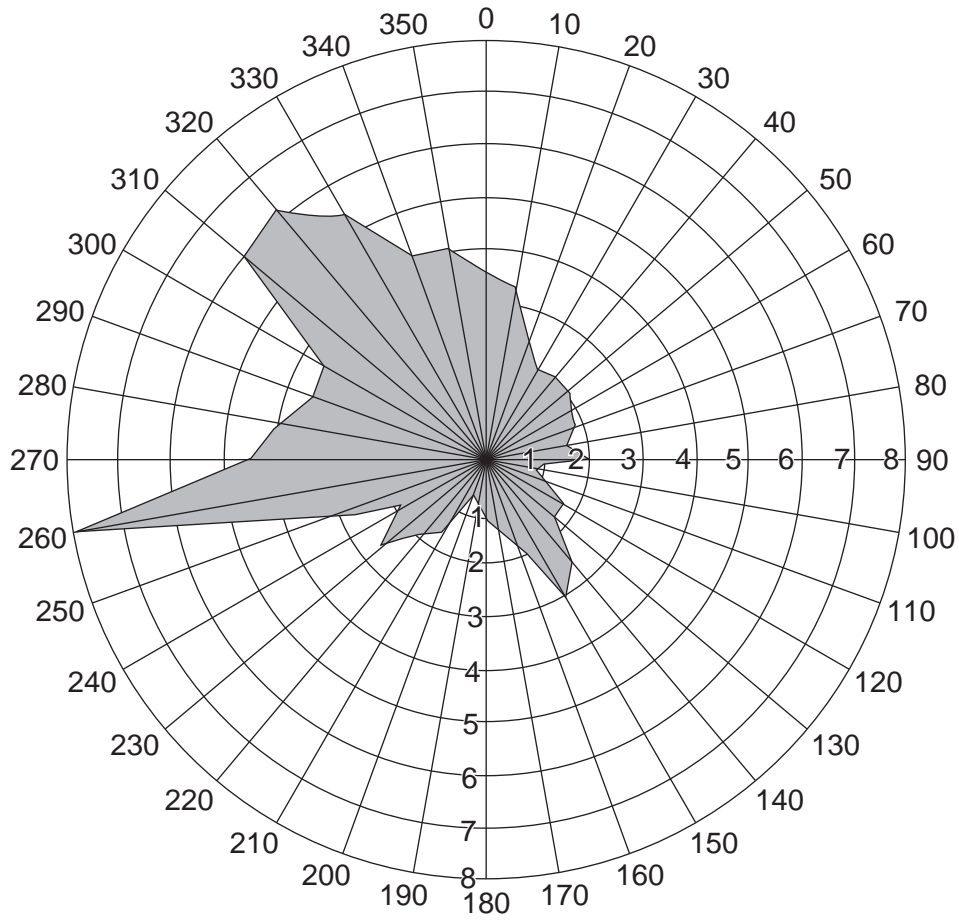


Fig. 5 for Question 5

Port Talbot: direction from which the wind blew, December 2006 – August 2007



Key

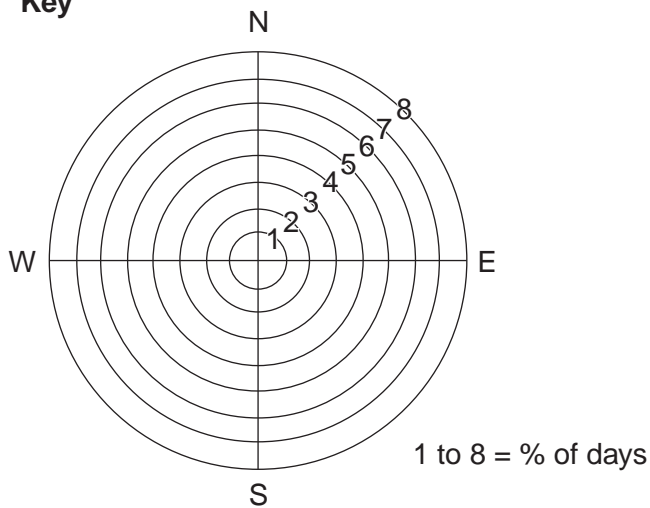
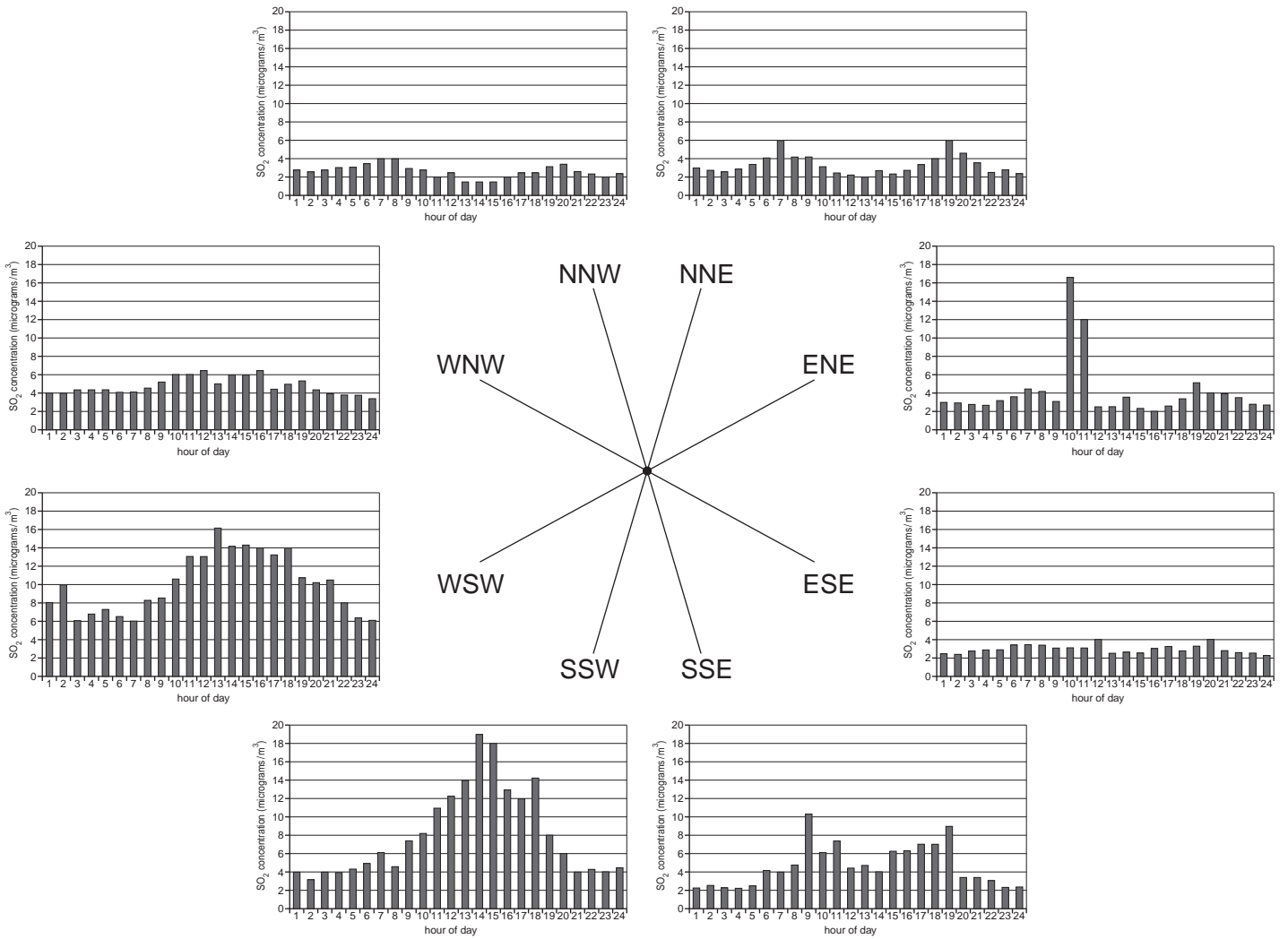


Fig. 6 for Question 5

Hourly sulphur dioxide (SO₂) concentrations for selected wind directions, Port Talbot, December 2006 – August 2007



Key

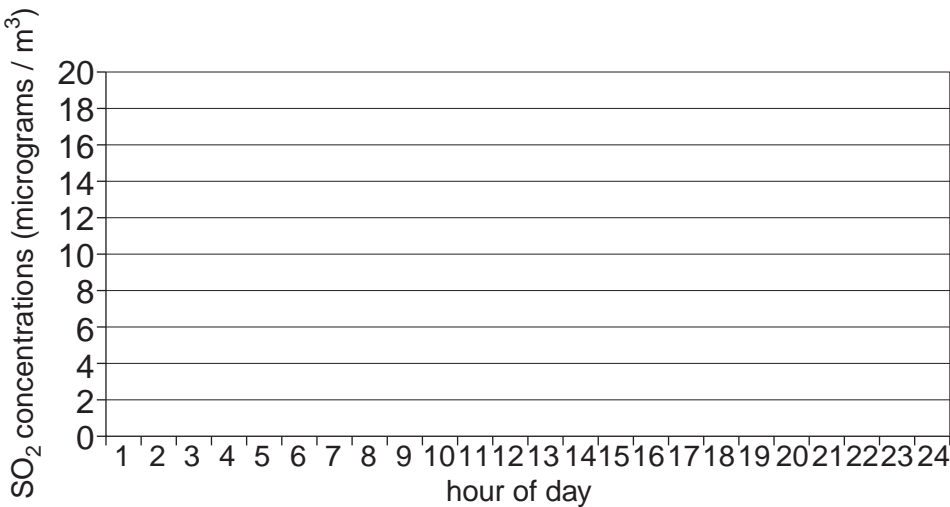
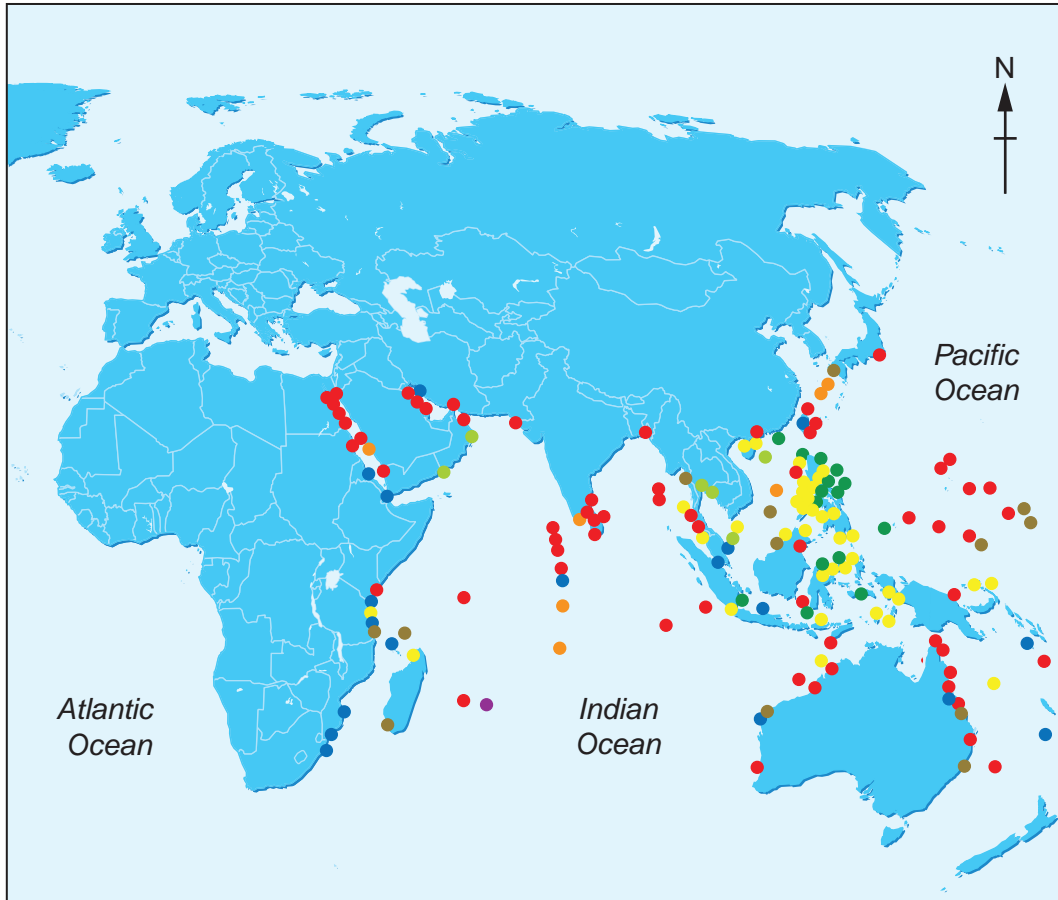


Fig. 7 for Question 6

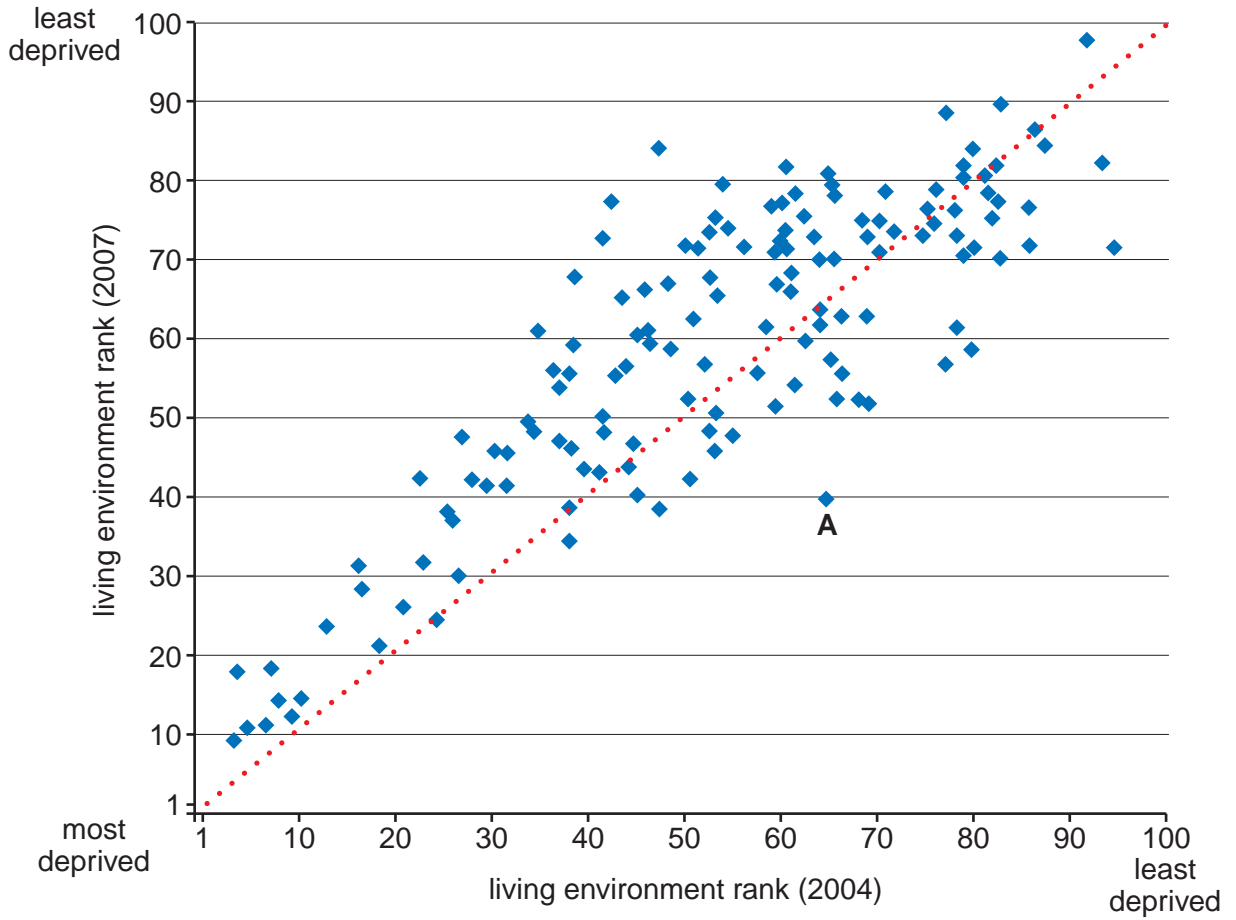
Threats to coral reefs in the Indian and Pacific Oceans

**Key**

- tourism
- poison fishing
- overexploitation
- sedimentation
- coral harvesting
- dynamite fishing
- pollution

Fig. 8 for Question 9

Living environment in different areas of Barnsley, 2004 and 2007



Key
 no change from 2004 to 2007

Fig. 9 for Question 9
Income deprivation in Barnsley, 2007

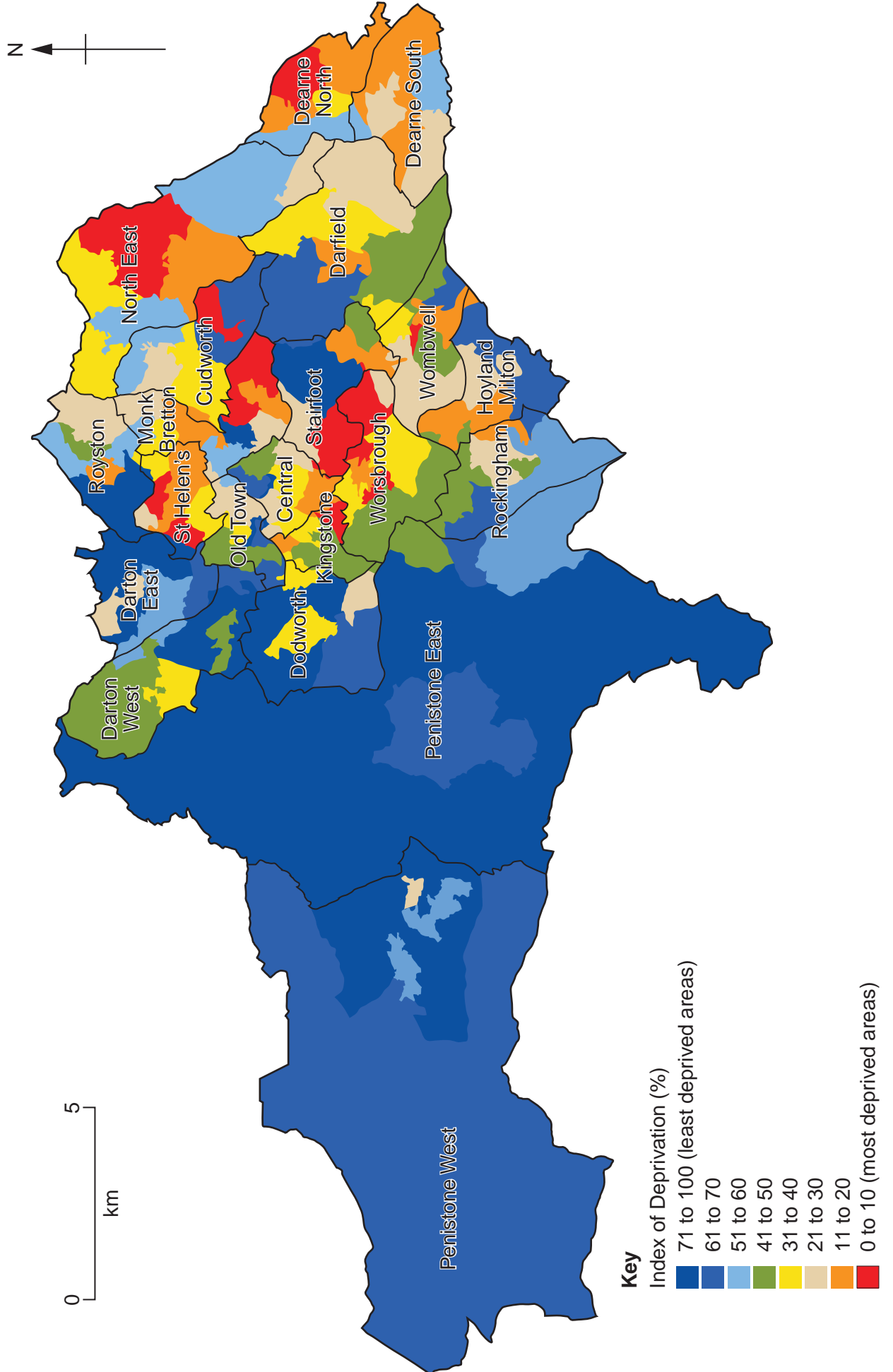


Fig. 10 for Question 10

The most deprived and least deprived areas in regions in England, 2007

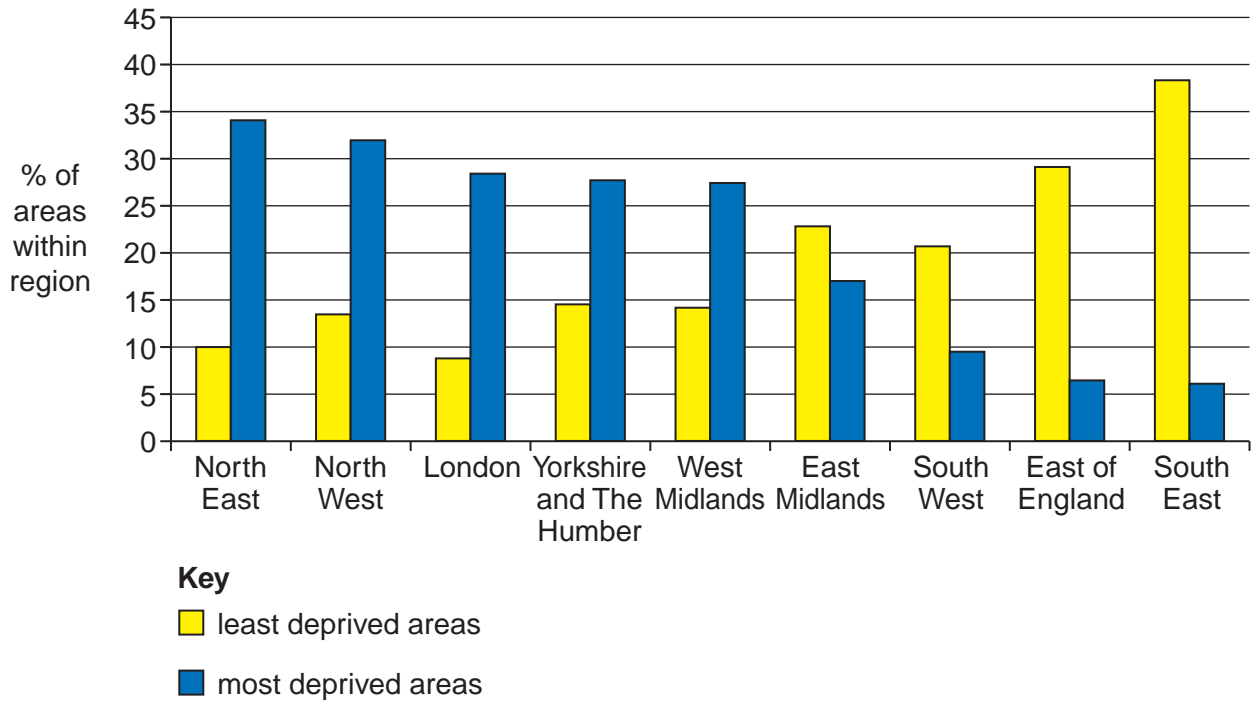


Fig. 11 for Question 10

Regions in the UK



BLANK PAGE

Permission to reproduce items where third-party owned material protected by copyright is included has been sought and cleared where possible. Every reasonable effort has been made by the publisher (UCLES) to trace copyright holders, but if any items requiring clearance have unwittingly been included, the publisher will be pleased to make amends at the earliest possible opportunity.

University of Cambridge International Examinations is part of the Cambridge Assessment Group. Cambridge Assessment is the brand name of University of Cambridge Local Examinations Syndicate (UCLES), which is itself a department of the University of Cambridge.