



UNIVERSITY OF CAMBRIDGE INTERNATIONAL EXAMINATIONS
Cambridge International Level 3 Pre-U Certificate
Principal Subject

www.XtremePapers.com

GEOGRAPHY

9768/01

Paper 1 Geographical Issues

May/June 2011

INSERT

2 hours 30 minutes

READ THESE INSTRUCTIONS FIRST

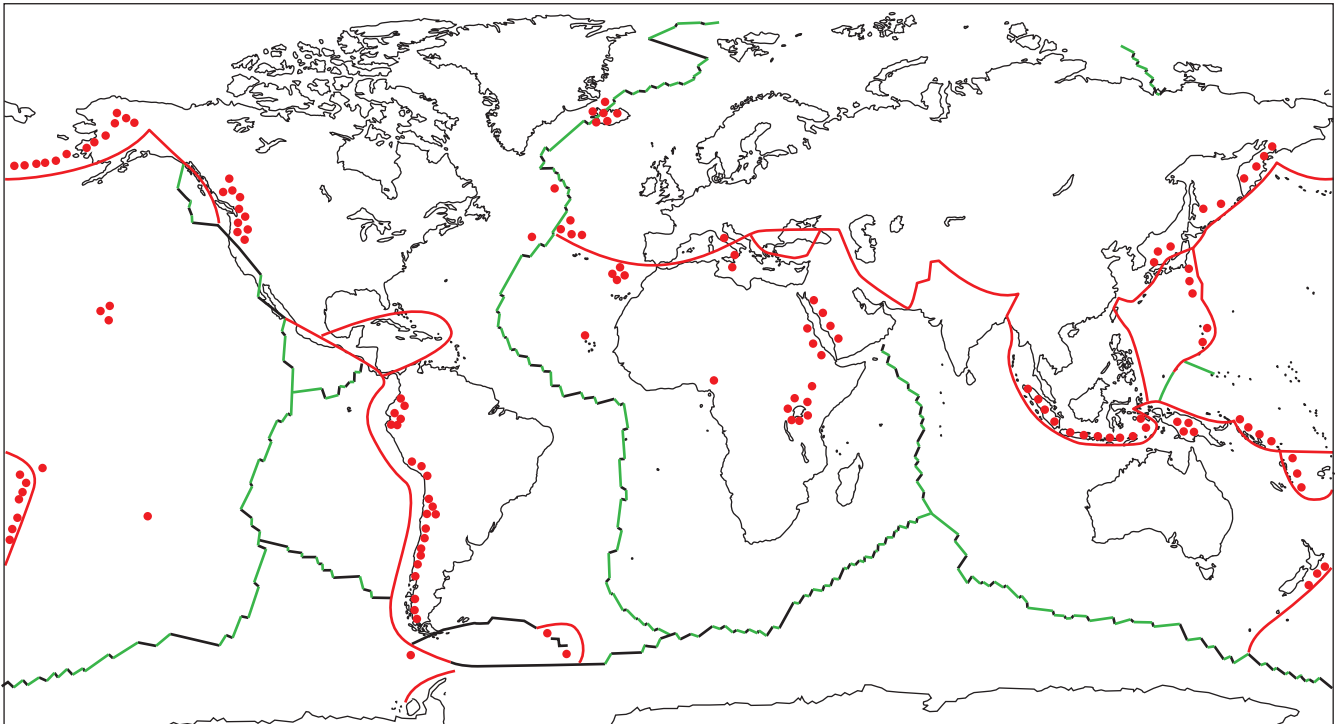
This Insert contains all the Figures and Tables, and the Photograph, referred to in the questions.

This document consists of **8** printed pages.



Fig. 1 for Question 1

The global distribution of active volcanoes and plate boundaries



- Key**
- destructive plate boundary
 - constructive plate boundary
 - conservative plate boundary
 - active volcano

Fig. 2 for Question 2

Track and strength of selected tropical storms and tropical cyclones (hurricanes), 1996–2005

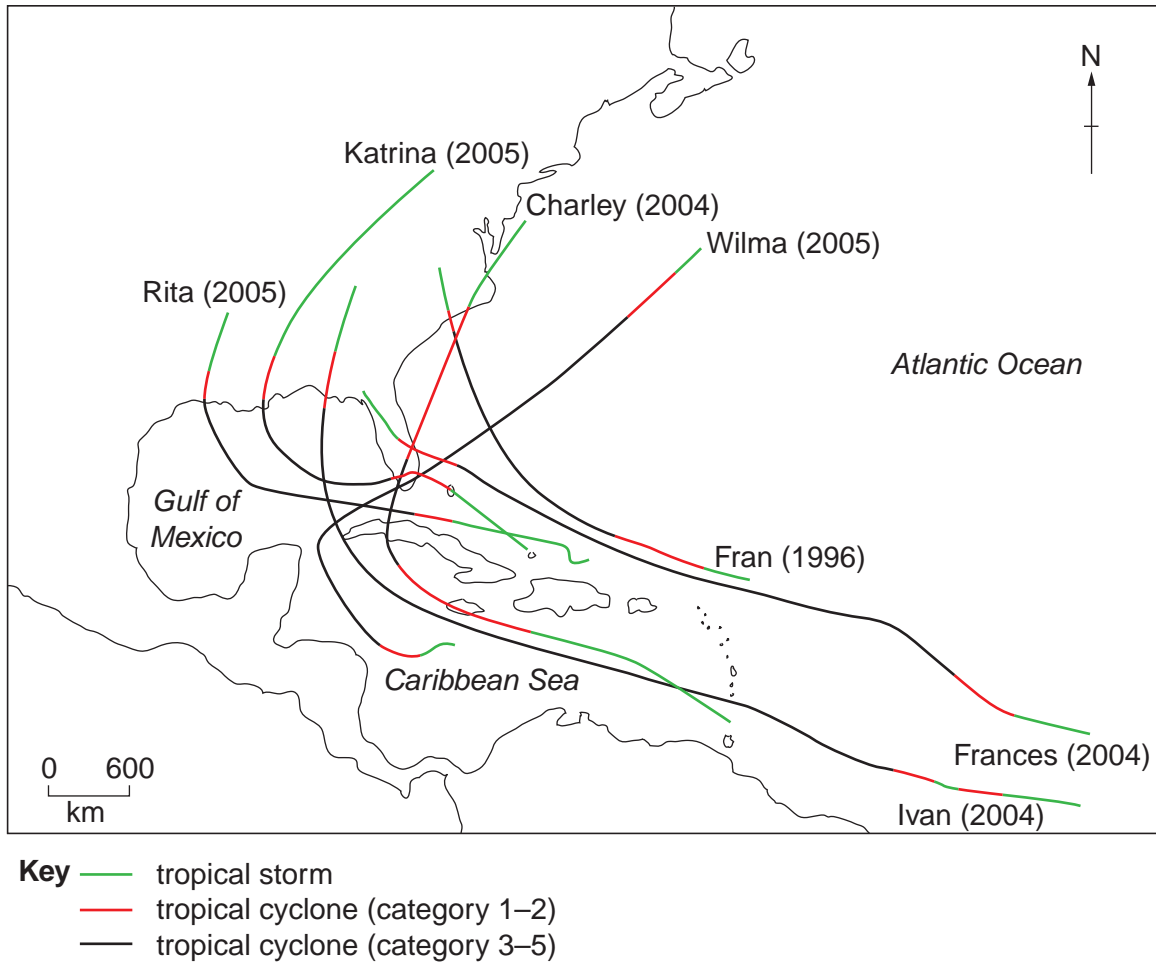
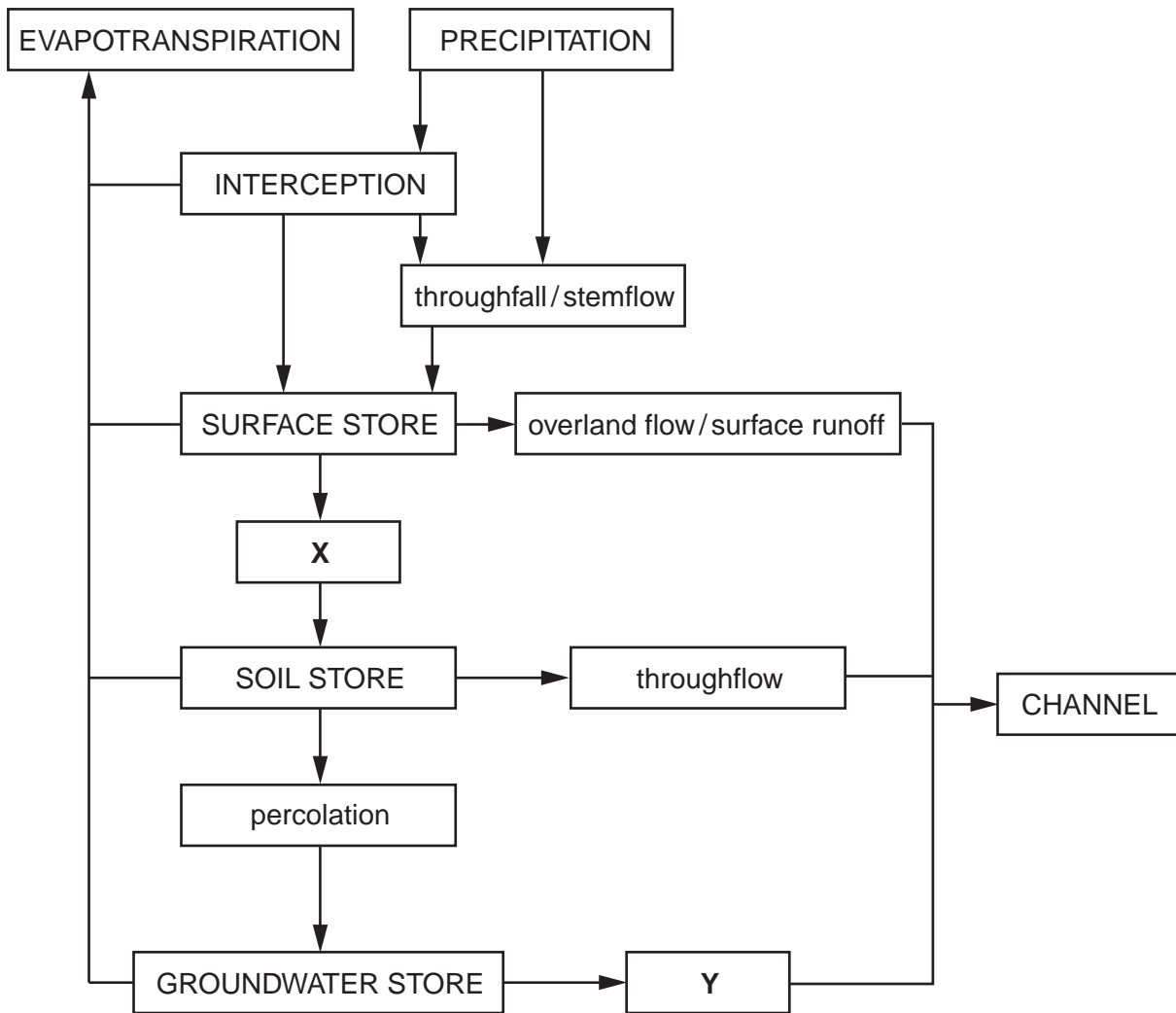


Fig. 3 for Question 3

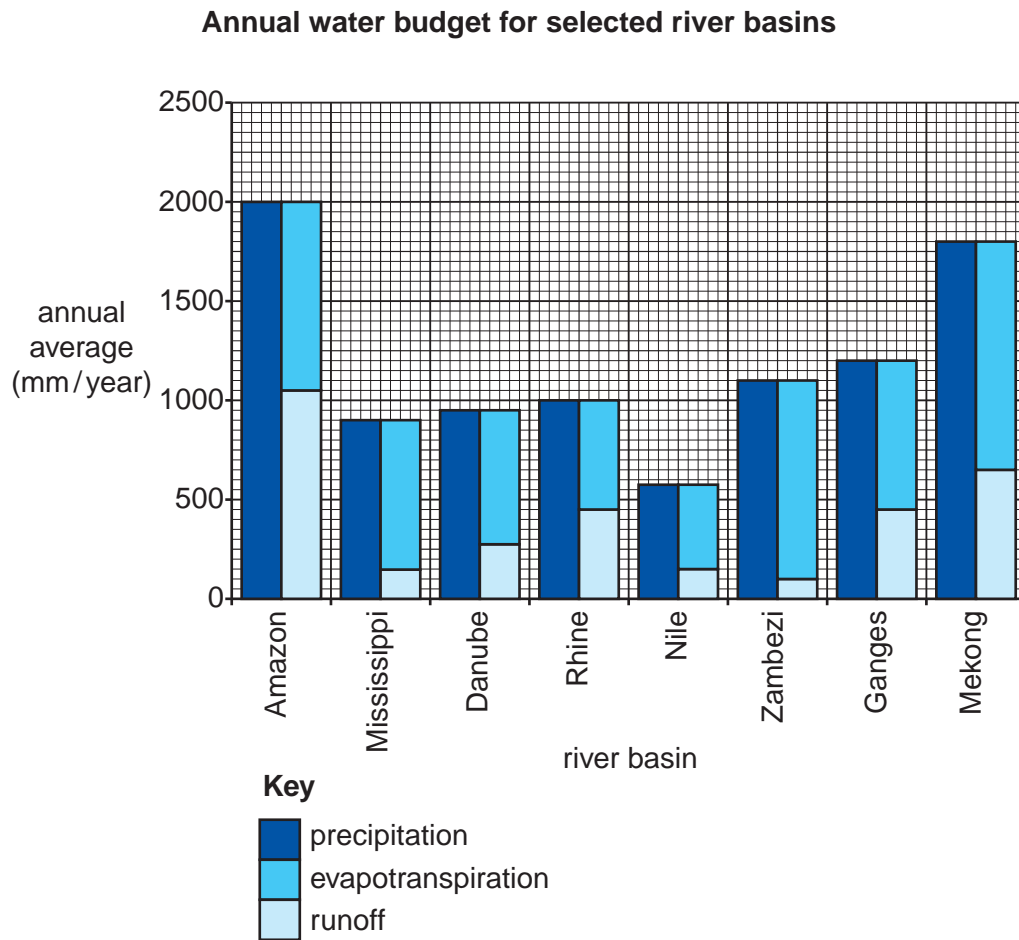
The main components of a drainage basin hydrological cycle

**Key**

INTERCEPTION store

percolation flow (transfer)

Fig. 4 for Question 3



Photograph A for Question 4

Target hardening in a housing development



Table 1 for Question 4

Perceived likelihood of being the victim of crime in the UK according to accommodation type and household income

Table shows percentage of respondents saying 'very likely' or 'fairly likely'.

Accommodation type:	Crime		
	Burglary	Car crime	Violent crime
Detached housing	14	18	10
Semi-detached housing	18	25	18
Terraced housing	18	28	20
Flats/maisonettes	16	27	24
Total annual household income (£):			
less than 10 000	22	30	23
10 000–19 999	16	23	18
20 000–29 999	16	26	17
30 000–39 999	16	24	18
40 000–49 999	12	23	16
50 000 or more	14	21	12

Figs 5A and Fig. 5B for Question 5

Confirmed cases of H1N1 (swine flu), by country, 2009

Fig. 5A
3 May

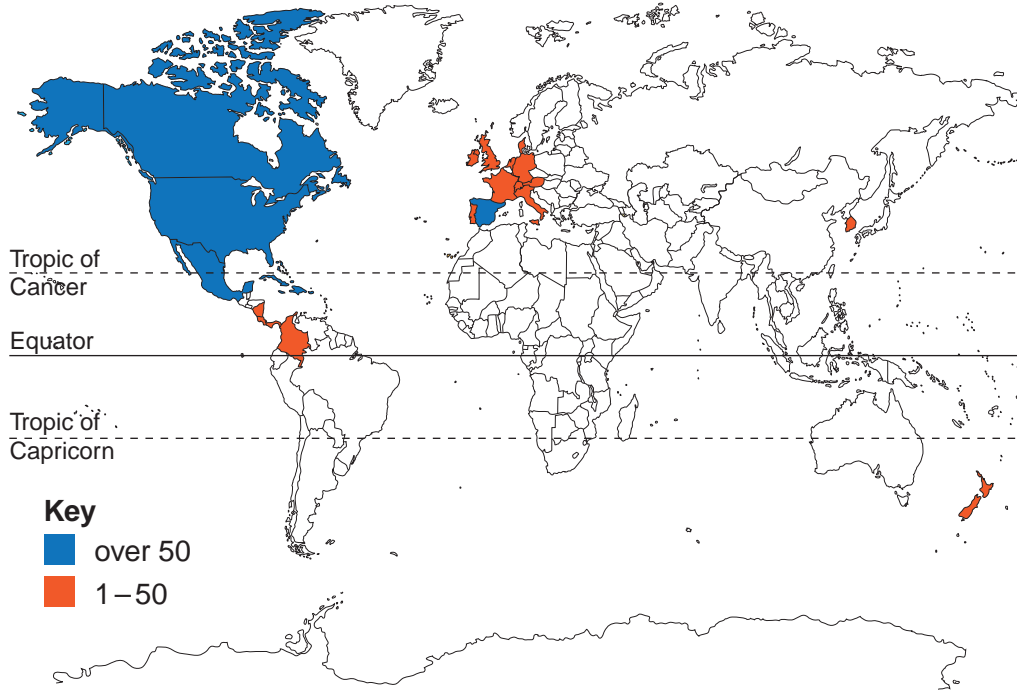


Fig. 5B
4 June

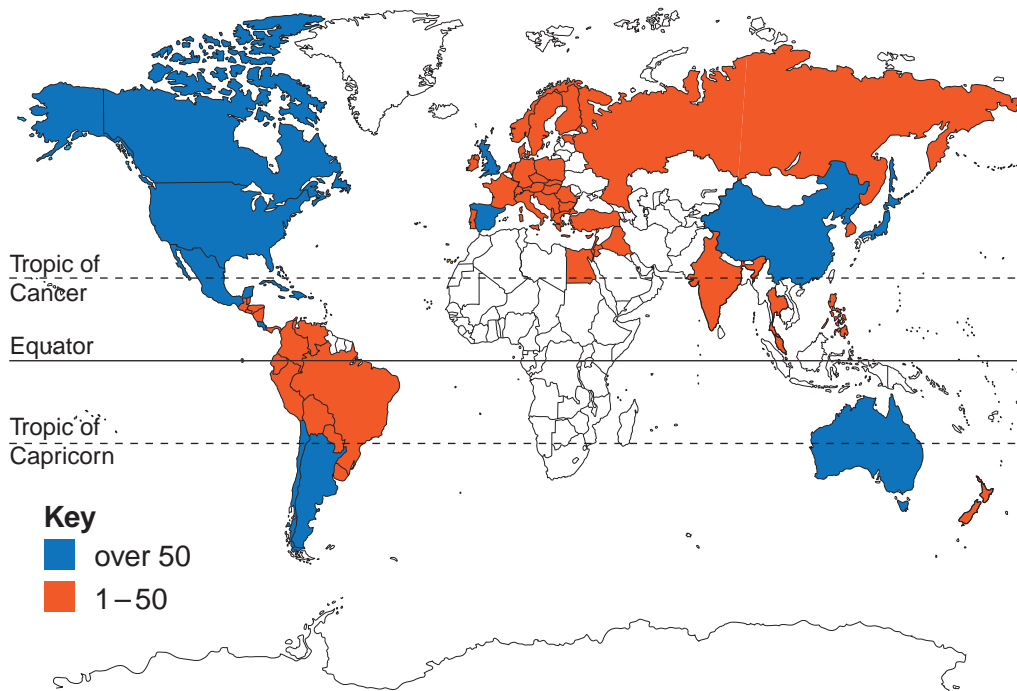


Fig. 6 for Question 6

Changes in the Human Development Index (HDI) by world region, 1975–2005

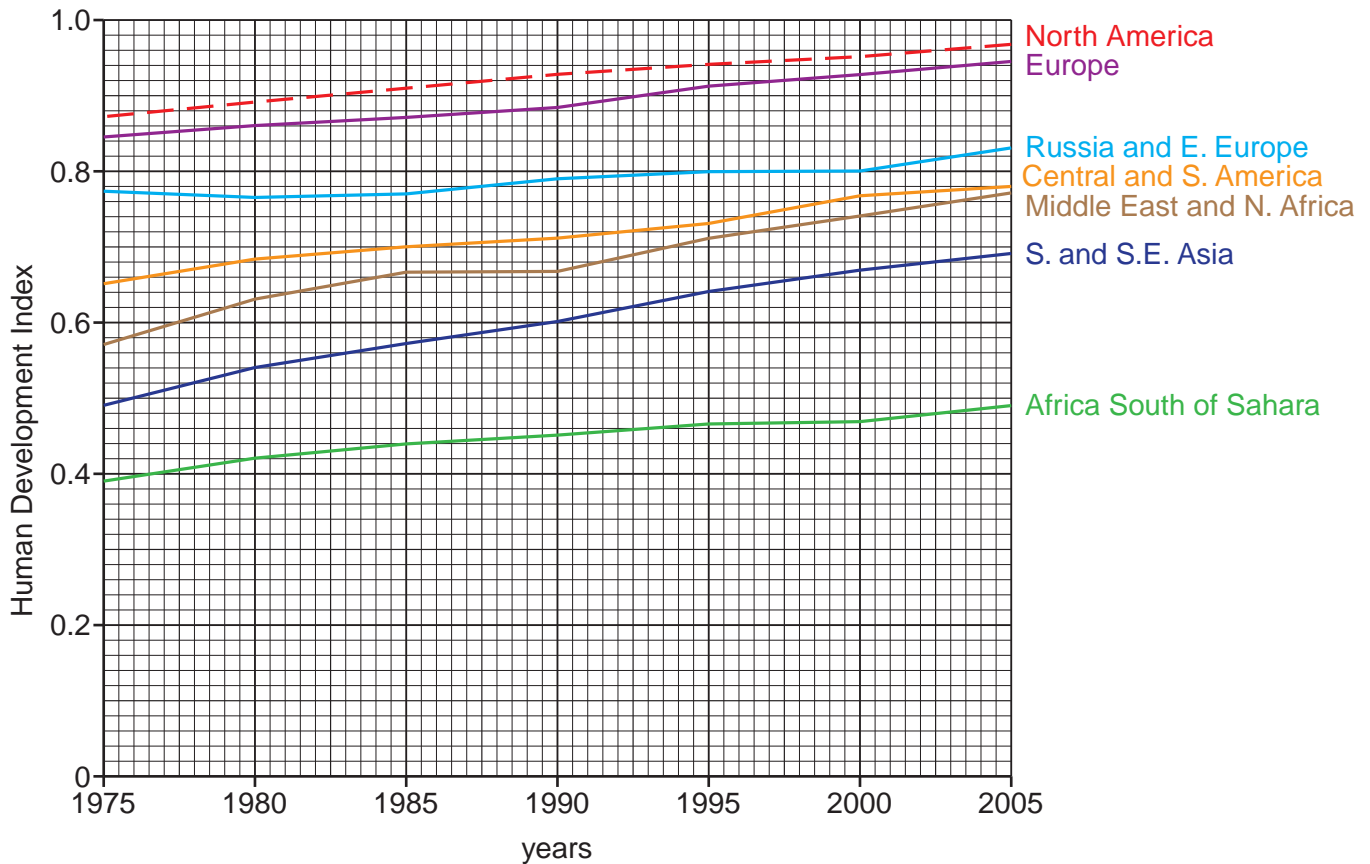


Table 2 for Question 6

Changes in the HDI for three newly industrialised countries (NIC), 1975–2005

Country	1975	1985	1995	2005
D	0.713	0.785	0.861	0.921
E	0.615	0.679	0.745	0.781
F	0.619	0.696	0.703	0.811

Permission to reproduce items where third-party owned material protected by copyright is included has been sought and cleared where possible. Every reasonable effort has been made by the publisher (UCLES) to trace copyright holders, but if any items requiring clearance have unwittingly been included, the publisher will be pleased to make amends at the earliest possible opportunity.

University of Cambridge International Examinations is part of the Cambridge Assessment Group. Cambridge Assessment is the brand name of University of Cambridge Local Examinations Syndicate (UCLES), which is itself a department of the University of Cambridge.