

**B O A R D O F S T U D I E S**  
NEW SOUTH WALES

**2008**

**HIGHER SCHOOL CERTIFICATE  
EXAMINATION**

# Textiles and Design

## General Instructions

- Reading time – 5 minutes
- Working time – 1½ hours
- Write using black or blue pen
- Write your Centre Number and Student Number at the top of pages 5, 7, and 9

## Total marks – 50

**Section I** Pages 2–4

### 10 marks

- Attempt Questions 1–10
- Allow about 15 minutes for this section

**Section II** Pages 5–10

### 25 marks

- Attempt Questions 11–13
- Allow about 45 minutes for this section

**Section III** Page 11

### 15 marks

- Attempt either Question 14 or Question 15
- Allow about 30 minutes for this section

## Section I

10 marks

Attempt Questions 1–10

Allow about 15 minutes for this section

Use the multiple-choice answer sheet for Questions 1–10.

---

- 1 In the first wash the colour from a green shirt bleeds onto a white pillowcase.
- Which step of the dyeing process has mostly contributed to this fault?
- (A) Absorption
  - (B) Agitation
  - (C) Fixation
  - (D) Migration
- 2 A t-shirt with a designer logo displayed on it is an example of which aspect of marketing?
- (A) Product planning
  - (B) Promotion strategy
  - (C) Product specification
  - (D) Place and distribution channels
- 3 Fashion designers use celebrities to successfully promote their designs.
- Of which external factor is this an example?
- (A) Economic
  - (B) Political
  - (C) Social
  - (D) Technological

- 4 In response to changing consumer demands for improved sun protection, what features should fashion designers include in their designs?
- (A) Body coverage and absorbency
  - (B) Light-resistant fabric and body coverage
  - (C) Ultra Protection Factor rated fabric and durability
  - (D) Ultra Protection Factor rated fabric and body coverage
- 5 Why would a textile garment manufacturer introduce a computer-linked sewing machine into its production operation?
- (A) To improve garment construction and save time
  - (B) To improve garment construction and distribution channels
  - (C) To improve fabric performance and save time
  - (D) To improve fabric performance and distribution channels
- 6 Originally cotton singlets were worn as underwear. However, in contemporary society the cotton singlet may be worn as outerwear.
- This evolution in function is an example of
- (A) globalisation of design.
  - (B) emerging textile technologies.
  - (C) historical design development.
  - (D) technological advances in manufacturing.
- 7 The impact of innovations and technological advances in machinery on garment manufacture has resulted in which of the following?
- (A) Tariff protection
  - (B) Consistent quality
  - (C) Increased wastage
  - (D) Reduced consumer choice

- 8** Which method of fabric decoration could be used to produce a textured, multicoloured motif on a black canvas jacket?
- (A) Heat setting
  - (B) Resist dyeing
  - (C) Digital imaging
  - (D) Machine embroidery
- 9** A nylon/elastomeric fibre, multifilament yarn and tricot warp knit structure would be the most suitable fabric to produce which of the following items?
- (A) Business suits
  - (B) School uniforms
  - (C) Beach umbrellas
  - (D) Competitive swimwear
- 10** Textile products in the global marketplace have become more directly available and accessible to the consumer.

Which of the following has made the greatest contribution to this?

- (A) Internet shopping and improved distribution channels
- (B) Off-shore manufacturing and increased credit card security
- (C) Extended trading hours and automatic teller machines (ATM)
- (D) International competition and Electronic Funds Transfer at Point of Sale (EFTPOS) facilities

# Textiles and Design

--	--	--	--	--

Centre Number

## Section II

--	--	--	--	--	--	--	--	--

Student Number

25 marks

Attempt Questions 11–13

Allow about 45 minutes for this section

Answer the questions in the spaces provided.

Marks

**Question 11 — Australian Textile, Clothing, Footwear and Allied Industries**  
(5 marks)

- (a) A new designer is developing an innovative sportswear range. **2**

Identify a target market and ONE aspect of product planning the designer would need to consider.

.....

.....

.....

.....

- (b) How would the manufacturing choices of this sportswear designer be affected by the current restructuring of the Australian Textile, Clothing, Footwear and Allied Industries? **3**

.....

.....

.....

.....

.....

.....

.....

.....

.....

BLANK PAGE

--	--	--	--	--

Centre Number

Section II (continued)

--	--	--	--	--	--	--	--	--

Student Number

**Marks**

**Question 12 — Design** (10 marks)

- (a) (i) Identify a method of textile printing suitable for producing a multicoloured design on a one-metre length of fabric. **1**

.....

- (ii) What is an advantage of using this method? **1**

.....

.....

.....

- (b) Outline the steps in the printing process you have identified in part (a) (i). **3**

.....

.....

.....

.....

.....

.....

.....

.....

**Question 12 continues on page 8**

Question 12 (continued)

- (c) Historically, design development has influenced consumer choices. **5**

In relation to ONE focus area, explain how the historical development of textile products has influenced consumer choices.

.....

.....

.....

.....

.....

.....

.....

.....

.....

.....

.....

.....

.....

.....

.....

**End of Question 12**



--	--	--	--	--

Centre Number

Section II (continued)

--	--	--	--	--	--	--	--	--	--

Student Number

Marks

Question 13 — Properties and Performance of Textiles (10 marks)

Use the following diagrams to answer Question 13.



Diagram 1

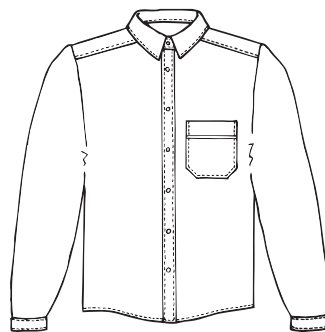


Diagram 2

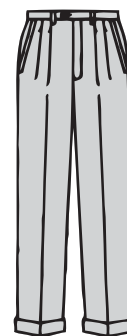


Diagram 3

- (a) (i) Name an end-use application for the three piece coordinated garment range in diagrams 1, 2 and 3. 1

.....

- (ii) With reference to diagram 2, what fibre content would you recommend to ensure the comfort of the wearer? 1

.....

.....

Question 13 continues on page 10

Question 13 (continued)

- (b) What fibre content, yarn and fabric structure would be suitable for the garments in diagrams 1 and 3? 4

Justify these choices in relation to the end-use application identified in part (a) (i).

.....

.....

.....

.....

.....

.....

.....

.....

.....

.....

.....

.....

.....

.....

.....

.....

.....

.....

.....

.....

.....

.....

- (c) Identify and describe the types of advanced machinery that can be used in the manufacture of the garment range. 4

.....

.....

.....

.....

.....

.....

.....

.....

.....

.....

.....

.....

.....

.....

.....

.....

.....

.....

.....

.....

.....

.....

**End of Question 13**

## Textiles and Design

### Section III

15 marks

Attempt either Question 14 or Question 15

Allow about 30 minutes for this section

Answer the question in a writing booklet. Extra writing booklets are available.

---

	<b>Marks</b>
<b>Question 14 — Design</b> (15 marks)	
(a) Name a culture you have studied and identify a traditional textile production method or textile art form of this culture.	<b>3</b>
Describe how this production method or art form has been adapted for use in contemporary society.	
(b) Describe how fabric decoration has been used as a medium of self-expression and/or communication in the textile art form of the culture you have named in part (a).	<b>4</b>
(c) Analyse how the religious practices and workers' skills and status in your chosen culture have influenced the development of the textile production method or textile art form named in part (a).	<b>8</b>

**OR**

### **Question 15 — Properties and Performance of Textiles** (15 marks)

(a) Identify a soil-resistant finishing technique and describe how it is applied to fibre, yarn and/or fabric.	<b>3</b>
(b) Describe the advantages and disadvantages of using a soil-resistant finish on the upholstery fabric of office furniture.	<b>4</b>
(c) Name a finishing innovation that has a purpose other than soil-resistance, and analyse its impact on fabric performance and the consumer.	<b>8</b>

**End of paper**

BLANK PAGE