

B O A R D O F S T U D I E S
NEW SOUTH WALES

2007

**HIGHER SCHOOL CERTIFICATE
EXAMINATION**

Textiles and Design

General Instructions

- Reading time – 5 minutes
- Working time – 1½ hours
- Write using black or blue pen
- Write your Centre Number and Student Number at the top of pages 5, 7 and 9

Total marks – 50

Section I Pages 2–4

10 marks

- Attempt Questions 1–10
- Allow about 15 minutes for this section

Section II Pages 5–10

25 marks

- Attempt Questions 11–13
- Allow about 45 minutes for this section

Section III Page 11

15 marks

- Attempt either Question 14 or Question 15
- Allow about 30 minutes for this section

Section I

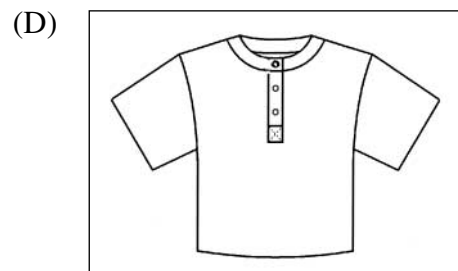
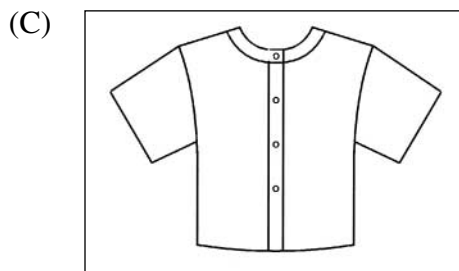
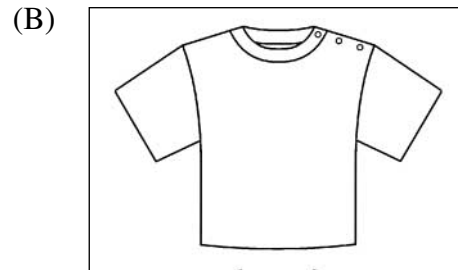
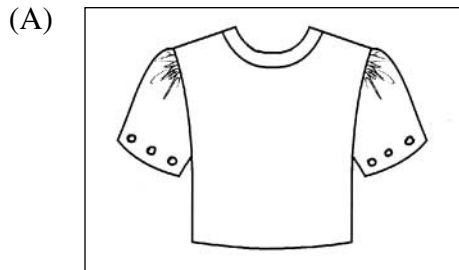
10 marks

Attempt Questions 1–10

Allow about 15 minutes for this section

Use the multiple-choice answer sheet for Questions 1–10.

1 Which of the following designs uses buttons as an aesthetic feature?



2 Which fibre is most suitable for children's clothing due to its high absorbency and comfort properties?

- (A) Nylon
- (B) Cotton
- (C) Polyester
- (D) Microfibre

3 The work of designers is influenced by the staff expertise, facilities and finance available.

What are these factors best described as?

- (A) Ecological factors
- (B) External factors
- (C) Internal factors
- (D) Social factors

- 4** Which of the following has increased consumer demand for clothing produced from organic sources?
- (A) Affordability
 - (B) Globalisation
 - (C) Environmental concern
 - (D) Government legislation
- 5** Which of the following have the greatest influence on the creative work of costume designers?
- (A) Technology and globalisation
 - (B) Self-expression and pollution
 - (C) Climate change and globalisation
 - (D) Resources available and self-expression
- 6** Which of the following need to be considered in planning a marketing strategy for a new line of lightweight denim?
- (A) Personnel, price structure and promotion strategies
 - (B) Price structure, product planning and political strategies
 - (C) Production life cycle, price structure and personnel
 - (D) Product planning, price structure and promotion strategies
- 7** Which of the following is an essential textile finish used in the production of theatre stage curtains?
- (A) Fire-retardance
 - (B) Mercerisation
 - (C) Sanforisation
 - (D) Soil resistance
- 8** What is the most suitable fibre, yarn, and fabric structure for sports socks?
- (A) Nylon, filament, single-knit
 - (B) Rayon, staple yarn, tricot knit
 - (C) Polyester, filament, double-knit
 - (D) Cotton, staple yarn, circular knit

- 9** A geometric graphic using six colours has been designed to be reproduced onto 500 fabric banners.

Which type of printing procedure will give the quickest, most accurate, and most cost-effective result?

- (A) Block
- (B) Digital
- (C) Roller
- (D) Screen

- 10** There has been considerable research into and development of high performance textiles for active sportswear.

On which of the following has this research and development had the greatest impact?

- (A) Consumers and manufacturers
- (B) Employees and the environment
- (C) Environmental and economic concerns
- (D) Political demands and consumer trends

Textiles and Design

--	--	--	--	--

Centre Number

Section II

--	--	--	--	--	--	--	--	--

Student Number

25 marks

Attempt Questions 11–13

Allow about 45 minutes for this section

Answer the questions in the spaces provided.

Marks

Question 11 — Australian Textiles, Clothing, Footwear and Allied Industries
(5 marks)

(a) (i) Identify ONE example of a used or waste material that can be recycled into a new textile product. **1**

.....

(ii) Name a new textile product that can be made from this used or waste material. **1**

.....

(b) A marketing strategy for a textile product is to be developed.

(i) Identify a suitable distribution channel. **1**

.....

.....

(ii) Identify TWO factors which determine price structure. **2**

.....

.....

.....

.....

BLANK PAGE

Textiles and Design

--	--	--	--	--

Centre Number

Section II (continued)

--	--	--	--	--	--	--	--	--

Student Number

Question 12 — Design (10 marks)

Marks

Answer part (a) and part (b) in relation to a specific culture you have studied:

Chosen culture

- (a) Describe how the traditional textiles of your chosen culture are used as a medium for self-expression and communication between people. **2**

.....

.....

.....

.....

.....

.....

- (b) Explain how geographic location and resource availability influence the design of textiles in your chosen culture. **3**

.....

.....

.....

.....

.....

.....

.....

.....

.....

Question 12 continues on page 8

Question 12 (continued)

(c) Explain the principles used in the process of textile dyeing.

5

.....

.....

.....

.....

.....

.....

.....

.....

.....

.....

.....

.....

.....

.....

.....

End of Question 12

--	--	--	--	--

Centre Number

Section II (continued)

--	--	--	--	--	--	--	--	--

Student Number

Marks

Question 13 — Properties and Performance of Textiles (10 marks)

- (a) Identify a fibre and fabric structure suitable for the manufacture of bed sheets. **2**

.....
.....
.....

- (b) Explain why a 100% wool, spun yarn, single knit would be suitable for thermal underwear. **3**

.....
.....
.....
.....
.....
.....
.....
.....
.....
.....

Question 13 continues on page 10

Question 13 (continued)

- (c) Identify ONE textile innovation that produces a decorative technique to enhance the design of a textile. **5**

Explain the process involved and describe the final textile product.

.....

.....

.....

.....

.....

.....

.....

.....

.....

.....

.....

.....

.....

.....

.....

.....

End of Question 13

Textiles and Design

Section III

15 marks

Attempt either Question 14 or Question 15

Allow about 30 minutes for this section

Answer the question in a writing booklet. Extra writing booklets are available.

	Marks
Question 14 — Design (15 marks)	
(a) Describe TWO historical design developments from a textile focus area of your choice.	5
(b) For each of the TWO historical design developments described in part (a), analyse their influence on contemporary society.	10

OR

Question 15 — Properties and Performance of Textiles (15 marks)

(a) Describe recent technological advances in machinery used in the textiles industry.	5
(b) Evaluate the impact these technological advances in machinery have had on the changing nature of the textiles industry.	10

End of paper

BLANK PAGE