



--	--	--	--	--

Centre Number

--	--	--	--	--	--	--	--	--	--

Student Number

**2001**  
**HIGHER SCHOOL CERTIFICATE**  
**EXAMINATION**

# Music 2

## Musicology and Aural Skills

### General Instructions

- Reading time – 5 minutes
- Write using black or blue pen
- Score Attachments *A*, *B* and *C* are provided at the back of this paper
- Write your Centre Number and Student Number at the top of this page and pages 5, 9 and 11, and on any manuscript used

### Total marks – 35

- Attempt Questions 1–4

**Total marks – 35**  
**Attempt Questions 1–4**

All instructions, musical examples, and pauses for reading and writing are included on the recording.

Answer the questions in the spaces provided.

---

**Marks**

**Question 1** (6 marks)

This question is based on an excerpt from the third movement of Dvorak's *Violin Sonata in F*.

Score Attachment A contains the first 76 bars of this movement. You have ONE minute to look at the score.

The whole excerpt will be played ONCE for familiarisation.

Bars 1–16 will be played ONCE for you to answer part (a).

Time: One playing — 2 minute pause

(a) The excerpt begins and ends in the tonic key.  
Name, in order, the TWO modulations that occur.

(i) ..... **1**

(ii) ..... **1**

Bars 49–52 will be played TWICE for you to answer part (b).

Time: First playing — short pause  
Second playing — 1 minute pause

(b) Identify the melodic device used in the violin part. **1**

.....

**Question 1 continues on page 3**

Question 1 (continued)

Bars 1–76 (the whole excerpt) will be played TWICE for you to answer part (c).

Time: First playing — 1 minute pause

Second playing — 2 minute pause

(c) Describe the structure of this excerpt.

**3**

.....

.....

.....

.....

.....

.....

.....

.....

.....

.....

.....

.....

.....

.....

.....

**End of Question 1**

BLANK PAGE

--	--	--	--	--

Centre Number

--	--	--	--	--	--	--	--	--

Student Number

**Question 2** (10 marks)**Marks**

This question is based on excerpts from *Six Celan Songs* (1990) by Michael Nyman.

(a) Part (a) is a melody dictation.

**5**

Bars 1–10 will be played SIX times for you to notate bars 3–9 of the voice part.

The rhythm is indicated above the staff given on page 6.

Time:	First playing	—	10 second pause
	Second playing	—	30 second pause
	Third playing	—	1 minute pause
	Fourth playing	—	1 minute pause
	Fifth playing	—	2 minute pause
	Sixth playing	—	2 minute pause

**Question 2 continues on page 6**

Question 2 (continued)

$\bullet = c.72$

Voice

3

Nächt - lich\_\_\_ ge - schürzt die Lip - pen der\_\_\_

Cello 2

4

Blu - men, ge - kreuzt\_\_\_\_\_ und ver - schränkt -

8 10

die Schäf - te der Fich - ten,

Question 2 continues on page 7

Question 2 (continued)

Score Attachment *B* contains the score of Excerpt *A*.

You have ONE minute to look at the score.

No score is provided for Excerpt *B*.

Excerpts *A* and *B* will be played THREE times for you to answer part (b).

Time:      First playing      —      1 minute pause  
              Second playing      —      1 minute pause  
              Third playing      —      5 minute pause

(b) Compare the use of both *pitch* and *duration* in the two excerpts. 5

.....

.....

.....

.....

.....

.....

.....

.....

.....

.....

.....

.....

.....

.....

.....

.....

.....

.....

.....

.....

.....

.....

End of Question 2

BLANK PAGE



--	--	--	--	--

Centre Number

--	--	--	--	--	--	--	--	--

Student Number

---

**Marks**

**Question 3** (9 marks)

This question is based on the opening of the second movement of the *Guitar Concerto* (1996) by Bozidar Kos. The guitar enters in bar 9.

Score Attachment C contains the score of this excerpt.

You have ONE minute to look at the score.

The excerpt will be played ONCE for familiarisation.

The excerpt will be played THREE times for you to answer parts (a), (b) and (c).

Time:      First playing      —      30 second pause  
              Second playing      —      2 minute pause  
              Third playing      —      5 minute pause

(a) Describe TWO ways register is used in this excerpt.

**2**

.....

.....

.....

.....

.....

**Question 3 continues on page 10**

Question 3 (continued)

- (b) In this excerpt, the string section has an accompanying role. Explain THREE instrumental techniques the composer has used to reinforce this role. **3**

.....  
.....  
.....  
.....  
.....  
.....

- (c) Describe the similarities of, and differences between, the material played by the bassoon (bars 2–8) and the guitar (bars 9–15). **4**

.....  
.....  
.....  
.....  
.....  
.....  
.....  
.....  
.....

**End of Question 3**

--	--	--	--	--

Centre Number

--	--	--	--	--	--	--	--	--

Student Number

---

**Question 4** (10 marks)

You have 20 minutes to answer Question 4.

*The last twenty-five years have been marked by composers' exploration of tone colour and performing techniques.*

Discuss this statement in relation to at least TWO works you have studied from the Mandatory Topic, *Music of the Last 25 Years (Australian focus)*. At least ONE work must be Australian.

.....

.....

.....

.....

.....

.....

.....

.....

.....

.....

.....

.....

.....

.....

.....

.....

.....

.....

.....

.....

.....

.....

.....

.....

.....

.....

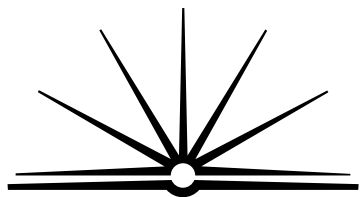
.....

**Question 4 continues on page 12**





BLANK PAGE



**B O A R D O F S T U D I E S**  
NEW SOUTH WALES

**2001**

**HIGHER SCHOOL CERTIFICATE  
EXAMINATION**

# Music 2

## Score Attachment A

Score for Question 1

*Violin Sonata in F* by Antonin Dvorak

Allegro molto

5

10

15 16 *spiccato*

20 25

30

*p*

*mf*



35

*p* *fz*

This system contains measures 35 through 39. The right hand features a melodic line with slurs and accents, while the left hand provides a steady accompaniment. Dynamic markings include *p* at the start and *fz* at the end.

40

*fz* *cresc.*

This system contains measures 40 through 44. The right hand has a more active melodic line with slurs. The left hand continues with a rhythmic accompaniment. Dynamic markings include *fz* and *cresc.*

45

*f*

This system contains measures 45 through 48. The right hand features a dense, repetitive melodic pattern with slurs. The left hand has a simple accompaniment. A dynamic marking of *f* is present.

49 50 52

*dimin.* *p dimin.* *dimin.* *dimin.*

This system contains measures 49 through 54. The right hand has a melodic line with slurs. The left hand has a simple accompaniment. Dynamic markings include *dimin.* and *p dimin.*

55

*pp* *p* *pp*

This system contains measures 55 through 59. The right hand has a melodic line with slurs. The left hand has a simple accompaniment. Dynamic markings include *pp* and *p*.

60

*fp*

65

*fp*

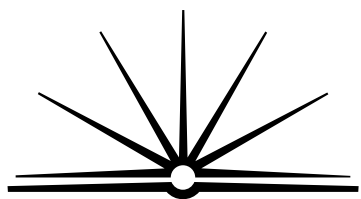
*poco a poco cresc.*

70

*f*

75

*f*



**B O A R D O F S T U D I E S**  
NEW SOUTH WALES

**2001**

**HIGHER SCHOOL CERTIFICATE  
EXAMINATION**

# Music 2

## Sight Singing

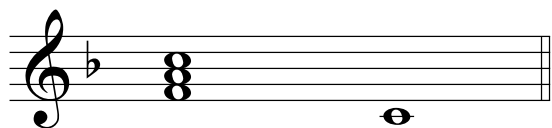
### **General Instructions**

- Reading time – 2 minutes

**Total marks – 5**

## Sight-singing piece No. 1

- The test may be performed to the given words, or on any open vowel, or sol-fa or solfege.
  - The examiner will give you the tonic chord and the starting note once after handing the test to you, and once again, immediately before you sing the piece.
- 



Tonic chord      Starting note

Moderato  
*mf*

A musical staff in treble clef with a key signature of one flat (B-flat) and a common time signature (C). The tempo is marked 'Moderato' and the dynamic is 'mf'. The melody consists of the following notes: F4 (quarter), G4 (quarter), A4 (quarter), Bb4 (quarter), C5 (quarter), Bb4 (quarter), A4 (quarter), G4 (quarter), F4 (half).

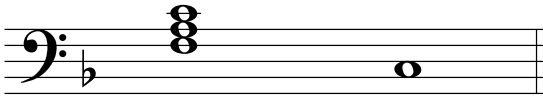
From a wreck of tree in the wash of night

A musical staff in treble clef with a key signature of one flat (B-flat). The melody consists of the following notes: F4 (quarter), G4 (quarter), A4 (quarter), Bb4 (quarter), C5 (quarter), Bb4 (quarter), A4 (quarter), G4 (quarter), F4 (half).

Glo - ry, glo-ry, sings the bird; A - cross ten thou - sand

A musical staff in treble clef with a key signature of one flat (B-flat). The melody consists of the following notes: F4 (quarter), G4 (quarter), A4 (quarter), Bb4 (quarter), C5 (quarter), Bb4 (quarter), A4 (quarter), G4 (quarter), F4 (half).

years\_ of\_ light His cre - a - tive voice. is\_ heard.



Tonic chord      Starting note

Moderato

*mf*



From a wreck of tree in the wash of night



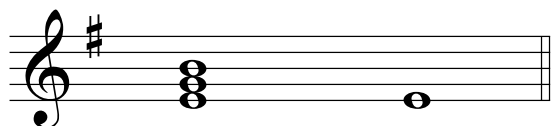
Glo - ry, glo-ry, sings the bird;      A - cross ten thou - sand



years\_\_ of\_\_ light His cre - a - tive voice is\_\_ heard.

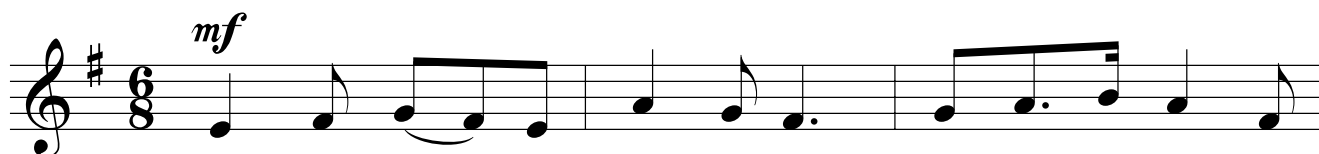
## Sight-singing piece No. 2

- The test may be performed to the given words, or on any open vowel, or sol-fa or solfege.
- The examiner will give you the tonic chord and the starting note once after handing the test to you, and once again, immediately before you sing the piece.

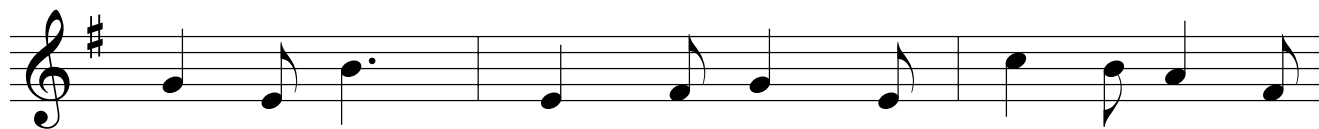


Tonic chord      Starting note

Moderato



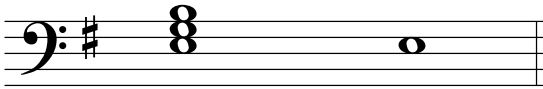
Wind that breaks\_ a - cross the bay tum - bles the grass in



green and grey. Lapped by grass, with posts a - lean the



house patch - peels in\_ grey\_ and green.



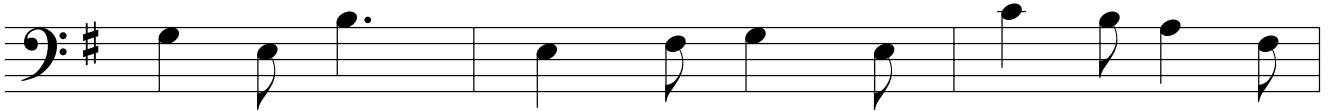
Tonic chord      Starting note

Moderato

*mf*



Wind that breaks\_ a - cross the bay tum - bles the grass in



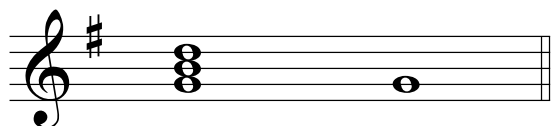
green and grey. Lapped by grass, with posts a - lean the



house patch - peels in\_\_\_ grey\_\_\_ and green.

### Sight-singing piece No. 3

- The test may be performed to the given words, or on any open vowel, or sol-fa or solfege.
  - The examiner will give you the tonic chord and the starting note once after handing the test to you, and once again, immediately before you sing the piece.
- 



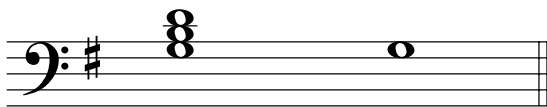
Tonic chord      Starting note

Allegretto  
*mf*

Musical notation for a sight-singing piece in 4/4 time, key of D major (one sharp). The piece consists of three staves of music. The first staff begins with a treble clef, a key signature of one sharp, and a 4/4 time signature. The tempo is marked 'Allegretto' and the dynamic is 'mf'. The lyrics are: 'Kev, in the coun - try of the my - all tree,'. The second staff continues the melody with lyrics: 'cra-shes a plas-tic pick a-cross the strings, throws back his head and sings, e-'. The third staff concludes the piece with lyrics: 'nor - mous - ly, of bro - ken heart - ed shei-las left be - hind.'.

Kev, in the coun - try of the my - all tree,  
cra-shes a plas-tic pick a-cross the strings, throws back his head and sings, e-  
nor - mous - ly, of bro - ken heart - ed shei-las left be - hind.





Tonic chord      Starting note

Allegretto

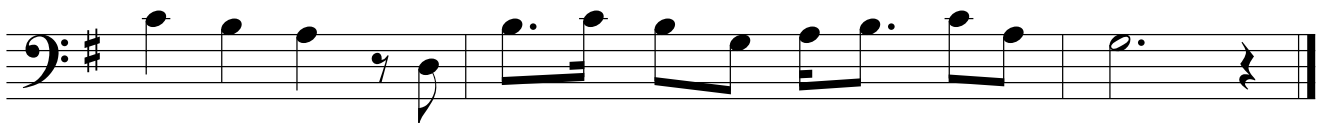
*mf*



Kev, in the coun - try of the my - all tree,



cra-shes a plas-tic pick a-cross the strings, throws back his head and sings, e-



nor-mous - ly, of bro - ken heart - ed shei-las left be - hind.

BLANK PAGE



**2001**  
HIGHER SCHOOL CERTIFICATE  
EXAMINATION

# Music 2

## Score Attachment B

Score for Question 2

*Six Celan Songs, No. 5* by Michael Nyman

Excerpt A

Six Celan Songs, No. 5

Michael Nyman, 1990

25 *mf*

Voice  
dies ist die Ge - - - gend, wo

Violin 1  
Violin 2  
Violin 3 *f*  
Viola *featured*  
Cello 1  
Cello 2  
Bass Gtr.  
Bass Cl.  
Sop. Sax. 1 *(non solo)*  
Sop. Sax. 2 *sub. p*  
Alto Flute *Solo*  
Trumpet  
Horn *colla vice*  
Euphonium  
Piano

Score in C (Bass Guitar 8ve lower.)

Score for Voice and Orchestra, page 31. The score includes parts for Voice, Violin 1, Violin 2, Violin 3, Viola, Cello 1, Cello 2, Bass Gtr., Bass Cl., Sop. Sax. 1, Sop. Sax. 2, Alto Flute, Trumpet, Horn, Euphonium, and Piano.

Lyrics: rast - - - en, die - - - wir er - - - eilt:

Performance markings include *ff* (fortissimo) and *colla voce* (with voice).

Section marker: To Alto

**BLANK PAGE**