



**B O A R D O F S T U D I E S**  
NEW SOUTH WALES

**2004**

**HIGHER SCHOOL CERTIFICATE  
EXAMINATION**

--	--	--	--	--

Centre Number

--	--	--	--	--	--	--	--	--	--

Student Number

# Industrial Technology

## Multimedia Industries

### General Instructions

- Reading time – 5 minutes
- Working time –  $1\frac{1}{2}$  hours
- Write using black or blue pen
- Draw diagrams using pencil
- Board-approved calculators may be used
- Write your Centre Number and Student Number at the top of this page and pages 5, 9, 13 and 17

### Total marks – 100

**Section I** Pages 2–12

#### 60 marks

- Attempt Questions 1–3
- Allow about 55 minutes for this section

**Section II** Pages 13–19

#### 40 marks

- Attempt Questions 4–5
- Allow about 35 minutes for this section

**Section I**

**60 marks**

**Attempt Questions 1–3**

**Allow about 55 minutes for this section**

Answer the questions in the spaces provided.

---

**Marks**

IND-TECH is a company in the multimedia industry employing a mix of male and female employees. Management has decided to investigate the viability of introducing new technologies to stimulate productivity and expansion in the market.

**Question 1 (20 marks)**

(a) Identify an example of a new technology that IND-TECH could investigate. **1**

.....  
.....

(b) Outline the implications of the introduction of new technologies on IND-TECH’s existing technologies. **3**

.....  
.....  
.....  
.....  
.....  
.....

**Question 1 continues on page 3**

Question 1 (continued)

- (c) Describe ways in which IND-TECH’s management could evaluate the viability of introducing new technologies. 4

.....

.....

.....

.....

.....

.....

.....

.....

- (d) Explain how the introduction of new technologies could stimulate IND-TECH’s productivity. 4

.....

.....

.....

.....

.....

.....

.....

.....

**Question 1 continues on page 4**



**Industrial Technology  
Multimedia Industries**

--	--	--	--	--

Centre Number

--	--	--	--	--	--	--	--	--

Student Number

**Section I (continued)**

**Marks**

**Question 2 (20 marks)**

- (a) Identify sources of finance that IND-TECH may use to support the introduction of the new technologies. **2**

.....

.....

.....

.....

- (b) Outline possible changes to the production manager’s responsibilities when new technologies are introduced. **2**

.....

.....

.....

.....

**Question 2 continues on page 6**

Question 2 (continued)

- (c) The introduction of new technologies may enhance IND-TECH’s position in the product market. 4

Discuss how the introduction of new technologies could improve the marketability of IND-TECH’s products.

.....

.....

.....

.....

.....

.....

.....

.....

.....

- (d) As a result of the introduction of new technologies, a number of IND-TECH’s employees are identified as being redundant and are to be dismissed. 4

Outline the industrial rights of these employees, and identify appropriate action that can be taken by them.

.....

.....

.....

.....

.....

.....

.....

.....

.....

**Question 2 continues on page 7**



BLANK PAGE



--	--	--	--	--

Centre Number

--	--	--	--	--	--	--	--	--

Student Number

Section I (continued)

Question 3 (20 marks)

Marks

- (a) Identify the sign shown and state how IND-TECH's employees should respond to it. 2



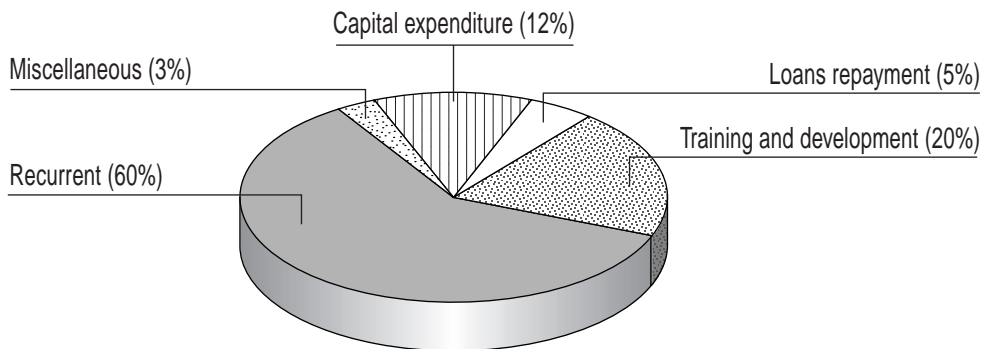
.....

.....

.....

.....

- (b) The graph shows IND-TECH's expenditure in the year following the introduction of the new technologies. 2



Identify reasons for the proportion being spent on training and development.

.....

.....

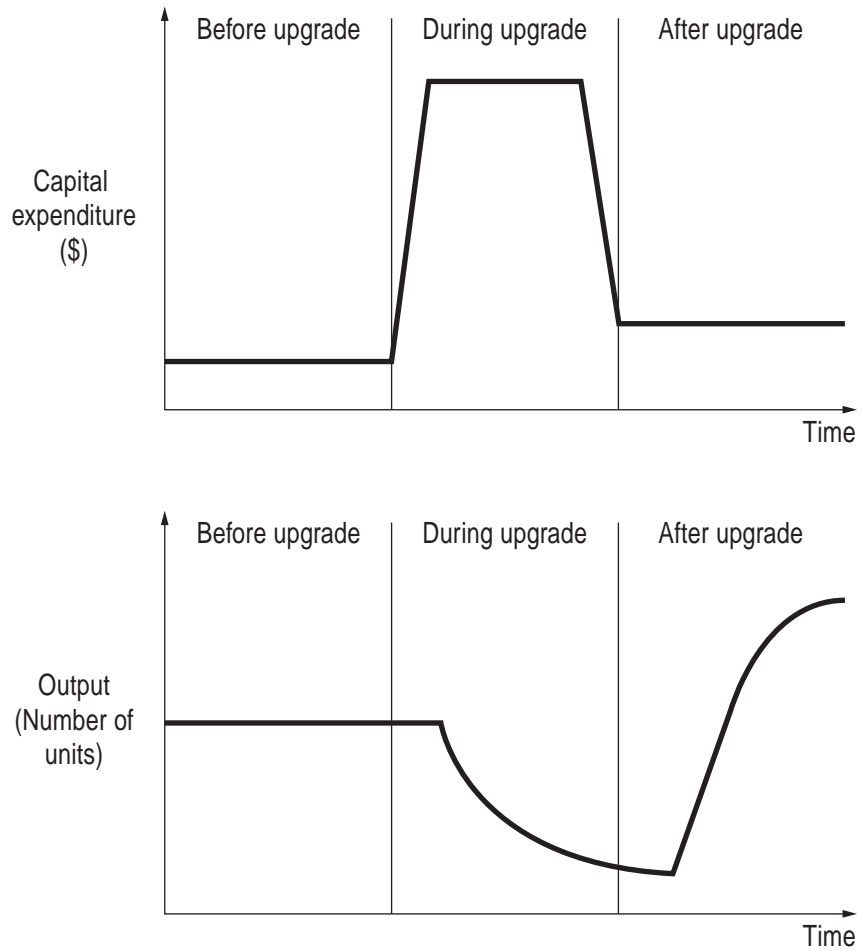
.....

.....

Question 3 continues on page 10

Question 3 (continued)

- (c) The graphs below illustrate IND-TECH's capital expenditure and output before, during and after the introduction of new technologies. 4



Explain the reasons for the changes in capital expenditure and output during and after the upgrade phases.

.....

.....

.....

.....

.....

.....

.....

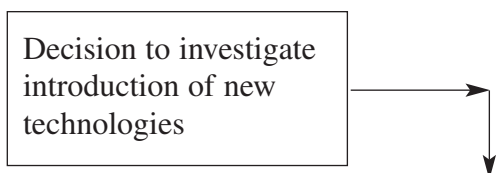
.....

Question 3 continues on page 11

Question 3 (continued)

- (d) Complete the diagram to show a sequence plan for the introduction of the new technologies at IND-TECH. **4**

**Introduction of new technologies plan**



**Question 3 continues on page 12**



**Industrial Technology  
Multimedia Industries**

--	--	--	--	--

Centre Number

--	--	--	--	--	--	--	--	--

Student Number

**Section II**

**40 marks**

**Attempt Questions 4–5**

**Allow about 35 minutes for this section**

Answer the questions in the spaces provided.

---

**Marks**

**Question 4 (20 marks)**

(a) Outline the functions of authoring tools.

**2**

.....

.....

.....

.....

(b) Identify the advantages of a liquid crystal display over a cathode ray tube display.

**2**

.....

.....

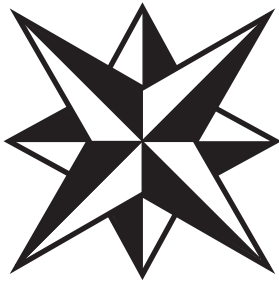
.....

.....

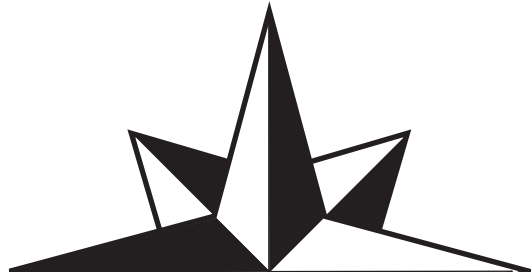
**Question 4 continues on page 14**

Question 4 (continued)

- (c) The final logo shown was developed from the original graphic. Identify and describe the formatting processes that would be used in the development of the final logo. 4



Original



Final logo

.....

.....

.....

.....

.....

.....

.....

.....

.....

Question 4 continues on page 15

Question 4 (continued)

- (d) Clip art is an integral part of many multimedia presentations. Discuss factors to be considered in the selection and use of clip art for this purpose. **4**

.....

.....

.....

.....

.....

.....

.....

.....

**Question 4 continues on page 16**





**Industrial Technology  
Multimedia Industries**

--	--	--	--	--

Centre Number

--	--	--	--	--	--	--	--	--

Student Number

**Section II (continued)**

---

**Marks**

**Question 5 (20 marks)**

- (a) Describe the purpose of a hyperlink. **2**

.....

.....

.....

.....

- (b) Outline TWO methods that are commonly used to produce animation. **2**

.....

.....

.....

.....

- (c) Outline the advantages of saving information in a portable document format (pdf). **4**

.....

.....

.....

.....

.....

.....

.....

.....

.....

**Question 5 continues on page 18**

Question 5 (continued)

- (d) Discuss the implications of using high resolution digital cameras when developing multimedia presentations that are to be used on the World Wide Web. **4**

.....

.....

.....

.....

.....

.....

.....

.....

**Question 5 continues on page 19**



BLANK PAGE