



HIGHER SCHOOL CERTIFICATE EXAMINATION

1996

**GEOGRAPHY**

2/3 UNIT (COMMON)

*Time allowed—Three hours  
(Plus 5 minutes' reading time)*

**DIRECTIONS TO CANDIDATES**

- You should receive this paper with the Broadsheet.
- Board-approved calculators may be used.

**Section I**

- **Part A** (15 marks) Attempt ALL questions.  
Mark your answers in pencil on the Answer Sheet provided.  
Select the alternative A, B, C, or D that best answers the question.
- **Part B** (10 marks) Attempt ALL questions.  
Answer the questions in the spaces provided in this paper.

**Section II** (75 marks)

- Attempt THREE questions, each from a different Option.
- Each question is worth 25 marks.
- Answer each question in Section II in a *separate* Writing Booklet.
- You may ask for extra Writing Booklets if you need them.

**SECTION I**

(25 Marks)

The questions in Section I refer to the Broadsheet.

**PART A**

(15 Marks)

Allow about 25 minutes for this Part.

Attempt ALL questions.

Each question is worth 1 mark.

Mark your answers in pencil on the Answer Sheet provided.

Select the alternative A, B, C, or D that best answers the question.

**Use the Water Availability map and the Use of Water graph on page 1 of the Broadsheet to answer Questions 1 and 2.**

**1 .** The percentage of water use by industry in Poland is approximately

- (A) 20
- (B) 40
- (C) 60
- (D) 80

**2 .** The internal renewable water resources per capita of Algeria is

- (A) 10–49.9 thousand cubic metres per year.
- (B) 5–9.9 thousand cubic metres per year.
- (C) 2–4.9 thousand cubic metres per year.
- (D) Under 2 thousand cubic metres per year.

**Use the Energy Consumption pie graph on page 1 of the Broadsheet to answer Question 3.**

**3 .** The absolute value of coal is

- (A) 23.367 million tons of oil equivalent.
- (B) 2336.7 million tons of oil equivalent.
- (C) 30 million tons of oil equivalent.
- (D) 233.7 million tons of oil equivalent.

**Use the Renewable Energy Resources map on page 1 of the Broadsheet to answer Question 4.**

4. The most common renewable energy scheme in countries generating 100 000 and over gigawatt hours of energy is
- (A) hydroelectric.
  - (B) geothermal.
  - (C) wind farms.
  - (C) tidal plants.

**Use the topographic map of Grand Canyon National Park, on page 2 of the Broadsheet to answer Questions 5 to 8.**

5. The aspect of the slope at Mather Pt GR 218881 is
- (A) SE
  - (B) NW
  - (C) SW
  - (D) NE
6. The approximate latitude and longitude of Yavapai Pt GR 215882 is
- (A) 88°10'N 21°30'W
  - (B) 21°30'N 88°10'W
  - (C) 36°04'N 112°07'W
  - (D) 36°04'E 112°07'N
7. The approximate distance along the trail/route between Indian Garden GR 213887 and Pipe Spring GR 219885 is
- (A) 2.8 km
  - (B) 2.18 km
  - (C) 28 km
  - (D) 218 m
8. The approximate bearing of Mather Pt GR 218881 from Indian Garden GR 213887 is
- (A) 135°
  - (B) 225°
  - (C) 45°
  - (D) 315°

**Use the topographic map of Darlington on page 3 of the Broadsheet to answer Questions 9 to 12.**

**9.** Identify TWO examples of primary industry in the SW quadrant.

- (A) Weir and farm.
- (B) Orchard and cemetery.
- (C) Gravel pit and farm.
- (D) Plantation and clay pit.

**10.** The pattern of the major roads leading out of Darlington is

- (A) grid.
- (B) linear.
- (C) dendritic.
- (D) radial.

**11.** The approximate proportion of built-up area in AR 2616 is

- (A) 33%
- (B) 43%
- (C) 50%
- (D) 66%

**12.** The built feature at GR 315130 is

- (A) a quarry.
- (B) an embankment.
- (C) a cutting.
- (D) a tunnel.

**Use the photographs of Darlington on page 3 of the Broadsheet to answer Question 13.**

**13.** The photograph that has the smallest scale is

- (A) Residential area.
- (B) College of Technology.
- (C) Cornmill Shopping Centre.
- (D) Northgate House office-block.

**Use the graph of Gross Domestic Product by Sectors on page 4 of the Broadsheet to answer Question 14.**

**14.** Nepal's distribution of Gross Domestic Product by sector is

- (A) agriculture 58%, industry 14%, services 28%.
- (B) agriculture 71%, industry 14%, services 15%.
- (C) agriculture 14%, industry 58%, services 28%.
- (D) agriculture 48%, industry 42%, services 84%.

**Use the Example of Productivity Activity photographs on page 4 of the Broadsheet to answer Question 15.**

**15.** The three photographs are examples of

- (A) vertical photography.
- (B) satellite photography.
- (C) oblique photography.
- (D) ground-level photography.

BLANK PAGE

BLANK PAGE

BLANK PAGE



**EXAMINER'S USE ONLY****STUDENT NUMBER****1996****HIGHER SCHOOL CERTIFICATE EXAMINATION  
GEOGRAPHY****2/3 UNIT (COMMON)—SECTION I**

---

**CENTRE NUMBER****PART B**

(10 Marks)

Allow about 20 minutes for this Part.

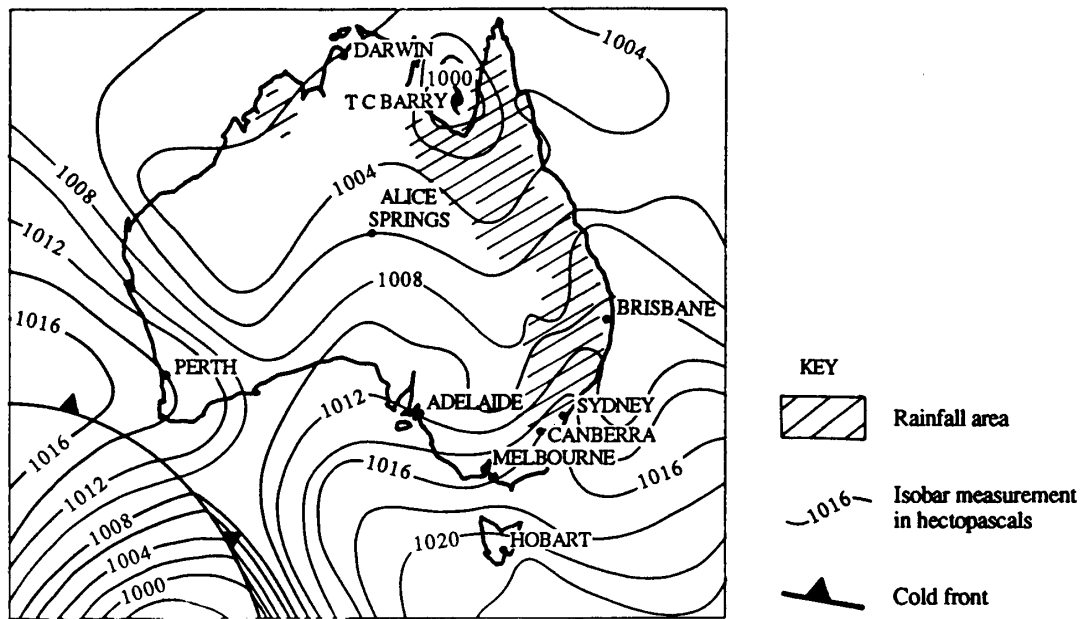
Attempt BOTH questions.

Answer the questions in the spaces provided in this paper.

**Please turn over**

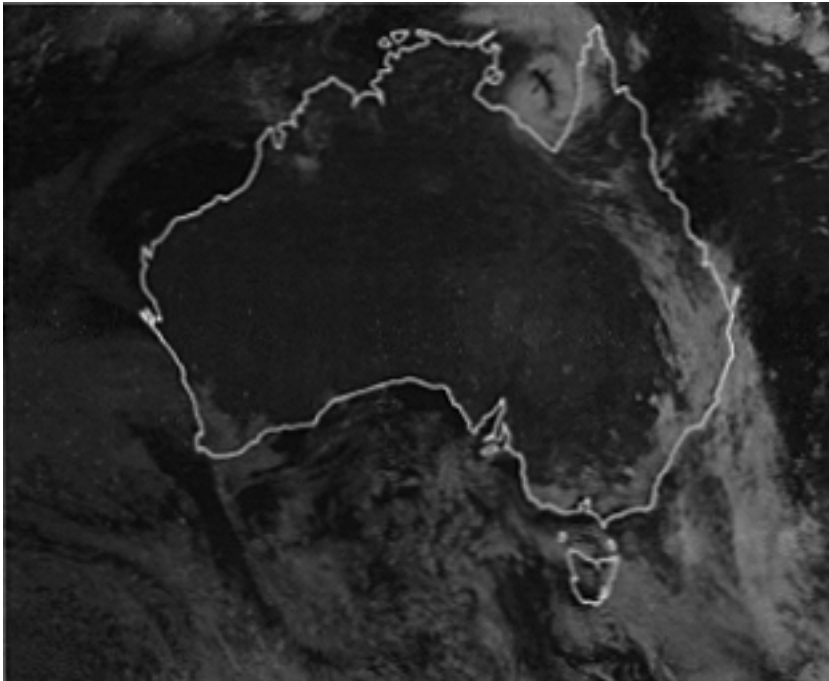
16. Study the synoptic chart and satellite photograph which represent the same date.

SYNOPTIC CHART



Source: Australian Bureau of meteorology

SATELLITE PHOTOGRAPH



- | 16. (Continued)   |   | Marks |
|---|---|-------|
| (a) Which season does the synoptic chart represent?   | .....                                     | 1     |
| (b) What is the barometric pressure at Alice Springs?   | .....                                     | 1     |
| (c) What type of pressure system is located at X on the satellite photograph.   | .....                                     | 1     |
| (d) Describe the weather that Perth would experience within the next twenty-four hours.   | .....<br>.....<br>.....<br>.....<br>..... | 2     |
| <br>17. Study the topographic maps on pages 2 and 3 of the Broadsheet.  |   | <br>5 |
| Identify a geographic issue from ONE of the maps that can be investigated through fieldwork. Outline the fieldwork methods you would use to investigate the geographic issue. |   |       |
| .....   |   |       |
| .....   |   |       |
| .....   |   |       |
| .....   |   |       |
| .....   |   |       |
| .....   |   |       |
| .....   |   |       |
| .....   |   |       |
| .....   |   |       |
| .....   |   |       |
| .....   |   |       |
| .....   |   |       |
| .....   |   |       |

**17. (Continued)**

.....

.....

.....

.....

.....

.....

.....

.....

**1996  
HIGHER SCHOOL CERTIFICATE EXAMINATION  
GEOGRAPHY  
2/3 UNIT (COMMON)—SECTION II**

**SECTION II—OPTIONS**

(75 Marks)

Attempt THREE questions, each from a different Option.

Each question is worth 25 marks.

Allow about 45 minutes for each question.

Answer each question in a *separate* Writing Booklet.

**OPTION 1. NATURAL RESOURCES**

**Marks**

*EITHER*

- 18.** Using the Renewable Energy Resources map on page 1 of the Broadsheet and your knowledge of Natural Resources, write an extended response on:

*The Use of Natural Resources.*

In your response:

- |  |           |
|--|-----------|
| (a) explain the terms 'renewable', 'recyclable', and 'exhaustible resources';                        | <b>6</b>  |
| (b) compare the production of renewable energy resources in Africa and North America;                | <b>5</b>  |
| (c) using sample studies of a variety of natural resources, analyse the issues related to their use. | <b>14</b> |

*OR*

- |  |           |
|--|-----------|
| <b>19.</b> With reference to a variety of sample studies, discuss the natural resource management strategies adopted by government and non-government organisations. | <b>25</b> |
|--|-----------|

**OPTION 2. FRAGILE ECOSYSTEMS****Marks***EITHER*

- 20.** Using the stimulus material of the Grand Canyon on page 2 of the Broadsheet and your knowledge of Fragile Ecosystems, write an extended response on:

*Human Impact on Ecosystems.*

In your response:

- |     |  |           |
|-----|--|-----------|
| (a) | identify an ecosystem and provide evidence from the stimulus material to support your answer;                          | <b>3</b>  |
| (b) | describe how human activities have affected the ecosystem you have identified;   | <b>8</b>  |
| (c) | compare and contrast the impact of human activities on this ecosystem with another fragile ecosystem you have studied. | <b>14</b> |

*OR*

- 21.** 'Management strategies at a variety of scales are required for the protection of fragile ecosystems.'

Analyse this statement and illustrate your answer with sample studies.

**OPTION 3. LARGE CITIES****Marks***EITHER*

- 22.** Using the stimulus material of Darlington on page 3 of the Broadsheet and your knowledge of Large Cities, write an extended response on:

*The Roles of Large Cities.*

In your response:

- |     |   |           |
|-----|---|-----------|
| (a) | name and locate your major study of ONE large city of at least two million people;                          | <b>2</b>  |
| (b) | describe the roles of the city of Darlington;   | <b>7</b>  |
| (c) | compare and contrast the roles of the large city you have studied with the roles of the city of Darlington. | <b>16</b> |

*OR*

- 23.** Describe and account for the changing patterns of world urbanisation. **25**

**OPTION 4. PRODUCTIVE ACTIVITY****Marks***EITHER*

- 24.** Using the Model of Productive Activity shown on page 4 of the Broadsheet and your knowledge of Productive Activity, write an extended response on:

*A Productive Activity on a Global Scale.*

In your response:

- |  |           |
|--|-----------|
| (a) name a productive activity and describe its global pattern;                                | <b>3</b>  |
| (b) describe and account for the factors that affect the location of this productive activity; | <b>10</b> |
| (c) discuss the changing nature of this productive activity.                                   | <b>12</b> |

*OR*

- |   |           |
|---|-----------|
| <b>25.</b> Describe and account for the impact of technological change on ONE production unit you have studied. | <b>25</b> |
|---|-----------|