

Science

Writing Time : 2
Total Marks : 100

StudentBounty.com

READ THE FOLLOWING DIRECTIONS CAREFULLY:

1. In this **booklet**, you will find 25 questions in Section A and 5 questions in Section B. You must answer **all** the questions. Each question in Section A is worth **2 marks**.
2. All answers for Section 'A' and 'B' **must** be written in the answer sheet provided by the school.
3. Do **not** start writing the answers to questions until you are given permission to do so.
4. You will have 2 hours in which to answer all the questions.
5. Once the examination begins, you will not be allowed to ask questions, speak with others or move around.
6. If you finish before the time is over, close the Answer Booklet, and sit quietly.

DO NOT forget to write your name, class/section and the name of your school on the answer sheet(s).

IF YOU HAVE ANY QUESTIONS, ASK THEM NOW!

TURN PAGE

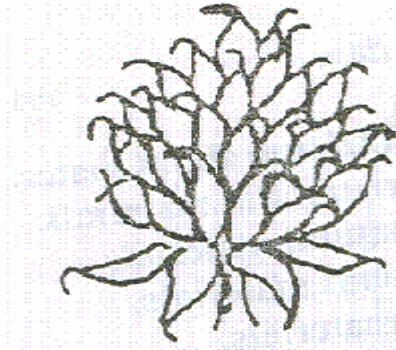
(15 Minutes is to be allowed for reading as well as for teachers on duty to explain the instructions)

SECTION A
25 Questions – 50 Marks
Answer ALL questions

*Direction: Each question in this section is followed by four possible choices of answers. Choose the correct answer and write it down in the **answer sheets** provided by the school.*

1. A green house is useful to farmers because it
 - A keeps the plants warm.
 - B protects the plants from animals.
 - C protects the plants from diseases.
 - D makes the temperature suitable for plants to grow.

2. Look at the diagram of a travelling seed. How do such seeds travel?
 - A With the help of strong hooks
 - B With the help of parachute
 - C With the help of the wind
 - D With the help of wings



3. Which of the following can be the best reason for family planning?
 - A Mother can regain her strength between pregnancies.
 - B Father can get time to earn money for the family.
 - C Children can grow well and remain healthy.
 - D Children can get better education.

4. Which one of the following group of food is an example of a balanced diet?
 - A rice, pork, bread and beans
 - B chicken, mango, saag and rice
 - C bread, pork, chicken and beans
 - D rice, chicken, bread and mutton

5. A pregnant woman should eat extra amount of good food because it helps to
 - A keep her body healthy.
 - B produce more breast milk.
 - C keep her baby and herself healthy.
 - D keep her self healthy and beautiful.

6. The method to stop or prevent pregnancy is called
 - A respiration.
 - B fertilization.
 - C germination.
 - D contraception.

7. The shape of an egg is
 - A rectangle.
 - B triangle.
 - C arch.
 - D oval.

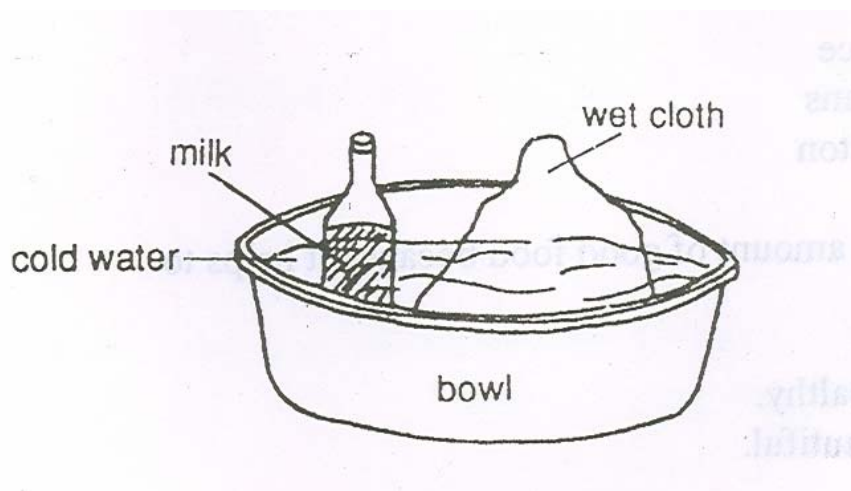
8. Flowers have colourful petals and make nectar to
 - A attract birds.
 - B attract insects for food.
 - C attract insects for pollination.
 - D make the flowers look beautiful.

9. Plants use most of the carbon dioxide to prepare food during
 - A midday.
 - B the morning.
 - C the evening.
 - D twenty four hours a day.

10. Which of the following is **NOT** true about materials?
 - A Desks and benches are natural materials.
 - B Stone and wood are natural materials.
 - C Raw materials are natural materials.
 - D Bricks are man made materials.

11. Pema uses a plastic bottle instead of a glass bottle to carry water to school because it is
 - A light, found everywhere and does not break.
 - B easy to clean and looks good.
 - C light and found everywhere.
 - D easy to carry any where.

12. Study the diagram given below.



According to the above diagram, which of the following is correct?

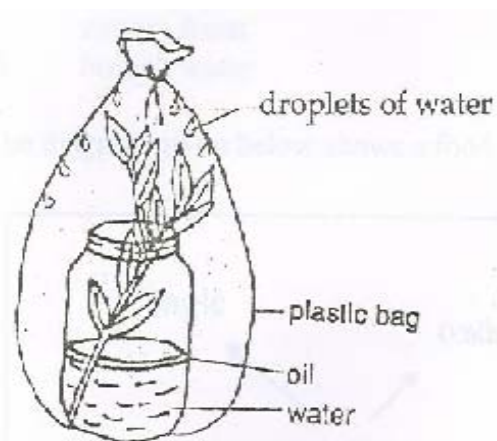
- A The wet cloth keeps the milk cool.
- B The wet bottle keeps the milk cool.
- C The bowl of water keeps the milk cool.
- D The wet cloth and the bowl of water keeps the milk cool.

13. When you chew food, the joint used is

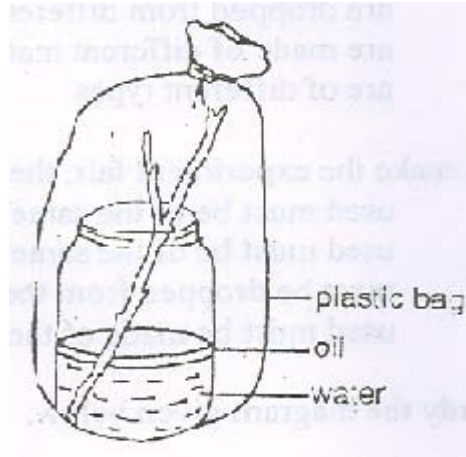
- A hinge.
- B sliding.
- C ball and socket.
- D sliding and hinge.

14. Study the diagrams given below.

A Twig with leaves



B Twig with no leaves



The above experiment shows that plants lose water from the surface of the leaves. This process is useful to plants because it helps to

- A pull more water from the roots.
- B make the leaves look green.
- C keep cool and healthy.
- D make food.

15. The table given below shows the age of ten girls of class VI.

Roll Number	Age in years
1	12
2	13
3	12
4	14
5	12
6	14
7	12
8	15
9	14
10	14

The average age of the girls is

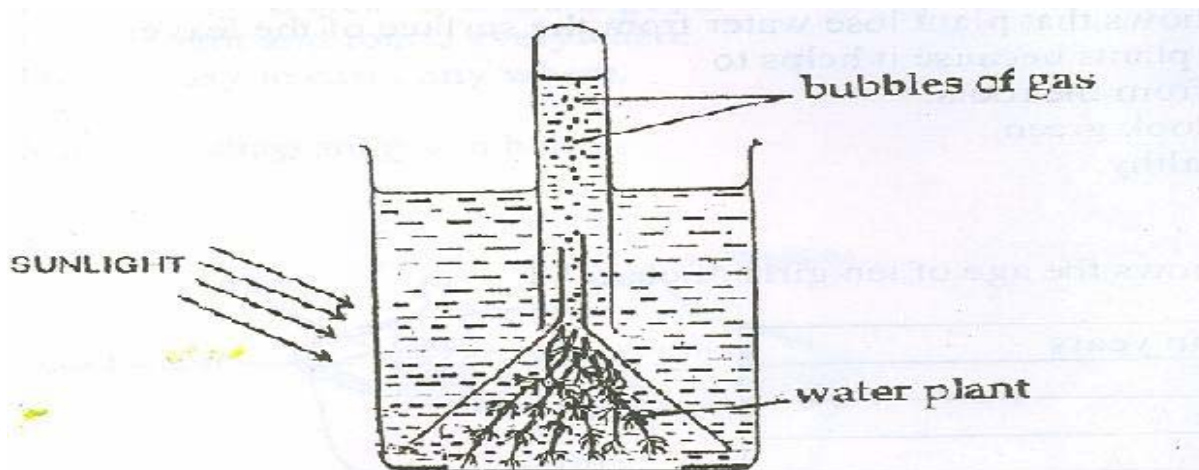
- A 12 years.
- B 13 years.
- C 14 years.
- D 15 years.

The table given below is to be used with questions 16 and 17.

Lemo did an experiment to see which ball bounces best. The result is given below.

Types of ball	Volley ball	Basket ball	Foot ball
Balls dropped from	2 meters	1.5 meters	3 meters
Number of bounces	2	3	4

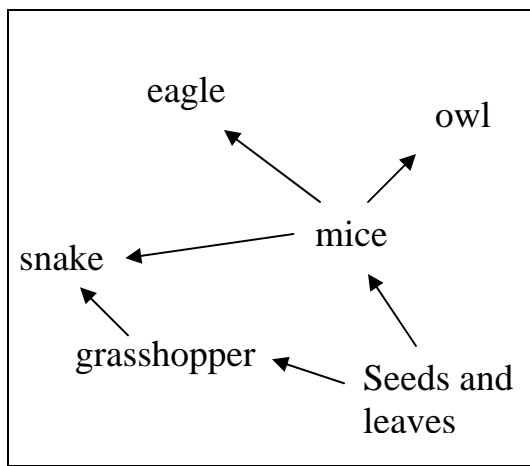
16. This experiment is not fair because the balls
- A have different number of bounces.
 - B are dropped from different heights.
 - C are made of different materials.
 - D are of different types.
17. To make the experiment fair, the balls
- A used must be of the same size.
 - B used must be of the same type.
 - C must be dropped from the same height.
 - D used must be made of the same materials.
18. Study the diagram given below.



The process taking place above is

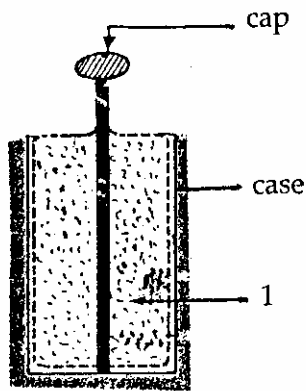
- A pollination.
- B germination.
- C fermentation.
- D photosynthesis.

19. The path through which electricity flows is called
A connection.
B filament.
C current.
D circuit.
20. Which one of the following changes takes place in girls during puberty?
A hips widen
B voice changes
C shoulders widen
D testes produce sperm
21. Which of the following is *NOT* a chemical reaction?
A burning of paper
B burning of wood
C cutting fruits
D boiling water
22. The diagram given below shows a food web.



- Which two animals will not survive if all the mice are killed?
A snake and grass hopper
B snake and eagle
C snake and owl
D owl and eagle
23. When we breathe on to a cold glass or mirror, it steams up.
This is because
A there is carbon dioxide in the air we breathe out.
B there is oxygen in the air we breathe out.
C there is water in the air we breathe out.
D the air we breathe out is warm.

24. The diagram given below shows a battery cut in half.



The part numbered **1** is

- A dust.
- B cover.
- C chemical.
- D connection.

25. Choden planted 25 seeds in box A and 25 seeds in box B. She watered both the boxes of seeds and put box A outside on a window sill, and put box B on the same window sill inside. After five days she counted the number of seeds which had germinated in each box. She got the following result.

Box A	37
Box B	19

The result shows that seeds

- A need light to germinate.
- B need a dark place to germinate.
- C germinate more quickly in a cold place.
- D germinate more quickly in a warm place.

SECTION B
5 Questions – 50 Marks
Answer ALL questions

Direction: Answer the questions given below as directed. All answers must be written in the answer sheets provided by the school. The intended marks for each question is given in brackets [].

Question 26

- (a) Match the following. You can use the answers from Column B more than once. Rewrite the correct matching pairs.

[3]

Column A	Column B
(i) conductor	a) egg
(ii) insulator	b) STD
(iii) body building food	c) pin
(iv) energy giving food	d) scale
(v) use of condom	(e) rice
	(f) coin

- (b) Complete the following table. Rewrite the missing words in the following table in your answer sheets.

[3]

	Joints	Movement	Examples
1.	Hinge	elbow, knee
2.	Rotational, hips
3.	neck,

- (c) Write **TRUE** or **FALSE** for the following statements.

[4]

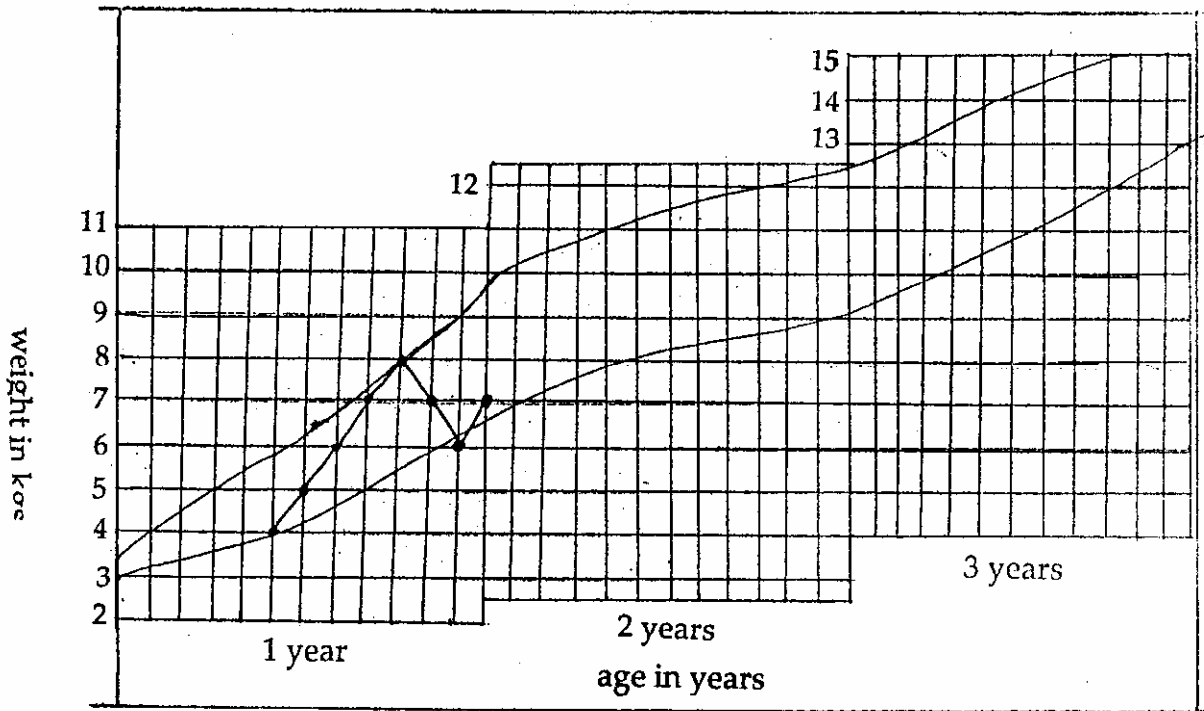
- (i) Snow and hailstones form when the warm vapour filled air rises into very cold air.
- (ii) There are more suspension bridges than arch bridges in Bhutan.
- (iii) Wind energy is the main source of income in Bhutan.
- (iv) The distance a bridge crosses is called an arch.

Question 27

- (a) Define the following terms.
- (i) Static electricity
 - (ii) Habitat
 - (iii) Recycle

(b) The diagram given below is a 'Health Card' of baby Pema. Study the card carefully and answer the questions that follow.

[4]



- (i) What was Pema's weight when she was 5 months?
- (ii) In which month did she fall sick?
- (iii) For how many months was she sick?
- (iv) What was her weight when she was 1 year?

(c) Write **THREE** advantages of breast milk compared to bottle milk.

[3]

Question 28

(a) The sentences given below show the process to separate a mixture of chalk and sugar. They are in the wrong order. Rewrite the process in the correct order.

1. Filter the mixture.
2. Add water to the mixture.
3. Evaporate the water from the solution.
4. Stir the solution.

(b) People in Bhutan have looked after the forests for many centuries.

[6]

- (i) What are the forests in southern Bhutan called?
- (ii) Why is there very little light on the forest floor?
- (iii) What do you understand by evergreens?
- (iv) Name an animal which is rare.
- (v) Write **TWO** reasons that are causing our forest to disappear fast?

Question 29

(a) The table given below shows the time taken by seeds with parachute and seeds without parachute to fall. Study the table and answer the questions that follow.

[7]

Measurements	Seeds with parachute	Seeds without parachute
1	2 seconds	1 second
2	3 seconds	0.9 second
3	3 seconds	0.8 second
4	2 seconds	0.8 second
5	2 seconds	1 second

- (i) Find the average time taken by seeds with parachute to fall.
 - (ii) Find the average time taken by seeds without parachute to fall.
 - (iii) Why do you think seeds have been designed with parachutes?
 - (iv) What is another way for seeds to slow down their fall from a tree?
 - (v) How do seeds like beans and peas scatter away from the parent plant?
 - (vi) Why do some flowers have long feathery flowers?
- (b) You are provided with a bulb, a battery, wires and a switch. With the given materials draw and label a simple circuit showing a lighted bulb.

[3]

Question 30

Answer the following questions.

- (i) 'Sun is the main source of all energies'. How does a girl walking to school depend on the sun's energy?
- (ii) People living in hot places keep their water in earthen pots to keep it cool. How does the earthen pot keep the water cool? [2]
- (iii) There were more people with goitres in 1970 than in 2004. Explain why? [$1\frac{1}{2}$]
- (iv) An egg does not roll out of the nest. Why? [1]
- (v) In a jungle food chain, why do you think there are less tigers than deer? [$1\frac{1}{2}$]
- (vi) If the storm is 6 km away, how many seconds are there between thunder and lightning? (Take 1 km = 3 seconds) [1]