

Write your name here

Surname					Other names					
Pearson BTEC Level 2 Technical Diploma	Centre Number					Learner Registration Number				
	<input type="text"/>	<input type="text"/>	<input type="text"/>	<input type="text"/>	<input type="text"/>	<input type="text"/>	<input type="text"/>	<input type="text"/>	<input type="text"/>	<input type="text"/>

Animal Care

Set task: Unit 4 Animal Welfare

Window for supervised period: Monday 5 March 2018 – Tuesday 6 March 2018 Supervised hours: 2 hours 30 minutes	Paper Reference 21177K
--	----------------------------------

You do not need any other materials.

Total Marks

Instructions

- This booklet contains material for the completion of the set task under supervised conditions.
- The set task is out of 50 marks.
- This booklet is specific to each timetabled period and this material must be issued only to learners who have been entered to take the task in the specified series/timetabled period.
- This booklet should be kept securely until the start of the 2.5-hour supervised assessment. This set task must be undertaken during a maximum window of two days once started.

Turn over ►

P58342A

©2018 Pearson Education Ltd.

1/1/1/1/1/1/1




Pearson

Instructions to Teachers/Tutors and/or Invigilators

The set task **must** be carried out under supervised conditions. The set task can be in more than one supervised session, however it must be completed within two days once commenced.

Learners must complete the set task using this task and answer booklet.

The set task is a formal external assessment and must be conducted with reference to the instructions in this task booklet and the Instructions for Conducting External Assessments (ICEA) document, to ensure that the supervised period is conducted correctly and that learners have the opportunity to carry out the required activities independently. For further details please see the Pearson website.

Teachers/tutors and invigilators are responsible for maintaining security and for reporting issues to Pearson. In particular:

- only permitted materials for the set task can be brought into the supervised environment
- during any permitted break and at the end of the session, materials must be kept securely and no items removed from the supervised environment.

After the session, the teacher/tutor or invigilator will confirm that all work was completed independently as part of the authentication submitted to Pearson.

Outcomes for submission

This task and answer booklet should be submitted to Pearson.

Each learner must complete an authentication sheet.

DO NOT WRITE IN THIS AREA

DO NOT WRITE IN THIS AREA

DO NOT WRITE IN THIS AREA

DO NOT WRITE IN THIS AREA

DO NOT WRITE IN THIS AREA

DO NOT WRITE IN THIS AREA



Instructions for Learners

Read the set task information carefully.

You must plan your time and submit all the required evidence at the end of the supervised period. Your centre will advise you of the timing for the supervised period. You have a total of two and a half hours in this session to complete the task.

You will complete this set task under supervision and your work will be kept securely during any breaks taken.

You must work independently throughout the supervised assessment period and should not share your work with other learners.

Outcomes for submission

You should complete the task in this answer book.

You must complete an authentication sheet.

Set Task Information

Scenario

You are working at the Spring Valley Pet Shop, which has a pet shop licence. The local authority has to inspect the pet shop so that it can renew its licence.

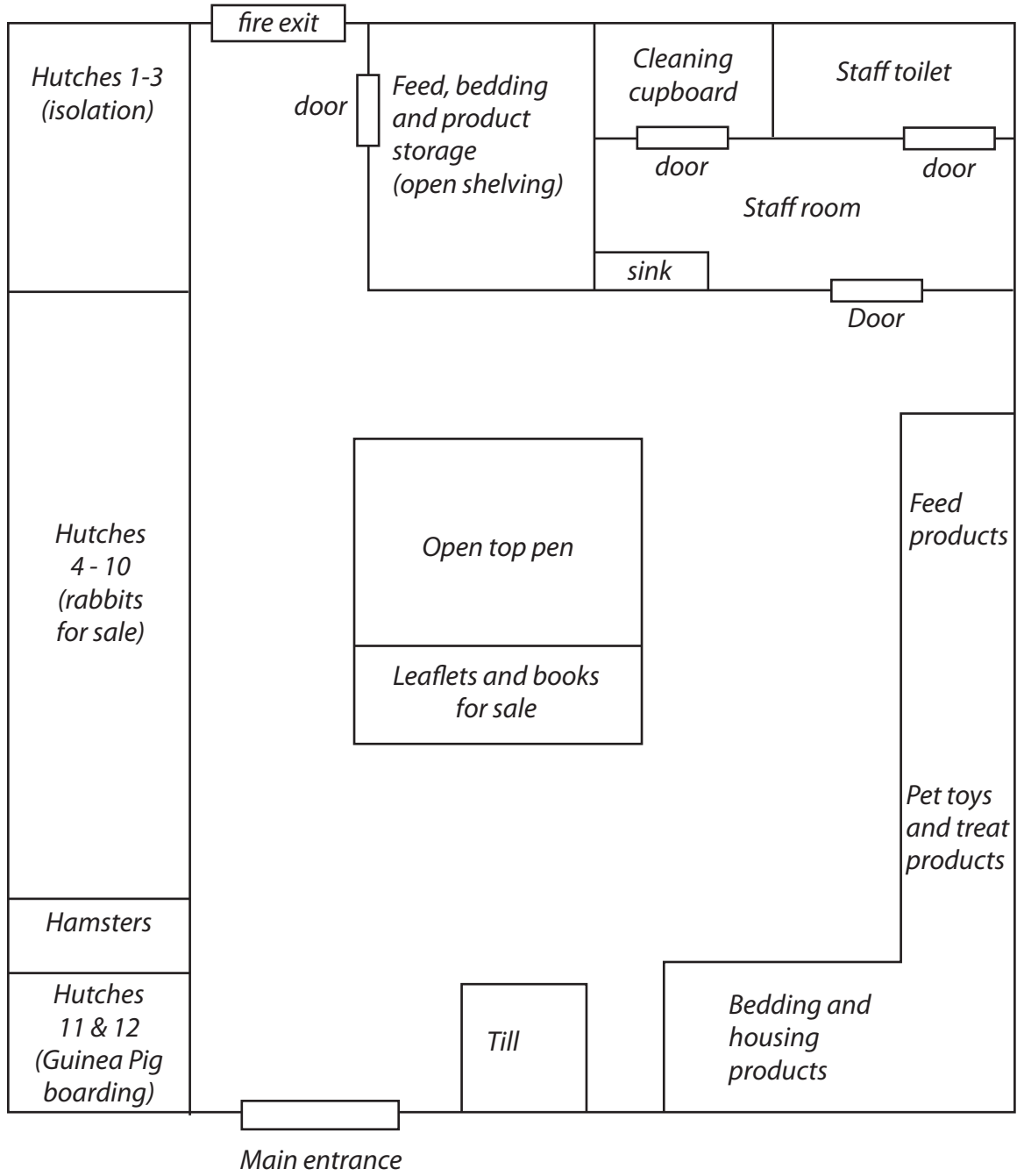
You have been asked to produce a review of the pet shop's routines and procedures, to be discussed at a meeting in preparation for the inspection.

In your review, you must focus on routine procedures, health and safety and legal responsibilities.



Plan of Spring Valley Pet Shop

This diagram is not to scale.



DO NOT WRITE IN THIS AREA

DO NOT WRITE IN THIS AREA

DO NOT WRITE IN THIS AREA

DO NOT WRITE IN THIS AREA

DO NOT WRITE IN THIS AREA

DO NOT WRITE IN THIS AREA



Staffroom Notices

Licensee Information and contact details:
Tom Davies, 15, Shoptown Hill, Tel: 01112 333444 in case of emergencies.

Pet Sales Leader Board

Ellis	7
Miranda	5
Tom	2
Salesperson of the week: Ellis!!	

Training requests

--

Staff Rota

	Monday- Friday	Saturday	Sunday
Tom	8am-12.30pm		
Miranda	12.30pm – 5.30pm		
Ellis		8am-5.30pm	8am-5.30pm

What's in the shop?

Hutch	Rabbits		Hutch	Rabbits	
	How many?	Breed		How many?	Breed
1			7	1	Harlequin
2			8	3	Miniature Lops
3			9	2	Himalayan
4	2	Dutch	10	1	Himalayan
5	2	Dutch	11		GUINEA PIG NAME: Cassandra
6	1	Harlequin	12		GUINEA PIG NAME:



P 5 8 3 4 2 A 0 5 1 6

DO NOT WRITE IN THIS AREA

DO NOT WRITE IN THIS AREA

DO NOT WRITE IN THIS AREA

DO NOT WRITE IN THIS AREA

DO NOT WRITE IN THIS AREA

DO NOT WRITE IN THIS AREA

Staff Tasks and Routines

Daily Routine		Sunday Tasks	Monthly Tasks	
8:30am	Morning staff briefing Check and top up water bottles Make sure pricing is on all books, leaflets and products	<ul style="list-style-type: none"> • Clean out, refill and replace water bottles • Clean out, refill and replace food bowls • Stack empty food and bedding containers outside the door to the feed room ready for recycling 	2nd Thursday:	Clipping and trimming of nails/teeth
9:15am	Move rabbits to open-top pens		4th Thursday:	Visit from vet
10:00am	Prepare feeds Feed animals			
2:00pm	Grooming and observing rabbit health and behaviour			
4.30pm	Put rabbits back in hutches Spot clean the open-top pen Put hay into hutches			
<p>Extra duties this week: Replace and prepare new isolation hutches</p>				
<p>Shop opening hours: 9.30 –5pm Monday to Saturday Closed to public on Sundays</p>				

DO NOT WRITE IN THIS AREA

DO NOT WRITE IN THIS AREA

DO NOT WRITE IN THIS AREA

DO NOT WRITE IN THIS AREA

DO NOT WRITE IN THIS AREA

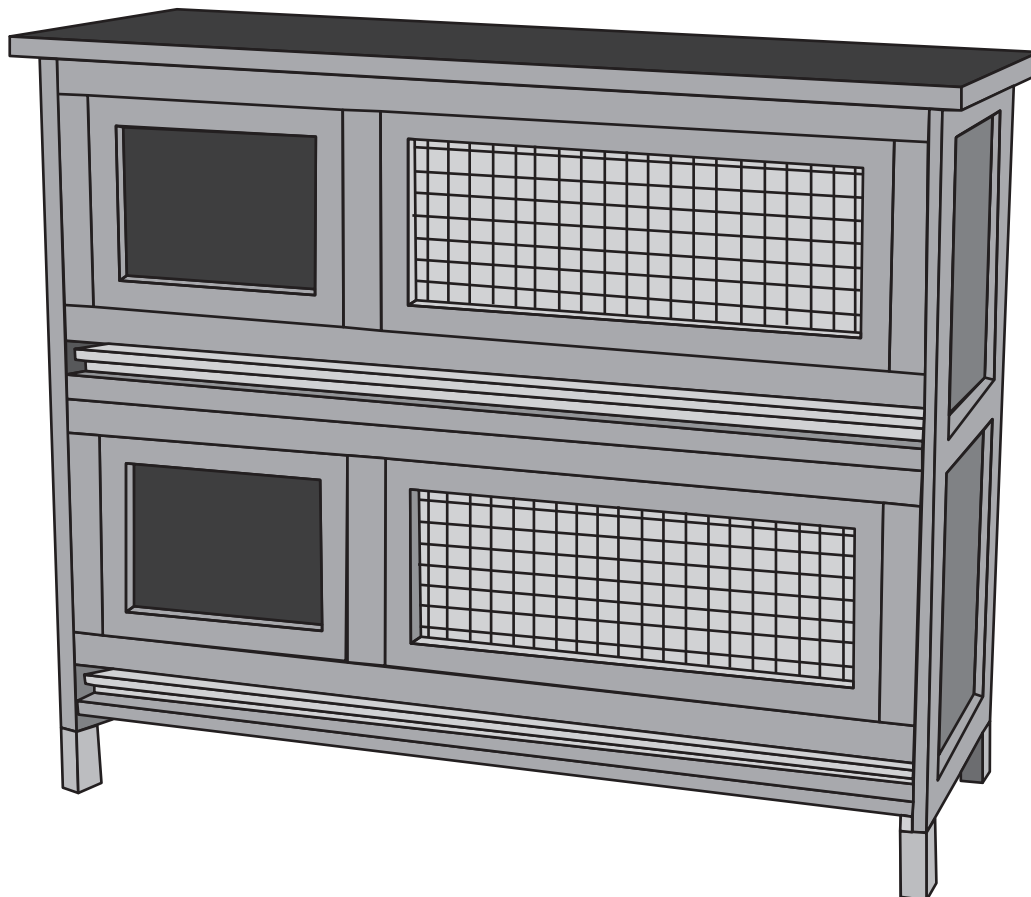
DO NOT WRITE IN THIS AREA



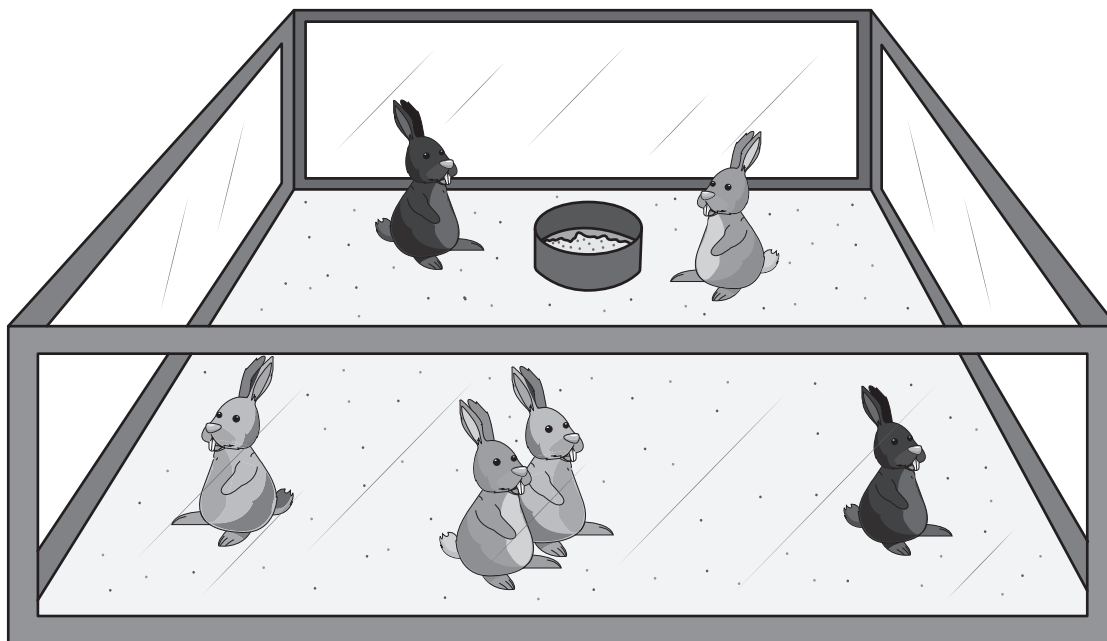
Spring Valley Pet Shop Stocking Information

Floor area of each tier in all hutches is 2m².
Hutches 4-10 have two tiers.

New isolation hutch



Open-top pen for rabbits with sides 50cm high made of wipe-clean, clear plastic.



Council Checklist –Focus for Spring Valley Pet Shop Licence Renewal

1. All purchases of livestock must be entered in a livestock register that includes:
 - i) the name and address of the supplier
 - ii) details of the type and numbers of livestock
 - iii) the date of delivery.
2. Any livestock received must be transported according to the Welfare of Animals (Transport) Order 1997.
3. Animals must not be housed where they can be disturbed by other animals or the public.
4. All animals must have enough time to settle before they can be sold.
5. All stock for sale must be in good health and free from obvious parasites. An isolation facility and procedure to deal with sick animals is required.
6. All feed intended for livestock for sale must be stored in closed containers.
7. All equipment for human use must be stored and cleaned completely separately from livestock equipment.
8. Soiled bedding must be removed from the building and disposed of at least once each week.
9. No animal can be sold to anyone under the age of 12 years, and no sales to those under 16 years of age if there is no parent or guardian with them.
10. Pet care leaflets or similar written instructions must be available free of charge.
11. Emergencies:
 - i) All staff must know the emergency precautions, including arrangements for evacuation of livestock.
 - ii) The licensee must at all times be available and within 20 minutes travelling time in case of an emergency.
12. Entrances and exits must be clear at all times.
13. **Minimum** dimensions:

Animal	Floor area (cm ²)		Cage height (cm)
	Single	Each extra animal	
Hamsters	600	150	20
Rabbits	4000	1000	50

DO NOT WRITE IN THIS AREA

DO NOT WRITE IN THIS AREA

DO NOT WRITE IN THIS AREA

DO NOT WRITE IN THIS AREA

DO NOT WRITE IN THIS AREA

DO NOT WRITE IN THIS AREA



Set Task

You must complete the following task.

Use the information in this booklet to complete your review of the pet shop's routines and procedures.

You will complete your review under the following headings.

Activity 1: Review the routine tasks and procedures at Spring Valley Pet Shop.

(Total for activity 1 = 20 marks)

Activity 2: Review the health and safety requirements at Spring Valley Pet Shop.

(Total for activity 2 = 15 marks)

Activity 3: Review the legal responsibilities at Spring Valley Pet Shop.

(Total for activity 3 = 15 marks)

TOTAL FOR PAPER = 50 MARKS



Answer booklet

Activity 1: Review the routine tasks and procedures at Spring Valley Pet Shop.

In your review, you will need to consider how well the routine tasks and procedures:

- meet animal welfare needs
- follow a logical order
- have an appropriate frequency
- can be completed in the time available.

How do you think routine tasks and procedures should be improved and why?

(20)

.....

.....

.....

.....

.....

.....

.....

.....

.....

.....

.....

.....

.....

.....

.....

.....

.....

.....

.....

.....

.....

.....

.....

.....

DO NOT WRITE IN THIS AREA

DO NOT WRITE IN THIS AREA

DO NOT WRITE IN THIS AREA

DO NOT WRITE IN THIS AREA

DO NOT WRITE IN THIS AREA

DO NOT WRITE IN THIS AREA



DO NOT WRITE IN THIS AREA

DO NOT WRITE IN THIS AREA

DO NOT WRITE IN THIS AREA

DO NOT WRITE IN THIS AREA

DO NOT WRITE IN THIS AREA

DO NOT WRITE IN THIS AREA

Handwriting practice area with 20 horizontal dotted lines.

(Total for Activity 1 = 20 marks)



Activity 2: Review the health and safety requirements at Spring Valley Pet Shop.

In your review, you will need to consider:

- how well health and safety requirements are being met
- any changes to the day-to-day running of the pet shop you would recommend and why.

(15)

A series of horizontal dotted lines for writing the answer to the activity.

DO NOT WRITE IN THIS AREA

DO NOT WRITE IN THIS AREA

DO NOT WRITE IN THIS AREA

DO NOT WRITE IN THIS AREA

DO NOT WRITE IN THIS AREA

DO NOT WRITE IN THIS AREA



DO NOT WRITE IN THIS AREA

DO NOT WRITE IN THIS AREA

DO NOT WRITE IN THIS AREA

DO NOT WRITE IN THIS AREA

DO NOT WRITE IN THIS AREA

DO NOT WRITE IN THIS AREA

Handwriting practice area with ten horizontal dotted lines.

(Total for Activity 2 = 15 marks)



Activity 3: Review the legal responsibilities at Spring Valley Pet Shop.

In your review, you will need to consider:

- how well legal responsibilities are being met
- any changes to the day-to-day running of the pet shop you would recommend and why.

(15)

A large area for writing the answer, consisting of 25 horizontal dotted lines.

DO NOT WRITE IN THIS AREA

DO NOT WRITE IN THIS AREA

DO NOT WRITE IN THIS AREA

DO NOT WRITE IN THIS AREA

DO NOT WRITE IN THIS AREA

DO NOT WRITE IN THIS AREA



DO NOT WRITE IN THIS AREA

DO NOT WRITE IN THIS AREA

DO NOT WRITE IN THIS AREA

DO NOT WRITE IN THIS AREA

DO NOT WRITE IN THIS AREA

DO NOT WRITE IN THIS AREA

(Total for Activity 3 = 15 marks)

TOTAL FOR PAPER = 50 MARKS



DO NOT WRITE IN THIS AREA

DO NOT WRITE IN THIS AREA

DO NOT WRITE IN THIS AREA

BLANK PAGE

