

Write your name here

Surname					Other names						
Pearson BTEC Level 3 Nationals, Extended Certificate, Foundation Diploma, Diploma, Extended Diploma		Centre Number					Learner Registration Number				
		<input type="text"/>	<input type="text"/>	<input type="text"/>	<input type="text"/>	<input type="text"/>	<input type="text"/>	<input type="text"/>	<input type="text"/>	<input type="text"/>	<input type="text"/>

# Equine Management

## Unit 1: Equine Structure, Form and Function

Wednesday 23 May 2018 – Morning <b>Time: 1 hour 30 minutes</b>	Paper Reference <b>20108K</b>
---	----------------------------------

<b>You do not need any other materials.</b>	Total Marks
---	-------------

### Instructions

- Use **black** ink or ball-point pen.
- **Fill in the boxes** at the top of this page with your name, centre number and learner registration number.
- Answer **all** questions.
- Answer the questions in the spaces provided  
– *there may be more space than you need.*

### Information

- The total mark for this paper is 80.
- The marks for **each** question are shown in brackets  
– *use this as a guide as to how much time to spend on each question.*

### Advice

- Read each question carefully before you start to answer it.
- Try to answer every question.
- Check your answers if you have time at the end.

Turn over ►

P59338A

©2018 Pearson Education Ltd.

1/1/1/1/1/1



  
Pearson

Answer ALL questions. Write your answers in the spaces provided.

Figure 1 shows the skeleton of an equine.

1 (a) Label bones A and B in Figure 1 using the boxes given.

(2)

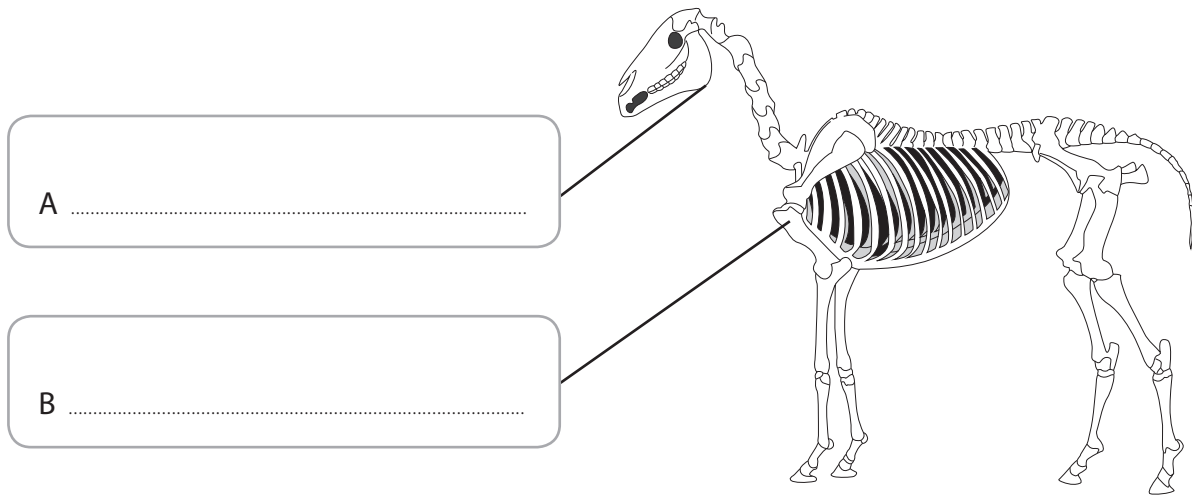


Figure 1

DO NOT WRITE IN THIS AREA

DO NOT WRITE IN THIS AREA

DO NOT WRITE IN THIS AREA

DO NOT WRITE IN THIS AREA

DO NOT WRITE IN THIS AREA

DO NOT WRITE IN THIS AREA



Figure 2 shows the external structure of bone.  
Four structures have been labelled, A, B, C and D.

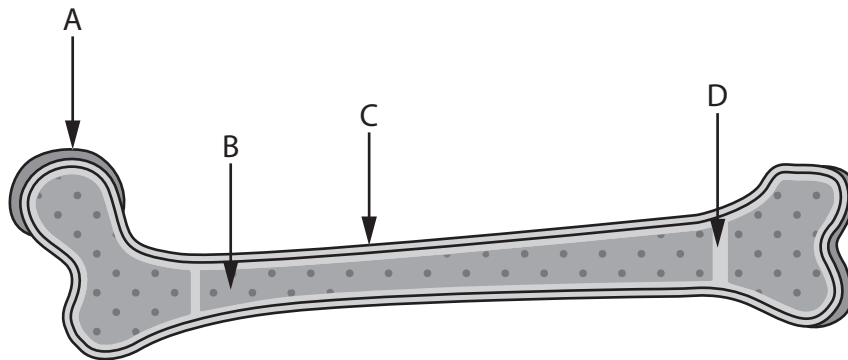


Figure 2

(b) Identify the spongy bone in figure 2.

(1)

- A
- B
- C
- D

(c) Explain **two** functions of bones.

(4)

1 .....

2 .....

(d) Explain what a facet is in relation to bones.

(2)

.....

.....

.....

(Total for Question 1 = 9 marks)



2 Figure 3 shows a cross-section of an equine eye.

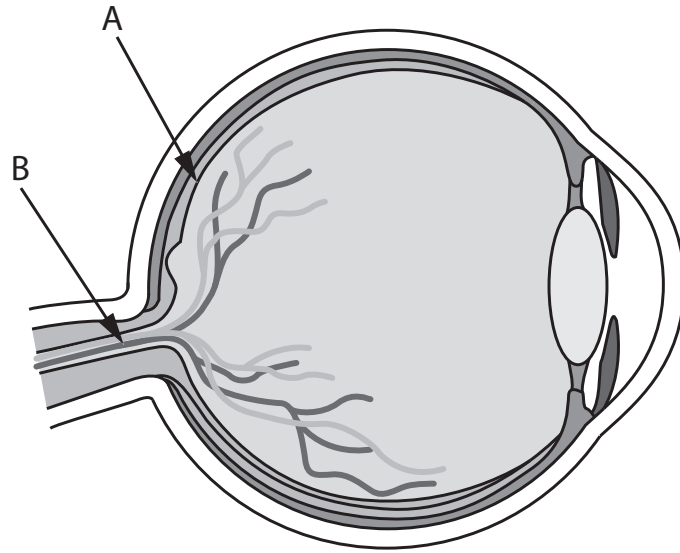


Figure 3

(a) Identify structures A and B in Figure 3.

(2)

A .....

B .....

(b) Explain **two** features of the pupil that aid vision in equines.

(4)

1 .....

2 .....

DO NOT WRITE IN THIS AREA

DO NOT WRITE IN THIS AREA

DO NOT WRITE IN THIS AREA

DO NOT WRITE IN THIS AREA

DO NOT WRITE IN THIS AREA

DO NOT WRITE IN THIS AREA



(c) Describe the role of the tapetum lucidum.

(4)

.....

.....

.....

.....

.....

.....

.....

.....

.....

**(Total for Question 2 = 10 marks)**

DO NOT WRITE IN THIS AREA

DO NOT WRITE IN THIS AREA

DO NOT WRITE IN THIS AREA

DO NOT WRITE IN THIS AREA

DO NOT WRITE IN THIS AREA

DO NOT WRITE IN THIS AREA



3 (a) Explain **one** behavioural sign of a mare being in heat.

(2)

.....

.....

.....

(b) Describe the process of fertilisation of the egg during reproduction.

(4)

.....

.....

.....

.....

.....

.....

.....

DO NOT WRITE IN THIS AREA

DO NOT WRITE IN THIS AREA

DO NOT WRITE IN THIS AREA

DO NOT WRITE IN THIS AREA

DO NOT WRITE IN THIS AREA

DO NOT WRITE IN THIS AREA





4 (a) Describe the location of the pituitary gland in equines.

(2)

.....

.....

.....

(b) Explain **two** links between the pituitary gland and reproduction.

(4)

1 .....

.....

.....

2 .....

.....

.....

(c) Describe the effect of antidiuretic hormone (ADH) in equines.

(4)

.....

.....

.....

.....

.....

.....

.....

.....

.....

.....

(Total for Question 4 = 10 marks)

DO NOT WRITE IN THIS AREA

DO NOT WRITE IN THIS AREA

DO NOT WRITE IN THIS AREA

DO NOT WRITE IN THIS AREA

DO NOT WRITE IN THIS AREA

DO NOT WRITE IN THIS AREA









(d) Compare the structure and function of ligaments and tendons.

(4)

.....

.....

.....

.....

.....

.....

.....

.....

.....

**(Total for Question 6 = 13 marks)**

DO NOT WRITE IN THIS AREA

DO NOT WRITE IN THIS AREA

DO NOT WRITE IN THIS AREA

DO NOT WRITE IN THIS AREA

DO NOT WRITE IN THIS AREA

DO NOT WRITE IN THIS AREA



P 5 9 3 3 8 A 0 1 1 1 6

7 Effective thermoregulation is essential for equines.

(a) State **two** behavioural changes that may be seen when a horse becomes too cold. (2)

1 .....

2 .....

(b) Explain how vasodilation helps maintain a constant temperature. (4)

.....

.....

.....

.....

.....

.....

.....

.....

.....

.....

.....

(c) Describe the role of hair in maintaining an equine's temperature. (4)

.....

.....

.....

.....

.....

.....

.....

.....

.....

.....

.....

(Total for Question 7 = 10 marks)

DO NOT WRITE IN THIS AREA

DO NOT WRITE IN THIS AREA

DO NOT WRITE IN THIS AREA

DO NOT WRITE IN THIS AREA

DO NOT WRITE IN THIS AREA

DO NOT WRITE IN THIS AREA







DO NOT WRITE IN THIS AREA

DO NOT WRITE IN THIS AREA

DO NOT WRITE IN THIS AREA

DO NOT WRITE IN THIS AREA

DO NOT WRITE IN THIS AREA

DO NOT WRITE IN THIS AREA

**BLANK PAGE**



DO NOT WRITE IN THIS AREA

DO NOT WRITE IN THIS AREA

DO NOT WRITE IN THIS AREA

DO NOT WRITE IN THIS AREA

DO NOT WRITE IN THIS AREA

DO NOT WRITE IN THIS AREA

**BLANK PAGE**



P 5 9 3 3 8 A 0 1 5 1 6

DO NOT WRITE IN THIS AREA

DO NOT WRITE IN THIS AREA

DO NOT WRITE IN THIS AREA

**BLANK PAGE**

