

**Pearson BTEC Level 3 Nationals Extended Certificate**

**Engineering**

**Unit 3: Engineering Product Design and  
Manufacture**

**Part B**

Window for Supervised Period: 08/01/2018 to  
19/01/2018

**Information Booklet**

Paper Reference

**31708H**

**Do not return this Information Booklet with the question paper.**

**Instructions**

- You will need the information in this booklet to complete the task.
- Read the information carefully.
- You must **not** write your answers in this booklet.
- Only your answers given in the task booklet in **Part B** will be marked.

**P58679A**

©2018 Pearson Education Ltd.

1/1/1/1/1/1/1/1/1



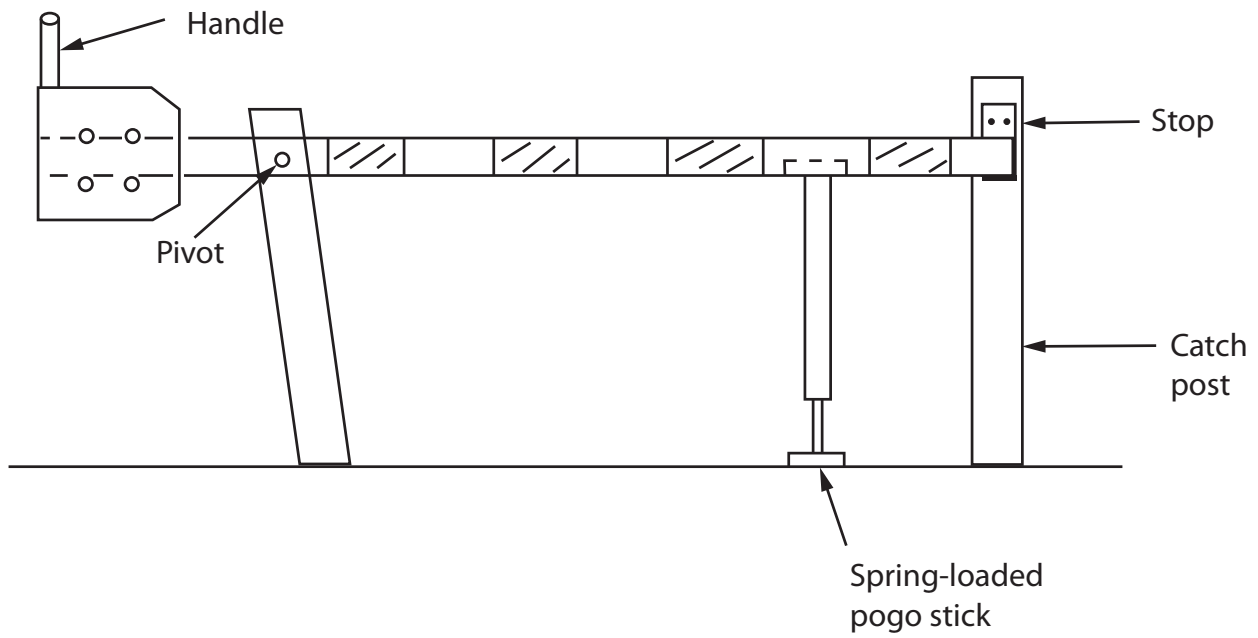
*Turn over* ►



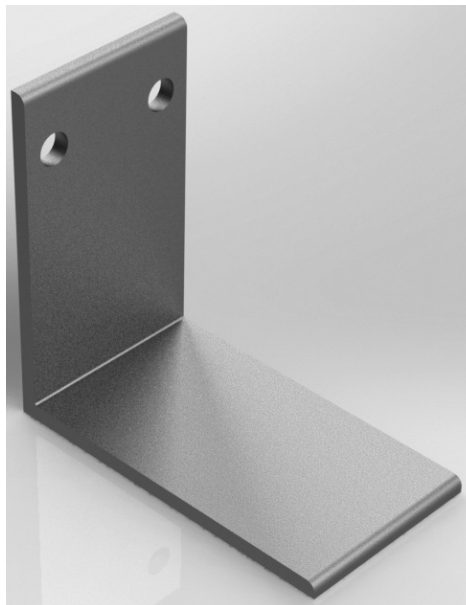
**Pearson**



### Manual Arm Access Barrier

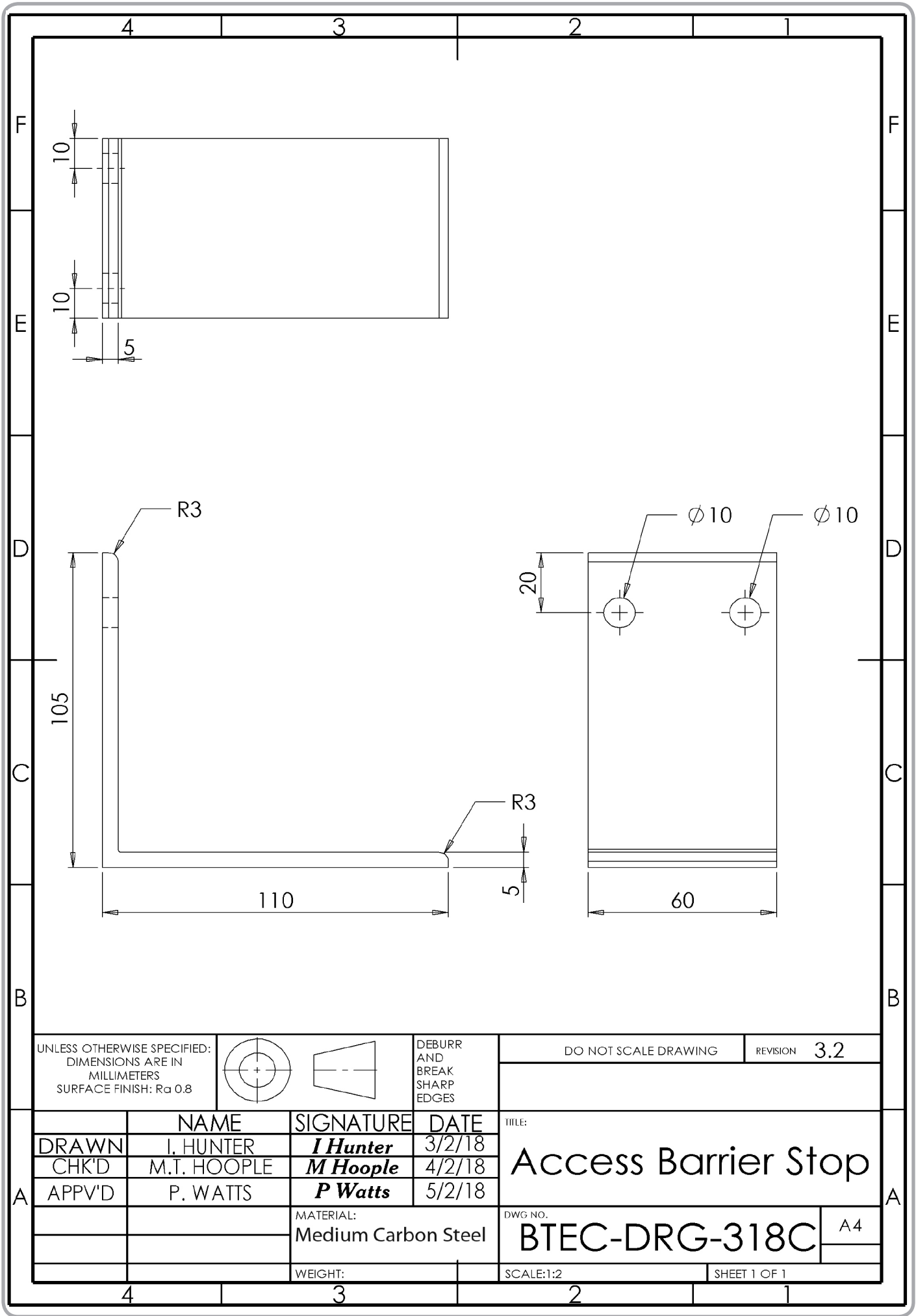


**Overall Manual Arm Access Barrier Dimensions: L= 6 m, W= 0.35 m, H= 0.85 m**

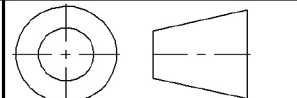


**Access Barrier Stop**





UNLESS OTHERWISE SPECIFIED:  
DIMENSIONS ARE IN  
MILLIMETERS  
SURFACE FINISH: Ra 0.8



DEBURR  
AND  
BREAK  
SHARP  
EDGES

DO NOT SCALE DRAWING

REVISION 3.2

	NAME	SIGNATURE	DATE
DRAWN	I. HUNTER	<i>I Hunter</i>	3/2/18
CHK'D	M.T. HOOPLE	<i>M Hoople</i>	4/2/18
APPV'D	P. WATTS	<i>P Watts</i>	5/2/18

TITLE:  
**Access Barrier Stop**

MATERIAL: Medium Carbon Steel	
WEIGHT:	

DWG NO. <b>BTEC-DRG-318C</b>	A4
SCALE:1:2	SHEET 1 OF 1



**BLANK PAGE**

