

Write your name here

Surname	Other names
---------	-------------

Pearson BTEC Level 1/Level 2 First Award	Centre Number <table border="1" style="width: 100%; height: 20px; border-collapse: collapse;"> <tr> <td style="width: 12.5%;"></td> <td style="width: 12.5%;"></td> <td style="width: 12.5%;"></td> <td style="width: 12.5%;"></td> <td style="width: 12.5%;"></td> <td style="width: 12.5%;"></td> <td style="width: 12.5%;"></td> <td style="width: 12.5%;"></td> </tr> </table>									Learner Registration Number <table border="1" style="width: 100%; height: 20px; border-collapse: collapse;"> <tr> <td style="width: 12.5%;"></td> <td style="width: 12.5%;"></td> <td style="width: 12.5%;"></td> <td style="width: 12.5%;"></td> <td style="width: 12.5%;"></td> <td style="width: 12.5%;"></td> <td style="width: 12.5%;"></td> <td style="width: 12.5%;"></td> </tr> </table>								

Animal Care

Unit 1: Animal Health

Monday 15 May 2017 – Afternoon Time: 1 hour	Paper Reference 21883G
---	----------------------------------

You do not need any other materials.	Total Marks
---	-------------

Instructions

- Use **black** ink or ball-point pen.
- **Fill in the boxes** at the top of this page with your name, centre number and learner registration number.
- Answer **all** questions.
- Answer the questions in the spaces provided
– *there may be more space than you need.*

Information

- The total mark for this paper is 50.
- The marks for **each** question are shown in brackets
– *use this as a guide as to how much time to spend on each question.*

Advice

- Read each question carefully before you start to answer it.
- Try to answer every question.
- Check your answers if you have time at the end.

Turn over ►

P51430RA

©2017 Pearson Education Ltd.

1/1/1/1/1




Pearson

Answer ALL questions.

Some questions must be answered with a cross in a box ☒. If you change your mind about an answer, put a line through the box ☒ and then mark your new answer with a cross ☒.

1 Identify which **one** of these symptoms would indicate the presence of mites.

- A Blindness
- B Hair loss
- C Lameness
- D Vomiting

(Total for Question 1 = 1 mark)

2 Identify which **one** of the following animals will be affected by Marek's disease?

- A Dog
- B Bearded dragon
- C Chicken
- D Goat

(Total for Question 2 = 1 mark)

3 Identify which **two** of the following signs would indicate that a dog's eyes were healthy.

- A Crusty discharge
- B Visible third eyelid
- C Weeping
- D Clear and bright
- E Open and close freely

(Total for Question 3 = 2 marks)

DO NOT WRITE IN THIS AREA

DO NOT WRITE IN THIS AREA

DO NOT WRITE IN THIS AREA

DO NOT WRITE IN THIS AREA

DO NOT WRITE IN THIS AREA

DO NOT WRITE IN THIS AREA



4 Identify which **two** of the following are zoonotic diseases.

- A Ringworm
- B Enterotoxemia
- C Salmonella
- D Myxomycosis
- E Parvovirus

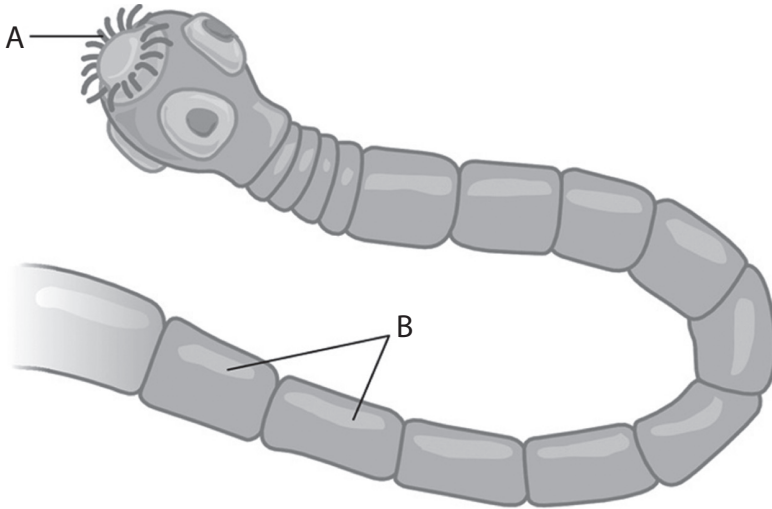
(Total for Question 4 = 2 marks)

5. Identify which body part can be affected by tartar.

- A Teeth
- B Claws
- C Ears
- D Genitals

(Total for Question 5 = 1 mark)

6 Identify the parts of the parasite labelled as **A** and **B**.



A

B

(Total for Question 6 = 2 marks)



P 5 1 4 3 0 R A 0 3 1 2

7 State **one** symptom of orf in goats.

.....
.....

(Total for Question 7 = 1 mark)

8 State **two** signs of an unhealthy coat in rabbits.

1

.....

2

.....

(Total for Question 8 = 2 marks)

9 State **two** symptoms of feline herpes virus in cats.

.....

.....

.....

.....

(Total for Question 9 = 2 marks)

10 State **two** methods of preventing overgrown nails in dogs.

1

.....

2

.....

(Total for Question 10 = 2 marks)

DO NOT WRITE IN THIS AREA

DO NOT WRITE IN THIS AREA

DO NOT WRITE IN THIS AREA

DO NOT WRITE IN THIS AREA

DO NOT WRITE IN THIS AREA

DO NOT WRITE IN THIS AREA



11 Describe **one** reason why you would need to quarantine a dog.

.....
.....
.....
.....

(Total for Question 11 = 2 marks)

12 While working at a rescue kennels you notice that one of the dogs has patches of thickened skin around its neck and shoulders.

Explain how the skin thickening could be caused by flea bites.

.....
.....
.....
.....

(Total for Question 12 = 2 marks)

13 State **one** possible reason for a decrease in an animal's pulse rate.

.....
.....

(Total for Question 13 = 1 mark)

14 State **two** reasons why you may get an incorrect result when weighing an animal.

1

2

(Total for Question 14 = 2 marks)

DO NOT WRITE IN THIS AREA

DO NOT WRITE IN THIS AREA

DO NOT WRITE IN THIS AREA

DO NOT WRITE IN THIS AREA

DO NOT WRITE IN THIS AREA

DO NOT WRITE IN THIS AREA



P 5 1 4 3 0 R A 0 5 1 2

15 State the 1981 law that names notifiable diseases in animals.

.....
.....

(Total for Question 15 = 1 mark)

16 State **two** symptoms of canine distemper.

1
.....

2
.....

(Total for Question 16 = 2 marks)

17 Healthy bearded dragon faeces is black and white.

Explain **two** changes to faeces that would indicate ill health in bearded dragons.

1
.....

.....
.....

2
.....

.....
.....

(Total for Question 17 = 4 marks)

DO NOT WRITE IN THIS AREA

DO NOT WRITE IN THIS AREA

DO NOT WRITE IN THIS AREA

DO NOT WRITE IN THIS AREA

DO NOT WRITE IN THIS AREA

DO NOT WRITE IN THIS AREA



18 (a) Explain how sheep ticks act as vectors for Lyme disease.

(2)

.....

.....

.....

.....

(b) Explain **one** reason why sheep ticks are commonly found inside the ears of dogs.

(2)

.....

.....

.....

.....

(c) Explain **two** disadvantages of using topical liquids as a method of administering tick treatments.

(4)

1

.....

.....

.....

2

.....

.....

.....

(Total for Question 18 = 8 marks)



19 Explain **two** behaviours you might see if a rabbit was becoming stressed.

1
.....
.....

2
.....
.....

(Total for Question 19 = 4 marks)

20 You work in a reptile shop. Two of your customers have recently complained of suffering from stomach upsets after buying bearded dragons from you.

Discuss the advice you should give to the customers to prevent this from happening again.

.....
.....
.....
.....
.....
.....
.....
.....
.....
.....
.....
.....
.....
.....
.....
.....

DO NOT WRITE IN THIS AREA

DO NOT WRITE IN THIS AREA

DO NOT WRITE IN THIS AREA

DO NOT WRITE IN THIS AREA

DO NOT WRITE IN THIS AREA

DO NOT WRITE IN THIS AREA



DO NOT WRITE IN THIS AREA

DO NOT WRITE IN THIS AREA

DO NOT WRITE IN THIS AREA

DO NOT WRITE IN THIS AREA

DO NOT WRITE IN THIS AREA

DO NOT WRITE IN THIS AREA

Blank writing area with horizontal dotted lines.

(Total for Question 20 = 8 marks)

TOTAL FOR PAPER = 50 MARKS



P 5 1 4 3 0 R A 0 9 1 2



DO NOT WRITE IN THIS AREA

DO NOT WRITE IN THIS AREA

DO NOT WRITE IN THIS AREA

DO NOT WRITE IN THIS AREA

DO NOT WRITE IN THIS AREA

DO NOT WRITE IN THIS AREA

BLANK PAGE



DO NOT WRITE IN THIS AREA

DO NOT WRITE IN THIS AREA

DO NOT WRITE IN THIS AREA

DO NOT WRITE IN THIS AREA

DO NOT WRITE IN THIS AREA

DO NOT WRITE IN THIS AREA

BLANK PAGE



P 5 1 4 3 0 R A 0 1 1 1 2

DO NOT WRITE IN THIS AREA

DO NOT WRITE IN THIS AREA

DO NOT WRITE IN THIS AREA

BLANK PAGE

