

The Universities of Melbourne, Adelaide, Western Australia and Tasmania, the Minister for Education and Youth Affairs in New South Wales, and the Minister for Education in Queensland.

SPEECH AND PERFORMANCE THEORY

FOURTH GRADE

2:00 PM TO 4:00PM

THURSDAY 21 AUGUST 2003

Time Allowed : Two hours

NB. The candidate's written expression will be taken into consideration.

1. (a) Transcribe the following sentence from phonetics into English

'dount fə'get tə put 'tʃi:z in maɪ 'lʌntʃ 'bʊks 'mʌm

[5 marks]

- (b) Transcribe the following two short sentences into phonetic script representing Cultivated Australian speech. Indicate primary stress, vowel length, linking [r] and dark [ɪ] as they occur.

(i) There'll be too many if her aunt is coming too.

(ii) Well done. That was a great achievement.

[10 marks]

- (c) (i) Describe the formation of all vowel sounds in the following sentence:

The grey cat leapt upstairs fast.

[7 marks]

- (ii) Give an example of each of the following consonants

A bi-labial plosive consonant

A labio-dental fricative consonant

An alveolar lateral consonant

[3 marks]

2. (a) "Good posture and relaxation are the basis for good voice quality."
- (i) On the back page of this paper is a sketch of two figures. Using the sketch to help demonstrate your meaning, suggest improvements that can be made to the posture of each figure. [15 marks]
- (ii) Explain how good, relaxed posture helps the voice. [15 marks]

Remember to detach the back page and hand it in with your answer booklet

- (b) Describe how breathing affects the resonance of the voice. [10 marks]
3. You have a part in your drama group's dramatisation adapted from *The Hobbit* by J. R. R. Tolkien. In this scene Bilbo meets Gollum underground.

Read the scene and answer the questions that follow.

Text – unpublished dramatisation of J.R.R. Tolkien *The Hobbit* (London: Allen and Unwin, 1937)

Discuss the staging of this scene.

- (a) Draw a sketch or diagram of how the stage will be set to suggest the damp, underground scene.
- (b) What lighting and sound effects and/or music will be needed to suggest the atmosphere?
- (c) What costumes and/or make-up will be used for Bilbo and Gollum?
- (d) Consider the voice and movement of each character.
- (e) How will you introduce action into the scene?
- (f) How will you make Bilbo disappear?

Diagrams and drawings may be used to illustrate your answer. [25 marks]

4. (a) (i) Sketch a Greek amphitheatre. How did actors ensure they could be heard and seen adequately in the large open air space.
- (ii) Use further sketches to show the masks, shoes and costume worn by the actors when they appeared on stage. [13 marks]

(b) Identify **three** of the following, and write notes on their importance to Greek theatre.

A dithyramb

Euripides

the unities of time, space, and action

the protagonist and antagonist

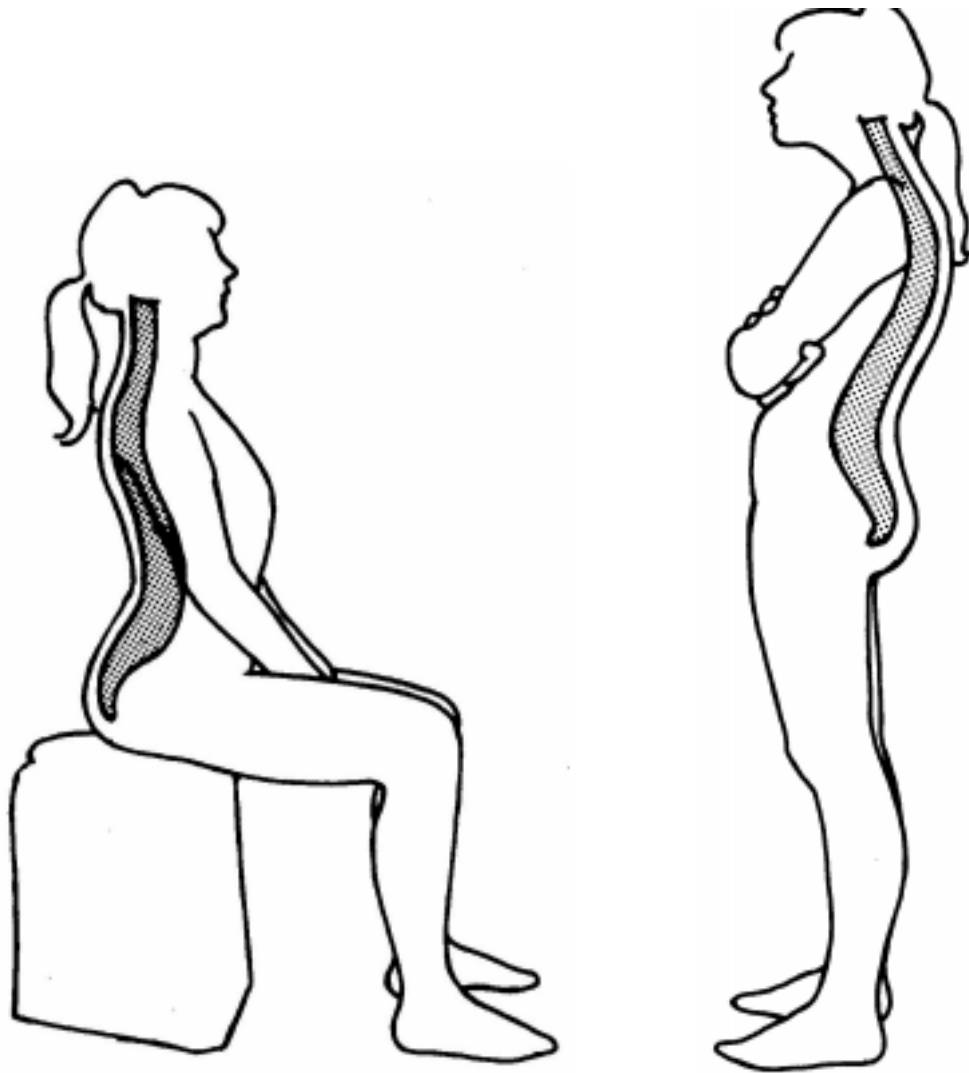
catharsis

the chorus

the Festival of Dionysus

the orchestra

[12 marks]



**Use this diagram of posture to indicate your improvements.
Remember to detach it and hand it in with your examination
answer booklet.**