

AGA KHAN UNIVERSITY EXAMINATION BOARD

HIGHER SECONDARY SCHOOL CERTIFICATE

CLASS XI EXAMINATION

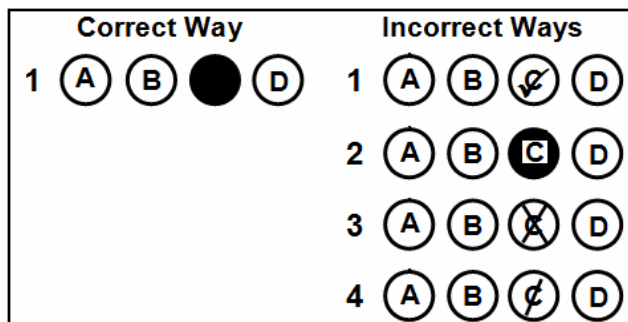
MAY 2012

English Compulsory Paper I

Time allowed: 50 minutes Marks 40

INSTRUCTIONS

1. Read each question carefully.
2. Answer the questions on the separate answer sheet provided. DO NOT write your answers on the question paper.
3. There are 100 answer numbers on the answer sheet. Use answer numbers 1 to 40 only.
4. In each question there are four choices A, B, C, D. Choose ONE. On the answer grid black out the circle for your choice with a pencil as shown below.



Candidate's Signature

5. If you want to change your answer, ERASE the first answer completely with a rubber, before blacking out a new circle.
6. DO NOT write anything in the answer grid. The computer only records what is in the circles.

Listening Comprehension Section

In this section you will hear two recordings. Each one will be played twice.

Listen carefully to the first recording then read the 10 questions. You will have two minutes' reading time.

The recording will then be replayed. You can make notes on your question paper.

When the recording has finished, enter your answers on your separate answer sheet. You will have four minutes to pencil in your answers.

Follow the instruction on the front page of Paper I to show which of the options; A, B, C, or D you have selected for each question.

Listening Passage I

This passage is a conversation between a husband and wife about television programs.

Source: www.esl-lab.com

Now listen to the recording.

Mark your responses to these questions on your multiple choice answer sheet.

1. The main topic of the conversation is
 - A. T.V programs aired at night.
 - B. demerits of reality shows.
 - C. documentaries on animals.
 - D. shows that are aired at 7:00.
2. All of the following indicate the description of reality shows as given in the passage EXCEPT
 - A. reality shows are not aired on Channel 5.
 - B. people eat live fish to impress others.
 - C. people handle snakes.
 - D. people do crazy things.
3. The man is interested in watching
 - A. reality shows.
 - B. documentaries.
 - C. suspense and action.
 - D. star wars.
4. The man said he wanted to sleep because he
 - A. was feeling sleepy.
 - B. had to get up early.
 - C. wanted to read the newspaper in the morning.
 - D. did not want to watch T.V.
5. The woman wants to watch a home improvement show because it
 - A. provides good entertainment.
 - B. helps in making new things.
 - C. gives useful tips.
 - D. beautifies the home.
6. The man changed his mind because he wanted to watch
 - A. suspense and action.
 - B. a reality show.
 - C. a sports channel.
 - D. a basketball game.
7. The fact which can be extracted from the conversation about the couple's home is that
 - A. several things in the home need to be fixed.
 - B. reality shows are not appreciated in the home.
 - C. they like to watch basketball matches.
 - D. the home has several bathrooms.
8. Which of the following correctly indicates the timing of the 'home improvement show'?
 - A. 7 o' clock at channel 5
 - B. 7 o' clock at channel 2
 - C. 2 o' clock at channel 9
 - D. 9 o' clock at channel 2
9. We can infer from the passage that the man is very fond of
 - A. fixing bathrooms.
 - B. watching TV with his wife.
 - C. watching basketball.
 - D. sleeping early.
10. The passage ended with the man and woman
 - A. eating popcorn.
 - B. deciding to watch TV.
 - C. talking about sleeping early.
 - D. watching various TV programs.

PLEASE DO NOT TURN OVER THE PAGE UNTIL YOU ARE TOLD

Now, we will play the second recording. It will also be played twice.

Listen carefully to the first playing, and then read questions 11 to 20. You will have two minutes' reading time. The recording will then be replayed.

When the recording has finished, enter your answers on your separate answer sheet. You will have four minutes to pencil in your answers.

Listening Passage II

The passage is an interesting broadcast about 'Venice', which is a city in Italy.

Source: Adapted from Children's Magazine India Times

Now listen to the recording.

Mark your responses to these questions on your multiple choice answer sheet.

11. Which of the following indicates something unusual about Venice?
- A. It has many festivals.
 - B. People wear fancy dresses.
 - C. Boat races are celebrated.
 - D. It has canals instead of roads.
12. The main way of getting around Venice is by
- A. canal.
 - B. bridge.
 - C. boat.
 - D. road.
13. Which of the following is a FACT mentioned in the passage?
- A. Venice is situated near the Antarctic.
 - B. Venice is a stunning city.
 - C. The Grand Canal has 118 canals.
 - D. Venice is built on 118 islands.
14. The culture of Venice is expressed in its
- A. environment.
 - B. winged lion.
 - C. lagoon.
 - D. festivals.
15. All of the following are associated with the ten-day carnival in Venice EXCEPT
- A. unusual costumes.
 - B. unusual shoes.
 - C. colourful masks.
 - D. boat rides.
16. Which of the following CORRECTLY indicates the waterways of Venice?
- A. There is a Grand Canal and 180 smaller passages.
 - B. There are 118 canals and few water passages.
 - C. There are 180 waterways and one Grand Canal.
 - D. There are 300 mm thick canals and many bridges.
17. While celebrating the May festival, Venetians
- A. wear fancy masks.
 - B. walk or jump on bridges.
 - C. participate in a boat race.
 - D. play hide and seek.
18. The city of Venice is sinking because of its
- A. bridges.
 - B. weight.
 - C. environmental pollution.
 - D. huge population.
19. At the end of the passage, the author makes a wish that Venice would
- A. display its wonderful collection of arts.
 - B. have stunning churches built.
 - C. gain its past glory.
 - D. never go under water.
20. The passage is mainly about the
- A. Grand Canal of Venice.
 - B. environment of Venice.
 - C. threats faced by Venice.
 - D. remarkable things in Venice.

PLEASE DO NOT TURN OVER THE PAGE UNTIL YOU ARE TOLD

Reading Comprehension Section

This section has two reading passages; each followed by 10 multiple choice questions. You have 25 minutes' time for this section. You are advised to spend approximately 12 minutes on each of the given passages.

Read the passage carefully and then answer the multiple choice questions which follow:

Reading Passage I

The story seems to begin in Ethiopia, where the coffee berry grew wild. Goatherds there noted that goats which ate leaves and berries of the plant remained awake all night. The Arabs claim that they developed the plant in 675 AD. Consumed originally as a food, it would take on the character of a medicinal and eventually that of a social drink.

- 5 The coffee tree grows to a height of 14 to 20 feet, producing (along with bright green leaves and white flowers) a berry which, as it matures, goes from green to yellow to red. Harvested red, they are placed in water so that the good berries will sink and all the debris will float. The berries are then pulped to extract the beans, there being two beans per berry, the beans having a bluish-green colour.

- 10 Next they are dried and cured for several weeks, becoming hard and yellow. Roasting is next, at the high temperature of 900 degrees Fahrenheit for 17 minutes, then they are stored (aged) and eventually ground into coarse granules. One is obliged to wonder how this all came about: who was the first to decide that roasting the beans would do anything good to them?

The decaffeinated type of coffee is made by treating the green beans with chlorine-based solvents prior to the rest of the process.

- 15 There are some 30 species of the plant, the most important being: Brazilian, Mild and Robusta. Discovered by Arabs travelling in Ethiopia in the 13th century, it was taken to Arabia and flourished at Mocha in Yemen, where the Arabic name for it was "*qahwah*" and from that word to "coffee". Its popularity steadily increased. In the 1500s it arrived in Turkey and in Italy in the 1600s. About this time, establishments for preparing the drink ("coffee houses") sprang up all over Europe.
- 20 In 1714 the French succeeded in bringing a live cutting to their island of Martinique, and, from that single plant, coffee growing spread throughout Central and South America. Meanwhile, the Portuguese introduced the plant into their colony of Brazil, where it flourished. In fact, Brazil today produces 25% of the world's coffee, and Central and South America combined produce two-thirds of the world's supply. Since coffee grows in Java and Southeast Asia, an alternate name for coffee is "java".

Then Starbucks came along and showed how coffee could be jazzed up by adding other things to it.

Source: Adapted from the essay " All You Need to Know about Coffee"

Mark your responses to these questions on your multiple choice answer sheet.

21. Which of the following steps is carried out to make coffee tastier?
- A. Coffee beans are roasted
 - B. Coffee is mixed with other ingredients
 - C. Coffee is decaffeinated
 - D. Coffee berries are dried and cured
22. Which of the following indicates the main theme of this passage?
- A. Contravention of coffee berries
 - B. Extraction of coffee in ancient times
 - C. Uses of coffee
 - D. Origin and spread of coffee
23. Which of the following continents fulfils most of the world's demand for coffee?
- A. Asia
 - B. America
 - C. Africa
 - D. Europe
24. In line 11, the word 'obliged' is closest in meaning to
- A. suggested.
 - B. compelled.
 - C. amused.
 - D. informed.
25. Coffee berry is used to make all of the following EXCEPT
- A. food.
 - B. detergent.
 - C. medicine.
 - D. beverage.
26. Which of the following is CORRECT?
- A. Yellow berries are pulped to extract green beans.
 - B. There are two beans in one coffee berry.
 - C. Roasting the beans would not do any good to them.
 - D. Coffee should be cooked for seventeen minutes.
27. Which of the processes is used to decaffeinate the coffee?
- A. The berries are ground into granules.
 - B. The berries are placed in water.
 - C. The berries are stored for few months.
 - D. The berries are treated with a chlorine-based solvent.
28. The colour of the ripe berries from which coffee is made is
- A. green.
 - B. brown.
 - C. red.
 - D. yellow.
29. Which of the following is another name for coffee?
- A. Qahwah
 - B. Mocha
 - C. Starbucks
 - D. Roasted berry drink
30. Coffee beans became common in Europe during
- A. the 1500s.
 - B. the 1600s.
 - C. the 13th century.
 - D. 675 AD.

PLEASE TURN OVER THE PAGE

Now read the following passage carefully.

Reading Passage II

Around the Equator, the Earth receives sunshine all year round. But the poles are a part of the Earth which is curved away from the sun and so the polar regions are cold.

5 The earth revolves round the sun, and is slightly tilted. It is this tilt of the earth which gives us seasons. The north pole is at the centre of the Arctic ocean. There is no land at the north pole, only ice. In places the ice is as much as three kilometres thick. The land around the Arctic ocean is called the Tundra. The Tundra is a flat or gently sloping icy desert. And just below the surface the land is always frozen, even in summer. This phenomenon is called permafrost.

10 In the Arctic some plants manage to grow on the Tundra. There are no trees on the Tundra, as it is too cold for them to grow. But there are some very small shrubs. These include heathers, dwarf willows and birches. The most common plants in the drier areas are lichens. The most abundant of these is called 'reindeer moss', although it is really a lichen. The other plants of the Tundra are small and widely scattered. To anchor them against the strong winds they have long top roots. The flowering plants grow in a small cushion. Their leaves are usually leathery or waxy. This helps to stop the leaves from wear in the drying winds. All of these plants have to withstand being buried in
15 the snow and ice during the long Arctic winter.

The long dark winters and cold weather make life very difficult in the Arctic. But there are animals which have adapted to living there. One of these animals is the caribou; tamed caribou are called reindeer.

20 The fiercest animal of the Tundra is the polar bear. Its thick coat protects it from cold. The polar bear's feet are covered with fur so that it can grip on the ice and snow. Polar bears live mainly on fish, seals and birds. Lemmings are found on the Tundra in large numbers; they feed on plants.

Only a few birds such as the ptarmigan and snowy owl live on the Tundra all the year round. In the winter they grow more feathers to keep themselves warm. The animals also grow fur that is thicker during the winter; extra fat is also stored on the bodies of the animals that live on the Tundra.

Source: The Daily DAWN

Mark your responses to these questions on your multiple choice answer sheet.

31. Which of the following is an appropriate title for the passage?
- A. Permafrost in the Tundra region
 - B. Animals of the Tundra region
 - C. Survival in the Tundra region
 - D. Tundra - a desert
32. All of the following statements are incorrect EXCEPT
- A. there is no plantation in the Tundra.
 - B. squirrels hibernate for 9 months in a year.
 - C. caribou and reindeer are tamed animals.
 - D. the Tundra is an icy desert.
33. Which of the following is INCORRECT about the plants in the Tundra region?
- A. They are usually buried in the snow.
 - B. They are widely dispersed.
 - C. They are found in clusters.
 - D. They are anchored with long top roots.
34. During summers the region develops
- A. permafrost.
 - B. shrubs.
 - C. trees.
 - D. moss.
35. Which of the following is INCORRECT about the Tundra?
- A. The Tundra is a desert full of ice.
 - B. The Tundra is situated around the Arctic.
 - C. Various animals live in the Tundra.
 - D. Vegetation is absent in the Tundra.
36. Animals of the Tundra protect themselves from the cold through
- A. the leathery texture of their skin.
 - B. eating warm meat.
 - C. the heavy fur on their bodies.
 - D. continuous migration.
37. There are no trees in the Tundra due to lack of
- A. space.
 - B. sunlight.
 - C. water.
 - D. permafrost.
38. According to the passage, polar regions are cold because of
- A. global warming.
 - B. cold and dry winds.
 - C. heavy snowfall.
 - D. lack of sun rays.
39. Which of the following is CORRECT?
- A. The Tundra is situated around the North Pole.
 - B. The polar regions are slightly tilted towards North.
 - C. Reindeer moss is a common animal in polar regions.
 - D. The animals have waxy and leathery skin.
40. Which of the following is MISMATCHED about wildlife in the Tundra?
- A. Fiercest animal → polar bear
 - B. Caribou → can be tamed
 - C. Lemmings → feed on animals
 - D. Snowy owl → grows more feathers during winter

Please use this page for rough work

Please use this page for rough work

Please use this page for rough work