

**Actualtests.com**

The Power of Knowing



Exam : 156-816

Title : Check Point Certified Managed Security Expert  
Plus VSX NGX

Ver : 11-25-08

**QUESTION 1**

VSX clusters are defined at two levels:

- A. VSX cluster and physical device
- B. VSX cluster and virtual device
- C. VSX Gateway and physical device
- D. VSX cluster and VSX Gateway
- E. VSX Gateway and Virtual device

Answer: E

---

**QUESTION 2**

What is the term used to describe a port or interface that shares traffic from more than one VLAN?

- A. VLAN riding
- B. VLAN trunking
- C. Frame-Strata enabled
- D. Comprehensive Layer-2 label support
- E. Comprehensive VLAN Tag support

Answer: B

---

**QUESTION 3**

TRUE or FALSE. A Virtual System in Bridge Mode can enforce anti-spoofing definitions.

- A. False, anti-spoofing can't be configured for Virtual systems in Bridge Mode
- B. True, as long as the Virtual System has more than two interfaces defined
- C. True, anti-spoofing must be manually defined in bridge mode
- D. True, as long as Network Address Translation is performed
- E. True, anti-spoofing measures are defined automatically in Bridge mode

Answer: C

---

**QUESTION 4**

The \_\_\_\_\_ interface is configured in a VLAN environment, to allow multiple Virtual systems to share a single physical interface on a VSX Gateway.

- A. Synchronization
- B. Warp
- C. Symbolic
- D. Virtual
- E. Physical

Answer: D

---

**QUESTION 5**

At installation, the \_\_\_\_\_ is bound to all configured physical interfaces of a VSX Gateway, UNLESS the interfaces are specifically assigned to another component.

- A. VSX Management Server
- B. Synchronization Network
- C. Internal Virtual Router
- D. External Virtual Router
- E. Management Virtual System

Answer: E

---

**QUESTION 6**

The provisioning and network configuration channel does NOT:

- A. Create Virtual Systems and Virtual Routers on a Gateway
- B. Install Administrator defined Security Policies
- C. Install a default Security Policy blocking all traffic
- D. Create a SCI Certificate for new objects and transfer the Certificate to an object on the VSX Gateway
- E. Configure interface and routing information on the Gateway

Answer: B

---

**QUESTION 7**

Which of the following is a type of VLAN membership?

- A. Port-based
- B. Time-based
- C. Session-based
- D. Protocol-based
- E. Application-based

Answer: D

---

**QUESTION 8**

Which of the following is NOT a type of physical interface seen in a VSX Gateway?

- A. Dedicated management
- B. Synchronization
- C. External
- D. Internal
- E. Warp

Answer: E

---

**QUESTION 9**

A Virtual System in Bridge Mode is a Virtual System that implements:

- A. Dynamic IP Routing
- B. Network Address Translation
- C. IP Routing
- D. Native Layer-2 Communications
- E. VLAN Tagging

Answer: D

---

**QUESTION 10**

Which of the following virtual devices will NOT fail over, if its interface fails in a VSX High Availability configuration?

- A. Management Virtual System Interfaces
- B. External Virtual Router
- C. Virtual Switch
- D. Virtual System with VLAN Interfaces
- E. Virtual System with dedicated interfaces

Answer: C

---

**QUESTION 11**

The \_\_\_\_\_ interface is configured in a VLAN environment, to allow multiple Virtual Systems to share a single physical interface on a VSX Gateway.

- A. Synchronization
- B. Symbolic
- C. Warp
- D. Physical
- E. Virtual

Answer: E

---

**QUESTION 12**

You are configuring source-based routing in a VSX Gateway deployment with both External and Internal Virtual Routers. Which of the following functions can't be configured for the Virtual Systems?

- A. Remote Access VPNs
- B. Anti-spoofing measures
- C. Intranet VPNs

- D. Network Address Translation
- E. Virtual System clustering

Answer: B

---

**QUESTION 13**

How many Management Virtual System instances does each member of a VSX Gateway cluster run?

- A. Only one
- B. Two, the cluster MVS and the unique Gateway MVS
- C. One for each Virtual System configured on the Gateway
- D. One for each physical interface on the Gateway
- E. One for each cluster member

Answer: A

---

**QUESTION 14**

Which of the following elements is NOT maintained separately by each Virtual System on a VSX Gateway?

- A. Management database
- B. Security Policies
- C. Configuration parameters
- D. Logging parameters
- E. State tables

Answer: A

---

**QUESTION 15**

A Virtual System in Bridge Mode is a Virtual System that implements:

- A. Native Layer-2 Communications
- B. Dynamic IP Routing
- C. Network Address Translation
- D. VLAN Tagging
- E. IP Routing

Answer: A

---

**QUESTION 16**

When Virtual systems are deployed in Bridge mode, they use \_\_\_\_\_ to detect failures and forward traffic to another Virtual System in a cluster?

- A. VRRP
- B. STP

- C. MPLS
- D. PBDU
- E. OSPF

Answer: B

---

**QUESTION 17**

Which of the following is NOT a virtual device that can be defined on a VSX Gateway?

- A. Virtual Router
- B. Warp Interface
- C. Virtual System
- D. Virtual Switch
- E. Physical Interface

Answer: E

---

**QUESTION 18**

The \_\_\_\_\_ interface is configured in a VLAN environment, to allow multiple Virtual Systems to share a single physical interface on a VSX Gateway.

- A. Physical
- B. Symbolic
- C. Warp
- D. Virtual
- E. Synchronization

Answer: D

---

**QUESTION 19**

Which interface of the Management Virtual System (MVS) can be compared to the External interface of a traditional Security Gateway?

- A. Dedicated management interface, typically eth0
- B. Virtual interface leading from the MVS to the External Virtual Router
- C. Warp interface leading from the MVS to the External Virtual Router
- D. Synchronization interface
- E. None; the External Virtual Router acts as the External interface to all Virtual Systems configured on the VSX Gateway

Answer: C

---

**QUESTION 20**

Which of the following MDS types allows you to create and manage a VSX Gateway?

- A. MDS Manager station

- B. MDS CLM
- C. MDS VSX Integrator
- D. MDS Manager + Container station
- E. MDS MLM

Answer: D

---

**QUESTION 21**

Which of the following virtual devices can be defined without a dedicated physical interface?

- A. External Virtual Router
- B. Virtual System
- C. Virtual Switch
- D. Internal Virtual Router
- E. Virtual System in Bridge Mode

Answer: C

---

**QUESTION 22**

Consider the following scenario: A hub connects four hosts a VLAN-Tagged port on a switch. The hosts have IP addresses ranging from 10.0.0.1 to 10.0.0.4. The switch adds a VLAN Tag of 400 to all communication passing through it. Once communication from the second host on the hub passes through the switch port on the way to its destination on the external network, how does the traffic appear in SmartView Tracker? Assume that traffic enters the Gateway on interface eth3.

- A. eth3.2.400
- B. eth3.402
- C. eth3.400.2
- D. eth3.2
- E. eth3.400

Answer: E

---

**QUESTION 23**

The VSX Management Server uses which of the following channels to communicate with components of the VSX Gateway?

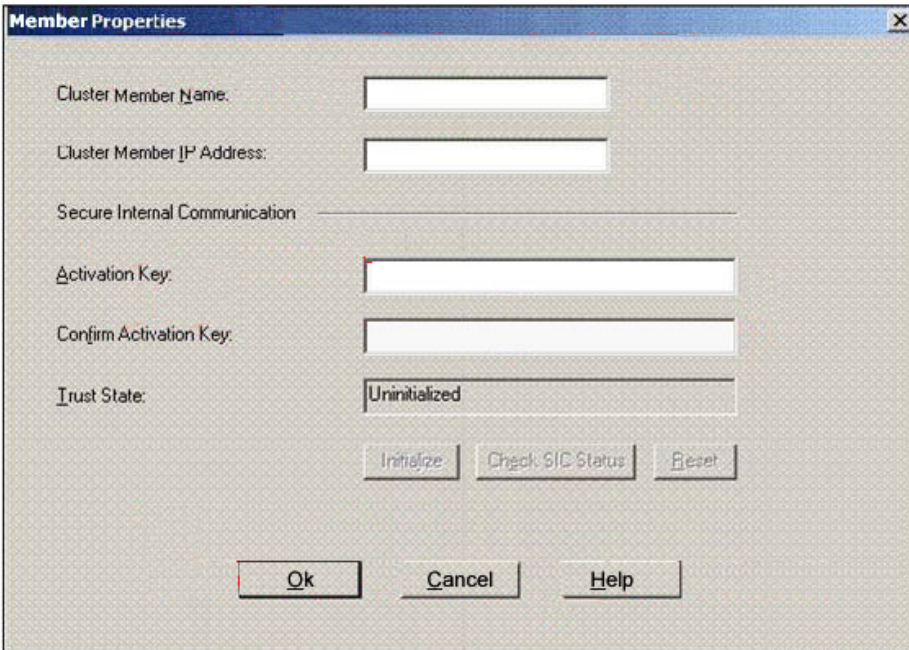
- A. Security Management
- B. Forwarding Configuration
- C. Context Identification
- D. Gateway Management Configuration
- E. VSX Inspection Verification

Answer: A

---

**QUESTION 24**

Exhibit:



During the initial configuration of a VSX Gateway cluster, the VSX Administrator is prompted to specify each cluster member's name, as shown below: Which of the following best describes this name?

- A. Hostname of the individual VSX Gateway in the cluster
- B. Customer for which this VSX Gateway in the cluster
- C. Any name the VSX Administrator chooses to describe the cluster member
- D. IP Address of the individual VSX Gateway in the Cluster

Answer: C

---

**QUESTION 25**

When configuring VSX Gateway Clustering the VSX Administrator assigns a unique \_\_\_\_\_ to each VSX Gateway in the cluster.

- A. Subnet Mask
- B. Name
- C. Initial State (Active/Standby)
- D. Management server
- E. Synchronization interval

Answer: B

---

**QUESTION 26**

Which of the following is a Multi-Context process?



- A. cpd
- B. psd
- C. vsxd
- D. gwd
- E. synd

Answer: A

---

**QUESTION 27**

The External Virtual Router is associated with a dedicated interface. It is considered to be which type of interface?

- A. Virtual
- B. Symbolic
- C. Synchronization
- D. Warp
- E. Physical

Answer: E

---

**QUESTION 28**

Communication within a VLAN takes place at which layer of the OSI Model IP stack?

- A. Physical Layer
- B. Transport Layer
- C. Network Layer
- D. Data-link Layer
- E. Session Layer

Answer: D

---

**QUESTION 29**

A VSX cluster configuration is built from which three components?

- A. Management Network, Internal Communications Network, Virtual IP Addresses
- B. Management Network, Internal Virtual Network, Virtual IP Addresses
- C. Synchronization Network, Internal Communications Network, Virtual IP Addresses
- D. Synchronization Network, Internal Network, External Network
- E. Synchronization Network, Virtual Network, External Network

Answer: C

---

**QUESTION 30**

When configuring \_\_\_\_\_, the interface leading to the External Virtual Router should be set as the main IP Address and should be publicly routable.

- A. Anti-spoofing
- B. Network Address Translation
- C. A Virtual Switch
- D. VLAN Trunking Interfaces
- E. Virtual Systems in Bridge mode

Answer: B

---

**QUESTION 31**

In a VLAN Tag added to a frame header, the \_\_\_\_\_ is a 2 byte number that identifies a frame as tagged.

- A. User\_priority
- B. Canonical Format Indicator
- C. VLAN identifier
- D. Tag Protocol Identifier
- E. Tag Control information

Answer: D

---

**QUESTION 32**

When deploying a VSX Gateway managed by SmartCenter Server, how many Certificate Authorities will the deployment have?

- A. One, shared by all components
- B. Two; one for the SmartCenter Server and one shared by all Virtual Systems and Virtual Routers
- C. Three; one for the SmartCenter Server, one shared by all Virtual Systems and one shared by the Virtual Routers
- D. One for each Virtual System and Virtual Router and Configured on the VSX Gateway
- E. One for each Virtual System configured on the VSX Gateway

Answer: A

---

**QUESTION 33**

Consider the following scenario: Your Network configuration requires that you configure a single interfaces on the VSX Gateway to lead to multiple networks. A different Virtual System must protect each network sending traffic through the VSX Gateway. You configured a dedicated management interface on the VSX Gateway, along with 1 External Virtual Router and 4 Virtual Systems one for each Customer. Which of the following hardware devices must be used to connect the different networks to the single shared interface?

- A. Frame cache-redirection enabled switch
- B. Jumbo Frame-enabled switch

- C. Router
- D. Content-intelligent switch
- E. VLAN-capable switch

Answer: E

---

**QUESTION 34**

A \_\_\_\_\_ is a virtual security device configured on a VSX Gateway, which operates as a complete routing and security domain, with firewall and VPN capabilities.

- A. External Virtual Router
- B. Virtual System Extension
- C. Virtual System
- D. Virtual Switch
- E. Context identification Module

Answer: C

---

**QUESTION 35**

Which of the following objects allows you to configure resource settings, to limit the number of concurrent connections?

- A. External Virtual Router
- B. Virtual Systems
- C. Internal Virtual Router
- D. VSX Gateway
- E. Virtual Switch

Answer: B

---

**QUESTION 36**

Which of the following statements is true concerning the default Security Policy of the External Virtual Router?

- A. The External Virtual Router always enforces the same policy as the Management Virtual System
- B. All traffic coming from networks protected by a VSX Gateway is accepted. All other traffic is dropped
- C. The default policy of the External Virtual Router Denies all traffic going to or coming from it
- D. The default policy of the External Virtual Router can't be changed
- E. The External Virtual Router automatically performs Hide NAT behind external interface for all Virtual Systems connected to it

Answer: C

**QUESTION 37**

Virtual Switches make packet-forwarding decisions based on which of the following?

- A. MAC Address
- B. IP Address
- C. Routing Table
- D. Subnet mask
- E. Traffic Flow Direction

Answer: A

---

**QUESTION 38**

The VLAN Tag increases the frame header by \_\_\_\_\_ bytes?

- A. 0
- B. 16
- C. 2
- D. 8
- E. 4

Answer: E

---

**QUESTION 39**

Which of the following objects allows you to configure resource settings, to limit the number of concurrent connections?

- A. External Virtual Switch
- B. VSX Gateway
- C. Management Virtual System
- D. Internal Virtual Switch
- E. Virtual Router

Answer: C

---

**QUESTION 40**

If you want your customer's virtual systems to give protected hosts access to and from the internet, which of the following must be configured as a Public IP address?

- A. Main IP of the Virtual Switch
- B. Default Gateway IP Address of the Virtual Switch
- C. Main IP of the Customer's Virtual System
- D. Main IP of the Management Virtual System
- E. Default Gateway IP Address of the Management Virtual System

Answer: C

**QUESTION 41**

When configuring a Warp Link, what is the IP address that appears in the topology properties of the External Virtual Router?

- A. Either the IP Address designated as the main IP for the Virtual System to which the link connects; or its Static Network Address Translation IP Address
- B. 255.255.255.255
- C. Same as the IP Address of the External Virtual Router
- D. 0.0.0.0
- E. Always the IP address designated as the main IP, for the Virtual System to which the link connects

Answer: D

---

**QUESTION 42**

If a VSX Gateway is protecting multiple customer networks behind only one shared interface, the VSX Administrator must either configure \_\_\_\_\_ for source-based routing or deploy a VLAN solution.

- A. An Internal Virtual Router
- B. VSX Gateway High Availability
- C. Non-VLAN Interface Trunking
- D. VSX Gateway Load Sharing
- E. Multiple External Virtual Routers

Answer: A

---

**QUESTION 43**

When installing the Security Policy of a Management Virtual System (MVS), what objects are available for Policy installation, other than the MVS?

- A. All configured Virtual Routers
- B. No other object is available for Policy installation
- C. All configured Virtual Systems and the External Virtual Router
- D. All configured Virtual Systems
- E. All configured Virtual Switches

Answer: A

---

**QUESTION 44**

Which of the following is the only interface configured by running sysconfig, during the installation of a VSX Gateway in a single Gateway environment?

- A. Synchronization interface
- B. Dedicated Customer interface

- C. External Interface
- D. Management Interface
- E. Internal Virtual Route Interface

Answer: D

---

**QUESTION 45**

Which of the following is the only interface configured by running sysconfig, during the installation of a VSX Gateway in a single Gateway environment?

- A. Dedicated Customer interface
- B. Synchronization interface
- C. Internal Virtual Router Interface
- D. External Interface
- E. Management Interface

Answer: E

---

**QUESTION 46**

When deploying a VSX Gateway managed by a Provider-1 MDS, how many Administrators can connect in Read/Write mode to the MDS database simultaneously?

- A. One for each CMA
- B. Two: One can connect to the Management Virtual System database, while the other connects to the Virtual System database
- C. One
- D. No more than 25
- E. No more than 250

Answer: A

---

**QUESTION 47**

You are configuring source-based routing in a VSX Gateway deployment with both External and Internal Virtual Routers. Which of the following functions can't be configured for the Virtual Systems?

- A. Network Address Translation
- B. Virtual System clustering
- C. Anti-spoofing measures
- D. Remote Access VPNs
- E. Intranet VPNs

Answer: C

---

**QUESTION 48**

Which of the following interface are configured by running sysconfig, during installation

of a VSX Gateway in a High Availability environment?

- A. Any Configured VLAN
- B. External Interface
- C. Synchronization interface
- D. Management Interface
- E. Dedicated Customer interface

Answer: D

---

**QUESTION 49**

When configuring a Provider-1 management solution for your VSX Gateway, what is the fewest number of CMAs that must be licensed, for VSX management functionality?

- A. 50
- B. 25
- C. 5
- D. 10
- E. 1

Answer: D

---

**QUESTION 50**

You need to provide a security layer for an existing core network. You need an inspection module that operates at layer 2, is completely transparent and does not impact the existing IP structure or different control protocols in use. Which of the following virtual device will perform the kind of inspection you need?

- A. External Virtual Router
- B. Internal Virtual Router
- C. Virtual System in Bridge Mode
- D. Virtual Switch
- E. Virtual System

Answer: C

---

**QUESTION 51**

A Warp Link is a virtual point-to-point connection between a:

- A. Virtual Router and a physical interface
- B. Virtual System and another Virtual System
- C. Virtual System and the management interface
- D. Virtual Router and Virtual Switch
- E. Virtual Router and Virtual System

Answer: E

**QUESTION 52**

Which of the following VSX Gateway components are unique to and NOT shared by each Virtual System?

- A. Virtual Router
- B. Context Identification Module
- C. VSX Management Server
- D. VSX Policy Editor
- E. VSX Inspection Module

Answer: E

---

**QUESTION 53**

Which of the following is NOT maintained separately by each Virtual System on a VSX Gateway?

- A. State tables
- B. Security Policies
- C. Configuration parameters
- D. Management database
- E. Logging Parameters

Answer: D

---

**QUESTION 54**

The \_\_\_\_\_ is a single-bit flag that indicates that the format of MAC address information is presented in a standard form.

- A. Tag Control Information
- B. User\_Priority
- C. VLAN Identifier
- D. Tag Protocol Identifier
- E. Canonical Format Indicator

Answer: E

---

**QUESTION 55**

In a VSX Gateway cluster, which of the following objects are available by default as installation targets for the Management Virtual System?

- A. Virtual System cluster of each customer
- B. External Virtual Switch cluster object
- C. Individual Virtual Systems for each Customer's cluster member
- D. Internal Virtual Switch cluster object
- E. External Virtual Router cluster object



Answer: E

---

**QUESTION 56**

Which of the following is a type of VLAN membership?

- A. Protocol-based
- B. Session-based
- C. Port-based
- D. Time-based
- E. Application-based

Answer: A

---

**QUESTION 57**

When configuring Virtual Systems with overlapping IP Addressing, the Virtual Systems must:

- A. Be include in a VPN
- B. Define VLAN tags
- C. Be on the same network
- D. Perform Network Address Translation
- E. Perform in Bridge Mode

Answer: D

---

**QUESTION 58**

When configuration a new Virtual System for your VSX Gateway configuration, what should you do first?

- A. Open the Admin CMA SmartDashboard and create a new Virtual System Object
- B. Open the Admin CMA SmartDashboard and create a new CMA object to be used as the Virtual System's Management Server
- C. Add a new Virtual System to the Main Customer, so that the Admin CMA can be used as the Management Server
- D. Open the Global SmartDashboard and create a new Virtual System Object
- E. Create a new customer and CMA, to be used as the Virtual System's Management Server

Answer: E

---

**QUESTION 59**

In a Standard VSX configuration, each Virtual System is configured with which of the following interfaces?

- A. One leading to the Management Virtual System; and one leading to the External

Virtual Router

- B. One for the physical interface leading to the protected network and one leading to the management virtual system
- C. One leading to the External Virtual Router/Switch and one for the physical interface leading to the protected network
- D. One leading to the Management Virtual System and one leading to the Internal Virtual Router/Switch
- E. One leading to a router on the External network, and one for the physical interface leading to the protected network

Answer: C

---

**QUESTION 60**

Which of the following VSX components maintain Layer 3 Connectivity?

- A. External Virtual Switch
- B. Virtual System in Bridge Mode
- C. VLAN Interface
- D. Internal Virtual Switch
- E. Virtual Router

Answer: E

---

**QUESTION 61**

What is the term used to describe a port or interface that shares traffic from more than one VLAN?

- A. Comprehensive VLAN tag support
- B. VLAN riding
- C. Frame-Strata enabled
- D. Comprehensive Layer-2 label support
- E. VLAN trunking

Answer: E

---

**QUESTION 62**

Bridged Virtual Systems in a cluster monitor which of the following protocols, to fail over a bridged system?

- A. OSPF
- B. MPLS
- C. BPDU
- D. STP
- E. VTP

Answer: C

**QUESTION 63**

When configuring a new Virtual System for your VSX Gateway configuration, what should you do first?

- A. Open the Admin CMA SmartDashboard and create a new Virtual System object
- B. Open the Global SmartDashboard and create a new Virtual System object
- C. Open the Admin CMA SmartDashboard and create a new CMA object to be used as the Virtual System's Management Server
- D. Create a new Customer and CMA, to be used as the Virtual System's Management Server
- E. Add a new Virtual System to the Main Customer, so that the Admin CMA can be used as the Management Sever

Answer: D

---

**QUESTION 64**

When deploying a VSX Gateway managed by a SmartCenter Server, which of the following statements is TRUE?

- A. VSX Administrators can configure different domains for each Virtual System
- B. Multiple Administrators can simultaneously connect to the same databases to manage multiple customers
- C. VSX Superuser Administrators can configure granular permissions for each Customer Administrator
- D. All Customer objects, rules and users are shred in a single database
- E. Each Virtual System has its own unique Certificate Authority

Answer: D

---

**QUESTION 65**

Which of the following commands should you run to stop a VSX Gateway Cluster?

- A. cphastop
- B. cpstop
- C. vsxstop
- D. vsxhastop
- E. vsx cpstop

Answer: B

---

**QUESTION 66**

Which of the following VSX Gateway configuration is valid?

- A. A shared NIC assigned to different Virtual Systems, with the same IP addresses on the same VLAN

- B. A shared NIC assigned to different Virtual Systems, with the same IP address on different VLANs
- C. Multiple NICs assigned to different Virtual Systems in Bridge Mode, performing Hide NAT
- D. Multiple NICs assigned the same IP addresses, for each Virtual System in the configuration but with different VLAN tags
- E. A shared NIC assigned to different Virtual Systems, with different IP addresses on the same VLAN

Answer: B

---

**QUESTION 67**

A Virtual Router performs which of the following tasks?

- A. Network Address Translation for protected customer networks
- B. Security Policy application for protected customer networks
- C. Packet inspection for protected customer networks
- D. Inter-Virtual System routing
- E. Synchronization between VSX Gateways in a cluster

Answer: D

---

**QUESTION 68**

Which of the following virtual device will NOT fail over, if its interface fails in a VSX High Availability configuration?

- A. Virtual System in Bridge Mode
- B. Management Virtual System Interface
- C. External Virtual Router
- D. Internal Virtual Router
- E. Virtual System with VLAN interfaces

Answer: A

---

**QUESTION 69**

What is required to prevent loops in Virtual Systems in a Cluster XL environment?

- A. MPLS
- B. VRRP
- C. BPDU
- D. STP
- E. OSPF

Answer: D

---

**QUESTION 70**

Security Policies enforced by Virtual Systems are applied to \_\_\_\_\_ connected to the Virtual IP Stack.

- A. Warp Interfaces
- B. Warp and Virtual Interfaces
- C. All Interfaces
- D. Virtual Interfaces
- E. Physical Interfaces

Answer: C

---

**QUESTION 71**

The External Virtual Router is associated with a dedicated interface. It is considered to be which type of interface?

- A. Physical
- B. Virtual
- C. Symbolic
- D. Synchronization
- E. Warp

Answer: A

---

**QUESTION 72**

Which of the following MDS types allows you to create and manage a VSX Gateway?

- A. MDS Manager station
- B. MDS SmartCenter for VSX
- C. MDS Container station
- D. MDS VSX Integrator
- E. MDS MLM

Answer: C

---

**QUESTION 73**

Which of the following can function as a Management Server for a VSX Gateway?

- A. Security Management Portal
- B. Check Point Integrity
- C. Provider-1 NGX; Multi-Log Monitor
- D. VPN-1/Firewall-1 Small Office
- E. SmartCenter Server

Answer: B,E

Explanation:

36. Which process uses an encrypted TCP connection to perform Full Synchronization of VSX Gateways in a cluster?

- A. cpd
- B. srd
- C. fwd
- D. synd
- E. vpnd

---

**QUESTION 74**

When configuring Virtual Switch leading to the internet, which of the following items is required when creating a virtual switch object?

- A. Dedicated interface
- B. Subnet mask
- C. Default Gateway
- D. VLAN tag
- E. IP Address

Answer: A

---

**QUESTION 75**

What is the netmask for each configured Warp Link?

- A. 255.255.255.0
- B. 0.0.0.0
- C. 255.255.0.0
- D. Same as the netmask of the default route of the External Virtual Router
- E. 255.255.255.255

Answer: E

---

**QUESTION 76**

Bridged Virtual Systems in a cluster monitor which of the following protocols, to fail over a bridged system?

- A. PBDU
- B. OSPF
- C. STP
- D. VTP
- E. MPLS

Answer: A

**QUESTION 77**

Which of the following VLAN membership types is considered explicit in its propagation?

- A. MAC address-based
- B. Application-based
- C. Session-based
- D. Protocol-based

Answer: D

---

**QUESTION 78**

Which of the following objects allows you to configure resource settings, to limit the number of concurrent connections?

- A. Internal Virtual Router
- B. Virtual Switch
- C. Virtual Systems
- D. External Virtual Router
- E. VSX Gateway

Answer: C

---

**QUESTION 79**

Which of the following VSX components maintain Layer-3 connectivity?

- A. Virtual System in Bridge Mode
- B. VLAN interface
- C. Internal Virtual Switch
- D. External Virtual Switch
- E. Virtual Router

Answer: E