

Question No. 1(e)

ADVANCED LEVEL TECHNOLOGY AND DESIGN
Assessment Unit A2 1
2010

Centre Number

71

Candidate Number

--

**Pro forma answer page
(answer number 1(e))**

Question No. 2(c)(ii)

ADVANCED LEVEL TECHNOLOGY AND DESIGN
Assessment Unit A2 1
2010

Centre Number

71

Candidate Number

--

**Pro forma answer page
(answer number 2(c)(ii))**

71

--

Displacement



Angular Rotation/Degrees

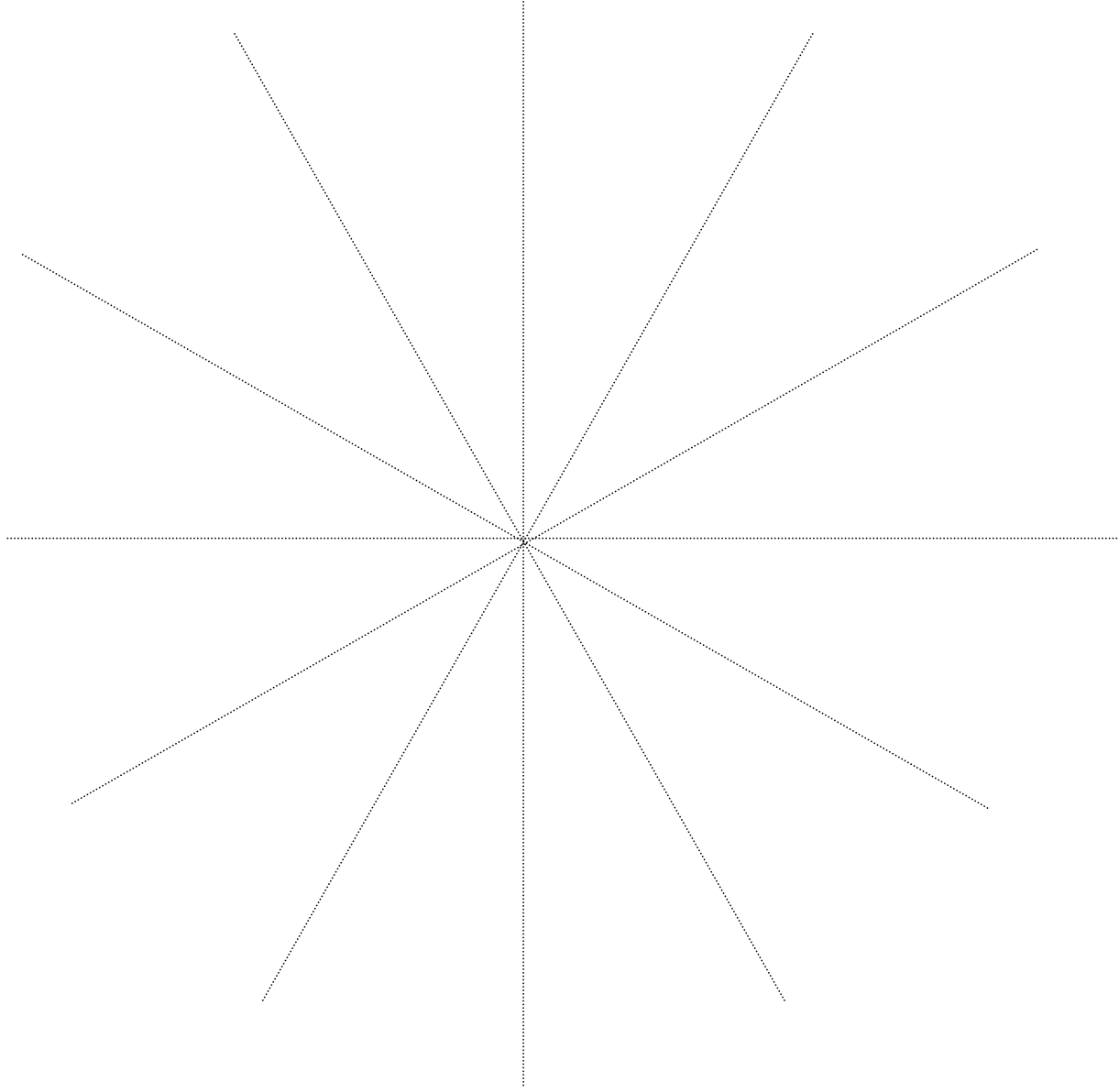
**Pro forma answer page
(answer number 3(a)(iii))**

Centre Number

71

Candidate Number

--



**Pro forma answer page
(answer number 3(b))**

Question No. 3(e)

ADVANCED LEVEL TECHNOLOGY AND DESIGN
Assessment Unit A2 1
2010

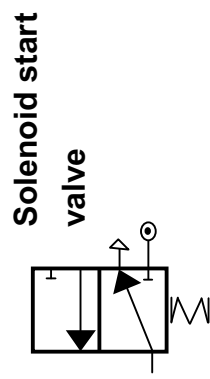
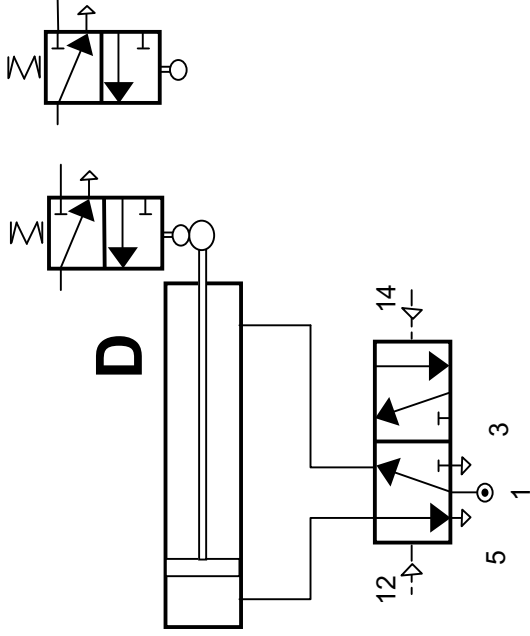
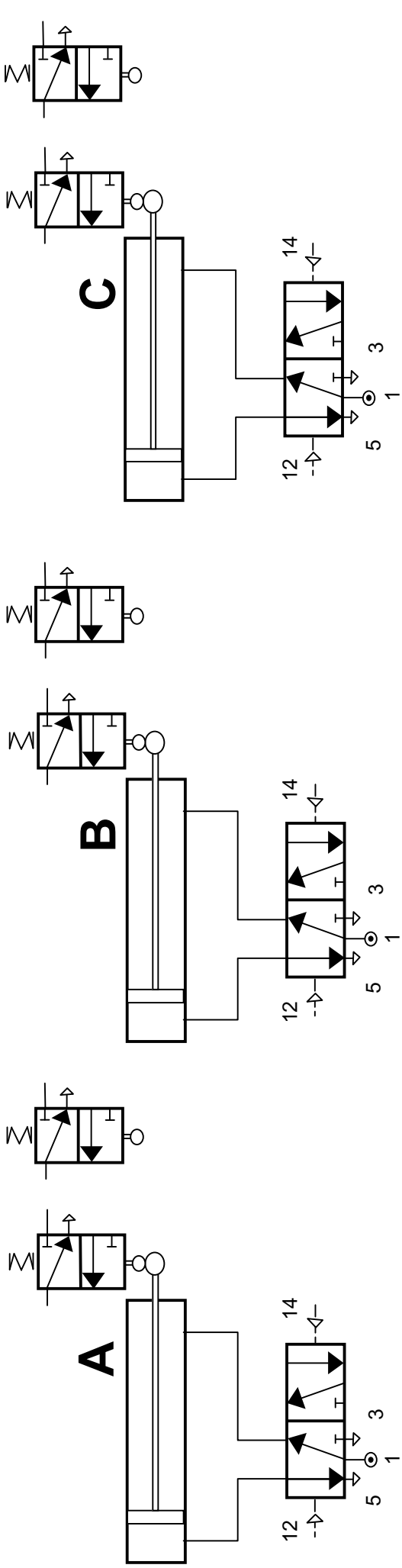
Centre Number

71

Candidate Number

--

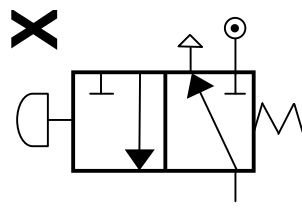
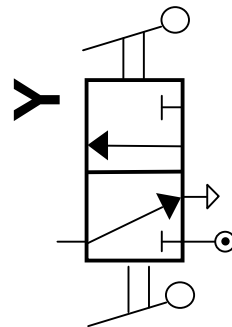
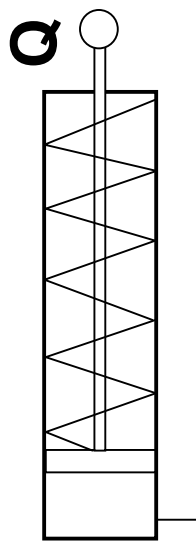
**Pro forma answer page
(answer number 3(e))**



Pro forma answer page
(answer number 4(b))

71

--



**Pro forma answer page
(answer number 4(c))**

Question No. 4(d)

ADVANCED LEVEL TECHNOLOGY AND DESIGN
Assessment Unit A2 1
2010

Centre Number

71

Candidate Number

--

**Pro forma answer page
(answer number 4(d))**