

**Advanced Subsidiary GCE
SPANISH**

F721

Unit F721: Spanish Speaking 1

Examiner's Booklet

Time: 15 minutes



EXAMINER'S BOOKLET

These materials are confidential and must be kept under secure conditions until a maximum of three working days before the Centre's set date of the examination.

This document consists of 14 printed pages and 2 blank pages.

RANDOMISATION SHEET

Candidates must be given the Role Play cards in the following sequence. Centres with more than 20 candidates should repeat the sequence.

Candidate	Card
1	A
2	A
3	B
4	B
5	C
6	C
7	C
8	B
9	B
10	A
11	C
12	A
13	A
14	C
15	B
16	B
17	C
18	A
19	A
20	B

Advanced Subsidiary GCE

F721

SPANISH

Unit F721: Spanish Speaking 1

Role Play A

Time: 15 minutes

Additional Materials: None



This Candidate's Sheet is to be handed to the candidate 20 minutes in advance.

INSTRUCTIONS TO CANDIDATES

You should use the time available to study the instructions overleaf. You may make notes on this sheet, which you should take into the examination room with you.

When the test begins you will be asked:

- (i) to carry out the task described overleaf
 - (ii) to discuss with the examiner a topic or text which you have prepared during the course.
- The topic should relate to Spain or a Spanish-speaking country.

You may not use a dictionary.

This document consists of 4 printed pages.

ROLE PLAY A: CANDIDATE'S SHEET

Note to the candidate: You should begin by asking the two questions. The task can then be completed in the order you prefer. You should base your replies on the English text, but sometimes you will need to use your imagination and initiative to react to the examiner's questions and comments.

Situación

Hablas con un español / una española que ahora vive cerca de ti en Gran Bretaña. Esta persona no tiene mucho tiempo para ir de compras; tampoco tiene coche, así que no le gusta salir por la noche o si hace mal tiempo.

Tarea

Tienes un folleto sobre Ocado, un servicio que entrega a domicilio los productos de alimento. Tienes que explicarle al vecino español / a la vecina española lo que ofrece esa compañía, y por qué sería beneficioso usar el servicio que ofrece.

Primero debes preguntar sobre:

- 1 las dificultades de ir a las tiendas**
- 2 la posibilidad de usar un ordenador**

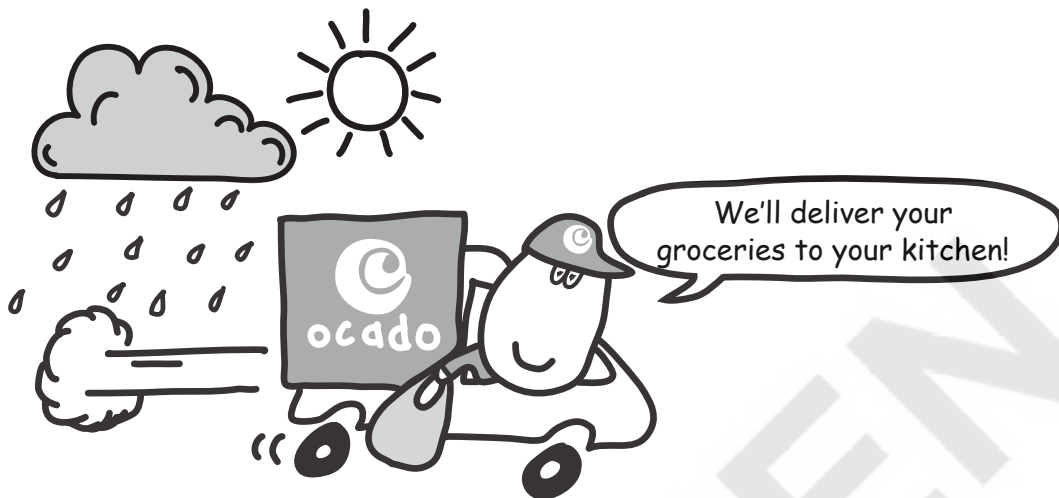
Tienes que explicarle al español / a la española:

- lo que ofrece la compañía Ocado
- por qué es ideal para él / ella
- los aspectos positivos de este servicio
- cómo se puede contactar con la compañía

También se hablará de:

- si los grandes supermercados son beneficiosos o no
- los aspectos positivos y negativos de comprar por Internet

Come rain or shine



**We're Ocado, 'Best online supermarket of the year',
in partnership with Waitrose stores.**

Now winter's here, what better time to give us a try?

It takes more than a nippy breeze, a drop of rain or a few leaves to stop us from delivering the groceries you order, when you want them!

A few reasons why our Customers shop with us:



Fragile items are carefully packed.



Frozen groceries arrive frozen.



Deliveries are in handy one-hour slots.



The groceries are as fresh as can be.



And if a Customer asks for a banana they get a banana, not a banana milkshake!

We'll even give you £15 off your first order over £75.

Just visit the website www.ocado.com or ring us on 0845 399 1122 and our Team will talk you through your first online order.

ROLE PLAY A: EXAMINER'S SHEET

Note to examiner: Below is a guide to the conduct of your part of the role-play exercise. You should start the task as indicated, but the way in which the task develops will, of course, vary from candidate to candidate. You should not feel constrained to follow the order shown below if this is not appropriate. The items printed in bold which relate to the completion of the task must be explored for each candidate. Where there are other suggestions in brackets these may help to develop the main points.

Situation

As on the candidate's sheet. You are a Spaniard recently moved to the UK. You are talking to your new neighbour about buying groceries on line. It is the candidate's task to explain to you in Spanish the possibilities.

The Task

You begin the task as follows:

Estamos hablando de pedir productos por Internet. Necesito tu ayuda porque no conozco bien este país. Pero, primero creo que tienes unas preguntas que quieres hacerme, ¿no?

In response to the candidate's questions:

- 1 You work long hours and don't have a car.
- 2 You have a computer and don't mind using it.

During the discussion you comment and ask questions to find out the following information:

- **Does the company have a good reputation?** (What does Ocado do?)
- **I really don't like going out in the winter or at night.** (Why is it a good time to try Ocado?)
- **Isn't it true that online companies are not very good?**
- **How can you contact the company?** (What help do they give?)

During the conversation you also discuss:

- **Are large supermarkets a good thing?**
- **What are the positive and negative aspects of buying on line?**

**Advanced Subsidiary GCE
SPANISH**

F721

Unit F721: Spanish Speaking 1

Role Play B

Time: 15 minutes

Additional Materials: None



This Candidate's Sheet is to be handed to the candidate 20 minutes in advance.

INSTRUCTIONS TO CANDIDATES

You should use the time available to study the instructions overleaf. You may make notes on this sheet, which you should take into the examination room with you.

When the test begins you will be asked:

- (i) to carry out the task described overleaf
- (ii) to discuss with the examiner a topic or text which you have prepared during the course. The topic should relate to Spain or a Spanish-speaking country.

You may not use a dictionary.

This document consists of 4 printed pages.

ROLE PLAY B: CANDIDATE'S SHEET

Note to the candidate: You should begin by asking the two questions. The task can then be completed in the order you prefer. You should base your replies on the English text, but sometimes you will need to use your imagination and initiative to react to the examiner's comments and questions.

Situación

Trabajas en una oficina de turismo en Gran Bretaña. Una familia española te pide consejos.

Tarea

El cliente / la clienta española quiere visitar una parte del país que ofrezca muchas posibilidades. Tienes el folleto, **England's North West** y tienes que explicarle al cliente / a la clienta lo que ofrece esta region.

Primero debes preguntar sobre:

- 1 los planes de la familia**
- 2 las preferencias de los distintos miembros de la familia**

Sugieres que visite el noroeste de Inglaterra.

Tienes que explicarle a tu cliente:

- lo que ofrece la región a gente con intereses diferentes
- algunos de los aspectos culturales de las ciudades
- lo que puede hacer una persona activa
- cómo se puede obtener una idea más clara de la región

Durante la conversación también se hablará de:

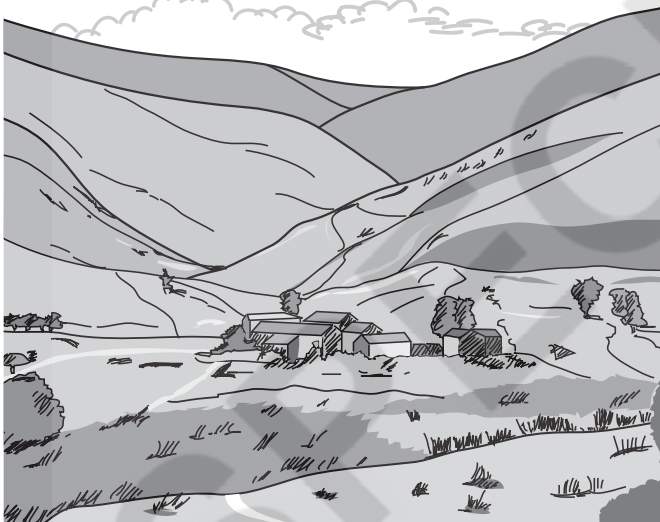
- si las vacaciones en general son para descansar o aprender
- los aspectos positivos y negativos de viajar

ENGLAND'S NORTH WEST

*Scenery, history, fishing, bird-watching, opera, sport, architecture
– there's something for everyone.*

Liverpool, on the River Mersey, has a cultural scene rivalled by few other places. It is the home of the most famous pop band in history, one of the world's best-known football teams and a range of attractions that make a visit a must.

But that's only part of our rich and exciting region.



Cumbria and the majestic Lake District offer the chance to rest and relax in some of the UK's most beautiful countryside.

Manchester's galleries and museums, a range of theatres, clubs, bars and other attractions occupy your time – day and night.

Lancashire is home to the City of Lancaster, the rugged Pennine hills and the seaside resorts of Blackpool and Morecambe. Cheshire, with its hills and plains, boasts the historic Roman City of Chester.

Explore the region more fully online at
www.englishnorthwest.com

ROLE PLAY B: EXAMINER'S SHEET

Note to examiner: Below is a guide to the conduct of your part of the role-play exercise. You should start the task as indicated, but the way in which the task develops will, of course, vary from candidate to candidate. You should not feel constrained to follow the order shown below if this is not appropriate. The items printed in bold which relate to the completion of the task must be explored for each candidate. Where there are other suggestions in brackets these may help to develop the main points.

Situation

As on the candidate's sheet. You are a Spanish tourist in the UK. You are seeking information in a tourist office about a possible tour.

The Task

You begin the task as follows:

“Soy un turista español / una turista española en Inglaterra. Estamos en una oficina de turismo y necesito tu ayuda porque no conozco bien este país. Pero, primero creo que tienes unas preguntas que quieres hacerme, ¿no?”

In response to the candidate's questions you answer:

- 1 You want to visit somewhere interesting and varied.
- 2 Most of you like cultural pursuits but the children are also fond of sporting and outdoor activities.

During the discussion you comment and ask questions to find out the following information:

- **what different things are on offer in the area**
(Where are these things offered?)
- **what the cultural aspects of the area are**
(Where are they to be found?)
- **how you can do something more active**
(Where can you do it?)
- **how you can get a better idea of what the area offers**

During the conversation you will also discuss

- **what is the point of holidays?**
- **what the positive and negative aspects of travel are**

**Advanced Subsidiary GCE
SPANISH**

F721

Unit F721: Spanish Speaking 1

Role Play C

Time: 15 minutes

Additional Materials: None



This Candidate's Sheet is to be handed to the candidate 20 minutes in advance.

INSTRUCTIONS TO CANDIDATES

You should use the time available to study the instructions overleaf. You may make notes on this sheet, which you should take into the examination room with you.

When the test begins you will be asked:

- (i) to carry out the task described overleaf
 - (ii) to discuss with the examiner a topic or text which you have prepared during the course.
- The topic should relate to Spain or a Spanish-speaking country.

You may not use a dictionary.

This document consists of 4 printed pages and 2 blank pages.

ROLE PLAY C: CANDIDATE'S SHEET

Note to the candidate: You should begin by asking the two questions. The task can then be completed in the order you prefer. You should base your replies on the English text, but sometimes you will need to use your imagination and initiative to react to the examiner's comments and questions.

Situación

Hablas con tu amigo español / amiga española sobre ordenadores.

Tarea

Tu amigo/amiga quiere comprarse un ordenador sin gastar demasiado dinero y te pide consejo. Tienes un folleto de la compañía Dell y tienes que explicarle al amigo / a la amiga lo que ofrece esta compañía.

Primero debes preguntar sobre:

- 1 la experiencia que tiene el amigo / la amiga de los ordenadores**
- 2 el motivo de comprarse el ordenador**

Sugieres que compre un ordenador Dell.
Tienes que explicar:

- lo que es Dell
- las ventajas que ofrece esta compañía
- cómo se compra el ordenador
- cómo se puede contactar con la compañía

Durante la conversación también se hablará de:

- si vale la pena tener un ordenador
- los aspectos positivos y negativos de Internet

Buy Direct from **Dell™** over the phone or online

– *you get more computer for less money.*

£ **Big Savings**

We build the computer specially for you, so you pay only for what you want.

○ **Professional Advice**

Our experts will make sure you get the right solution for all your computing needs.

☰ **Convenience**

We deliver your Dell™ computer direct to your door, hassle-free. We can even install your computer for you.

📄 **Shop online**

Click www.dell.co.uk or call **0870 152 4682** for sales and advice.



From PCs and services to programs and accessories. We update the website frequently to give you great new offers every day. Many promotions are only available online:

- Always the latest offers
- Open 24 x 7
- Additional discounts
- Easy to order
- We are never further away than the nearest computer

Deal Direct – spend your savings on something else.

ROLE PLAY C: EXAMINER'S SHEET

Note to examiner: Below is a guide to the conduct of your part of the role-play exercise. You should start the task as indicated, but the way in which the task develops will, of course, vary from candidate to candidate. You should not feel constrained to follow the order shown below if this is not appropriate. The items printed in bold which relate to the completion of the task must be explored for each candidate. Where there are other suggestions in brackets these may help to develop the main points.

Situation

As on the candidate's sheet. You are a Spaniard living in the UK. You are talking to an English friend about buying a computer but don't want to spend too much money.

The Task

You begin the task as follows:

"Soy tu amigo español / amiga española. Necesito tu ayuda porque quiero comprarme un ordenador económico. Pero, primero creo que tienes unas preguntas que quieres hacerme, ¿no?"

In response to the candidate's questions:

- 1 You have been using a computer without difficulty, but it is very old.
- 2 You want the computer for the Internet and writing documents.

During the discussion you comment and ask questions to find out the following information:

- **what Dell is**
- **why you should use this company**
(Are there any special benefits?)
- **how you actually choose and buy the computer**
(Delivery arrangements)
- **how you can get in touch with the company**

During the conversation you will also discuss:

- **whether or not computers are worth having**
- **what the positive and negative aspects of the Internet are**

BLANK PAGE

SPECIMEN

SPECIMEN

The maximum mark for this paper is **60**.

SPECIMEN

Section 1: Role-Play			
Answer			Marks
• Response to Examiner	AO1	Grid B	[10]
• Use of stimulus	AO2	Grid A	[15]
• Quality of Language (Accuracy)	AO3	Grid C.1	[5]
Section 1 Total			[30]
Section 2: Conversation			
Answer			Marks
• Ideas, opinions and relevance	AO1	Grid D	[10]
• Fluency, spontaneity, responsiveness	AO1	Grid E.1	[10]
• Pronunciation and intonation	AO1	Grid G	[5]
• Quality of Language (Accuracy)	AO3	Grid C1	[5]
Section 2 Total			[35]
Paper Total			[60]

Section 1: Role-Play**Grid A : Use of stimulus [15 marks]**

0-2	Little or no attempt to use the stimulus material. Supplies no relevant information or only one or two of the points.
3-5	Some attempt to use the stimulus material. Able to give some basic information. Successfully conveys about a quarter of the points.
6-9	Reasonable attempt to use the stimulus material. Successfully conveys about half of the points.
10-12	Good use of the stimulus material. Successfully conveys about three quarters of the points.
13-15	Full use of the stimulus material. Successfully conveys all or nearly all of the points.

Grid B : Response to Examiner [10 marks]

0-2	Has some difficulty in understanding and is hesitant in responding to many of the Examiner's questions and comments. Shows very little initiative or imagination.
3-4	May be hesitant in responding. Responses to the Examiner are brief and sometimes inadequate. Shows little initiative or imagination.
5-6	Responds satisfactorily to the Examiner. Produces some appropriate replies. Shows some initiative and imagination in developing answers but performance is inconsistent.
7-8	Responds readily, takes the initiative and is able to keep the momentum going. Shows imagination and gives some well developed answers.
9-10	Responds fluently and fully to the Examiner's questions and comments. Shows initiative and imagination throughout. Leads the conversation. A convincing performance.

Grid C.1: Quality of Language (Accuracy) [5 marks]

0-1	Little evidence of grammatical awareness. Persistent serious and elementary errors (endings, verb forms, gender of common nouns). Frequent first language interference.
2	Evidence of gaps in basic grammar. Frequent errors of an elementary kind (endings, verb forms, gender of common nouns, adjectival agreements) but evidence of correct use of simple sentence structures. Vocabulary and structures may be quite strongly influenced by the candidate's first language.
3	Shows evidence of fair understanding of grammatical usage. Generally accurate use of simple sentence structures. Some correct use of complex sentence structures. The performance is likely to be patchy and inconsistent.
4	Language generally accurate. Shows a sound grasp of AS and/or A2 structures, as appropriate. Generally correct use of complex structures. Tenses and agreements good, although there may be some inconsistency and errors in more complex areas.
5	Characterised by a high and consistent level of accuracy in use of complex structures, although there may be some errors.

Section 2: Conversation**Grid D: Ideas, opinions and relevance [10 marks]**

0-2	Very few ideas. Ideas not explained or developed. Very limited ability to convey even quite basic information. Very superficial.
3-4	Shows a limited ability to develop or explain ideas and to express opinions. May have some difficulty communicating factual information. Often irrelevant or repetitive.
5-6	Shows some ability to develop and explain ideas and to express opinions. Able to convey information, not always relevant.
7-8	Able to develop and explain ideas and to express points of view, with some justification. Offers relevant information.
9-10	Well chosen relevant information to develop a range of ideas and to justify points of view.

Grid E.1: Fluency, spontaneity, responsiveness [10 marks]

0-2	Has some difficulty in understanding. Hesitant, with frequent pauses, in responding to many of the examiner's questions and comments. Fluency confined to pre-learnt material.
3-4	May be hesitant in responding. Responses to the examiner are brief and sometimes inadequate. Fluency is often confined to pre-learnt material.
5-6	Responds reasonably promptly to the examiner, though with occasional hesitation. Reasonably fluent and spontaneous at times.
7-8	Able to respond readily and take the initiative, with little hesitation. Most of the time is fluent and spontaneous and can keep the momentum going.
9-10	Responds promptly and fully. Consistently shows initiative. Leads the conversation. A fluent and spontaneous performance throughout.

Grid G: Pronunciation and intonation [5 marks]

0-1	Comprehensible only with difficulty. Many sounds mispronounced. Heavily influenced by candidate's first language.
2	Pronunciation and intonation may be influenced by candidate's first language and problems with more difficult sounds sometimes impede communication.
3	Pronunciation and intonation acceptable, in spite of a number of errors which rarely impede communication. Some problems with some more difficult sounds.
4	Pronunciation and intonation generally accurate, although there may be occasional mispronunciation of more difficult sounds.
5	Sounds authentic nearly all of the time. Only occasional errors of pronunciation and intonation.

Grid C.1: Quality of Language (Accuracy) [5 marks]

0-1	Little evidence of grammatical awareness. Persistent serious and elementary errors (endings, verb forms, gender of common nouns). Frequent first language interference.
2	Evidence of gaps in basic grammar. Frequent errors of an elementary kind (endings, verb forms, gender of common nouns, adjectival agreements) but evidence of correct use of simple sentence structures. Vocabulary and structures may be strongly influenced by the candidate's first language.
3	Shows evidence of fair understanding of grammatical usage. Generally accurate use of simple sentence structures. Some correct use of complex sentence structures. The performance is likely to be patchy and inconsistent.
4	Language generally accurate. Shows a sound grasp of AS and/or A2 structures, as appropriate. Generally correct use of complex structures. Tenses and agreements good, although there may be some inconsistency and errors in more complex areas.
5	Characterised by a high and consistent level of accuracy in use of complex structures, although there may be some errors.

Information to be covered in Role Plays
<p>Role Play A</p> <ul style="list-style-type: none"> • Ocado is online supermarket, in partnership with Waitrose • award-winning 'Best online supermarket' • delivers straight to your door when you want • deliveries unaffected by weather or leaves on the road • fragile items packed carefully and frozen goods arrive frozen • one-hour slots for delivery • freshness of products • customer gets what was ordered, not something else • £15 saving on first order over £75 • team helps you compile your first order • more information on website or phone
<p>Role Play B</p> <ul style="list-style-type: none"> • Scenery, sport, fishing, bird-watching • Culture, architecture, history, opera • Liverpool, home of pop group and famous football team • Cumbria and Lake District, beautiful scenery, rest and relax • Manchester – Museums, galleries, theatres, clubs, bars • City of Lancaster, Pennine hills • Seaside resorts, hills and plains • Chester – Roman city • More information on website
<p>Role Play C</p> <ul style="list-style-type: none"> • Dell sells direct to the customer • Online or by phone • Cost savings • You get the facilities you want • Talk direct to the experts • Advice and service • Convenient – delivered right to your door • Company will install computer for you, if desired • Special offers online • Contact details and telephone online • Times for contact