

**15 March – 15 May 2012**

**AS GCE SPANISH**

**F721** Speaking

**ROLE PLAY A**



- This Candidate's Sheet is to be handed to the candidate 20 minutes in advance.

**INFORMATION FOR CANDIDATES**

- You should use the time available to study the instructions overleaf. You may make notes on this sheet, which you should take into the examination room with you.
- When the test begins you will be asked:
  - (i) to carry out the task described overleaf
  - (ii) to discuss with the examiner the sub-topic which you have prepared. The topic must refer to Spain or a Spanish-speaking country.
- You may **not** use a dictionary.

There are two sections to this examination:

- A Role-play (5-6 mins) [30 Marks]
- B Topic discussion (9-10 mins) [30 Marks]

- Candidates may bring into the examination a maximum of one side of A4 notes for the Topic discussion.

**ROLE PLAY A – CANDIDATE’S SHEET**

**Note to the candidate:** You should begin by asking the two questions. The task can then be completed in the order you prefer. You should base your replies on the English text, but sometimes you will need to use your imagination and initiative to react to the examiner’s comments and questions.

**Situación**

Estás hablando con un vecino español/una vecina española que está estudiando en Gran Bretaña. Tiene problemas con su ordenador y te pide información.

**Tarea**

Tienes un folleto sobre ***Nerds-at-work***, una compañía que se especializa en la informática. Tienes que explicarle al español/a la española el contenido del folleto y convencerle de que vale la pena contactar con la compañía.

**Primero debes preguntar sobre:**

- 1 detalles del problema**
- 2 su experiencia con ordenadores**

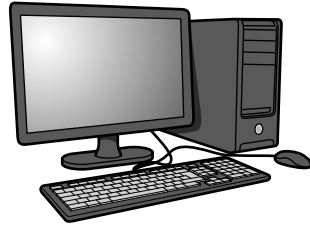
Tienes que explicar:

- detalles de la compañía ***Nerds-at-work***
- dónde ofrece sus servicios
- lo que ofrece
- precios y facilidades de pago
- y, ¿si no quieres comprar?

Durante la conversación también se hablará de:

- si prefieres comprar por Internet o en una tienda local
- si en general la informática es algo positivo

## Having trouble with new technology?



**Nerds-at-work** is a small company with over twenty years' experience. We offer assistance in all aspects of computers. At work or home, we can come and sort it out.



We stock a full range of popular makes and can advise on choice and purchase.

At no extra cost we install your equipment, including any optional programs.

As agents for several broadband companies, we will make sure you have the best system up and running – as quickly as possible.

If you already have a computer but are experiencing problems, we can advise whether to repair or replace.

Competitive prices – discounts for students and pensioners.



All credit cards accepted.



Prefer to rent on a month-by-month basis? We also offer an all-inclusive deal to suit your needs – computer, broadband and mobile phone. Ring or email us for details.

***Nerds-at-work – complete IT Solutions***

**Copyright Information**

OCR is committed to seeking permission to reproduce all third-party content that it uses in its assessment materials. OCR has attempted to identify and contact all copyright holders whose work is used in this paper. To avoid the issue of disclosure of answer-related information to candidates, all copyright acknowledgements are reproduced in the OCR Copyright Acknowledgements Booklet. This is produced for each series of examinations and is freely available to download from our public website ([www.ocr.org.uk](http://www.ocr.org.uk)) after the live examination series.

If OCR has unwittingly failed to correctly acknowledge or clear any third-party content in this assessment material, OCR will be happy to correct its mistake at the earliest possible opportunity.

For queries or further information please contact the Copyright Team, First Floor, 9 Hills Road, Cambridge CB2 1GE.

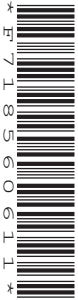
OCR is part of the Cambridge Assessment Group; Cambridge Assessment is the brand name of University of Cambridge Local Examinations Syndicate (UCLES), which is itself a department of the University of Cambridge.

**15 March – 15 May 2012**

**AS GCE SPANISH**

**F721** Speaking

**ROLE PLAY B**



- This Candidate's Sheet is to be handed to the candidate 20 minutes in advance.

**INFORMATION FOR CANDIDATES**

- You should use the time available to study the instructions overleaf. You may make notes on this sheet, which you should take into the examination room with you.
- When the test begins you will be asked:
  - (i) to carry out the task described overleaf
  - (ii) to discuss with the examiner the sub-topic which you have prepared. The topic must refer to Spain or a Spanish-speaking country.
- You may **not** use a dictionary.

There are two sections to this examination:

- |                                |            |
|--------------------------------|------------|
| A Role-play (5-6 mins)         | [30 Marks] |
| B Topic discussion (9-10 mins) | [30 Marks] |

- Candidates may bring into the examination a maximum of one side of A4 notes for the Topic discussion.

**ROLE PLAY B – CANDIDATE’S SHEET**

**Note to the candidate:** You should begin by asking the two questions. The task can then be completed in the order you prefer. You should base your replies on the English text, but sometimes you will need to use your imagination and initiative to react to the examiner’s comments and questions.

**Situación**

Visitas a tu amigo/amiga en España que quiere ir a Gran Bretaña con un grupo de compañeros el año que viene. Te pide información.

**Tarea**

Tienes un folleto sobre ***Spartan Adventures***. Tienes que explicarle a tu amigo/amiga el contenido del folleto y convencerle de que vale la pena participar en uno de sus cursos.

**Primero debes preguntar sobre:**

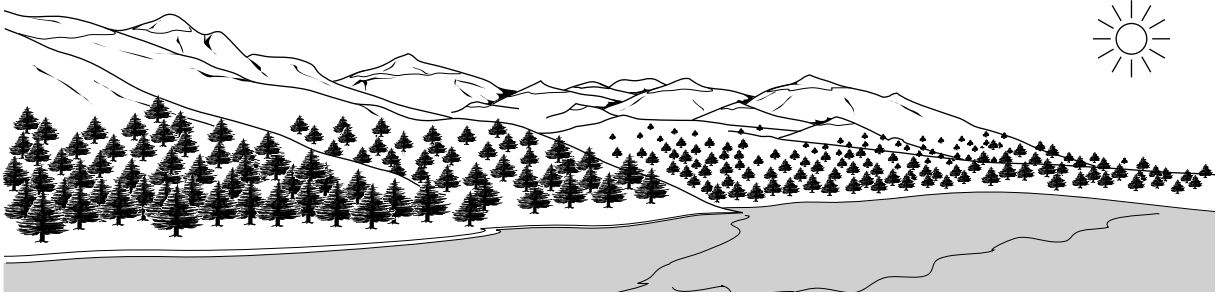
- 1 la razón de su visita a Gran Bretaña**
- 2 la experiencia que el grupo tiene de los deportes**

Tienes que explicar:

- lo que es ***Spartan Adventures*** y dónde ofrece sus actividades
- por qué puedes recomendar la compañía
- detalles de lo que ofrece
- tipos de alojamiento y comida
- por qué puede ser atractivo para extranjeros
- cómo pueden llegar allí

Durante la conversación también se hablará de:

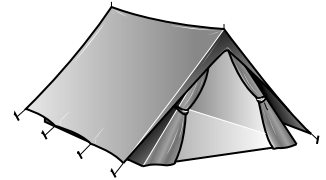
- tu propia actitud hacia los deportes
- si es mejor visitar un país extranjero en grupo o solo



## Experience the great outdoors

**Spartan Adventures** started in Scotland thirty years ago and now specialises in outdoor activities throughout the British Isles for people of all ages.

All instructors are highly experienced and professionally qualified.



Now is your chance to try water sports, diving, mountain climbing and riding.

You can even learn to swim.

Most courses offered throughout the year and last for six days. Special arrangements for groups.

Accommodation is mostly in centrally-heated cabins with modern facilities, but for those seeking to get back to nature you can camp in remote areas.

Healthy meals all included – special diets catered for.



Visitors from overseas can discover traditional local sports. You can combine activities with improving your English as we have links with well-established language schools. We also offer a full programme of social activities.

Come by car or we can collect you from the nearest station or airport.

**Copyright Information**

OCR is committed to seeking permission to reproduce all third-party content that it uses in its assessment materials. OCR has attempted to identify and contact all copyright holders whose work is used in this paper. To avoid the issue of disclosure of answer-related information to candidates, all copyright acknowledgements are reproduced in the OCR Copyright Acknowledgements Booklet. This is produced for each series of examinations and is freely available to download from our public website ([www.ocr.org.uk](http://www.ocr.org.uk)) after the live examination series.

If OCR has unwittingly failed to correctly acknowledge or clear any third-party content in this assessment material, OCR will be happy to correct its mistake at the earliest possible opportunity.

For queries or further information please contact the Copyright Team, First Floor, 9 Hills Road, Cambridge CB2 1GE.

OCR is part of the Cambridge Assessment Group; Cambridge Assessment is the brand name of University of Cambridge Local Examinations Syndicate (UCLES), which is itself a department of the University of Cambridge.



**15 March – 15 May 2012**

**AS GCE SPANISH**

**F721** Speaking

**ROLE PLAY C**



- This Candidate's Sheet is to be handed to the candidate 20 minutes in advance.

**INFORMATION FOR CANDIDATES**

- You should use the time available to study the instructions overleaf. You may make notes on this sheet, which you should take into the examination room with you.
- When the test begins you will be asked:
  - (i) to carry out the task described overleaf
  - (ii) to discuss with the examiner the sub-topic which you have prepared. The topic must refer to Spain or a Spanish-speaking country.
- You may **not** use a dictionary.

There are two sections to this examination:

- A Role-play (5-6 mins) [30 Marks]
- B Topic discussion (9-10 mins) [30 Marks]

- Candidates may bring into the examination a maximum of one side of A4 notes for the Topic discussion.

**ROLE PLAY C – CANDIDATE’S SHEET**

**Note to the candidate:** You should begin by asking the two questions. The task can then be completed in the order you prefer. You should base your replies on the English text, but sometimes you will need to use your imagination and initiative to react to the examiner’s comments and questions.

**Situación**

Estás hablando con un español/una española que está planeando pasar unas semanas estudiando en Gran Bretaña y te pide información sobre el alojamiento.

**Tarea**

Tienes un folleto sobre **Digsfinders**. Tienes que explicarle al español/a la española el contenido del folleto y convencerle de que vale la pena contactar con la agencia.

**Primero debes preguntar sobre:**

- 1 la duración de la estancia**
- 2 la intención de la visita**

Tienes que explicar:

- lo que es **Digsfinders**
- detalles del alojamiento que ofrece
- lo que no se incluye en el precio básico
- por qué puedes tener confianza en su servicio
- cómo puedes informarte de los precios y el alojamiento disponible

Durante la conversación también se hablará de:

- si, como estudiante, es mejor vivir en un piso o con una familia
- tu opinión sobre los beneficios o inconvenientes de vivir en otro país

## Looking for accommodation?



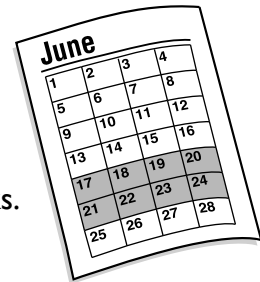
### Digsfinders can help

We find rooms or flats for overseas students or visitors to the area.

All properties are within walking distance or a short bus ride from the centre and colleges.

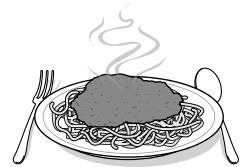
House owners will usually be on hand to help with any problems.

You can rent for up to six months – the minimum period is two weeks.



Choose rooms with private facilities or with shared kitchen and bathroom.

Other services – for example, meals or cleaning – may be available at extra cost.



We have letters of recommendation from previous clients. References will be required from new clients.

All properties inspected regularly by us.

Examples of types of properties and prices are on our website but we have many more on offer at our office – open daily.

Some of our staff may speak your language – so call in today!



**Copyright Information**

OCR is committed to seeking permission to reproduce all third-party content that it uses in its assessment materials. OCR has attempted to identify and contact all copyright holders whose work is used in this paper. To avoid the issue of disclosure of answer-related information to candidates, all copyright acknowledgements are reproduced in the OCR Copyright Acknowledgements Booklet. This is produced for each series of examinations and is freely available to download from our public website ([www.ocr.org.uk](http://www.ocr.org.uk)) after the live examination series.

If OCR has unwittingly failed to correctly acknowledge or clear any third-party content in this assessment material, OCR will be happy to correct its mistake at the earliest possible opportunity.

For queries or further information please contact the Copyright Team, First Floor, 9 Hills Road, Cambridge CB2 1GE.

OCR is part of the Cambridge Assessment Group; Cambridge Assessment is the brand name of University of Cambridge Local Examinations Syndicate (UCLES), which is itself a department of the University of Cambridge.

**15 March – 15 May 2012**

**AS GCE SPANISH**

**F721** Speaking

**ROLE PLAY D**



- This Candidate's Sheet is to be handed to the candidate 20 minutes in advance.

**INFORMATION FOR CANDIDATES**

- You should use the time available to study the instructions overleaf. You may make notes on this sheet, which you should take into the examination room with you.
- When the test begins you will be asked:
  - (i) to carry out the task described overleaf
  - (ii) to discuss with the examiner the sub-topic which you have prepared. The topic must refer to Spain or a Spanish-speaking country.
- You may **not** use a dictionary.

There are two sections to this examination:

- A Role-play (5-6 mins) [30 Marks]
- B Topic discussion (9-10 mins) [30 Marks]

- Candidates may bring into the examination a maximum of one side of A4 notes for the Topic discussion.

**ROLE PLAY D – CANDIDATE’S SHEET**

**Note to the candidate:** You should begin by asking the two questions. The task can then be completed in the order you prefer. You should base your replies on the English text, but sometimes you will need to use your imagination and initiative to react to the examiner’s comments and questions.

**Situación**

Trabajas en una oficina de turismo en Gran Bretaña. Estás hablando con un español/una española que está planeando una visita en el futuro con un grupo de gente y te pide información.

**Tarea**

Tienes un folleto sobre un ferrocarril restaurado. Tienes que explicarle al español/a la española el contenido del folleto y convencerle de que vale la pena hacer la visita.

**Primero debes preguntar sobre:**

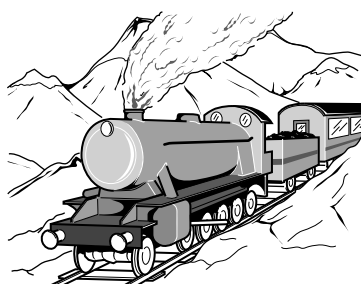
- 1 detalles del grupo**
- 2 los intereses de los participantes**

Tienes que explicar:

- lo que es y por dónde va
- por qué es especial
- lo que puedes hacer allí
- por qué es apropiado para todo tipo de visitantes
- cómo llegar

Durante la conversación también se hablará de:

- tus propias ideas para organizar la visita
- tu opinión sobre los ferrocarriles



## Railway through the English countryside

This historic and once important line was closed forty years ago, but it has been restored by volunteers and reopened.

The line crosses 10 miles of beautiful countryside, with spectacular views of unspoilt valleys and hills and even the distant Black Mountains in Wales. The trains also run through the longest tunnel (almost 700 yards) of any tourist railway.

The sight, sound and smell of vintage steam trains stir memories for older people, but also excite younger visitors.

You can even drive an engine (see our website or phone for information).



A return ticket allows you to travel as often as you want throughout the day.



Groups are welcome – special discounts if booked three weeks in advance.

Refreshments are available on the trains.

Help for visitors with limited mobility.

Free parking, tearoom and gift shop at Toddington Station, within easy reach of the M5 motorway.

*Gloucester Warwickshire Railway*

**Copyright Information**

OCR is committed to seeking permission to reproduce all third-party content that it uses in its assessment materials. OCR has attempted to identify and contact all copyright holders whose work is used in this paper. To avoid the issue of disclosure of answer-related information to candidates, all copyright acknowledgements are reproduced in the OCR Copyright Acknowledgements Booklet. This is produced for each series of examinations and is freely available to download from our public website ([www.ocr.org.uk](http://www.ocr.org.uk)) after the live examination series.

If OCR has unwittingly failed to correctly acknowledge or clear any third-party content in this assessment material, OCR will be happy to correct its mistake at the earliest possible opportunity.

For queries or further information please contact the Copyright Team, First Floor, 9 Hills Road, Cambridge CB2 1GE.

OCR is part of the Cambridge Assessment Group; Cambridge Assessment is the brand name of University of Cambridge Local Examinations Syndicate (UCLES), which is itself a department of the University of Cambridge.