



General Certificate of Education
Advanced Level Examination
June 2011

Spanish

SPA4T/SPA4V

Unit 4 Speaking Test

Examiner's Material

To be conducted by the teacher examiner between 7 March and 15 May 2011 (SPA4T)

To be conducted by the visiting examiner between 7 March and 15 May 2011 (SPA4V)

Time allowed: 35 minutes (including 20 minutes preparation time)

Instructions

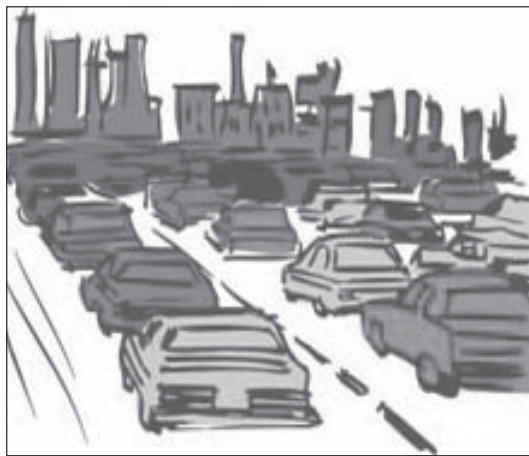
- During the 20 minutes preparation time candidates are required to prepare **one** of the two stimulus cards given to them.
- Candidates may make notes during the preparation time only on the Additional Answer Sheet provided. **They must not write on the card.**
- Candidates should take the stimulus card with them into the examination room. They may refer to the card and any notes they have made at any time during this section of the test.
- Candidates should hand the stimulus card and the Additional Answer Sheet to you before the start of the conversation section of the test.

Information

- The test will last approximately 15 minutes and will consist of a stimulus card (5 minutes), and a conversation based on the **two** Cultural Topics studied by the candidate (10 minutes).
- Candidates will be expected to choose one of the two opinions on their chosen stimulus card and outline their point of view to you for approximately one minute. They must then defend and justify this opinion.
- Candidates must **not** use a dictionary.

TARJETA A	
Topic	ENVIRONMENT
Sub-topic	Pollution

- Look at the card and read the two opinions in the speech bubbles.
- Choose **one** and think how you can convey and expand on its main ideas.
- Begin the discussion by outlining your point of view (this should take no longer than one minute).
- You must then be prepared to respond to anything the examiner might say and to justify your point of view.
- You may be required to explain something you have said, to respond to an opposing point of view expressed by the examiner, or to defend your expressed opinion(s).
- You may make notes in your preparation time and refer to them during this part of the test.



¿Cómo reducir la polución en las ciudades?

Opinión 1

La polución causada por la congestión de tráfico es cada vez peor. La única solución es prohibir los coches particulares en los centros urbanos.

Opinión 2

El coche particular es una necesidad. Excluir los coches de las ciudades no es ni práctico ni justo.

Notes for Examiners

Where the candidate is defending **Opinión 1**, you might use the following:

- las ventajas de ir en coche
- la necesidad de acudir al trabajo
- el sistema de transporte público inadecuado
- los ancianos, los minusválidos, las madres con niños pequeños

Where the candidate is defending **Opinión 2**, you might use the following:

- las emisiones de CO2
- la contaminación acústica
- el derecho a respirar aire limpio
- la seguridad de los peatones

Turn over ►

TARJETA B	
Topic	THE MULTICULTURAL SOCIETY
Sub-topic	Immigration

- Look at the card and read the two opinions in the speech bubbles.
- Choose **one** and think how you can convey and expand on its main ideas.
- Begin the discussion by outlining your point of view (this should take no longer than one minute).
- You must then be prepared to respond to anything the examiner might say and to justify your point of view.
- You may be required to explain something you have said, to respond to an opposing point of view expressed by the examiner, or to defend your expressed opinion(s).
- You may make notes in your preparation time and refer to them during this part of the test.



Los refugiados, ¿son todos iguales?

Opinión 1

El asilo político debe concederse sólo en casos extremos de persecución. Los inmigrantes económicos abusan del sistema.

Opinión 2

Deberíamos aceptar a todos los refugiados que vienen de países pobres. ¿No tienen derecho a buscar una vida mejor en otro país?

Notes for Examiners

Where the candidate is defending **Opinión 1**, you might use the following:

- los derechos humanos
- la igualdad de oportunidades
- la contribución de los inmigrantes
- una obligación moral

Where the candidate is defending **Opinión 2**, you might use the following:

- el número creciente de inmigrantes
- las declaraciones falsas de persecución
- la creciente demanda en servicios
- admitir a terroristas o criminales

Turn over ►

TARJETA C	
Topic	CONTEMPORARY SOCIAL ISSUES
Sub-topic	Law and order

- Look at the card and read the two opinions in the speech bubbles.
- Choose **one** and think how you can convey and expand on its main ideas.
- Begin the discussion by outlining your point of view (this should take no longer than one minute).
- You must then be prepared to respond to anything the examiner might say and to justify your point of view.
- You may be required to explain something you have said, to respond to an opposing point of view expressed by the examiner, or to defend your expressed opinion(s).
- You may make notes in your preparation time and refer to them during this part of the test.



La seguridad del ciudadano ¿Quién va a protegernos?

Opinión 1

Cada ciudadano tiene derecho a protegerse contra los delincuentes, incluso con armas cuando sea necesario.

Opinión 2

Mantener el orden es la responsabilidad de las fuerzas de seguridad. Dejemos a la policía imponer la ley.

Notes for Examiners

Where the candidate is defending **Opinión 1**, you might use the following:

- la vigilancia callejera
- la protección de los inocentes
- el proceso judicial
- la imparcialidad de la policía

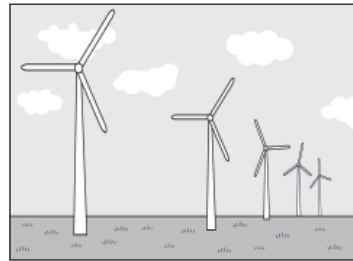
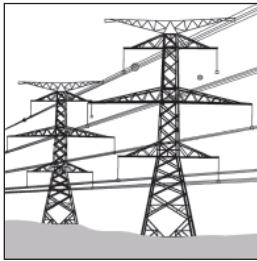
Where the candidate is defending **Opinión 2**, you might use the following:

- la vida/la propiedad en peligro
- una reacción inmediata
- una sociedad cada vez más violenta
- el efecto disuasorio

Turn over ►

TARJETA D	
Topic	ENVIRONMENT
Sub-topic	Energy

- Look at the card and read the two opinions in the speech bubbles.
- Choose **one** and think how you can convey and expand on its main ideas.
- Begin the discussion by outlining your point of view (this should take no longer than one minute).
- You must then be prepared to respond to anything the examiner might say and to justify your point of view.
- You may be required to explain something you have said, to respond to an opposing point of view expressed by the examiner, or to defend your expressed opinion(s).
- You may make notes in your preparation time and refer to them during this part of the test.



¿Quién va a producir nuestra energía?

Opinión 1

Lo más importante es ser autosuficiente en la producción de energía. Debemos desarrollar nuestras propias fuentes de energía.

Opinión 2

Producir energía es caro. Lo más lógico es comprar nuestra energía de aquellos países que tienen más recursos y mejor tecnología.

Notes for Examiners

Where the candidate is defending **Opinión 1**, you might use the following:

- la falta de recursos naturales
- los conocimientos tecnológicos de otros países
- la duplicación innecesaria
- la globalización inevitable

Where the candidate is defending **Opinión 2**, you might use the following:

- el suministro garantizado
- el gobierno en control
- el desarrollo de energías renovables
- la estabilidad de los precios

Turn over ►

TARJETA E	
Topic	THE MULTICULTURAL SOCIETY
Sub-topic	Integration

- Look at the card and read the two opinions in the speech bubbles.
- Choose **one** and think how you can convey and expand on its main ideas.
- Begin the discussion by outlining your point of view (this should take no longer than one minute).
- You must then be prepared to respond to anything the examiner might say and to justify your point of view.
- You may be required to explain something you have said, to respond to an opposing point of view expressed by the examiner, or to defend your expressed opinion(s).
- You may make notes in your preparation time and refer to them during this part of the test.



La discriminación positiva: ¿una ayuda hacia la integración?

Opinión 1

Cada organización y empresa debe emplear una cuota de personas de minorías étnicas para reflejar la diversidad en la sociedad.

Opinión 2

Se debe contratar a la persona mejor cualificada para un empleo, sin pensar en su origen étnico. La discriminación positiva es injusta.

Notes for Examiners

Where the candidate is defending **Opinión 1**, you might use the following:

- rechazar al mejor candidato
- la manipulación política
- la creación de resentimiento
- ¿evidencia de resultados positivos?

Where the candidate is defending **Opinión 2**, you might use the following:

- la igualdad de oportunidades
- la inclusión de las minorías
- una obligación moral
- la promoción de actitudes tolerantes

Turn over ►

TARJETA F	
Topic	CONTEMPORARY SOCIAL ISSUES
Sub-topic	Impact of scientific and technological progress

- Look at the card and read the two opinions in the speech bubbles.
- Choose **one** and think how you can convey and expand on its main ideas.
- Begin the discussion by outlining your point of view (this should take no longer than one minute).
- You must then be prepared to respond to anything the examiner might say and to justify your point of view.
- You may be required to explain something you have said, to respond to an opposing point of view expressed by the examiner, or to defend your expressed opinion(s).
- You may make notes in your preparation time and refer to them during this part of the test.



La medicina, ¿lo puede remediar todo?

Opinión 1

Hoy en día, gracias a los avances científicos, podemos superar los límites impuestos por la naturaleza. Vamos hacia el perfeccionamiento del cuerpo humano.

Opinión 2

En la actualidad, la medicina interviene demasiado en el funcionamiento del cuerpo humano. Hay cosas que sólo debe decidir la Madre Naturaleza.

Notes for Examiners

Where the candidate is defending **Opinión 1**, you might use the following:

- el culto a la belleza
- los bebés “diseño”
- las madres mayores
- el coste de los tratamientos

Where the candidate is defending **Opinión 2**, you might use the following:

- la cirugía estética
- la fertilización in vitro
- los trasplantes
- las células madre

Blank Page

Blank Page

Blank Page