



General Certificate of Education
Advanced Level Examination
June 2011

Spanish

SPA4T/SPA4V

Unit 4 Speaking Test

Candidate's Material

To be conducted by the teacher examiner between 7 March and 15 May 2011 (SPA4T)
To be conducted by the visiting examiner between 7 March and 15 May 2011 (SPA4V)

Time allowed: 35 minutes (including 20 minutes preparation time)

Instructions

- During the 20 minutes preparation time you are required to prepare **one** of the two stimulus cards given to you.
- You may make notes during the preparation time only on the Additional Answer Sheet provided.
You must not write on this card.
- You should take the stimulus card with you into the examination room. You may refer to the card and any notes you have made at any time during this section of the test.
- Hand the stimulus card and the Additional Answer Sheet to the examiner before the start of the conversation section of the test.

Information

- The test will last approximately 15 minutes and will consist of a stimulus card (5 minutes), and a conversation based on the **two** Cultural Topics you have studied (10 minutes).
- You will be expected to choose one of the two opinions on your chosen stimulus card and outline your point of view to the examiner for approximately one minute. You must then defend and justify this opinion.
- You must **not** use a dictionary.

TARJETA A	
Topic	ENVIRONMENT
Sub-topic	Pollution

- Look at the card and read the two opinions in the speech bubbles.
- Choose **one** and think how you can convey and expand on its main ideas.
- Begin the discussion by outlining your point of view (this should take no longer than one minute).
- You must then be prepared to respond to anything the examiner might say and to justify your point of view.
- You may be required to explain something you have said, to respond to an opposing point of view expressed by the examiner, or to defend your expressed opinion(s).
- You may make notes in your preparation time and refer to them during this part of the test.



¿Cómo reducir la polución en las ciudades?

Opinión 1

La polución causada por la congestión de tráfico es cada vez peor. La única solución es prohibir los coches particulares en los centros urbanos.

Opinión 2

El coche particular es una necesidad. Excluir los coches de las ciudades no es ni práctico ni justo.



General Certificate of Education
Advanced Level Examination
June 2011

Spanish

SPA4T/SPA4V

Unit 4 Speaking Test

Candidate's Material

To be conducted by the teacher examiner between 7 March and 15 May 2011 (SPA4T)
To be conducted by the visiting examiner between 7 March and 15 May 2011 (SPA4V)

Time allowed: 35 minutes (including 20 minutes preparation time)

Instructions

- During the 20 minutes preparation time you are required to prepare **one** of the two stimulus cards given to you.
- You may make notes during the preparation time only on the Additional Answer Sheet provided.
You must not write on this card.
- You should take the stimulus card with you into the examination room. You may refer to the card and any notes you have made at any time during this section of the test.
- Hand the stimulus card and the Additional Answer Sheet to the examiner before the start of the conversation section of the test.

Information

- The test will last approximately 15 minutes and will consist of a stimulus card (5 minutes), and a conversation based on the **two** Cultural Topics you have studied (10 minutes).
- You will be expected to choose one of the two opinions on your chosen stimulus card and outline your point of view to the examiner for approximately one minute. You must then defend and justify this opinion.
- You must **not** use a dictionary.

TARJETA B	
Topic	THE MULTICULTURAL SOCIETY
Sub-topic	Immigration

- Look at the card and read the two opinions in the speech bubbles.
- Choose **one** and think how you can convey and expand on its main ideas.
- Begin the discussion by outlining your point of view (this should take no longer than one minute).
- You must then be prepared to respond to anything the examiner might say and to justify your point of view.
- You may be required to explain something you have said, to respond to an opposing point of view expressed by the examiner, or to defend your expressed opinion(s).
- You may make notes in your preparation time and refer to them during this part of the test.



Los refugiados, ¿son todos iguales?

Opinión 1

El asilo político debe concederse sólo en casos extremos de persecución. Los inmigrantes económicos abusan del sistema.

Opinión 2

Deberíamos aceptar a todos los refugiados que vienen de países pobres. ¿No tienen derecho a buscar una vida mejor en otro país?



General Certificate of Education
Advanced Level Examination
June 2011

Spanish

SPA4T/SPA4V

Unit 4 Speaking Test

Candidate's Material

To be conducted by the teacher examiner between 7 March and 15 May 2011 (SPA4T)
To be conducted by the visiting examiner between 7 March and 15 May 2011 (SPA4V)

Time allowed: 35 minutes (including 20 minutes preparation time)

Instructions

- During the 20 minutes preparation time you are required to prepare **one** of the two stimulus cards given to you.
- You may make notes during the preparation time only on the Additional Answer Sheet provided.
You must not write on this card.
- You should take the stimulus card with you into the examination room. You may refer to the card and any notes you have made at any time during this section of the test.
- Hand the stimulus card and the Additional Answer Sheet to the examiner before the start of the conversation section of the test.

Information

- The test will last approximately 15 minutes and will consist of a stimulus card (5 minutes), and a conversation based on the **two** Cultural Topics you have studied (10 minutes).
- You will be expected to choose one of the two opinions on your chosen stimulus card and outline your point of view to the examiner for approximately one minute. You must then defend and justify this opinion.
- You must **not** use a dictionary.

TARJETA C	
Topic	CONTEMPORARY SOCIAL ISSUES
Sub-topic	Law and order

- Look at the card and read the two opinions in the speech bubbles.
- Choose **one** and think how you can convey and expand on its main ideas.
- Begin the discussion by outlining your point of view (this should take no longer than one minute).
- You must then be prepared to respond to anything the examiner might say and to justify your point of view.
- You may be required to explain something you have said, to respond to an opposing point of view expressed by the examiner, or to defend your expressed opinion(s).
- You may make notes in your preparation time and refer to them during this part of the test.



La seguridad del ciudadano ¿Quién va a protegernos?

Opinión 1

Cada ciudadano tiene derecho a protegerse contra los delincuentes, incluso con armas cuando sea necesario.

Opinión 2

Mantener el orden es la responsabilidad de las fuerzas de seguridad. Dejemos a la policía imponer la ley.



General Certificate of Education
Advanced Level Examination
June 2011

Spanish

SPA4T/SPA4V

Unit 4 Speaking Test

Candidate's Material

To be conducted by the teacher examiner between 7 March and 15 May 2011 (SPA4T)
To be conducted by the visiting examiner between 7 March and 15 May 2011 (SPA4V)

Time allowed: 35 minutes (including 20 minutes preparation time)

Instructions

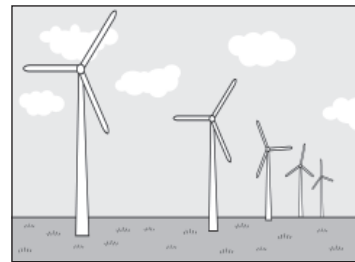
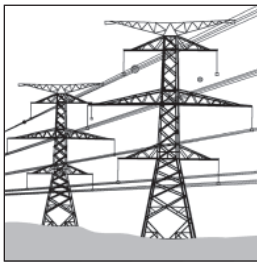
- During the 20 minutes preparation time you are required to prepare **one** of the two stimulus cards given to you.
- You may make notes during the preparation time only on the Additional Answer Sheet provided.
You must not write on this card.
- You should take the stimulus card with you into the examination room. You may refer to the card and any notes you have made at any time during this section of the test.
- Hand the stimulus card and the Additional Answer Sheet to the examiner before the start of the conversation section of the test.

Information

- The test will last approximately 15 minutes and will consist of a stimulus card (5 minutes), and a conversation based on the **two** Cultural Topics you have studied (10 minutes).
- You will be expected to choose one of the two opinions on your chosen stimulus card and outline your point of view to the examiner for approximately one minute. You must then defend and justify this opinion.
- You must **not** use a dictionary.

TARJETA D	
Topic	ENVIRONMENT
Sub-topic	Energy

- Look at the card and read the two opinions in the speech bubbles.
- Choose **one** and think how you can convey and expand on its main ideas.
- Begin the discussion by outlining your point of view (this should take no longer than one minute).
- You must then be prepared to respond to anything the examiner might say and to justify your point of view.
- You may be required to explain something you have said, to respond to an opposing point of view expressed by the examiner, or to defend your expressed opinion(s).
- You may make notes in your preparation time and refer to them during this part of the test.



¿Quién va a producir nuestra energía?

Opinión 1

Lo más importante es ser autosuficiente en la producción de energía. Debemos desarrollar nuestras propias fuentes de energía.

Opinión 2

Producir energía es caro. Lo más lógico es comprar nuestra energía de aquellos países que tienen más recursos y mejor tecnología.



General Certificate of Education
Advanced Level Examination
June 2011

Spanish

SPA4T/SPA4V

Unit 4 Speaking Test

Candidate's Material

To be conducted by the teacher examiner between 7 March and 15 May 2011 (SPA4T)
To be conducted by the visiting examiner between 7 March and 15 May 2011 (SPA4V)

Time allowed: 35 minutes (including 20 minutes preparation time)

Instructions

- During the 20 minutes preparation time you are required to prepare **one** of the two stimulus cards given to you.
- You may make notes during the preparation time only on the Additional Answer Sheet provided.
You must not write on this card.
- You should take the stimulus card with you into the examination room. You may refer to the card and any notes you have made at any time during this section of the test.
- Hand the stimulus card and the Additional Answer Sheet to the examiner before the start of the conversation section of the test.

Information

- The test will last approximately 15 minutes and will consist of a stimulus card (5 minutes), and a conversation based on the **two** Cultural Topics you have studied (10 minutes).
- You will be expected to choose one of the two opinions on your chosen stimulus card and outline your point of view to the examiner for approximately one minute. You must then defend and justify this opinion.
- You must **not** use a dictionary.

TARJETA E	
Topic	THE MULTICULTURAL SOCIETY
Sub-topic	Integration

- Look at the card and read the two opinions in the speech bubbles.
- Choose **one** and think how you can convey and expand on its main ideas.
- Begin the discussion by outlining your point of view (this should take no longer than one minute).
- You must then be prepared to respond to anything the examiner might say and to justify your point of view.
- You may be required to explain something you have said, to respond to an opposing point of view expressed by the examiner, or to defend your expressed opinion(s).
- You may make notes in your preparation time and refer to them during this part of the test.



La discriminación positiva: ¿una ayuda hacia la integración?

Opinión 1

Cada organización y empresa debe emplear una cuota de personas de minorías étnicas para reflejar la diversidad en la sociedad.

Opinión 2

Se debe contratar a la persona mejor cualificada para un empleo, sin pensar en su origen étnico. La discriminación positiva es injusta.



General Certificate of Education
Advanced Level Examination
June 2011

Spanish

SPA4T/SPA4V

Unit 4 Speaking Test

Candidate's Material

To be conducted by the teacher examiner between 7 March and 15 May 2011 (SPA4T)
To be conducted by the visiting examiner between 7 March and 15 May 2011 (SPA4V)

Time allowed: 35 minutes (including 20 minutes preparation time)

Instructions

- During the 20 minutes preparation time you are required to prepare **one** of the two stimulus cards given to you.
- You may make notes during the preparation time only on the Additional Answer Sheet provided.
You must not write on this card.
- You should take the stimulus card with you into the examination room. You may refer to the card and any notes you have made at any time during this section of the test.
- Hand the stimulus card and the Additional Answer Sheet to the examiner before the start of the conversation section of the test.

Information

- The test will last approximately 15 minutes and will consist of a stimulus card (5 minutes), and a conversation based on the **two** Cultural Topics you have studied (10 minutes).
- You will be expected to choose one of the two opinions on your chosen stimulus card and outline your point of view to the examiner for approximately one minute. You must then defend and justify this opinion.
- You must **not** use a dictionary.

TARJETA F	
Topic	CONTEMPORARY SOCIAL ISSUES
Sub-topic	Impact of scientific and technological progress

- Look at the card and read the two opinions in the speech bubbles.
- Choose **one** and think how you can convey and expand on its main ideas.
- Begin the discussion by outlining your point of view (this should take no longer than one minute).
- You must then be prepared to respond to anything the examiner might say and to justify your point of view.
- You may be required to explain something you have said, to respond to an opposing point of view expressed by the examiner, or to defend your expressed opinion(s).
- You may make notes in your preparation time and refer to them during this part of the test.



La medicina, ¿lo puede remediar todo?

Opinión 1

Hoy en día, gracias a los avances científicos, podemos superar los límites impuestos por la naturaleza. Vamos hacia el perfeccionamiento del cuerpo humano.

Opinión 2

En la actualidad, la medicina interviene demasiado en el funcionamiento del cuerpo humano. Hay cosas que sólo debe decidir la Madre Naturaleza.