



General Certificate of Education
Advanced Subsidiary Examination
June 2011

Spanish

SPA2T/SPA2V

Unit 2 Speaking Test

Candidate's Material

To be conducted by the teacher examiner between 7 March and 15 May 2011 (SPA2T)
To be conducted by the visiting examiner between 7 March and 15 May 2011 (SPA2V)

Time allowed: 35 minutes (including 20 minutes preparation time)

Instructions

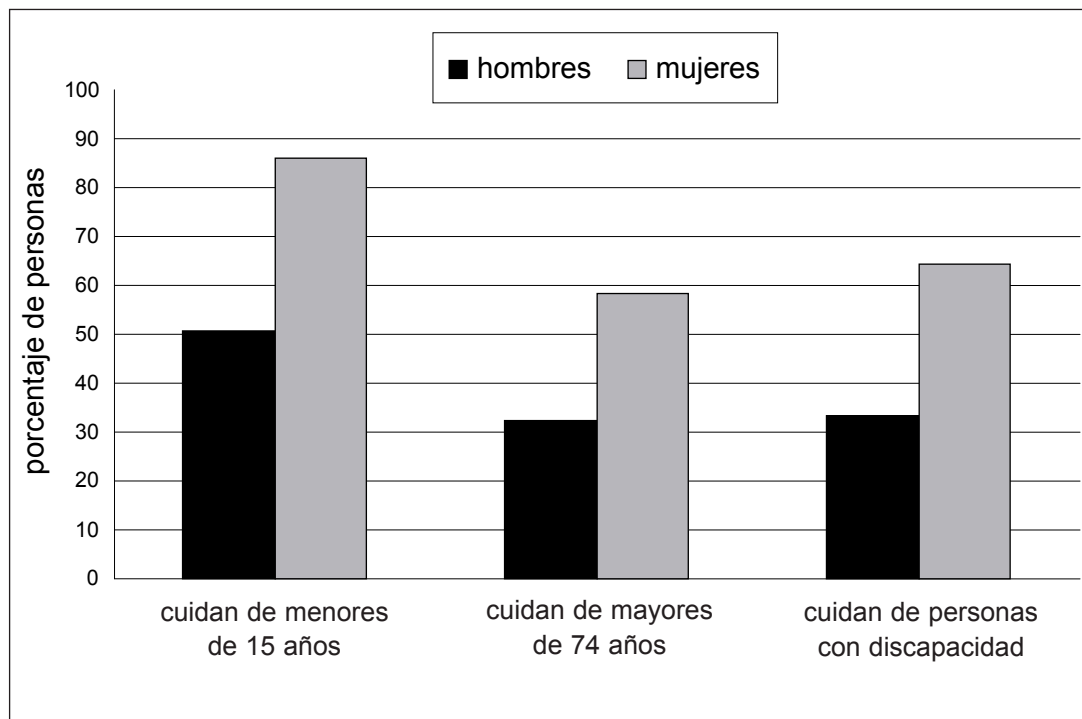
- During the 20 minutes preparation time you are required to prepare **one** of the two stimulus cards given to you.
- You may make notes during the preparation time only on the Additional Answer Sheet provided.
You must not write on this card.
- You should take the stimulus card with you into the examination room. You may refer to the card and any notes you have made at any time during this section of the test.
- Hand the stimulus card and the Additional Answer Sheet to the examiner before the start of the conversation section of the test.

Information

- The test will last approximately 15 minutes and will consist of a stimulus card (5 minutes), and a conversation based on topics studied during the AS course (10 minutes).
- There are questions on each of the cards to provide guidance on the type of question the examiner will ask.
- You will be expected to respond to questions and discuss in **Spanish** broader issues arising from the chosen card.
- You must **not** use a dictionary.

TARJETA A	
Topic	FAMILY/RELATIONSHIPS
Sub-topic	Relationships within the family

¿Quién cuida en el hogar?



Las mujeres son las que suelen cuidar de los otros miembros de la familia

Preguntas

- ¿De qué trata esta tarjeta?
- ¿Por qué suelen ser las mujeres las que cuidan de los otros?
- ¿Qué tareas suelen hacer los hombres en el hogar?
- ¿Opinas que esta situación cambiará algún día?
- En tu opinión, ¿es posible la igualdad en el hogar?



General Certificate of Education
Advanced Subsidiary Examination
June 2011

Spanish

SPA2T/SPA2V

Unit 2 Speaking Test

Candidate's Material

To be conducted by the teacher examiner between 7 March and 15 May 2011 (SPA2T)
To be conducted by the visiting examiner between 7 March and 15 May 2011 (SPA2V)

Time allowed: 35 minutes (including 20 minutes preparation time)

Instructions

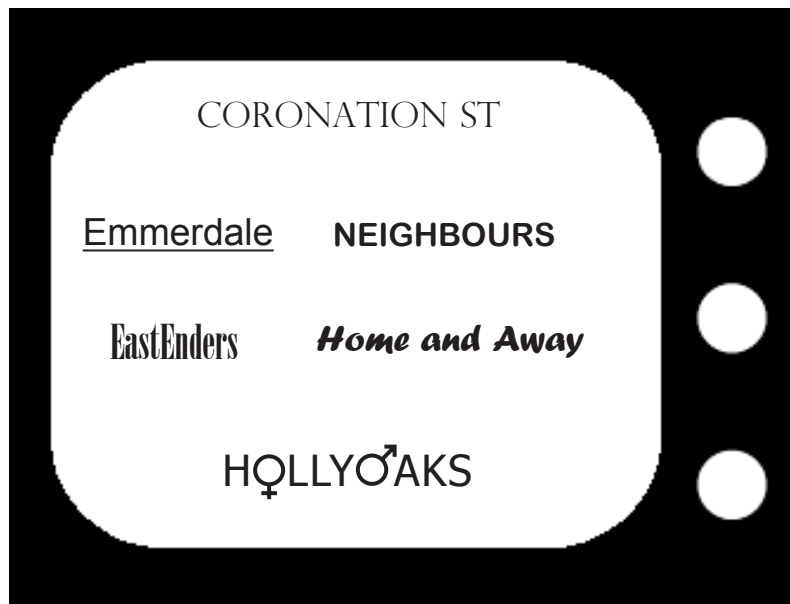
- During the 20 minutes preparation time you are required to prepare **one** of the two stimulus cards given to you.
- You may make notes during the preparation time only on the Additional Answer Sheet provided.
You must not write on this card.
- You should take the stimulus card with you into the examination room. You may refer to the card and any notes you have made at any time during this section of the test.
- Hand the stimulus card and the Additional Answer Sheet to the examiner before the start of the conversation section of the test.

Information

- The test will last approximately 15 minutes and will consist of a stimulus card (5 minutes), and a conversation based on topics studied during the AS course (10 minutes).
- There are questions on each of the cards to provide guidance on the type of question the examiner will ask.
- You will be expected to respond to questions and discuss in **Spanish** broader issues arising from the chosen card.
- You must **not** use a dictionary.

TARJETA B	
Topic	MEDIA
Sub-topic	Television

TELENOVELAS: ¿cultura o telebasura?



Según un estudio, los niños de 4 a 12 años ven más telenovelas que programas específicamente infantiles.

Preguntas

- ¿De qué trata esta tarjeta?
- ¿Crees que los personajes en las telenovelas son realistas?
- ¿Te parece bien que los niños de 4 años vean telenovelas?
- Según tú, ¿qué temas no deberían tratar las telenovelas?
- En tu opinión, ¿tienen las telenovelas una influencia positiva en los jóvenes?



General Certificate of Education
Advanced Subsidiary Examination
June 2011

Spanish

SPA2T/SPA2V

Unit 2 Speaking Test

Candidate's Material

To be conducted by the teacher examiner between 7 March and 15 May 2011 (SPA2T)
To be conducted by the visiting examiner between 7 March and 15 May 2011 (SPA2V)

Time allowed: 35 minutes (including 20 minutes preparation time)

Instructions

- During the 20 minutes preparation time you are required to prepare **one** of the two stimulus cards given to you.
- You may make notes during the preparation time only on the Additional Answer Sheet provided.
You must not write on this card.
- You should take the stimulus card with you into the examination room. You may refer to the card and any notes you have made at any time during this section of the test.
- Hand the stimulus card and the Additional Answer Sheet to the examiner before the start of the conversation section of the test.

Information

- The test will last approximately 15 minutes and will consist of a stimulus card (5 minutes), and a conversation based on topics studied during the AS course (10 minutes).
- There are questions on each of the cards to provide guidance on the type of question the examiner will ask.
- You will be expected to respond to questions and discuss in **Spanish** broader issues arising from the chosen card.
- You must **not** use a dictionary.

TARJETA C	
Topic	HEALTHY LIVING / LIFESTYLE
Sub-topic	Health and well-being

¿Cuánta cafeína consumes?



café 70- 100 mg



bebidas “energéticas”
80+ mg



Coca Cola 35 mg



té 50 mg

El consumo excesivo de cafeína aumenta la presión sanguínea y puede provocar insomnio, ansiedad, depresión y dependencia.

Preguntas

- ¿De qué trata esta tarjeta?
- Tú, ¿limitas tu consumo de cafeína?
- ¿Por qué beben muchos jóvenes las bebidas “energéticas”?
- ¿Crees que la cafeína es una droga?
- En tu opinión, ¿recibimos demasiados consejos sobre la nutrición hoy en día?



General Certificate of Education
Advanced Subsidiary Examination
June 2011

Spanish

SPA2T/SPA2V

Unit 2 Speaking Test

Candidate's Material

To be conducted by the teacher examiner between 7 March and 15 May 2011 (SPA2T)
To be conducted by the visiting examiner between 7 March and 15 May 2011 (SPA2V)

Time allowed: 35 minutes (including 20 minutes preparation time)

Instructions

- During the 20 minutes preparation time you are required to prepare **one** of the two stimulus cards given to you.
- You may make notes during the preparation time only on the Additional Answer Sheet provided.
You must not write on this card.
- You should take the stimulus card with you into the examination room. You may refer to the card and any notes you have made at any time during this section of the test.
- Hand the stimulus card and the Additional Answer Sheet to the examiner before the start of the conversation section of the test.

Information

- The test will last approximately 15 minutes and will consist of a stimulus card (5 minutes), and a conversation based on topics studied during the AS course (10 minutes).
- There are questions on each of the cards to provide guidance on the type of question the examiner will ask.
- You will be expected to respond to questions and discuss in **Spanish** broader issues arising from the chosen card.
- You must **not** use a dictionary.

TARJETA D	
Topic	HEALTHY LIVING/LIFESTYLE
Sub-topic	Sport/exercise

Excusas para no hacer ejercicio



Preguntas

- ¿De qué trata esta tarjeta?
- ¿Te parecen válidas estas excusas?
- ¿Por qué es importante hacer actividades físicas?
- ¿Qué tipo de actividad recomendarías a un amigo que no hace ejercicio?
- En tu opinión, ¿son perezosos los jóvenes de hoy?



General Certificate of Education
Advanced Subsidiary Examination
June 2011

Spanish

SPA2T/SPA2V

Unit 2 Speaking Test

Candidate's Material

To be conducted by the teacher examiner between 7 March and 15 May 2011 (SPA2T)
To be conducted by the visiting examiner between 7 March and 15 May 2011 (SPA2V)

Time allowed: 35 minutes (including 20 minutes preparation time)

Instructions

- During the 20 minutes preparation time you are required to prepare **one** of the two stimulus cards given to you.
- You may make notes during the preparation time only on the Additional Answer Sheet provided.
You must not write on this card.
- You should take the stimulus card with you into the examination room. You may refer to the card and any notes you have made at any time during this section of the test.
- Hand the stimulus card and the Additional Answer Sheet to the examiner before the start of the conversation section of the test.

Information

- The test will last approximately 15 minutes and will consist of a stimulus card (5 minutes), and a conversation based on topics studied during the AS course (10 minutes).
- There are questions on each of the cards to provide guidance on the type of question the examiner will ask.
- You will be expected to respond to questions and discuss in **Spanish** broader issues arising from the chosen card.
- You must **not** use a dictionary.

TARJETA E	
Topic	POPULAR CULTURE
Sub-topic	Cinema

Las películas aptas para los menores



dibujos animados



comedia



acción



sexo



terror



violencia

**El sistema oficial de clasificación existe
para proteger a los niños**

Preguntas

- ¿De qué trata esta tarjeta?
- ¿Piensas que los jóvenes respetan la clasificación oficial de las películas?
- ¿Qué papel tienen los padres en la selección de lo que ven sus hijos?
- ¿Crees que es necesario clasificar las películas?
- En tu opinión, ¿tiene el cine una influencia en el comportamiento de los jóvenes?



General Certificate of Education
Advanced Subsidiary Examination
June 2011

Spanish

SPA2T/SPA2V

Unit 2 Speaking Test

Candidate's Material

To be conducted by the teacher examiner between 7 March and 15 May 2011 (SPA2T)
To be conducted by the visiting examiner between 7 March and 15 May 2011 (SPA2V)

Time allowed: 35 minutes (including 20 minutes preparation time)

Instructions

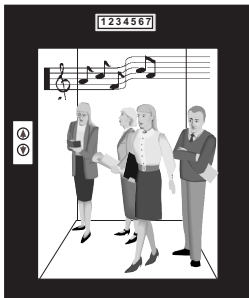
- During the 20 minutes preparation time you are required to prepare **one** of the two stimulus cards given to you.
- You may make notes during the preparation time only on the Additional Answer Sheet provided.
You must not write on this card.
- You should take the stimulus card with you into the examination room. You may refer to the card and any notes you have made at any time during this section of the test.
- Hand the stimulus card and the Additional Answer Sheet to the examiner before the start of the conversation section of the test.

Information

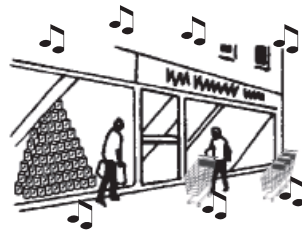
- The test will last approximately 15 minutes and will consist of a stimulus card (5 minutes), and a conversation based on topics studied during the AS course (10 minutes).
- There are questions on each of the cards to provide guidance on the type of question the examiner will ask.
- You will be expected to respond to questions and discuss in **Spanish** broader issues arising from the chosen card.
- You must **not** use a dictionary.

TARJETA F	
Topic	POPULAR CULTURE
Sub-topic	Music

La música ambiental está por todas partes



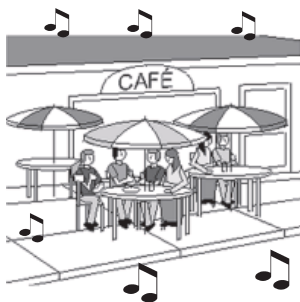
en el ascensor



en el supermercado



en la sala de espera



en el café



en el gimnasio



en el contestador de teléfono

Preguntas

- ¿De qué trata esta tarjeta?
- ¿Qué opinas de la música en los lugares públicos?
- ¿Qué tipo de música es preferible en una tienda?
- ¿Cómo reaccionas al escuchar la música de un contestador de teléfono?
- En tu opinión, ¿es siempre mejor el ambiente cuando hay música?