

## Tuesday 2 June 2015 – Morning

### AS GCE MUSIC

#### G353/01 Introduction to Historical Study in Music

Candidates answer on the Question Paper and on the Insert.

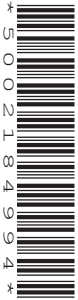
**OCR supplied materials:**

- Insert (G353/01/I – inserted)
- CD recording

**Other materials required:**

- Playback facilities with headphones for each individual candidate
- Manuscript paper (1 sheet)

**Duration:** 1 hour 45 minutes  
(plus 15 minutes' preparation)



Candidate forename		Candidate surname	
--------------------	--	-------------------	--

Centre number						Candidate number				
---------------	--	--	--	--	--	------------------	--	--	--	--

#### INSTRUCTIONS TO CANDIDATES

- The Insert can be found inside this document.
- Write your name clearly in capital letters, your centre number and candidate number in the boxes above.
- You will be allowed **15 minutes' preparation** time at the start of the examination. During this time you may listen to the CD and look at the Question Paper and the Insert, but you must not write.
- Write your answers in the space provided on the Question Paper or on the Insert.
- At the end of the examination, fasten the separate Insert securely to the Question Paper.
- Any suitable CD equipment may be used, including personal stereo players of good quality with both fast forward and reverse scan facilities: these should be fitted with fresh batteries if they cannot be powered from the mains electricity supply.

**SECTION A [30 marks]:** Choose **either** Extract 1A (Questions **1** to **14**) or Extract 1B (Questions **15** to **23**)

**SECTION B [40 marks]:** Answer **all** the questions in this section (Questions **24** to **33**)

**SECTION C [20 marks]:** Answer **one** question from this section (Questions **34** to **36**)

#### INFORMATION FOR CANDIDATES

- The number of marks is given in brackets [ ] at the end of each question or part question.
- The total number of marks for this paper is **90**.
- You will be awarded marks for the quality of written communication in your answer in Section C.
- This document consists of **16** pages. Any blank pages are indicated.

For Examiner's Use	
<b>Section A</b>	
<b>Section B</b>	
<b>Section C</b>	
<b>TOTAL</b>	

## SECTION A

Section A consists of **two** recorded extracts. Skeleton scores for both extracts are provided in the Insert.

Chose **either** Extract 1A (Questions **1** to **14**) **or** Extract 1B (Questions **15** to **23**) and answer all the questions on your chosen Extract.

**Extract 1A**

This extract is part of a movement from an instrumental sonata by Francesco Barsanti. The recording consists of **three** passages: **Passage 1i**, **Passage 1ii** and **Passage 1iii**.

*The music is performed at period pitch.*

**Passage 1i** (bar 1 to bar 16) [Ⓞ track 2]

1 Identify the instrument playing the melody line in this performance.

..... [1]

2 **On the score** circle **one** note that is ornamented in the **repeat** playing of the section from bar 1 to bar 8 of the recorded performance. [1]

3 **On the score** complete the bass line played by the 'cello from bar 5 to bar 8. The rhythm of this passage is indicated above the staff. [3]

4 What type of cadence occurs at bar 7 to bar 8? [1]

**Imperfect**

**Interrupted**

**Perfect**

**Plagal**

5 What is the key of the music at bar 9 to bar 10?

..... [1]

6 Which of the following terms describes most accurately the harmonic function of the note C printed at bar 10<sup>1</sup>? [1]

**Acciaccatura**

**Anticipatory note**

**Appoggiatura**

**Auxiliary note**

7 What **device** is heard in the melody from bar 9 to bar 12?

..... [1]

8 Name the instrument that plays chords in the accompaniment.

..... [1]

9 The following chords are used in the section from bar 13 to bar 15:

- I (F)
- Ib (F/A)
- IV (B<sub>b</sub>)
- V7b (C7/E)
- V7d (C7/B<sub>b</sub>)

**On the score** indicate where these chords occur by writing in the boxes provided. [5]

10 Which of the following terms describes the structure of **Passage 1i**? [1]

**Binary**

**Rondo**

**Ternary**

**Through-composed**

**Passage 1ii** (Bar 17 to bar 32) [Ⓞ track 3]

**11** On the score complete the melody line from bar 22 to bar 23. The rhythm of this passage is indicated above the staff. [4]

**12** Compare the accompaniment of **Passage 1ii** with that of **Passage 1i**, identifying similarities and differences.

.....

.....

.....

.....

.....

.....

.....

.....

.....

.....

..... [5]

**Passage 1iii** (Bar 33 to bar 48) [Ⓞ track 4]

**13** In what ways does the player vary the melody of bar 41 to bar 48 when the section is repeated in this performance (0'42" to 0'59")? Refer to bar numbers in your answer.

.....

.....

.....

.....

..... [4]

**14** Identify the figuration heard in the repeat of the accompaniment in bar 48. [1]

.....

**Extract 1B**

This extract consists of **two** passages (**Passage 1i** and **Passage 1ii**) from one of Malcolm Arnold's *English Dances*.

**Passage 1i** (Bar 1 to bar 37<sup>1</sup>) [Ⓢ track 5]

15 (a) Identify the instrument that plays the rhythm printed on the single-line stave in bars 1 to 4.  
..... [1]

(b) **On the score** complete the rhythm played by this instrument from bar 5 to bar 6. [3]

(c) Which of the following playing techniques is used in the section from bar 1 to bar 8? [1]

- Flam
- Paradiddle
- Roll
- Ruff

16 The main theme of the extract begins at the end of bar 4. Which **two** instruments play this theme from the end of bar 4 to bar 12?  
..... [2]

17 (a) **On the score** circle any **one** note of the printed melody from bar 5 to bar 12 that is ornamented in the recorded performance. [1]

(b) Describe precisely how the note you have identified in answer to (a) above is ornamented in this performance.  
.....  
..... [1]

18 Describe the music played by the **woodwind and brass** instruments in the section from bar 13 to bar 20. Give specific details in your answer.  
.....  
.....  
.....  
.....  
..... [4]

19 Identify the following cadences in **Passage 1i**.

[2]

(a) Bar 16		(b) Bar 20	
<input type="checkbox"/>	<b>Imperfect</b>	<input type="checkbox"/>	<b>Imperfect</b>
<input type="checkbox"/>	<b>Interrupted</b>	<input type="checkbox"/>	<b>Interrupted</b>
<input type="checkbox"/>	<b>Perfect</b>	<input type="checkbox"/>	<b>Perfect</b>
<input type="checkbox"/>	<b>Plagal</b>	<input type="checkbox"/>	<b>Plagal</b>

20 **On the score** complete the melody in bars 27 and 28. The rhythm of this passage is printed above the stave. [4]

21 Comment on the **harmony and tonality** of **Passage 1i**.

.....

.....

.....

.....

..... [4]

22 Describe the overall **structure** of **Passage 1i**.

.....

.....

..... [2]



SECTION B

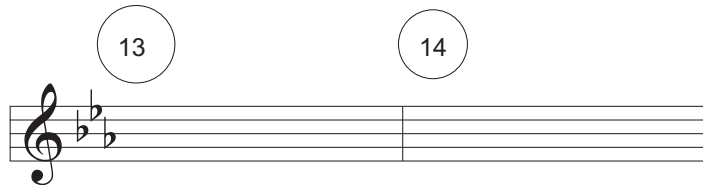
Answer **all** the questions in this section (Questions **24** to **33**).

**Extract 2**

The Insert contains a full score of **Extract 2** which is taken from the third movement of Mozart's *Concerto no.4 in E $\flat$  for horn & orchestra, K.495*.

Two recordings of the extract from **different** performances are provided on the CD: **Extract 2A** (Ⓢ track **7**) and **Extract 2B** (Ⓢ track **8**). No CD timings for these recordings are given in the score.

**24** On the blank stave below write out the solo horn part of bars 13 and 14 **at sounding pitch**. [4]



**25** Describe Mozart's use of **harmony** and **tonality** in this extract. Refer to specific bars and keys in your answer.

.....

.....

.....

.....

.....

..... [6]

**26** Describe Mozart's writing for the solo horn in this extract. Refer to specific bar numbers in your answer.

.....

.....

.....

..... [3]





**Extract 3** [© track 9]

There is no score for **Extract 3**.

This extract is part of *'Round Midnight* performed by the Miles Davis Quintet. The extract forms part of a chorus.

**29** Explain how the sound of the trumpet in this recording is characteristic of Miles Davis' playing.

.....  
.....  
.....  
.....  
..... [3]

**30** Describe the music of the accompaniment.

.....  
.....  
.....  
.....  
.....  
.....  
.....  
..... [6]

**31** Which of the following intervals is featured in the piano link at the end of the recorded extract? [1]

- Major 3rd
- Minor 3rd
- Major 6th
- Octave

32 Describe briefly the music that **immediately** follows the recorded extract.

.....  
.....  
.....  
.....  
..... [4]

33 Name the composer of the original melody '*Round Midnight*', on which this arrangement is based.

..... [1]





**ADDITIONAL ANSWER SPACE**

If additional answer space is required, you should use the following lined page(s). The question number(s) must be clearly shown in the margins.

A large area of lined paper for writing answers. It features a vertical margin line on the left side and horizontal dotted lines for writing. The lines are evenly spaced and extend across the width of the page.



**PLEASE DO NOT WRITE ON THIS PAGE**



**Copyright Information**

OCR is committed to seeking permission to reproduce all third-party content that it uses in its assessment materials. OCR has attempted to identify and contact all copyright holders whose work is used in this paper. To avoid the issue of disclosure of answer-related information to candidates, all copyright acknowledgements are reproduced in the OCR Copyright Acknowledgements Booklet. This is produced for each series of examinations and is freely available to download from our public website ([www.ocr.org.uk](http://www.ocr.org.uk)) after the live examination series.

If OCR has unwittingly failed to correctly acknowledge or clear any third-party content in this assessment material, OCR will be happy to correct its mistake at the earliest possible opportunity.

For queries or further information please contact the Copyright Team, First Floor, 9 Hills Road, Cambridge CB2 1GE.

OCR is part of the Cambridge Assessment Group; Cambridge Assessment is the brand name of University of Cambridge Local Examinations Syndicate (UCLES), which is itself a department of the University of Cambridge.