

Write your name here

Surname

Other names

Pearson
Edexcel GCE

Centre Number

--	--	--	--	--	--

Candidate Number

--	--	--	--	--	--

Music

Advanced Subsidiary

Unit 3: Developing Musical Understanding

Monday 22 May 2017 – Morning

Time: 2 hours plus 5 minutes reading time

(Candidates should be given the reading time at the start of the examination, after which the CD should be started.)

Paper Reference

6MU03/01

You must have:

CD, CD player and keyboard(s)

Skeleton Score Booklet for Questions 1, 2 and 4 (enclosed)

Total Marks

Instructions

- Use **black** ink or ball-point pen. You may use pencil for rough work on Question 5.
- **Fill in the boxes** at the top of this page with your name, centre number and candidate number.
- Answer **all** of Part A, **either** (a) or (b) from Part B, and **all** of Part C.
- Answer the questions in the spaces provided
– *there may be more space than you need.*

Information

- The total mark for this paper is 80.
- The marks for **each** question are shown in brackets
– *use this as a guide as to how much time to spend on each question.*
- The music for **Part A** will be played to you on a CD. When the announcement on the CD concludes Part A, you should then complete Parts B and C.
- The quality of your written communication will be assessed
– *you should take particular care with your spelling, punctuation and grammar, as well as the clarity of expression.*

Advice

- Read each question carefully before you start to answer it.
- Try to answer every question.
- Check your answers if you have time at the end.

Turn over ►

P47339A

©2017 Pearson Education Ltd.

1/1/1



Pearson

Some questions must be answered with a cross ☒. If you change your mind about an answer, put a line through the box ☒ and then mark your new answer with a cross ☒.

PART A: LISTENING

Answer both questions.

The music for both questions in Part A will be played to you **five** times.
The playings will be separated by pauses, and the length of each pause will be announced.
Skeleton scores of the music can be found in the skeleton score booklet.

1 INSTRUMENTAL MUSIC

You will hear an excerpt from *Trio Sonata in D, Op.3 No.2. movement IV* by Corelli.
A skeleton score of this excerpt is provided in the skeleton score booklet.
Bar numbers in the questions relate to the skeleton score.

(a) Name the keyboard instrument playing in this excerpt. (1)

(b) Identify **three** points about the texture in bars 1 to 5. (3)

- 1
- 2
- 3

(c) Compare the violin parts in bars 1 to 2 with bars 20 to 21.
(i) Identify **one** similarity. (1)

(ii) Identify **two** differences. (2)

- 1
- 2

(d) Name the device heard in the violin parts throughout bars 15 to 17. (1)



(e) Name the key and cadence in bars 18 to 19.

(2)

Key

Cadence

(f) Identify **one** feature of the rhythm in bars 26 to 27.

(1)

(g) Identify **two** points about the harmony in the excerpt.

(2)

1

2

(h) At bar 23, the music is in D major.

Identify the **two** keys to which the music modulates between bars 26 and 32.

(2)

1

2

(i) Put a cross in the box next to the term which describes the structure of this movement.

(1)

- A** binary form
- B** rondo form
- C** sonata form
- D** ternary form

(Total for Question 1 = 16 marks)



2 VOCAL MUSIC

You will hear an excerpt from *My mother bids me bind my hair* by Haydn. A skeleton score of this excerpt is provided in the skeleton score booklet. Bar numbers in the questions relate to the skeleton score.

(a) Put a cross in the box next to the term below that describes the texture of this piece. (1)

- A** contrapuntal
- B** heterophonic
- C** homophonic
- D** monophonic

(b) Describe the melodic phrasing in bars 1 to 8. (1)

(c) Name the ornament heard in bar 7 on the syllable *bo* (of the word *bodice*). (1)

(d) (i) Name the key at bar 13. (1)

(ii) Using Roman numerals, identify the chords at *bodice blue* in bars 12 to 13 (3)

Words	bo	dice	blue
Chords			



(e) Describe the melody of the following passages.

(i) For why, she cries, sit still and weep (bar 14 last quaver to bar 16 fifth quaver)

(2)

(ii) While others dance and play (bar 16 last quaver to bar 18)

(2)

(f) Give **two** points about the use of the piano in this excerpt.

(2)

1

2

(g) Identify **two** musical features which suggest this piece was intended for amateur musicians.

(2)

1

2

(h) Put a cross in the box next to the term which describes the form of this song.

(1)

- A** binary form
- B** strophic
- C** through-composed
- D** verse and chorus

(Total for Question 2 = 16 marks)

TOTAL FOR PART A = 32 MARKS



PART B: INVESTIGATING MUSICAL STYLES

You must answer EITHER (a) INSTRUMENTAL MUSIC OR (b) VOCAL MUSIC.

You must answer both part (i) and part (ii) of the question you choose.

EITHER

3 (a) INSTRUMENTAL MUSIC

- (i) Describe the stylistic features of *Septet in E flat, Op.20: movement I* by Beethoven which show that this music was composed in the late Classical period. (10)
- (ii) Compare and contrast the melody and rhythm (including metre) of *Harold in Italy: movement III* by Berlioz and *Kinderscenen, Op.15: Nos.1, 3 and 11* by Schumann. (18)

OR

(b) VOCAL MUSIC

- (i) Describe the stylistic features of *A Day in the Life* by The Beatles which show that this song is an example of 1960s pop music. (10)
- (ii) Compare and contrast the melody and structure of *Sing we at pleasure* by Weelkes and *Honey don't* by Carl Perkins. (18)

DO NOT WRITE IN THIS AREA

DO NOT WRITE IN THIS AREA

DO NOT WRITE IN THIS AREA



DO NOT WRITE IN THIS AREA

DO NOT WRITE IN THIS AREA

DO NOT WRITE IN THIS AREA

Indicate which question you are answering by marking a cross in the box ☒. If you change your mind, put a line through the box ☒ and then indicate your new question with a cross ☒.

Chosen question number: Question 3(a) ☒ Question 3(b) ☒

Area containing horizontal dotted lines for writing answers.



DO NOT WRITE IN THIS AREA

DO NOT WRITE IN THIS AREA

DO NOT WRITE IN THIS AREA

Handwriting practice area with 20 horizontal dotted lines.



DO NOT WRITE IN THIS AREA

DO NOT WRITE IN THIS AREA

DO NOT WRITE IN THIS AREA

Handwriting practice area with 20 sets of horizontal dotted lines.



DO NOT WRITE IN THIS AREA

DO NOT WRITE IN THIS AREA

DO NOT WRITE IN THIS AREA

(Total for Question 3 = 28 marks)

TOTAL FOR PART B = 28 MARKS



DO NOT WRITE IN THIS AREA

DO NOT WRITE IN THIS AREA

DO NOT WRITE IN THIS AREA

BLANK PAGE



PART C: UNDERSTANDING CHORDS AND LINES

Answer both questions.

4 Study the printed music for this question in the skeleton score booklet and answer all the questions that follow.

(a) Complete the table below to give a harmonic analysis of bars 5 to 7. Precisely indicate, using Roman numerals, the chords that are used.

(3)

Bar 5, beats 3 and 4	I
Bar 6, beats 1 and 2	
Bar 6, beat 3 and 4	
Bar 7, beat 1	

(b) Identify the musical device in the bass at bar 8 to bar 11.

(1)

(c) Using Roman numerals, precisely identify the chord used at bar 14 (beat 1).

(1)

(d) Name the melodic device in the melody at bar 15 (beat 2) to bar 17 (beat 2).

(1)

(e) Name the key at bar 18 to 19.

(1)

DO NOT WRITE IN THIS AREA

DO NOT WRITE IN THIS AREA

DO NOT WRITE IN THIS AREA



- (f) Complete the sentence below by putting a cross in the box next to the correct answer.

The bracketed note A in the vocal part in bar 10 is best described as:

(1)

- A** an anticipation
- B** an appoggiatura
- C** a passing note
- D** a suspension

(Total for Question 4 = 8 marks)



- 5 Complete the music below for SATB voices in short score choosing suitable chords. Some credit will be given for the appropriate use of non-harmonic notes. Some space for rough work is given opposite but you must write your answer on the score.

(12)

(Total for Question 5 = 12 marks)

TOTAL FOR PART C = 20 MARKS
TOTAL FOR PAPER = 80 MARKS

DO NOT WRITE IN THIS AREA

DO NOT WRITE IN THIS AREA

DO NOT WRITE IN THIS AREA

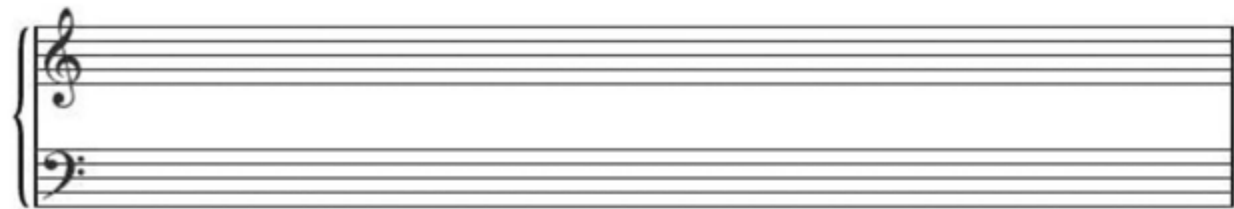
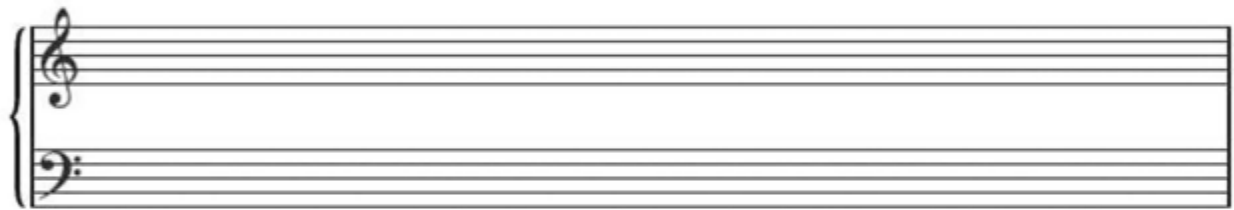
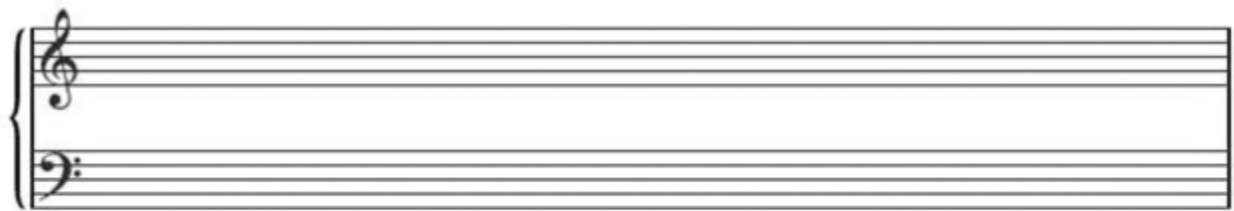
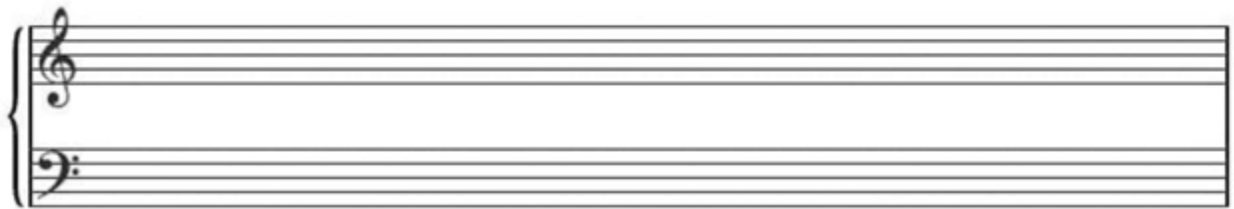


DO NOT WRITE IN THIS AREA

DO NOT WRITE IN THIS AREA

DO NOT WRITE IN THIS AREA

Rough work



P 4 7 3 3 9 A 0 1 5 1 6

DO NOT WRITE IN THIS AREA

DO NOT WRITE IN THIS AREA

DO NOT WRITE IN THIS AREA

BLANK PAGE



Pearson Edexcel GCE

Music

Advanced Subsidiary

Unit 3: Developing Musical Understanding

Monday 22 May 2017 – Morning

Paper Reference

6MU03/01

Skeleton Score Booklet for Questions 1, 2 and 4

Turn over ►

P47339A

©2017 Pearson Education Ltd.

1/1/1




Pearson

PART A: LISTENING

Question 1

Trio Sonata in D, Op.3 no.2: movement IV by Corelli

(b) texture



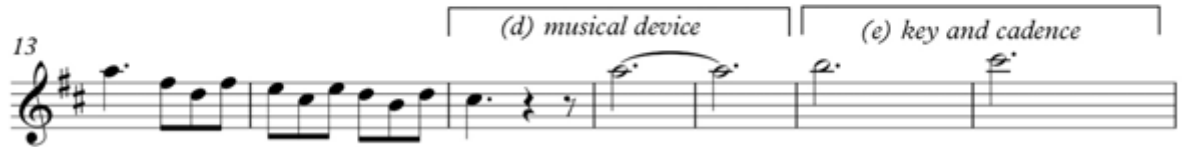
6



13

(d) musical device

(e) key and cadence



20

(c) compare with bars 1 to 2



(h) keys bars 26 to 32

26

(f) rhythm



30



Question 2

My mother bids me bind my hair by Haydn

(b) phrasing

Allegretto

My mother bids me bind my hair with bands of rosy hue, tie

(c) ornament

5

up my sleeves with ribbands rare and lace my bodice blue tie up my

(d)(i) key
(d)(ii) chords

10

sleeves with ribbands rare and lace, and lace my bodice blue! For

(e) melody

15

why, she cries, sit still and weep, while others dance and play? *(piano)*

PART C: UNDERSTANDING CHORDS AND LINES

Question 4

Moderato

On spread - ing - wings ma - jes - tic - soars The

5

ea - gle a - loft, the ea - gle a - loft, and cleaves the air, In

(a) chords

10

swift - est, in - swift - est flight, to the blaz - ing

(b) musical device

2

13

(c) chord

sun, to the blaz - ing sun.

16

(d) melodic device

(e) key

BLANK PAGE

BLANK PAGE

BLANK PAGE