

Please check the examination details below before entering your candidate information

Candidate surname

Other names

**Pearson Edexcel
Level 3 GCE**

Centre Number

--	--	--	--	--

Candidate Number

--	--	--	--	--

Friday 12 June 2020

Morning (Time: 2 hours)

Paper Reference **9MU0/03**

**Music
Advanced
Component 3: Appraising**

You must have:

Resource booklet (enclosed)
CD and individual CD player

Total Marks

Instructions

- Use **black** ink or ball-point pen.
- **Fill in the boxes** at the top of this page with your name, centre number and candidate number.
- Answer **all** questions in Section A, in Section B answer question 5 and either question 6(a), **or** 6(b) **or** 6(c).
- Answer the questions in the spaces provided
– *there may be more space than you need.*

Information

- The total mark for this paper is 100.
- The marks for **each** question are shown in brackets
– *use this as a guide as to how much time to spend on each question.*

Advice

- Read each question carefully before you start to answer it.
- Check your answers if you have time at the end.
- You may listen to excerpts as many times as you wish.
- You are reminded of the importance of clear and orderly presentation in your answers.

Turn over ►

P62549A

©2020 Pearson Education Ltd.

1/1/1/



Pearson

SECTION A

Answer ALL questions. Write your answers in the spaces provided.

Some questions must be answered with a cross in a box ☒. If you change your mind about an answer, put a line through the box ☒ and then mark your new answer with a cross ☒.

1 Danny Elfman, *Batman Returns: Birth of a Penguin Part I*

Listen to Track 1 of the CD and refer to Excerpt 1 in the resource booklet.

(a) Describe **three** musical features in bars 1 to 2 which create suspense. (3)

.....

.....

.....

(b) Name the melodic interval from the last beat of bar 1 to the first beat of bar 2. (1)

.....

(c) (i) Name the instrument which enters at bar 8. (1)

.....

(ii) Name the instrument which enters halfway through bar 11. (1)

.....

(d) (i) Identify the texture from bar 22 to 25. (1)

.....

(ii) Describe the texture from bar 26 to 31. (2)

.....

.....

.....

DO NOT WRITE IN THIS AREA

DO NOT WRITE IN THIS AREA

DO NOT WRITE IN THIS AREA



(e) Describe the use of tonality in this excerpt.

(3)

.....

.....

.....

.....

(Total for Question 1 = 12 marks)

DO NOT WRITE IN THIS AREA

DO NOT WRITE IN THIS AREA

DO NOT WRITE IN THIS AREA



2 Berlioz, *Symphonie Fantastique*: Movement I

Listen to Track 2 of the CD and refer to Excerpt 2 in the resource booklet.

(a) (i) Name the overall structure of this movement. (1)

.....

(ii) Name the section within this structure which starts at bar 1. (1)

.....

(b) Identify the instrument doubling the violin I melody in this excerpt. (1)

.....

(c) Describe the melody in bars 1 to 8. (3)

.....

.....

.....

(d) Compare the melody in bars 9 to 15 with bars 1 to 8. (3)

.....

.....

.....

(e) Name the **two** melodic intervals. (2)

Bar 33

Bar 35



(f) Describe the texture of this excerpt.

(3)

.....

.....

.....

.....

(g) Identify the year when this piece was composed.

(1)

- A 1810
- B 1830
- C 1850
- D 1870

(Total for Question 2 = 15 marks)



3 Anoushka Shankar, *Breathing Under Water: Burn*

Listen to Track 3 of the CD and refer to Excerpt 3 in the resource booklet.

(a) (i) Name the melody instrument which plays in bar 1.

(1)

(ii) Describe the melody in bars 1 to 2.

(3)

(b) Describe the melody in bars 9 to 12.

(4)

(c) Identify the section which starts at bar 17.

(1)

(d) Identify **two** features from the list below that describe the harmony in this excerpt.

(2)

- A** Circle of fifths
- B** Diminished 7th chords
- C** Dominant pedal
- D** False relation
- E** Imperfect cadence
- F** Lack of cadences
- G** Static harmony



DO NOT WRITE IN THIS AREA

DO NOT WRITE IN THIS AREA

DO NOT WRITE IN THIS AREA

(e) Name the instrument which enters at bar 25.

(1)

(f) Describe the popular music features which make this piece an example of fusion.

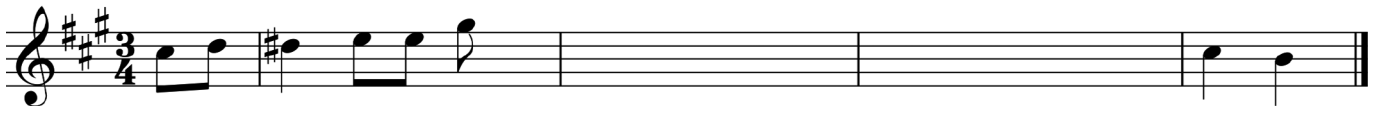
(3)

(Total for Question 3 = 15 marks)



4 Listen to Track 4 of the CD.

Complete the melody in bars 1 to 3.



(Total for Question 4 = 8 marks)

TOTAL FOR SECTION A = 50 MARKS

DO NOT WRITE IN THIS AREA

DO NOT WRITE IN THIS AREA

DO NOT WRITE IN THIS AREA



DO NOT WRITE IN THIS AREA

DO NOT WRITE IN THIS AREA

DO NOT WRITE IN THIS AREA

SECTION B

Write your answers in the spaces provided.

5 Vocal Music

Listen to Track 5 of the CD.

This music is a setting of the words “Kyrie eleison” which mean “Lord have mercy”. It is the opening of a large-scale piece composed in the early Romantic period. The composer intended this music to have a direct emotional impact on listeners. He wrote, “From the heart – may it return to the heart!”

Discuss how the composer achieves this intention, giving musical reasons for your answer. Relate your discussion to other relevant works. These may include set works, wider listening or other music.

(20)



DO NOT WRITE IN THIS AREA

DO NOT WRITE IN THIS AREA

DO NOT WRITE IN THIS AREA

Handwriting practice area with 20 horizontal dotted lines.



DO NOT WRITE IN THIS AREA

DO NOT WRITE IN THIS AREA

DO NOT WRITE IN THIS AREA

Handwriting practice area with 20 horizontal dotted lines.



DO NOT WRITE IN THIS AREA

DO NOT WRITE IN THIS AREA

DO NOT WRITE IN THIS AREA

Handwriting practice area with 25 horizontal dotted lines.



DO NOT WRITE IN THIS AREA

DO NOT WRITE IN THIS AREA

DO NOT WRITE IN THIS AREA

(Total for Question 5 = 20 marks)



P 6 2 5 4 9 A 0 1 3 2 4

You must answer either (a) **VOCAL MUSIC** or (b) **POPULAR MUSIC AND JAZZ** or (c) **NEW DIRECTIONS**

EITHER

6 (a) VOCAL MUSIC

Discuss Mozart's use of harmony, tonality and texture in *The Magic Flute*, Act I No. 5 (Quintet).

Relate your discussion to other relevant works. These may include set works, wider listening or other music.

(30)

OR

6 (b) POPULAR MUSIC AND JAZZ

Discuss Courtney Pine's use of melody, structure and sonority in *Back in the Day: Inner State* (of Mind).

Relate your discussion to other relevant works. These may include set works, wider listening or other music.

(30)

OR

6 (c) NEW DIRECTIONS

Discuss Stravinsky's use of melody, rhythm (including tempo and metre) and sonority in *The Rite of Spring: Ritual of Abduction*.

Relate your discussion to other relevant works. These may include set works, wider listening or other music.

(30)

DO NOT WRITE IN THIS AREA

DO NOT WRITE IN THIS AREA

DO NOT WRITE IN THIS AREA



DO NOT WRITE IN THIS AREA

DO NOT WRITE IN THIS AREA

DO NOT WRITE IN THIS AREA

Indicate which question you are answering by marking a cross in the box ☒. If you change your mind, put a line through the box ☒ and then mark your new answer with a cross ☒.

If you answer part (a) put a cross in the box ☒ .

If you answer part (b) put a cross in the box ☒ .

If you answer part (c) put a cross in the box ☒ .

Area with horizontal dotted lines for writing answers.



DO NOT WRITE IN THIS AREA

DO NOT WRITE IN THIS AREA

DO NOT WRITE IN THIS AREA

Handwriting practice area with 25 horizontal dotted lines.



DO NOT WRITE IN THIS AREA

DO NOT WRITE IN THIS AREA

DO NOT WRITE IN THIS AREA

Handwriting practice area with 20 horizontal dotted lines.



P 6 2 5 4 9 A 0 1 7 2 4

DO NOT WRITE IN THIS AREA

DO NOT WRITE IN THIS AREA

DO NOT WRITE IN THIS AREA

Handwriting practice area with 20 horizontal dotted lines.



DO NOT WRITE IN THIS AREA

DO NOT WRITE IN THIS AREA

DO NOT WRITE IN THIS AREA

Handwriting practice area with 20 horizontal dotted lines.



DO NOT WRITE IN THIS AREA

DO NOT WRITE IN THIS AREA

DO NOT WRITE IN THIS AREA

Handwriting practice area with 20 horizontal dotted lines.



DO NOT WRITE IN THIS AREA

DO NOT WRITE IN THIS AREA

DO NOT WRITE IN THIS AREA

(Total for Question 6 = 30 marks)

TOTAL FOR SECTION B = 50 MARKS
TOTAL FOR PAPER = 100 MARKS



P 6 2 5 4 9 A 0 2 1 2 4

DO NOT WRITE IN THIS AREA

DO NOT WRITE IN THIS AREA

DO NOT WRITE IN THIS AREA

BLANK PAGE



DO NOT WRITE IN THIS AREA

DO NOT WRITE IN THIS AREA

DO NOT WRITE IN THIS AREA

BLANK PAGE



DO NOT WRITE IN THIS AREA

DO NOT WRITE IN THIS AREA

DO NOT WRITE IN THIS AREA

BLANK PAGE

