

**ADVANCED SUBSIDIARY GCE  
MATHEMATICS (MEI)**

**4752/01**

Concepts for Advanced Mathematics (C2)

**WEDNESDAY 9 JANUARY 2008**

Afternoon

Time: 1 hour 30 minutes

**Additional materials:** Answer Booklet (8 pages)  
MEI Examination Formulae and Tables (MF2)

**INSTRUCTIONS TO CANDIDATES**

- Write your name, centre number and candidate number in the spaces provided on the answer booklet.
- Read each question carefully and make sure you know what you have to do before starting your answer.
- Answer **all** the questions.
- You are permitted to use a graphical calculator in this paper.
- Final answers should be given to a degree of accuracy appropriate to the context.

**INFORMATION FOR CANDIDATES**

- The number of marks is given in brackets [ ] at the end of each question or part question.
- The total number of marks for this paper is 72.
- You are advised that an answer may receive **no marks** unless you show sufficient detail of the working to indicate that a correct method is being used.

This document consists of **6** printed pages and **2** blank pages.

## Section A (36 marks)

1 Differentiate  $10x^4 + 12$ . [2]

2 A sequence begins

1 2 3 4 5 1 2 3 4 5 1 ...

and continues in this pattern.

(i) Find the 48th term of this sequence. [1]

(ii) Find the sum of the first 48 terms of this sequence. [2]

3 You are given that  $\tan \theta = \frac{1}{2}$  and the angle  $\theta$  is acute. Show, without using a calculator, that  $\cos^2 \theta = \frac{4}{5}$ . [3]

4

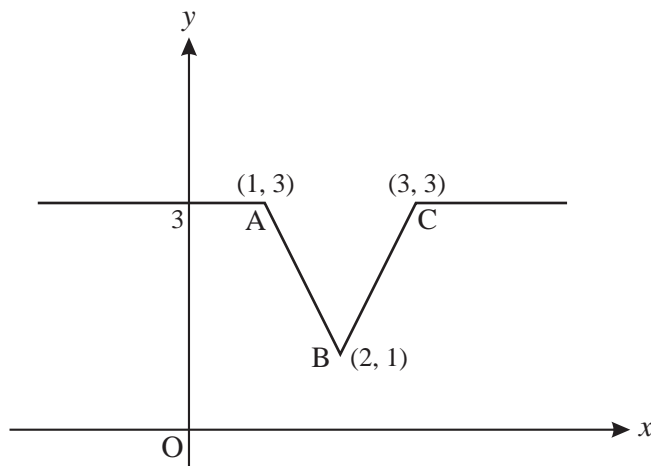


Fig. 4

Fig. 4 shows a sketch of the graph of  $y = f(x)$ . On separate diagrams, sketch the graphs of the following, showing clearly the coordinates of the points corresponding to A, B and C.

(i)  $y = 2f(x)$  [2]

(ii)  $y = f(x + 3)$  [2]

5 Find  $\int (12x^5 + \sqrt[3]{x} + 7) dx$ . [5]

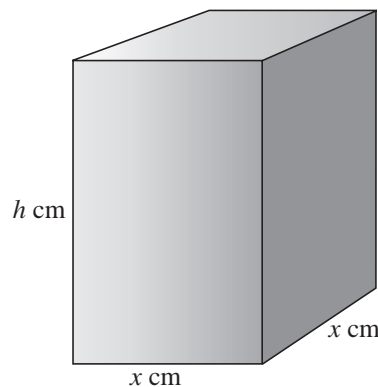
6 (i) Sketch the graph of  $y = \sin \theta$  for  $0 \leq \theta \leq 2\pi$ . [2]

(ii) Solve the equation  $2 \sin \theta = -1$  for  $0 \leq \theta \leq 2\pi$ . Give your answers in the form  $k\pi$ . [3]

- 7 (i) Find  $\sum_{k=2}^5 2^k$ . [2]
- (ii) Find the value of  $n$  for which  $2^n = \frac{1}{64}$ . [1]
- (iii) Sketch the curve with equation  $y = 2^x$ . [2]
- 8 The second term of a geometric progression is 18 and the fourth term is 2. The common ratio is positive. Find the sum to infinity of this progression. [5]
- 9 You are given that  $\log_{10} y = 3x + 2$ .
- (i) Find the value of  $x$  when  $y = 500$ , giving your answer correct to 2 decimal places. [1]
- (ii) Find the value of  $y$  when  $x = -1$ . [1]
- (iii) Express  $\log_{10}(y^4)$  in terms of  $x$ . [1]
- (iv) Find an expression for  $y$  in terms of  $x$ . [1]

**Section B (36 marks)**

10



**Fig. 10**

Fig. 10 shows a solid cuboid with square base of side  $x$  cm and height  $h$  cm. Its volume is  $120 \text{ cm}^3$ .

- (i) Find  $h$  in terms of  $x$ . Hence show that the surface area,  $A \text{ cm}^2$ , of the cuboid is given by  $A = 2x^2 + \frac{480}{x}$ . [3]
- (ii) Find  $\frac{dA}{dx}$  and  $\frac{d^2A}{dx^2}$ . [4]
- (iii) Hence find the value of  $x$  which gives the minimum surface area. Find also the value of the surface area in this case. [5]

- 11 (i) The course for a yacht race is a triangle, as shown in Fig. 11.1. The yachts start at A, then travel to B, then to C and finally back to A.

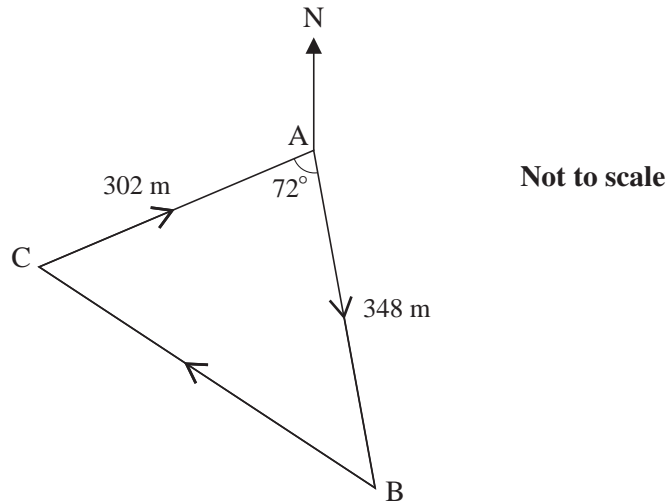


Fig. 11.1

- (A) Calculate the total length of the course for this race. [4]
- (B) Given that the bearing of the first stage, AB, is  $175^\circ$ , calculate the bearing of the second stage, BC. [4]
- (ii) Fig. 11.2 shows the course of another yacht race. The course follows the arc of a circle from P to Q, then a straight line back to P. The circle has radius 120 m and centre O; angle  $POQ = 136^\circ$ .

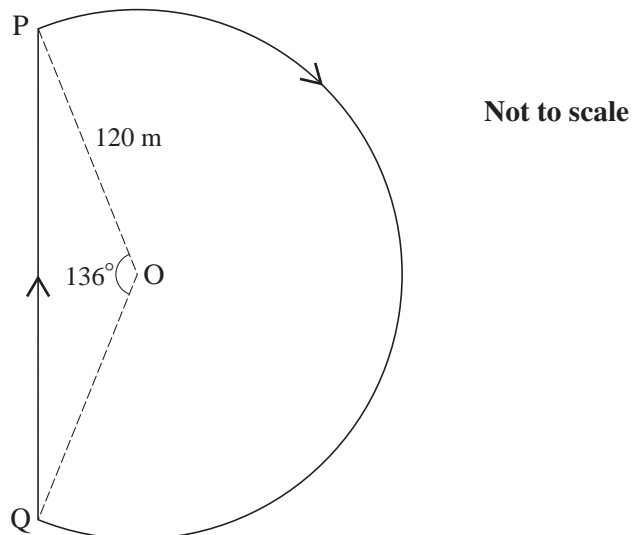


Fig. 11.2

Calculate the total length of the course for this race. [4]

12 (i)

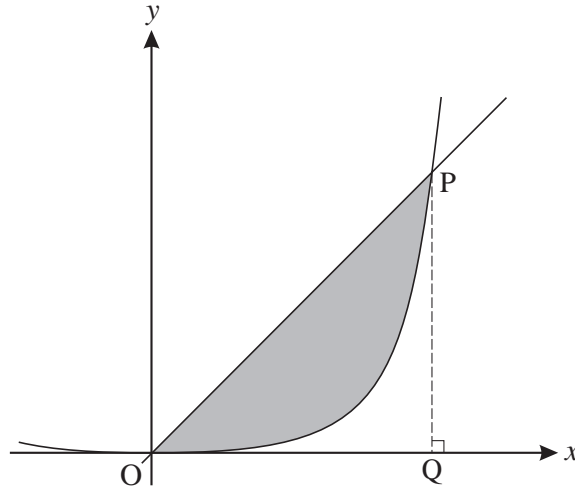


Fig. 12

Fig. 12 shows part of the curve  $y = x^4$  and the line  $y = 8x$ , which intersect at the origin and the point P.

(A) Find the coordinates of P, and show that the area of triangle OPQ is 16 square units. [3]

(B) Find the area of the region bounded by the line and the curve. [3]

(ii) You are given that  $f(x) = x^4$ .

(A) Complete this identity for  $f(x+h)$ .

$$f(x+h) = (x+h)^4 = x^4 + 4x^3h + \dots \quad [2]$$

(B) Simplify  $\frac{f(x+h) - f(x)}{h}$ . [2]

(C) Find  $\lim_{h \rightarrow 0} \frac{f(x+h) - f(x)}{h}$ . [1]

(D) State what this limit represents. [1]

**BLANK PAGE**

**BLANK PAGE**

---

Permission to reproduce items where third-party owned material protected by copyright is included has been sought and cleared where possible. Every reasonable effort has been made by the publisher (OCR) to trace copyright holders, but if any items requiring clearance have unwittingly been included, the publisher will be pleased to make amends at the earliest possible opportunity.

OCR is part of the Cambridge Assessment Group. Cambridge Assessment is the brand name of University of Cambridge Local Examinations Syndicate (UCLES), which is itself a department of the University of Cambridge.