

Please check the examination details below before entering your candidate information

Candidate surname

Other names

Centre Number

Candidate Number

--	--	--	--	--

--	--	--	--

Pearson Edexcel International Advanced Level

Time 1 hour 30 minutes

Paper
reference

WMA11/01

Mathematics

International Advanced Subsidiary/Advanced Level
Pure Mathematics P1

You must have:

Mathematical Formulae and Statistical Tables (Yellow), calculator

Total Marks

Candidates may use any calculator permitted by Pearson regulations. Calculators must not have the facility for symbolic algebra manipulation, differentiation and integration, or have retrievable mathematical formulae stored in them.

Instructions

- Use **black** ink or ball-point pen.
- If pencil is used for diagrams/sketches/graphs it must be dark (HB or B).
- **Fill in the boxes** at the top of this page with your name, centre number and candidate number.
- Answer **all** questions and ensure that your answers to parts of questions are clearly labelled.
- Answer the questions in the spaces provided
– *there may be more space than you need.*
- You should show sufficient working to make your methods clear. Answers without working may not gain full credit.
- Inexact answers should be given to three significant figures unless otherwise stated.

Information

- A booklet 'Mathematical Formulae and Statistical Tables' is provided.
- There are 10 questions in this question paper. The total mark for this paper is 75.
- The marks for **each** question are shown in brackets
– *use this as a guide as to how much time to spend on each question.*

Advice

- Read each question carefully before you start to answer it.
- Try to answer every question.
- Check your answers if you have time at the end.

Turn over ►

P70482A

©2022 Pearson Education Ltd.

L:1/1/1/1/



Pearson

7.

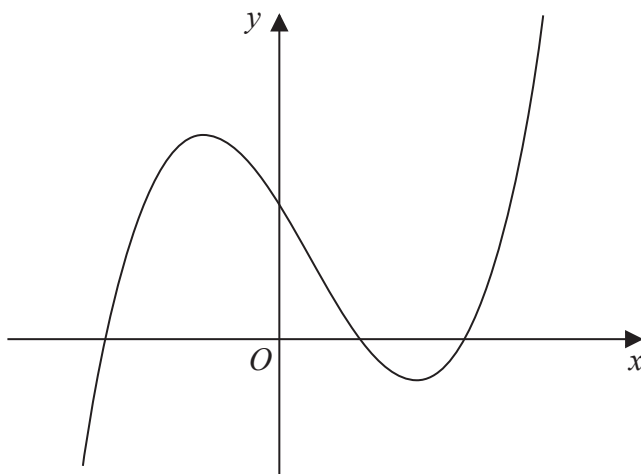


Figure 3

Figure 3 shows a sketch of part of the curve with equation $y = f(x)$, where

$$f(x) = (x + 4)(x - 2)(2x - 9)$$

Given that the curve with equation $y = f(x) - p$ passes through the point with coordinates $(0, 50)$

- (a) find the value of the constant p . (2)

Given that the curve with equation $y = f(x + q)$ passes through the origin,

- (b) write down the possible values of the constant q . (2)

- (c) Find $f'(x)$. (4)

- (d) Hence find the range of values of x for which the gradient of the curve with equation $y = f(x)$ is less than -18 (3)

DO NOT WRITE IN THIS AREA

DO NOT WRITE IN THIS AREA

DO NOT WRITE IN THIS AREA



10. The curve C has equation

$$y = \frac{1}{x^2} - 9$$

(a) Sketch the graph of C .

On your sketch

- show the coordinates of any points of intersection with the coordinate axes
- state clearly the equations of any asymptotes

(4)

The curve D has equation $y = kx^2$ where k is a constant.

Given that C meets D at 4 distinct points,

(b) find the range of possible values for k .

(5)

DO NOT WRITE IN THIS AREA

DO NOT WRITE IN THIS AREA

DO NOT WRITE IN THIS AREA



