

Please check the examination details below before entering your candidate information

Candidate surname

Other names

Pearson Edexcel
International
Advanced Level

Centre Number

--	--	--	--	--

Candidate Number

--	--	--	--	--

Thursday 14 January 2021

Morning (Time: 1 hour 30 minutes)

Paper Reference **WMA13/01**

Mathematics
International Advanced Level
Pure Mathematics P3

You must have:

Mathematical Formulae and Statistical Tables (Lilac), calculator

Total Marks

--

Candidates may use any calculator permitted by Pearson regulations. Calculators must not have the facility for symbolic algebra manipulation, differentiation and integration, or have retrievable mathematical formulae stored in them.

Instructions

- Use **black** ink or ball-point pen.
- If pencil is used for diagrams/sketches/graphs it must be dark (HB or B).
- **Fill in the boxes** at the top of this page with your name, centre number and candidate number.
- Answer **all** questions and ensure that your answers to parts of questions are clearly labelled.
- Answer the questions in the spaces provided
– *there may be more space than you need.*
- You should show sufficient working to make your methods clear. Answers without working may not gain full credit.
- Inexact answers should be given to three significant figures unless otherwise stated.

Information

- A booklet 'Mathematical Formulae and Statistical Tables' is provided.
- There are 10 questions in this question paper. The total mark for this paper is 75.
- The marks for **each** question are shown in brackets
– *use this as a guide as to how much time to spend on each question.*

Advice

- Read each question carefully before you start to answer it.
- Try to answer every question.
- Check your answers if you have time at the end.
- If you change your mind about an answer, cross it out and put your new answer and any working underneath.

Turn over ►

P66389A

©2021 Pearson Education Ltd.

1/1/1/




Pearson

1. Find

$$\int \frac{x^2 - 5}{2x^3} dx \quad x > 0$$

giving your answer in simplest form.

(3)

DO NOT WRITE IN THIS AREA

DO NOT WRITE IN THIS AREA

DO NOT WRITE IN THIS AREA



Question 1 continued

Lined writing area for the answer to Question 1.

DO NOT WRITE IN THIS AREA

DO NOT WRITE IN THIS AREA

DO NOT WRITE IN THIS AREA

Q1

(Total 3 marks)



P 6 6 3 8 9 A 0 3 3 2

2.

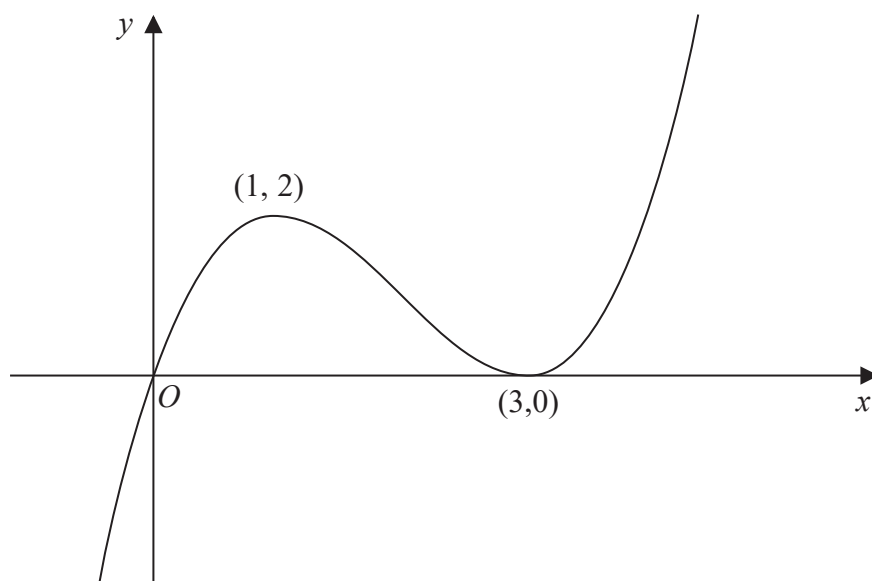


Figure 1

Figure 1 shows a sketch of the curve with equation $y = f(x)$, where $x \in \mathbb{R}$ and $f(x)$ is a polynomial.

The curve passes through the origin and touches the x -axis at the point $(3, 0)$

There is a maximum turning point at $(1, 2)$ and a minimum turning point at $(3, 0)$

On separate diagrams, sketch the curve with equation

(i) $y = 3f(2x)$ **(3)**

(ii) $y = f(-x) - 1$ **(3)**

On each sketch, show clearly the coordinates of

- the point where the curve crosses the y -axis
- any maximum or minimum turning points

DO NOT WRITE IN THIS AREA

DO NOT WRITE IN THIS AREA

DO NOT WRITE IN THIS AREA



Leave
blank

Question 2 continued

DO NOT WRITE IN THIS AREA

DO NOT WRITE IN THIS AREA

DO NOT WRITE IN THIS AREA

Q2

(Total 6 marks)



3.

$$f(x) = 3 - \frac{x - 2}{x + 1} + \frac{5x + 26}{2x^2 - 3x - 5} \quad x > 4$$

(a) Show that

$$f(x) = \frac{ax + b}{cx + d} \quad x > 4$$

where a, b, c and d are integers to be found.

(4)

(b) Hence find $f^{-1}(x)$

(2)

(c) Find the domain of f^{-1}

(2)

DO NOT WRITE IN THIS AREA

DO NOT WRITE IN THIS AREA

DO NOT WRITE IN THIS AREA



DO NOT WRITE IN THIS AREA

DO NOT WRITE IN THIS AREA

DO NOT WRITE IN THIS AREA

Leave
blank

Question 3 continued

Lined writing area for question response.

(Total 8 marks)

Q3



4.

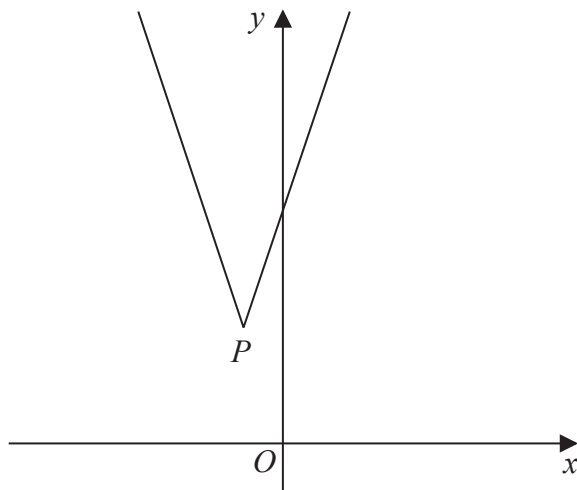


Figure 2

Figure 2 shows a sketch of the graph with equation $y = f(x)$, where

$$f(x) = |3x + a| + a$$

and where a is a positive constant.

The graph has a vertex at the point P , as shown in Figure 2.

(a) Find, in terms of a , the coordinates of P . (2)

(b) Sketch the graph with equation $y = g(x)$, where

$$g(x) = |x + 5a|$$

On your sketch, show the coordinates, in terms of a , of each point where the graph cuts or meets the coordinate axes. (2)

The graph with equation $y = g(x)$ intersects the graph with equation $y = f(x)$ at two points.

(c) Find, in terms of a , the coordinates of the two points. (5)

DO NOT WRITE IN THIS AREA

DO NOT WRITE IN THIS AREA

DO NOT WRITE IN THIS AREA



5. The temperature, $\theta^\circ\text{C}$, inside an oven, t minutes after the oven is switched on, is given by

$$\theta = A - 180e^{-kt}$$

where A and k are positive constants.

Given that the temperature inside the oven is initially 18°C ,

(a) find the value of A . (2)

The temperature inside the oven, 5 minutes after the oven is switched on, is 90°C .

(b) Show that $k = p \ln q$ where p and q are rational numbers to be found. (4)

Hence find

(c) the temperature inside the oven 9 minutes after the oven is switched on, giving your answer to 3 significant figures, (2)

(d) the rate of increase of the temperature inside the oven 9 minutes after the oven is switched on. Give your answer in $^\circ\text{C min}^{-1}$ to 3 significant figures. (3)



Question 5 continued

Lined writing area for the answer to Question 5.

DO NOT WRITE IN THIS AREA



Leave blank

Question 5 continued

A series of horizontal lines for writing the answer to Question 5.

DO NOT WRITE IN THIS AREA

DO NOT WRITE IN THIS AREA

DO NOT WRITE IN THIS AREA



6.

$$f(x) = x \cos\left(\frac{x}{3}\right) \quad x > 0$$

(a) Find $f'(x)$ **(2)**

(b) Show that the equation $f'(x) = 0$ can be written as

$$x = k \arctan\left(\frac{k}{x}\right)$$

where k is an integer to be found. **(2)**

(c) Starting with $x_1 = 2.5$ use the iteration formula

$$x_{n+1} = k \arctan\left(\frac{k}{x_n}\right)$$

with the value of k found in part (b), to calculate the values of x_2 and x_6 giving your answers to 3 decimal places. **(2)**

(d) Using a suitable interval and a suitable function that should be stated, show that a root of $f'(x) = 0$ is 2.581 correct to 3 decimal places. **(2)**

DO NOT WRITE IN THIS AREA

DO NOT WRITE IN THIS AREA

DO NOT WRITE IN THIS AREA

Leave
blank

Question 7 continued

DO NOT WRITE IN THIS AREA

DO NOT WRITE IN THIS AREA

DO NOT WRITE IN THIS AREA



8. The percentage, P , of the population of a small country who have access to the internet, is modelled by the equation

$$P = ab^t$$

where a and b are constants and t is the number of years after the start of 2005

Using the data for the years between the start of 2005 and the start of 2010, a graph is plotted of $\log_{10} P$ against t .

The points are found to lie approximately on a straight line with gradient 0.09 and intercept 0.68 on the $\log_{10} P$ axis.

- (a) Find, according to the model, the value of a and the value of b , giving your answers to 2 decimal places. (4)

- (b) In the context of the model, give a practical interpretation of the constant a . (1)

- (c) Use the model to estimate the percentage of the population who had access to the internet at the start of 2015 (2)

DO NOT WRITE IN THIS AREA

DO NOT WRITE IN THIS AREA

DO NOT WRITE IN THIS AREA



9. Find

$$(i) \int \frac{3x - 2}{3x^2 - 4x + 5} dx \quad (2)$$

$$(ii) \int \frac{e^{2x}}{(e^{2x} - 1)^3} dx \quad x \neq 0 \quad (2)$$

DO NOT WRITE IN THIS AREA

DO NOT WRITE IN THIS AREA

DO NOT WRITE IN THIS AREA



10. The curve C has equation

$$x = 3\sec^2 2y \quad x > 3 \quad 0 < y < \frac{\pi}{4}$$

(a) Find $\frac{dx}{dy}$ in terms of y .

(2)

(b) Hence show that

$$\frac{dy}{dx} = \frac{p}{qx\sqrt{x-3}}$$

where p is irrational and q is an integer, stating the values of p and q .

(3)

(c) Find the equation of the normal to C at the point where $y = \frac{\pi}{12}$, giving your answer in the form $y = mx + c$, giving m and c as exact irrational numbers.

(5)

DO NOT WRITE IN THIS AREA

DO NOT WRITE IN THIS AREA

DO NOT WRITE IN THIS AREA



Leave blank

Question 10 continued

Lined area for writing the answer to Question 10.

Q10

(Total 10 marks)

TOTAL FOR PAPER IS 75 MARKS

END

DO NOT WRITE IN THIS AREA

DO NOT WRITE IN THIS AREA

DO NOT WRITE IN THIS AREA

