







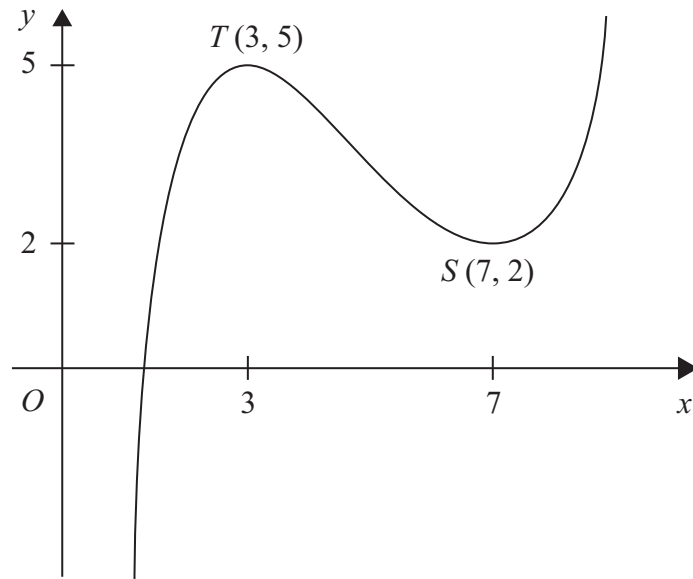








3.



**Figure 1**

Figure 1 shows the graph of  $y = f(x)$ ,  $1 < x < 9$ .  
The points  $T(3, 5)$  and  $S(7, 2)$  are turning points on the graph.

Sketch, on separate diagrams, the graphs of

(a)  $y = 2f(x) - 4$ ,

**(3)**

(b)  $y = |f(x)|$ .

**(3)**

Indicate on each diagram the coordinates of any turning points on your sketch.





**Question 3 continued**

Leave  
blank

**(Total 6 marks)**

**Q3**

9

**Turn over**











































**BLANK PAGE**

