



GCSE

4321/02

HUMANITIES

UNIT 1: Patterns and Places

P.M. MONDAY, 8 June 2015

1 hour plus your additional time allowance

Surname _____

Other Names _____

Centre Number _____

Candidate Number 0 _____

For Examiner's use only			
	Question	Maximum Mark	Mark Awarded
Section A	1.	30	
Section B	2. or 3.	20	
	Total	50	

INSTRUCTIONS TO CANDIDATES

Use black ink, black ball-point pen or your usual method.

Write your name, centre number and candidate number in the spaces provided on the front cover.

Answer Question 1 (Section A) AND EITHER Question 2 OR Question 3 (Section B).

Write your answers in the spaces provided in this booklet. Use supplementary sheets when there is insufficient room in this booklet. Write your name at the top of each supplementary sheet, indicating clearly the number of the question you answer. Put the supplementary sheets inside this booklet.

INFORMATION FOR CANDIDATES

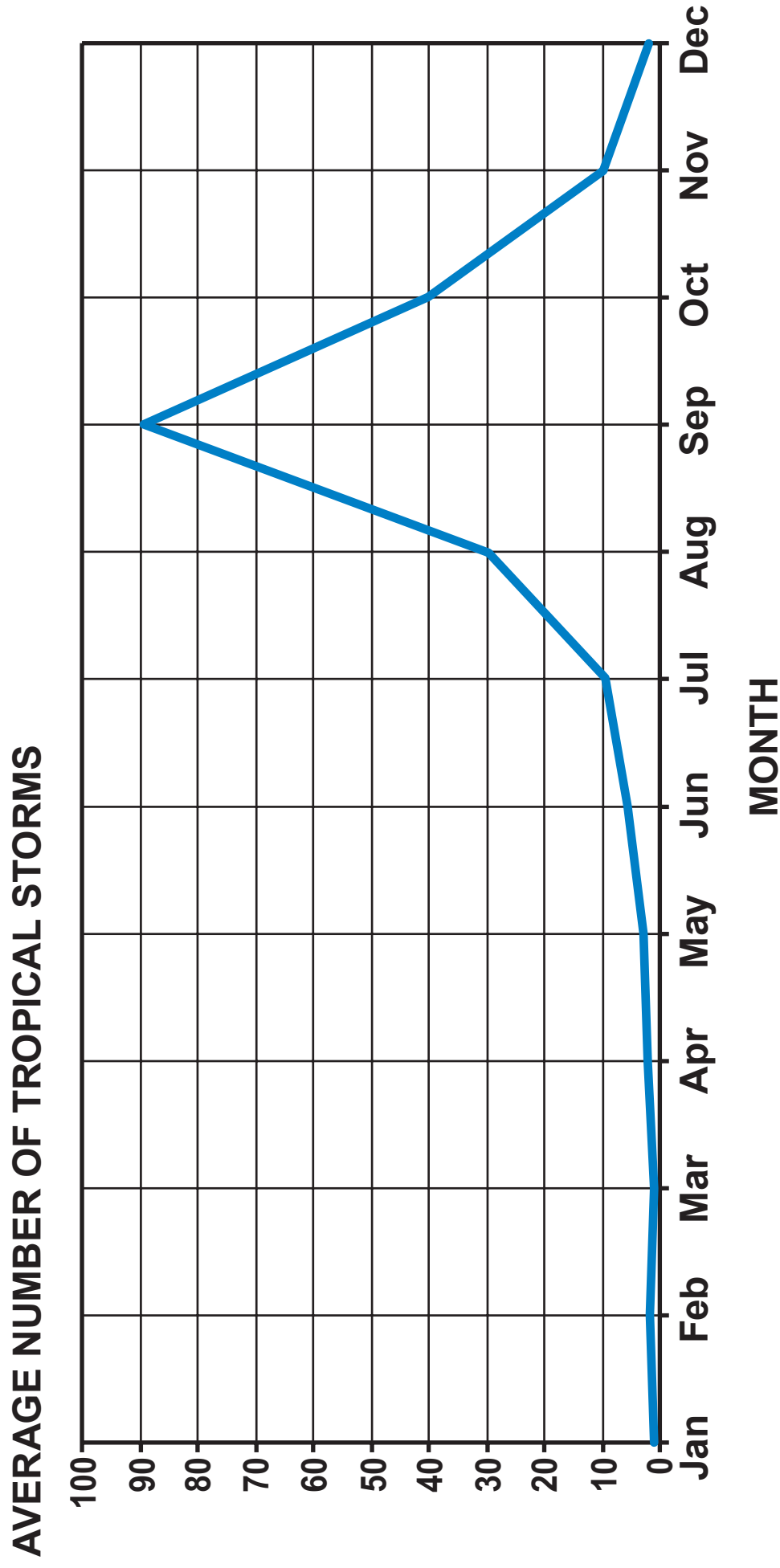
The number of marks is given in brackets at the end of each question or part-question.

You will be awarded marks for the quality of your written communication.

Your answers must be relevant and must make full use of the information given to be awarded full marks for a question.

You are reminded that you should always support your answers using your knowledge and understanding of the topic chosen.

Source A – A graph showing the average number of tropical storm events throughout the year.



PATTERNS AND PLACES

Answer Question 1 (Section A) AND EITHER Question 2 OR Question 3 (Section B).

SECTION A

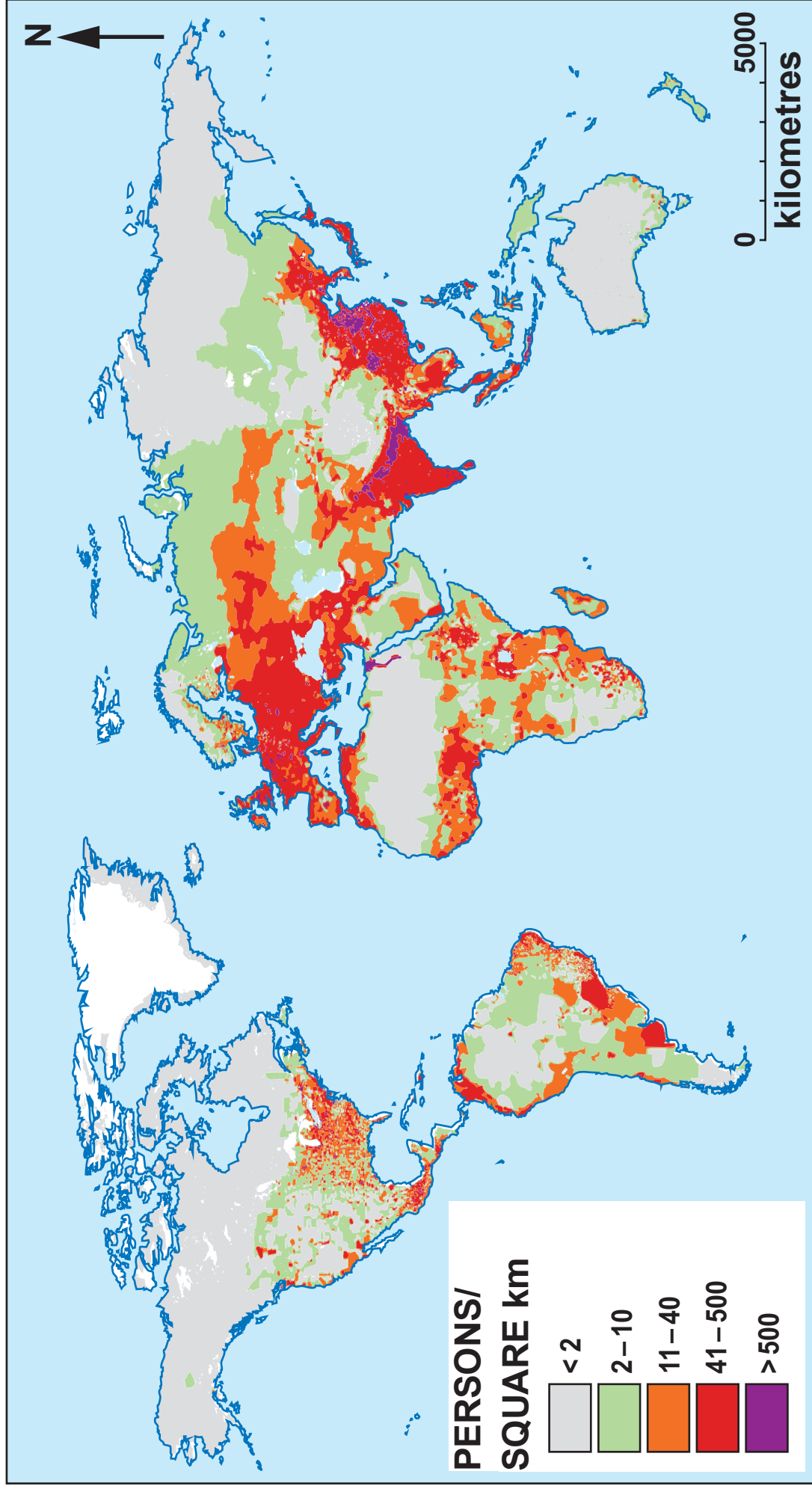
Answer all parts of this question.

- 1. This question is about the influence of the physical environment on the distribution and activities of people.**

Study Source A opposite and answer the question that follows.

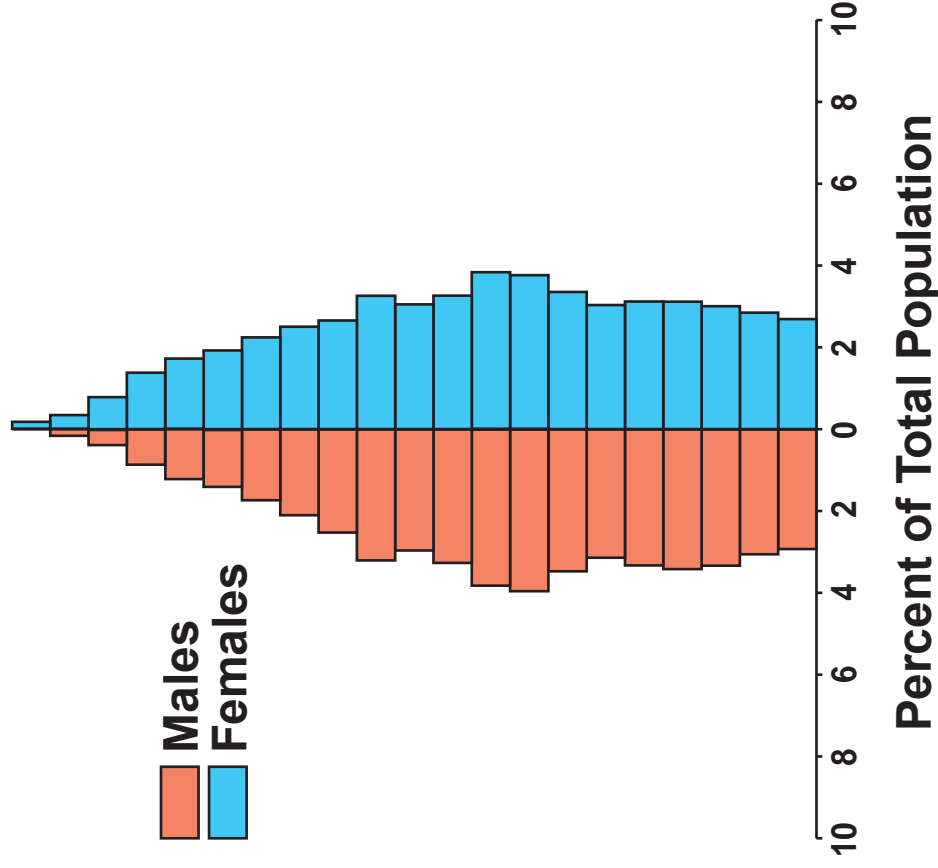
- 1(a) Use Source A to describe the average number of tropical storm events throughout the year. [2]**

Source B – World population density map

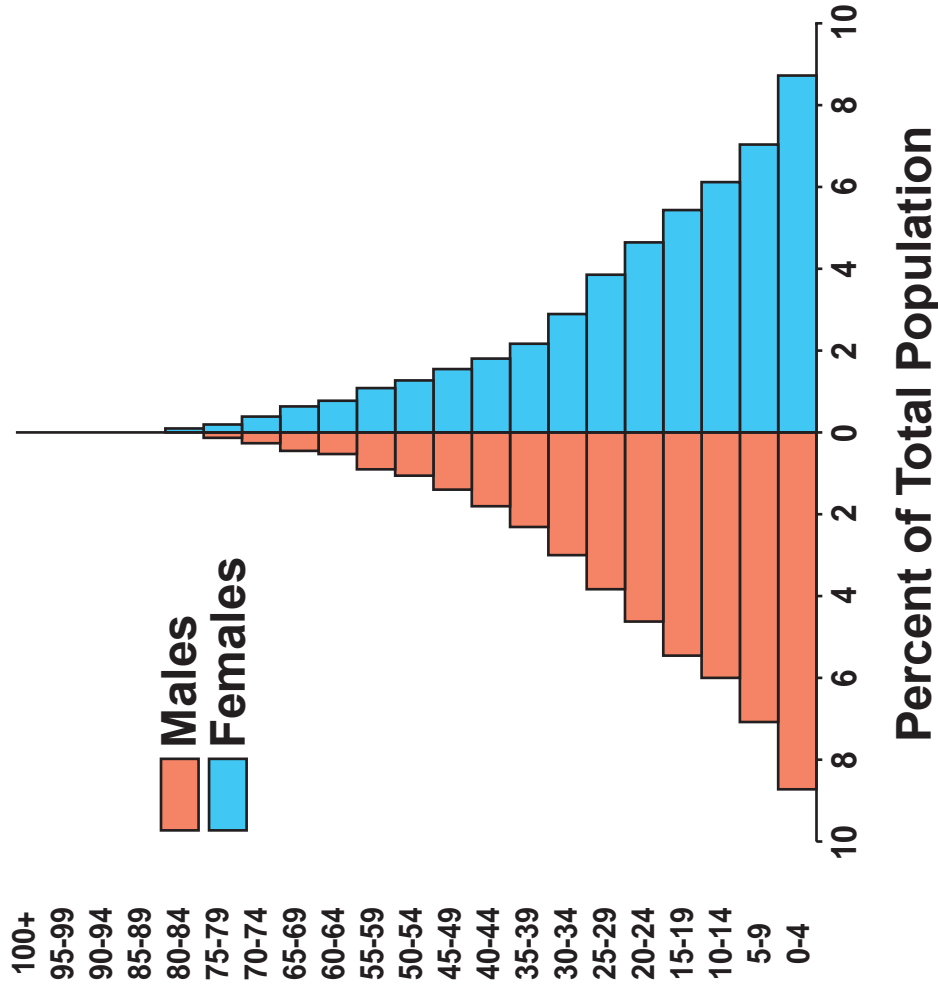


Source C – Population pyramids for the UK and Tanzania

UNITED KINGDOM



TANZANIA



1(f) 'Accurate prediction is the best way to reduce the effects of a hurricane.'

To what extent do you agree with this statement?

[8]

In your answer you may consider:

how prediction can reduce the effects of hurricanes;

other techniques employed to reduce the effects of hurricanes.

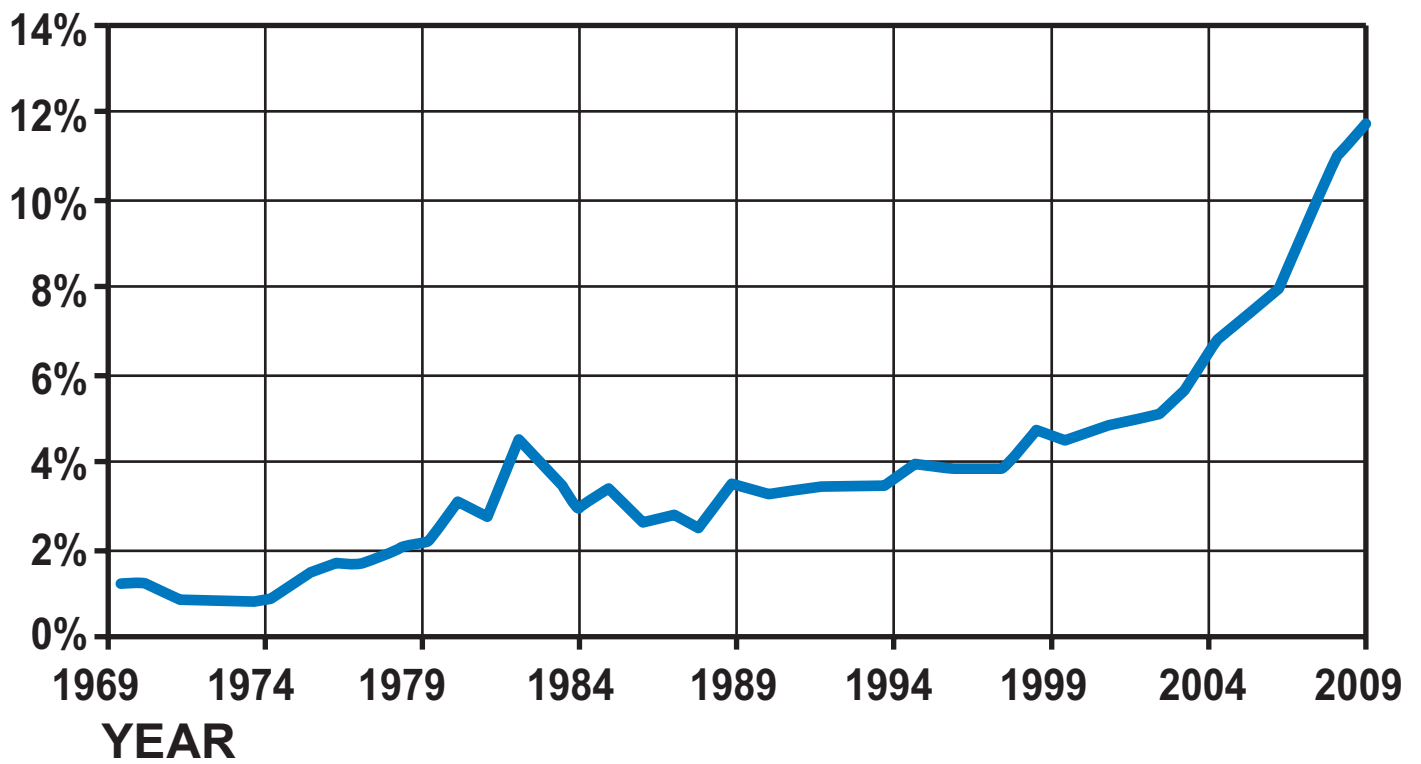
Conclude your answer by saying how far you agree with the statement.

30

END OF SECTION A

Source A – Cyclists as a proportion of road users travelling into London

PERCENTAGE OF ROAD USERS WHO ARE CYCLISTS



Study Source B and answer the question that follows.

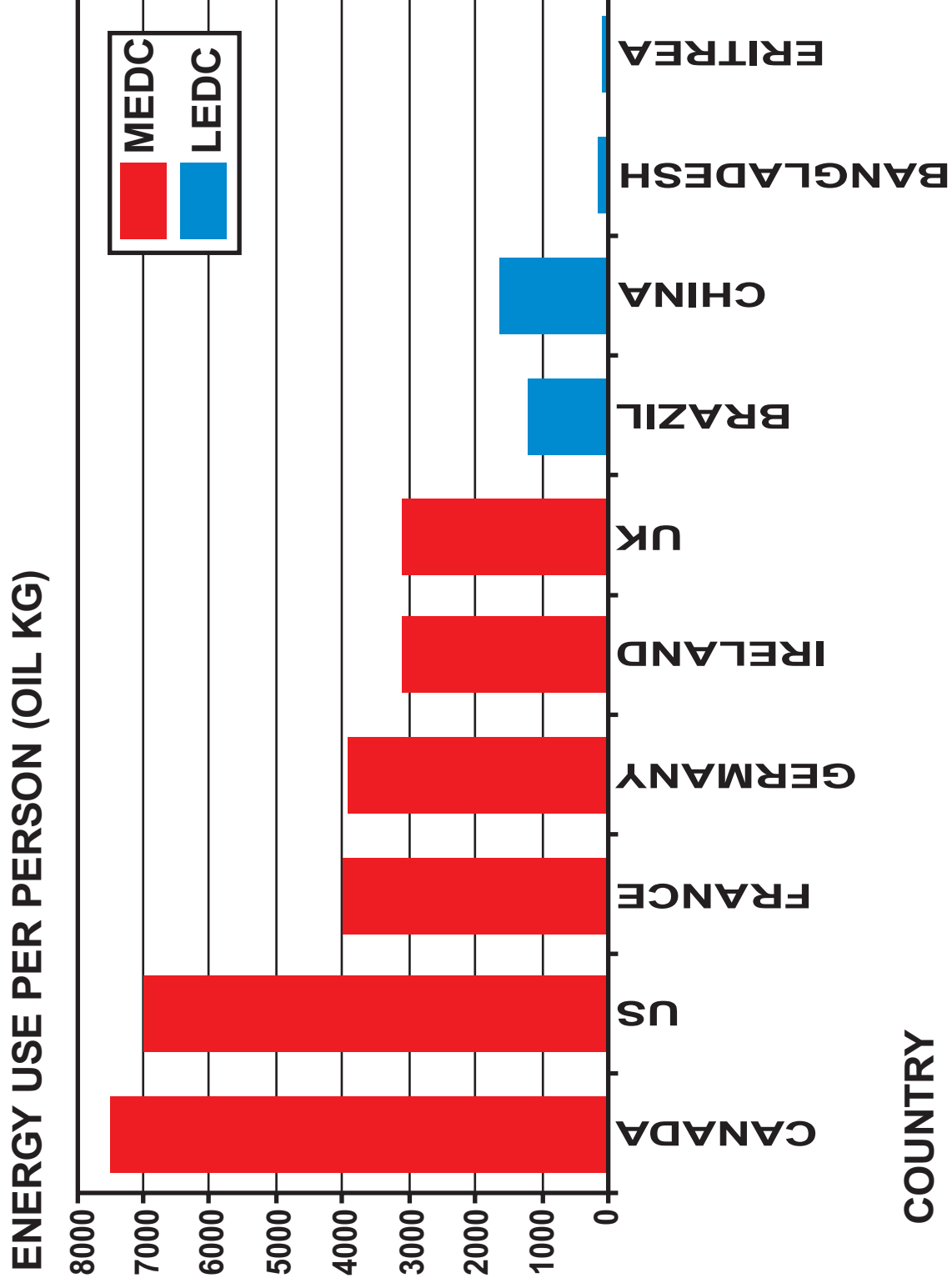
Source B – A photograph showing the urban regeneration of Cardiff Bay



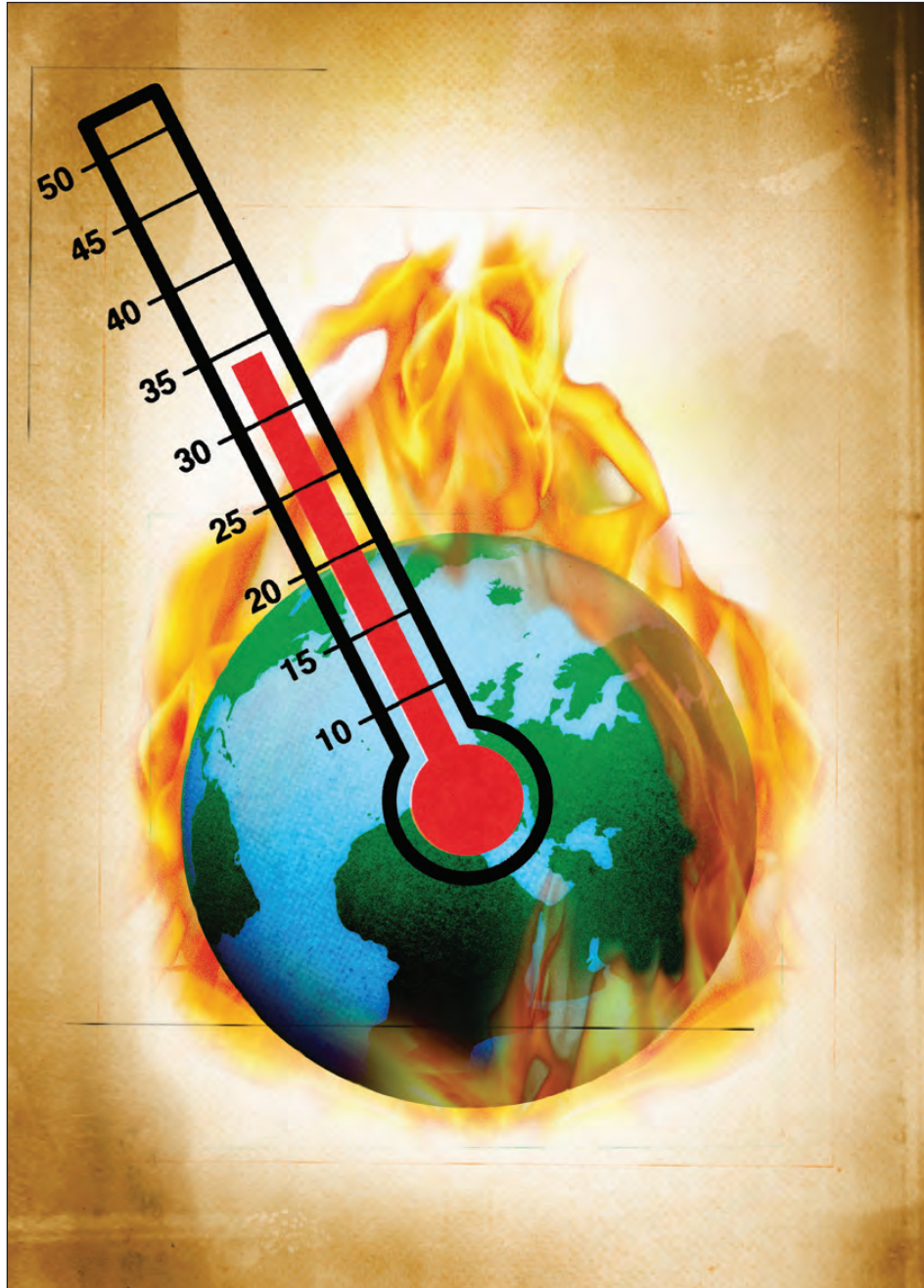
2(b) Describe the successes of such regeneration schemes. [4]

20

Source A – Energy use per person in selected countries (2009)



Source B



20

END OF SECTION B

END OF PAPER