

New AS/A Level Human Biology

H023 and H423 replacing 3886 and 7886

Information for OCR centres transferring to **new specifications for first teaching in September 2008**

This document maps the current A Level Human Biology specification to the new specification for first teaching in September 2008. It includes information on the changes, support available and an outline of the new specification. It is intended to help ease the transition for Heads of Department and Teachers involved in the teaching of Human Biology.

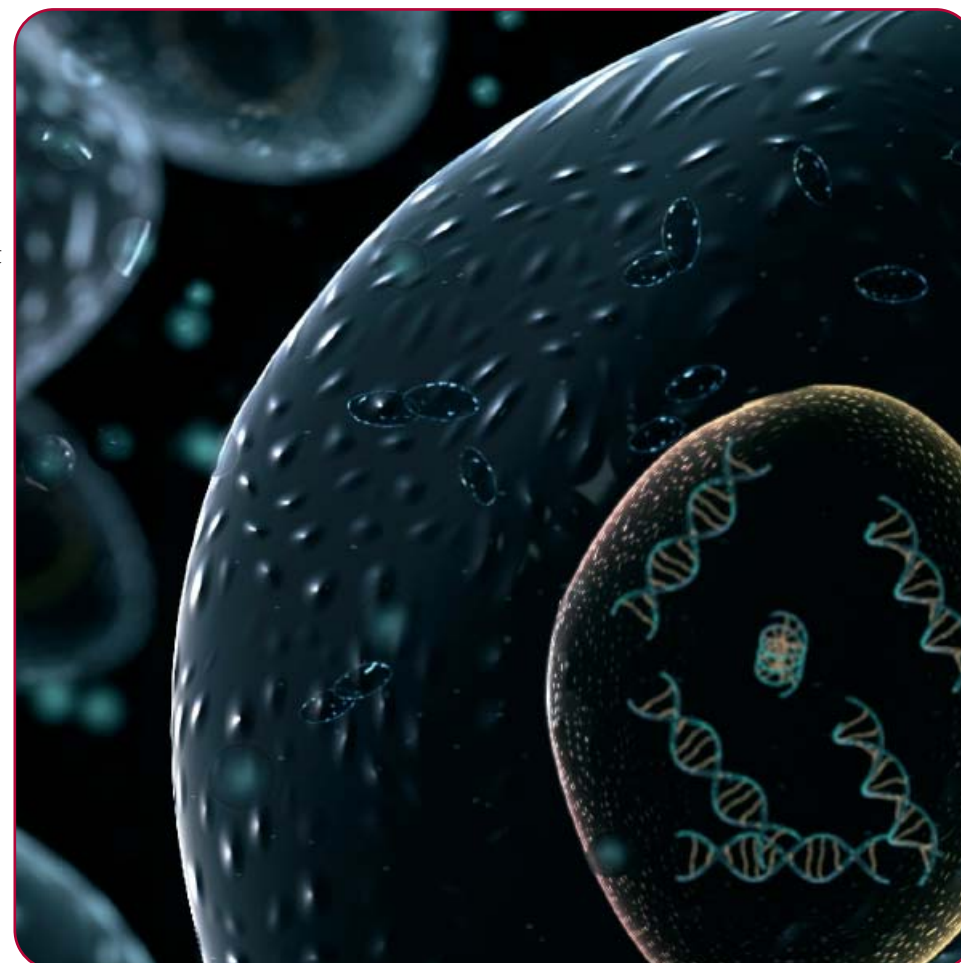
The full specification is available online along with a short questionnaire enabling you to share your comments on the specification and help shape the materials developed to support it. For more information including answers to frequently asked questions visit www.ocr.org.uk/14-19alevels

Current specification – mapping the change page 2

Outline specification for first teaching September 2008 page 3

QCA have stipulated that:

- Number of units required to achieve GCE in Human Biology remains at six
- Coursework is retained as controlled assessment
- Stretch and Challenge style questions to be introduced into A2 assessment



Mapping the changes to the A Level Human Biology specification for first teaching September 2008

H023 and H423 replacing 3886 and 7886



Existing specification							
	Current unit title	Unit code	What remains the same?	What is changing?	Why is it changing?	Guidance	
AS	Blood, Circulation and Gaseous Exchange	2856 Mandatory 30% (AS) 15% (A Level) 1hr written exam		<ul style="list-style-type: none"> Small changes to the balance of the units. Reduction in amount of content. Updated content. 	<ul style="list-style-type: none"> Allows centres maximum opportunity to enter candidates in January. 		
AS	Growth, Development and Disease	2857 Mandatory 30% (AS) 15% (A Level) 1hr written exam		<ul style="list-style-type: none"> Small changes to the balance of the units. Updated content. 			
AS	Case Studies/ Investigative Skills in Human Biology	2858		<ul style="list-style-type: none"> Will be part of new unit code F222. 			
	Case Studies	Mandatory 20% (AS) 10% (A Level) 45min written exam					
	Investigative Skills	Mandatory 20% (AS) 10% (A Level) Coursework	<ul style="list-style-type: none"> Coursework requirement remains but under controlled assessment conditions. 	<ul style="list-style-type: none"> Current scheme is disappearing, to be replaced with new controlled assessment. 	<ul style="list-style-type: none"> QCA requirements and the need to reduce the amount of assessment teachers have. 		
A2	Energy, Control and Reproduction	2866 Mandatory 15% (A Level) 1hr 30min written exam		<ul style="list-style-type: none"> Small changes to the balance of the units. Updated content. 			
A2	Genetics, Homeostasis and Ageing	2867 Mandatory 20% (A Level) 2hr written exam		<ul style="list-style-type: none"> Small changes to the balance of the units. Updated content. 			
A2	Extended Investigation in Human Biology	2868 Mandatory 15% (A Level) Coursework		<ul style="list-style-type: none"> Coursework requirement remains but under controlled assessment conditions. 	<ul style="list-style-type: none"> Current scheme is disappearing, to be replaced with new controlled assessment. Hierarchical assessment scheme will be removed. 	<ul style="list-style-type: none"> QCA requirements and the need to reduce the amount of assessment teachers have. Customer and professional feedback. 	

New A Level Human Biology specification for first teaching September 2008

H023 and H423 replacing 3886 and 7886



For AS GCE all three units are mandatory. For Advanced GCE all six units are mandatory.

	New unit title	New unit code	Benefits to me and my learners	Support
AS	Molecules, Blood and Gas Exchange	F221 Mandatory 30% (AS) 15% (A Level) 1hr written exam	<ul style="list-style-type: none"> Provides continuity for current users. Two modules for easier lesson planning. Unit is shorter to allow centres maximum opportunity to prepare and enter candidates in January. 	<ul style="list-style-type: none"> Comprehensive resources from Heinemann. INSET programme. Schemes of Work for guidance. Sample Assessment Materials.
AS	Growth, Development and Disease	F222 Mandatory 50% (AS) 25% (A Level) 1hr 45min written exam	<ul style="list-style-type: none"> Includes questions based on pre-release case study, downloaded from secure OCR website. 	
AS	Practical Skills in Human Biology	F223 Mandatory 20% (AS) 10% (A Level) Internal assessment	<ul style="list-style-type: none"> Candidates choose one from three, OCR set, practical based tasks from each of three task types: Qualitative, Quantitative and Evaluative. Centres access tasks and mark schemes from OCR secure website. Carried out at a time convenient to the centre, under controlled conditions. Hierarchical assessment no longer required. 	
A2	Energy, Reproduction and Populations	F224 Mandatory 15% (A Level) 1hr written exam	<ul style="list-style-type: none"> Provides continuity for current users. Two modules for easier lesson planning. Unit is shorter to allow centres maximum opportunity to prepare and enter candidates in January. Stretch & Challenge question types included. 	
A2	Genetics, Control and Ageing	F225 Mandatory 25% (A Level) 1hr 45min written exam	<ul style="list-style-type: none"> Stretch & Challenge question types included. 	
A2	Extended Investigation in Human Biology	F226 Mandatory 10% (A Level) Internal assessment	<ul style="list-style-type: none"> Student/centre selected topic. Extended investigation split into three phases based on collection of primary data. Data collection carried out under controlled conditions. Hierarchical assessment no longer required. 	

www.ocr.org.uk
OCR customer contact centre

Vocational qualifications

Telephone 024 76 851509

Facsimile 024 76 421944

Email vocational.qualifications@ocr.org.uk

General qualifications

Telephone 01223 553998

Facsimile 01223 552627

Email general.qualifications@ocr.org.uk

OCR

1 Hills Road, Cambridge CB1 2EU

Telephone 01223 552552

Facsimile 01223 553377

For staff training purposes and as part of our quality assurance programme your call may be recorded or monitored.
© **OCR 2007** Oxford Cambridge and RSA Examinations is a Company Limited by Guarantee. Registered in England.
Registered office 1 Hills Road, Cambridge CB1 2EU. Registered company number 3484466. OCR is an exempt charity.



FS 27093