



**ADVANCED SUBSIDIARY GCE**  
**HOME ECONOMICS**  
**Food, Nutrition and Health**  
 Society and Health

**G001**

Candidates answer on the Question Paper

**OCR Supplied Materials:**  
None

**Other Materials Required:**  
None

**Monday 11 January 2010**  
**Afternoon**

**Duration:** 1 hour 30 minutes



Candidate Forename		Candidate Surname	
--------------------	--	-------------------	--

Centre Number						Candidate Number				
---------------	--	--	--	--	--	------------------	--	--	--	--

**INSTRUCTIONS TO CANDIDATES**

- Write your name clearly in capital letters, your Centre Number and Candidate Number in the boxes above.
- Use black ink. Pencil may be used for graphs and diagrams only.
- Read each question carefully and make sure that you know what you have to do before starting your answer.
- There are two sections in this paper.
  - Section A 25 marks**  
Answer Question 1.
  - Section B 50 marks**  
Answer **two** questions only.
- Do **not** write in the bar codes.
- Write your answer to each question in the space provided.

**INFORMATION FOR CANDIDATES**

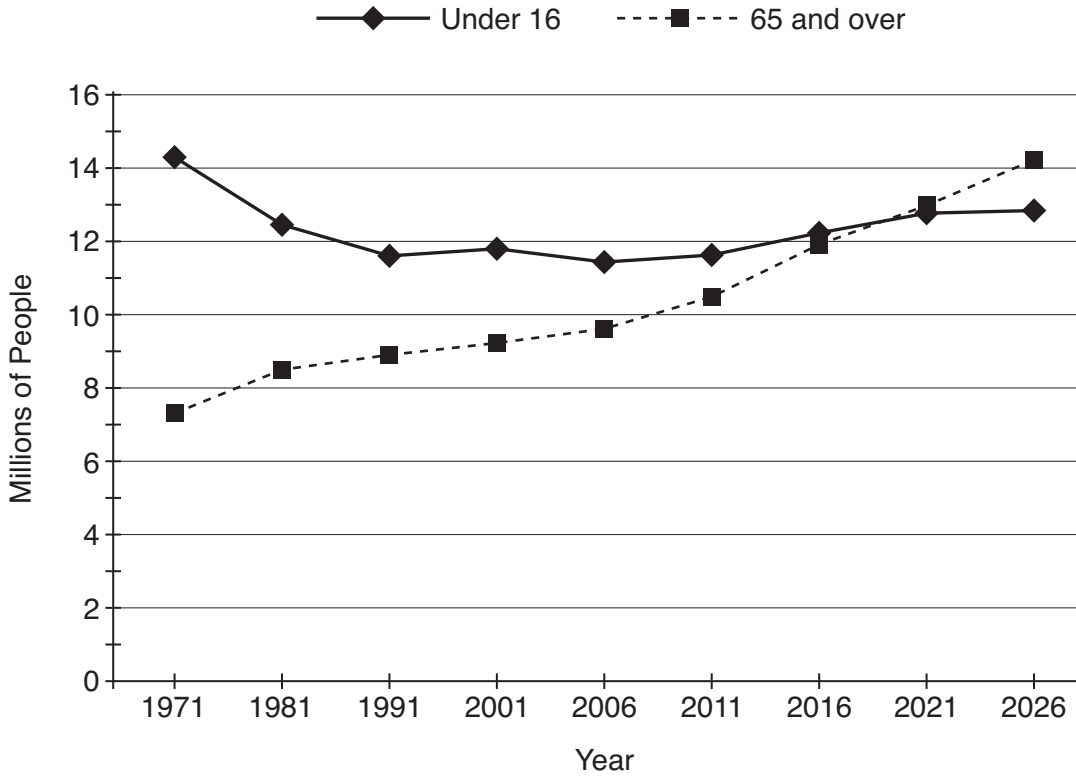
- The number of marks is given in brackets [ ] at the end of each question or part question.
- The total number of marks for this paper is **75**.
- You will be awarded marks for the quality of written communication in your answers to the questions in Section B.
- This document consists of **16** pages. Any blank pages are indicated.

Section A

Answer **all parts** of question 1.

1 The data below shows:

The age structure of the population in the United Kingdom from 1971 to 2006 and the projected trend until 2026.



Source : National Statistics Website : [www.statistics.gov.uk](http://www.statistics.gov.uk)

**Using the data:**

(a) (i) State the population of people under the age of 16 in 2006.

..... million [1]

(ii) State the projected population of people aged 65 and over in 2026.

..... million [1]

(iii) State the first year when the projected number of people aged 65 and over will be greater than the number of people under 16.

..... [1]

(b) Give **two** reasons for the decline in birth rate from 1971 to 2006.

1 .....

.....

2 .....

..... [2]

(c) Give **two** reasons why the number of people aged 65 and over is increasing.

1 .....

.....

2 .....

..... [2]

(d) Identify and explain **two** implications of an increasing elderly population for society.

1 .....

.....

.....

2 .....

.....

..... [4]

(e) Describe **three** ways that a change in dietary habits can influence life expectancy of an individual.

1 .....

.....

.....

2 .....

.....

.....

3 .....

.....

..... [6]



**Section B**

Answer **two** questions only.

The quality of written communication will be assessed in your answers to the questions in Section B.

- 2** Unemployment in the United Kingdom is a concern to both individuals and society.
- (a) Describe the support services available to the unemployed. [10]
- (b) Explain the effects of unemployment on individuals. [15]
- 3** Changes in society have affected the standard of living, households and family groups.
- (a) Explain the factors that affect the standard of living for households and families. [10]
- (b) Describe the changes in household and family group composition, giving reasons for these changes. [15]
- 4** Adequate housing and shelter is a necessary requirement for individuals, families and household groups.
- (a) Discuss the range and type of housing available. [10]
- (b) Describe how housing design can meet the differing needs of individuals, families and household groups. [15]

**Section B Total [50]**

A series of 25 horizontal dotted lines spanning the width of the page, intended for handwriting practice.



A series of 25 horizontal dotted lines spanning the width of the page, providing a template for handwriting practice.















15  
BLANK PAGE

PLEASE DO NOT WRITE ON THIS PAGE

**PLEASE DO NOT WRITE ON THIS PAGE**



**Copyright Information**

OCR is committed to seeking permission to reproduce all third-party content that it uses in its assessment materials. OCR has attempted to identify and contact all copyright holders whose work is used in this paper. To avoid the issue of disclosure of answer-related information to candidates, all copyright acknowledgements are reproduced in the OCR Copyright Acknowledgements Booklet. This is produced for each series of examinations, is given to all schools that receive assessment material and is freely available to download from our public website ([www.ocr.org.uk](http://www.ocr.org.uk)) after the live examination series.

If OCR has unwittingly failed to correctly acknowledge or clear any third-party content in this assessment material, OCR will be happy to correct its mistake at the earliest possible opportunity.

For queries or further information please contact the Copyright Team, First Floor, 9 Hills Road, Cambridge CB2 1GE.

OCR is part of the Cambridge Assessment Group; Cambridge Assessment is the brand name of University of Cambridge Local Examinations Syndicate (UCLES), which is itself a department of the University of Cambridge.