

General Certificate of Education
June 2005
Advanced Subsidiary Examination



HOME ECONOMICS
Unit 1 The Consumer and Society

HEC1

Wednesday 25 May 2005 1.30 pm to 3.00 pm

In addition to this paper you will require:

- an 8-page answer book;

Time allowed: 1 hour 30 minutes

Instructions

- Use a blue or black ink (or ball-point) pen. Pencil should only be used for drawing.
- Write the information required on the front of your answer book. The *Examining Body* for this paper is AQA. The *Paper Reference* is HEC1.
- Answer **both** questions.
- Fasten any supplementary sheets you use to the answer book before handing it to the invigilator at the end of the examination.

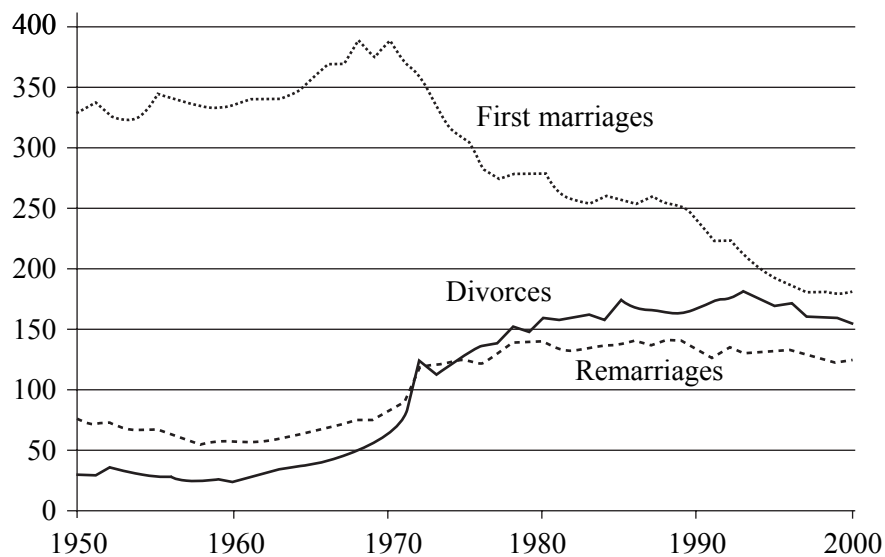
Information

- The number of marks is given in brackets at the end of each question or sub-question.
- You will be assessed on your ability to use an appropriate form and style of writing, to organise relevant information clearly and coherently, and to use specialist vocabulary, where appropriate. The degree of legibility of your handwriting and the level of accuracy, punctuation and grammar will also be taken into account.

Answer **both** questions

Each question carries 30 marks

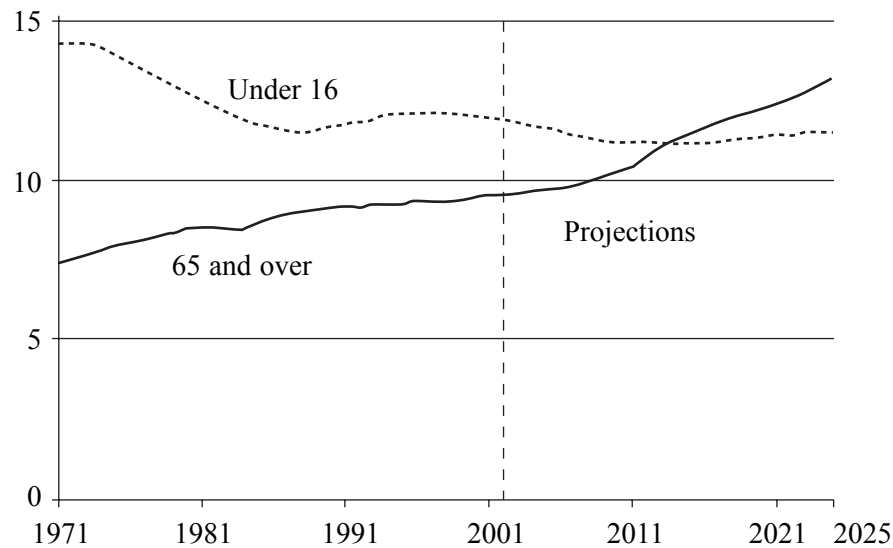
- 1 (a) Discuss what is meant by the term 'social class'. (4 marks)
- (b) Using the graph below, describe and account for the changes in marriage and divorce rates in the UK between 1950 and 2000. (10 marks)



Source: Office for National Statistics, Social Trends 2003

- (c) Discuss the changing role of men and women from 1950 to the present day. (12 marks)
- (d) Describe **two** strategies that exist in local communities to manage resources wisely. (4 marks)

- 2 (a) Define the term 'dependency ratio'. (5 marks)
- (b) Describe and account for the population structure in the UK as shown in the graph below. (10 marks)



Source : Office for National Statistics, Social Trends 2003

- (c) Outline the role of **one** voluntary organisation that campaigns for the care of
- either** the elderly
- or** young children. (3 marks)
- (d) Compare and contrast the private and public provision in the UK today of
- either** education
- or** the National Health Service. (12 marks)

END OF QUESTIONS

THERE ARE NO QUESTIONS PRINTED ON THIS PAGE