

# General Certificate of Education in Health and Social Care



## What type of qualification is this?

The **GCE in Health and Social Care** is one of a new family of vocationally-focused GCEs. It offers a lot of choice which means that you can tailor it to meet your skills, interests and ambitions. It is ideal if you do not want to take a purely academic-style GCE. You get the best of both worlds by gaining a respected GCE qualification that encompasses a 'real-world' vocational approach.

## What should a candidate have achieved before taking on a GCE in Health and Social Care?

Prior study for **GCSE in Health and Social Care** may be of benefit to you, but is not essential.

## Preparation for further study

The **GCE in Health and Social Care** provides a broad introduction to the subject and prepares you for study in further or higher education. The qualification attracts UCAS points in the same way as ordinary GCEs.

## Additional benefits of GCE in Health and Social Care

You will acquire the necessary skills, knowledge and understanding to create, develop and present high-quality work.

## Qualifications available

The **GCE in Health and Social Care** is available as either a single or double award AS GCE or a single or double award full GCE.



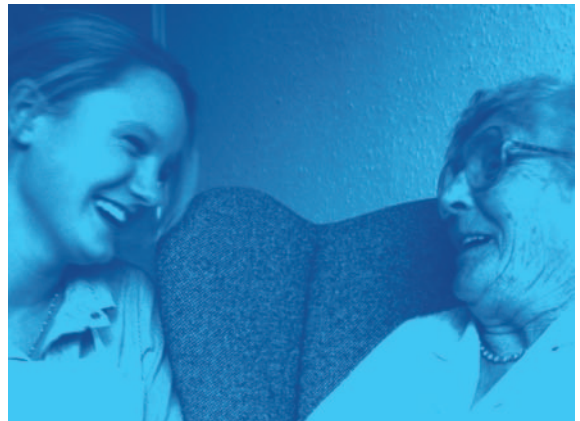
# GCE in Health and Social Care

## Units available

The following units are available for study, some are mandatory and some are optional.

### Level Unit Title

AS	Promoting quality care
AS	Communication in care settings
AS	Promoting good health
AS	Health and safety in care settings
AS	Caring for people with additional needs
AS	Working in early years care and education
AS	Health as a lifestyle choice
AS	Complementary therapies
AS	Caring for older people
A2	Care practice and provision
A2	Understanding human behaviour
A2	Anatomy and physiology in practice
A2	Child development
A2	Mental health issues
A2	Social trends
A2	Research methods in health and social care



## To find out more

Contact your school for more information.

Your nearest centre is: