

OXFORD CAMBRIDGE AND RSA EXAMINATIONS

Advanced Subsidiary GCE

HEALTH AND SOCIAL CARE

F913

UNIT 4: Health and Safety in Care Settings

Friday

9 JUNE 2006

Morning

1 hour 30 minutes

Candidates answer on the question paper.
Additional answer paper may be required.

Candidate Name	Centre Number	Candidate Number												
	<table border="1" style="display: inline-table; border-collapse: collapse;"> <tr> <td style="width: 15px; height: 15px;"></td> <td style="width: 15px; height: 15px;"></td> <td style="width: 15px; height: 15px;"></td> <td style="width: 15px; height: 15px;"></td> <td style="width: 15px; height: 15px;"></td> <td style="width: 15px; height: 15px;"></td> </tr> </table>							<table border="1" style="display: inline-table; border-collapse: collapse;"> <tr> <td style="width: 15px; height: 15px;"></td> <td style="width: 15px; height: 15px;"></td> <td style="width: 15px; height: 15px;"></td> <td style="width: 15px; height: 15px;"></td> <td style="width: 15px; height: 15px;"></td> <td style="width: 15px; height: 15px;"></td> </tr> </table>						

TIME 1 hour 30 minutes

INSTRUCTIONS TO CANDIDATES

- Write your name in the space above.
- Write your Centre number and Candidate number in the boxes above.
- Answer **all** the questions.
- Write your answers, in blue or black ink, in the spaces on the question paper.
- Read each question carefully and make sure you know what you have to do before starting your answer.

INFORMATION FOR CANDIDATES

- The number of marks is given in brackets [] at the end of each question or part question.
- The total number of marks for this paper is 100.
- *You will be awarded marks for the quality of written communication where an answer requires a piece of extended writing.*

FOR EXAMINER'S USE	
1	
2	
3	
4	
5	
6	
TOTAL	

This question paper consists of 14 printed pages and 2 blank pages.

1 (a) (i) Name the legislation that regulates the way chemicals are controlled in care settings.

.....[1]

(ii) Identify **two** different substances that would be covered by this legislation. Describe how each substance should be stored.

1.....
.....
.....

2.....
.....
.....[4]

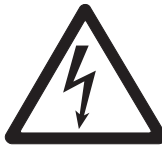
(b) (i) Name the legislation that controls the use of safety signs.

.....[1]

(ii)



A



B



C

Identify the **three** safety signs above. Explain how each helps to reduce risk.

A.....
.....
.....
.....
.....

B

.....

.....

.....

.....

.....

C

.....

.....

.....

.....

.....[9]

[Total: 15]

2 (a) What is meant by the term 'cross-infection'?

.....
.....[1]

(b) Give **three** standard precautions that should be carried out to avoid cross-infection. Describe how each standard precaution helps to avoid cross-infection.

1
.....
.....

2
.....
.....

3
.....
.....[6]

(c) For each item of protective clothing given below, explain how the health of service users would be protected.

Gloves
.....
.....
.....

Masks
.....
.....
.....

Overshoes
.....
.....
.....[6]

(d) Give **two** ways care workers could maintain their personal safety when dealing with surgical instruments.

1
.....
2
.....[2]

[Total: 15]

3 (a) Give **two** functions of the Health and Safety Executive.

1

.....

2

.....[2]

(b) Name **one** piece of legislation which regulates the safety of employees in care settings.

.....[1]

(c) Give **three** pieces of information that must be made available to employees about first aid and accidents.

1

.....

2

.....

3

.....[3]

(d) The Health and Safety leaflet should be available to employees in the workplace.

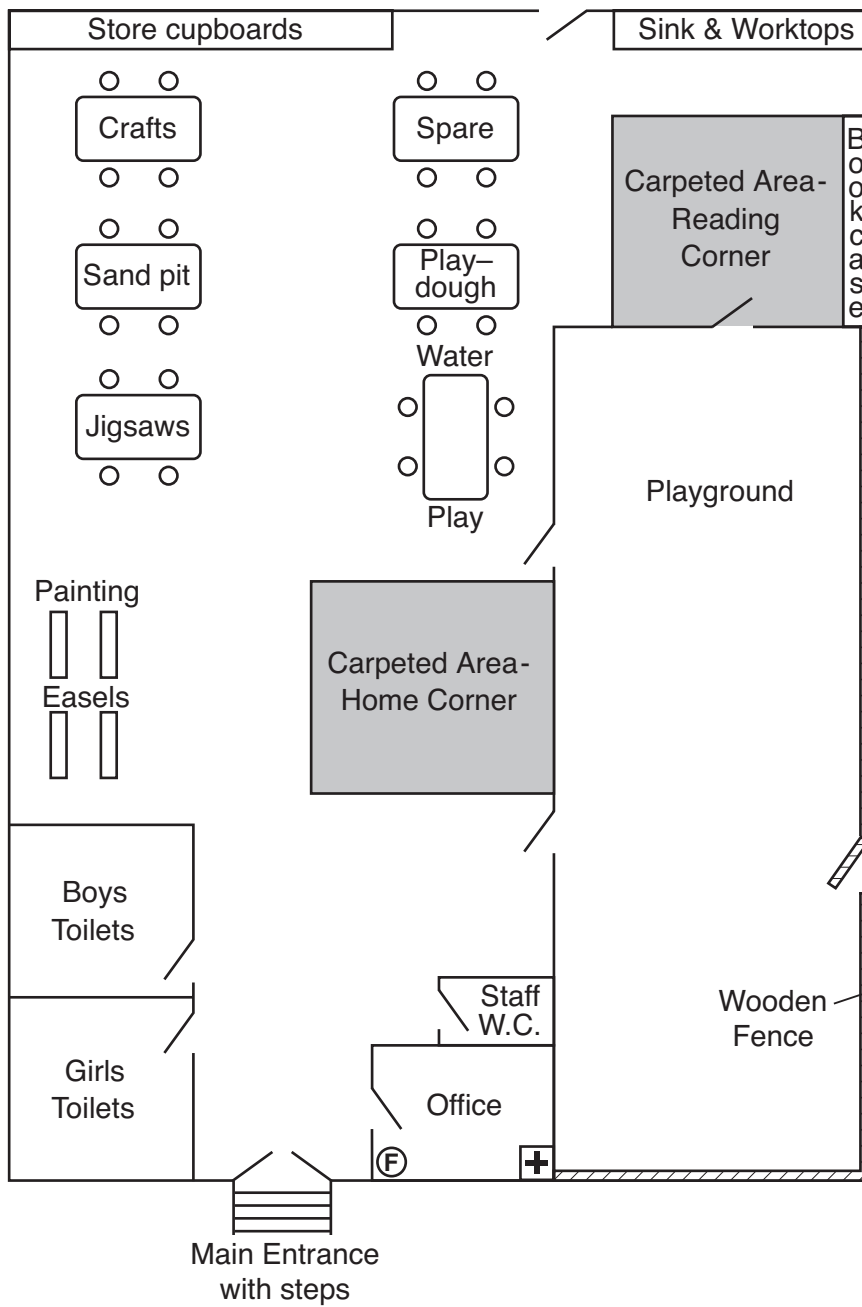
Identify **two** pieces of information that should be included in the leaflet.

1

2

[2]

5 Westwood Nursery – ground floor plan.



— indicates a doorway + First Aid Box (F) Fire Extinguisher

Using the information provided in the plan and your own knowledge, carry out a risk assessment for Westwood Nursery.

.....

.....

.....

.....

.....

6 (a) Identify **three** procedures or pieces of equipment that could reduce the risk of fire. Describe how each would contribute to fire safety.

1

.....

.....

.....

2

.....

.....

.....

3

.....

.....

.....[6]

(b) Identify **three** different pieces of equipment that could be used to put out a fire. Describe the situation in which each should be used.

1

.....

.....

.....

2

.....

.....

.....

3

.....

.....

.....[6]

Permission to reproduce items where third-party owned material protected by copyright is included has been sought and cleared where possible. Every reasonable effort has been made by the publisher (OCR) to trace copyright holders, but if any items requiring clearance have unwittingly been included, the publisher will be pleased to make amends at the earliest possible opportunity.

OCR is part of the Cambridge Assessment Group. Cambridge Assessment is the brand name of University of Cambridge Local Examinations Syndicate (UCLES), which is itself a department of the University of Cambridge.