

OCR ADVANCED SUBSIDIARY GCE IN GERMAN (3862)

OCR ADVANCED GCE IN GERMAN (7862)

Specimen Question Papers and Mark Schemes

These specimen assessment materials are designed to accompany the OCR Advanced Subsidiary GCE and Advanced GCE specifications in German for teaching from September 2000.

Centres are permitted to copy material from this booklet for their own internal use.

The GCE awarding bodies have prepared new specifications to incorporate the range of features required by new GCE and subject criteria. The specimen assessment material accompanying the new specifications is provided to give centres a reasonable idea of the general shape and character of the planned question papers in advance of the first operational exams.

This Specimen Assessment booklet contains revised Specimen Assessment Material for Unit 2661, Papers A and B.

Please refer to the separate Specimen Assessment Material booklet for Specimen Assessment Material for Unit 2662 to Unit 2666 which is unchanged.

CONTENTS

Advanced Subsidiary GCE

Unit 2661A: Speaking Question Paper	Page 3
Unit 2661B: Speaking Question Paper	Page 7

Oxford Cambridge and RSA Examinations

Advanced Subsidiary GCE

**GERMAN
SPEAKING**

2661A

Specimen Paper

Additional materials:
None

TIME 15 minutes

INSTRUCTIONS TO CANDIDATES

There are two parts to this paper:

.

Section 1

Role play (5 minutes; 15 marks)

Section 2

Presentation and discussion of topic (10 minutes; 45 marks)

This sheet contains the Role-play for Section 1. You will have 20 minutes in which to prepare your role-play. You may make notes on this sheet and you may take your notes with you into the examination.

You may NOT use a dictionary for the preparation of this task.

For the Presentation you may take in a cue card written in the foreign language and containing up to 5 headings to remind you of the main points you wish to make. You will have provided the Examiner with a set of up to 5 headings written in the foreign language outlining your areas of interest within the topic.

Role Play A: Candidate's Sheet

Note to the candidate:

You should begin the task by asking the two questions. The task can then be completed in the order you prefer. You should base your replies on the English text, but sometimes you will need to use your imagination.

Situation

Sie arbeiten für das Rathaus Tenterden in Kent für die Abteilung "Städtepartnerschaften". Ein Besuch von einer Gruppe Erwachsener aus der Stadt Rellinghausen, der deutschen Partnerstadt Tenterdens, wird geplant. Man hat Sie nach Deutschland geschickt, um einige Ausflüge zu planen.

Die Aufgabe

Während Ihres Deutschlandbesuchs sprechen Sie mit dem/der Organisator/in des Aufenthaltes (dem/der Prüfer/in) und Sie besprechen mögliche Ausflugsziele.

Sie müssen Folgendes herausfinden:

1. die Zahl der Erwachsenen, die nach England kommen wollen
2. welche Art von Ausflug gewünscht wäre

Sie haben eine Broschüre über das Schloss Woburn Abbey. Sie sind der Meinung, dass ein Besuch nach Woburn für die deutschen Gäste ideal wäre. Der/die Organisator/in stellt Ihnen einige Fragen. Sie erklären ihm/ihr:

- wo sich das Schloss Woburn Abbey befindet
- was es da zu sehen und tun gibt
- die Öffnungszeiten
- Essmöglichkeiten
- Gruppenermäßigungen

Im Laufe des Gesprächs diskutieren Sie auch:

- Warum Ihrer Meinung nach solche Ausflugsziele so beliebt sind.

Es liegt an Ihnen, den/die Organisator/in zu überreden, dass ein Besuch zum Schloss Woburn Abbey interessant wäre.

Hilfsvokabeln:	marquess:	der Marquis
	in the vaults	im Kellergewölbe
	antiques	die Antiquitäten

Role Play A: Examiner's Sheet

Note to the examiner:

Below is a guide to the conduct of your part of the role-play exercise. You should start the task as indicated, but the way in which the task develops from that point will of course vary from candidate to candidate, and you should not feel constrained to follow the order shown below if this is not appropriate. The items printed in bold, which relate to the completion of the task, **MUST** be explored for each candidate; the other suggestions may or may not occur depending on the way in which the task develops.

Situation

As on the Candidate's sheet. You are the person in charge of the visit of Rellinghausen adults to England. You are interested in options for excursions and have invited the candidate to your office for a discussion.

Task

You begin the task as follows:

“Sie arbeiten für das Rathaus Tenterden in Kent für die Abteilung “Städtepartnerschaften”. Ein Besuch von einer Gruppe Erwachsener aus der Stadt Rellinghausen, der deutschen Partnerstadt Tenterdens, wird geplant. Sie sind nach Deutschland gekommen, um mir zu helfen, einige Ausflüge zu planen. Ich bin der/die Organisator/in des Aufenthaltes. Ich glaube, Sie haben ein paar Fragen an mich.”

In response to the candidate's questions you reply:

1. there will be 30 adults in the group
2. they would like to see a stately home, further afield than Kent, as they have seen many of the sights there.

The candidate will suggest a visit to Woburn Abbey. During the discussion, you comment and ask questions as follows:

- **where exactly is Woburn Abbey?**
- who lives there?
- **what is there to see and do?**
- **what are the opening times?**
- **what meals are served there?** Are there various possibilities?
- can you buy souvenirs of any sort?
- **are there reductions for groups?**
- how does he/she suggest organising the day out?

During the discussion you also discuss

- **why the candidate thinks such excursions are so popular.**

In the end you agree that Woburn Abbey sounds a good idea for an excursion and decide to include it in your programme.

WOBURN ABBEY

Home of the Dukes of Bedford

Visitors will experience living history at Woburn Abbey. The Russell family has lived here for almost 450 years and it is still the family home of the Marquess of Tavistock.

There are over 250 paintings to enjoy on the three floor tour of the house. In the vaults, there is a magnificent display of porcelain.

The Antiques Centre

A wide range of antiques is on sale in 51 shops.

Woburn Abbey Catering

The Flying Duchess Pavilion serves simple lunches and teas and a selection of snacks and drinks.

Group Visits

There are discounted rates for parties of 15 or more persons. Guided tours can be arranged during the season and out of hours.

Opening Times

Every Day from

21 March to 26 September 11.00-16.00

Sundays and Bank Holidays 11.00-17.00

WOBURN ABBEY

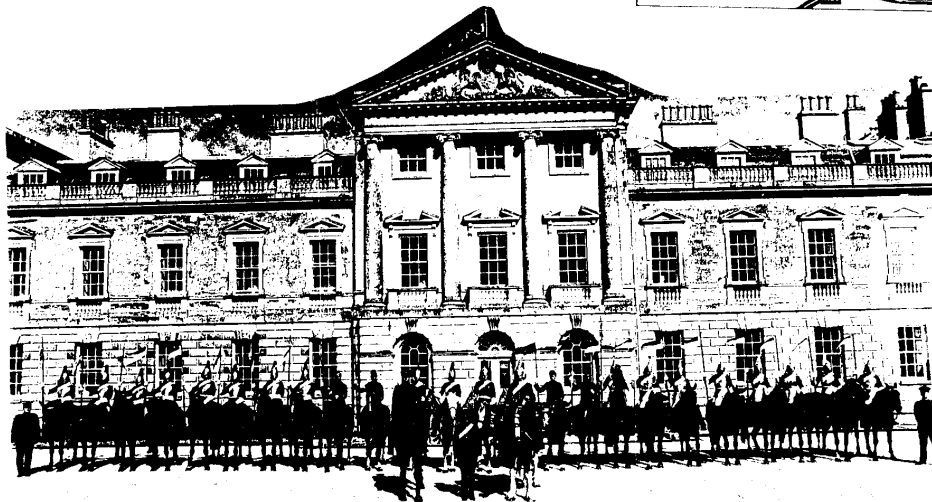
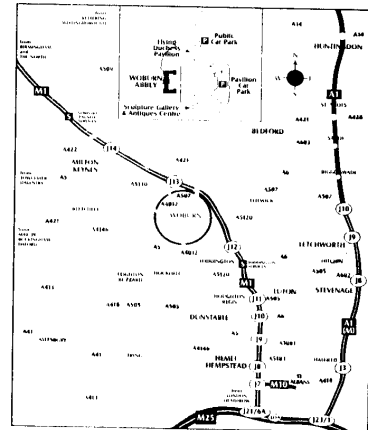
Woburn, Bedfordshire MK43 0TP

telephone: 01525 290666 fax: 01525 290271

How to get to Woburn

Woburn Abbey is approximately one hour's drive from London.

Take exit 13 off the M1 motorway
Or leave the A5 at Hockliffe for
the A4012.



Oxford Cambridge and RSA Examinations

Advanced Subsidiary GCE

**GERMAN
SPEAKING**

2661B

Specimen Paper

Additional materials:
None

TIME 15 minutes

INSTRUCTIONS TO CANDIDATES

There are two parts to this paper:

Section 1

Role play (5 minutes; 15 marks)

Section 2

Presentation and discussion of topic (10 minutes; 45 marks)

This sheet contains the Role-play for Section 1. You will have 20 minutes in which to prepare your role-play. You may make notes on this sheet and you may take your notes with you into the examination.

You may NOT use a dictionary for the preparation of this task.

For the Presentation you may take in a cue card written in the foreign language and containing up to 5 headings to remind you of the main points you wish to make. You will have provided the Examiner with a set of up to 5 headings written in the foreign language outlining your areas of interest within the topic.

Role Play B: Candidate's Sheet

Note to the candidate

You should begin the task by asking the two questions. The task can then be completed in the order you prefer. You should base your replies on the English text, but sometimes you will need to use your imagination.

Situation

Eine deutsche Familie wohnt zur Zeit bei Ihnen. Während des Besuchs wollen Sie einige Ausflüge organisieren.

Die Aufgabe

Sie haben schon einige historische Denkmäler besucht und Sie wollen jetzt etwas Anderes finden. Sie besprechen die Situation mit dem/der deutschen Vater/Mutter (dem/der Prüfer/in).

Sie müssen Folgendes herausfinden:

1. welche Ausflüge er/sie möchte
2. was er/sie während des Tages auch noch machen möchte

Sie haben eine Broschüre über die Glasbläserei und Besucherzentrum Caithness. Sie sind der Meinung, dass ein Besuch zu dieser Glasbläserei der deutschen Familie sehr gefallen würde. Der Vater/die Mutter stellt Ihnen ein paar Fragen. Sie erklären ihm/ihr:

- wo sich die Glasbläserei befindet
- was man im Geschäft kaufen kann
- was man in der Glasbläserei sehen und tun kann
- die Öffnungszeiten

Während des Gesprächs diskutieren Sie auch:

- wie man den Tag organisieren sollte (Besuch/Essen/Aktivitäten usw.) und warum Ihrer Meinung nach ein Besuch zur Glasbläserei interessant wäre

Hilfsvokabeln:	paperweights	Briefbeschwerer
	jewellery	Schmuck

Role Play B: Examiner's Sheet

Note to the examiner:

Below is a guide to the conduct of your part of the role-play exercise. You should start the task as indicated, but the way in which the task develops from that point will of course vary from candidate to candidate, and you should not feel constrained to follow the order shown below if this is not appropriate. The items printed in bold, which relate to the completion of the task, **MUST** be explored for each candidate; the other suggestions may or may not occur depending on the way in which the task develops.

Situation

As on the Candidate's sheet. You are the father/mother of the German family. You are staying with the candidate's family and have already been on some outings. You are wondering where to go for the next outing.

Task

You begin the task as follows:

“Zur Zeit haben Sie eine deutsche Familie zu Gast. Ich bin der deutsche Vater / die deutsche Mutter. Wir diskutieren Ausflugsmöglichkeiten. Ich glaube, Sie haben ein paar Fragen an mich.”

In response to the candidate's questions you reply:

1. you would like to do something a bit different as you have visited several historic places
2. you would like to have a meal and buy some souvenirs

The candidate will suggest going to the Caithness Crystal Visitor Centre. You have never visited a place like that before. During the discussion you comment and ask questions as follows:

- **where exactly is the Caithness Centre?**
- **what can one buy in the shop?**
- **what can one see and do at the Centre?**
- **when are its opening times?**
- are there facilities for meals?
- is there a car park?

During the conversation, you also discuss

- **how the candidate suggests organising the day and why it would be a good place to visit.**

In the end you agree that a visit to the Caithness Centre would be something different and you agree to include it in a day's outing.

King's Lynn

VISITOR CENTRE

The Caithness Crystal Visitor Centre is located on the edge of the beautiful market town of King's Lynn. Within easy reach of the Norfolk Coast, Norwich, Peterborough, Cambridge and Lincoln, there is much to see and do. So why not start your visit to the area with a visit to the Caithness Crystal Visitor Centre.

- Large, well-stocked Factory Shop with many bargains in glass, crystal, paperweights, jewellery and ceramics.
- Relax in our comfortable licensed restaurant for breakfast, morning coffee, lunches, afternoon teas and all day snacks and meals.
- Ample free coach and car parking.

The GLASSMAKERS

Today you can marvel at close quarters the centuries-old craft of glassmaking.

Opening Hours

Factory shop and restaurant
Monday to Saturday 0900-1700 All Year

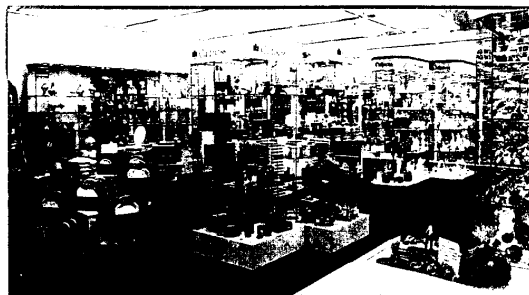
Glassmaking
Monday to Friday April to December 0915-1600

Telephone: 01553 765111/765123 for further information.



Watch the craftsmen at close quarters

Marvel at the skills of the glassmakers



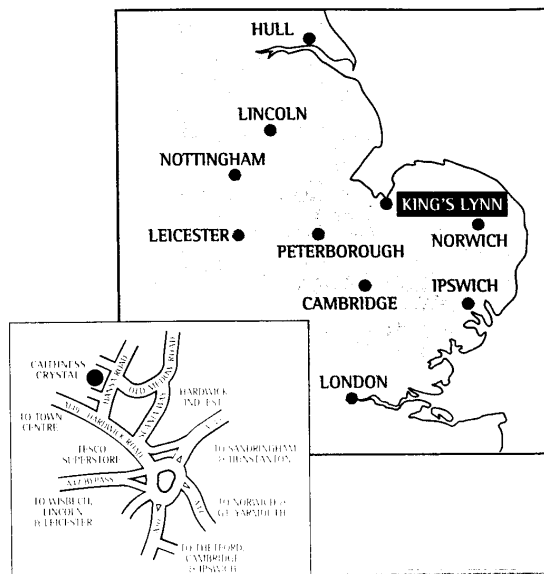
Well stocked Factory Shop

A unique factory shopping experience

Extensive selection of giftware and stemware in glass and crystal with a Superb choice of Paperweights. Plus -

- Handmade glass animals
Selection of great gift ideas to choose from.

How to find us and when we are open



Easy to find. South side of town. Watch for 'Brown Signs'



Assessment: Role-play (15 marks)

For the Role Play use Grids 1A and 1B (p. 59 of the specification) to assess the candidate's performance in completing the task [max. 10].

For Quality of Language use Grid 1C (p. 60 of the specification) [max 5].

Assessment: Presentation and Discussion (45 marks)

For the Presentation use Grid 1D (p. 61) to assess the candidate's factual knowledge of the topic [max. 20].

For the Discussion use Grid 1E (p. 62) to assess Spontaneity and Fluency of Response [max. 15], Grid 1F (p.63) to assess Pronunciation and Intonation [max. 5] and Grid 1C (p. 63) to assess Quality of Language [max. 5].

